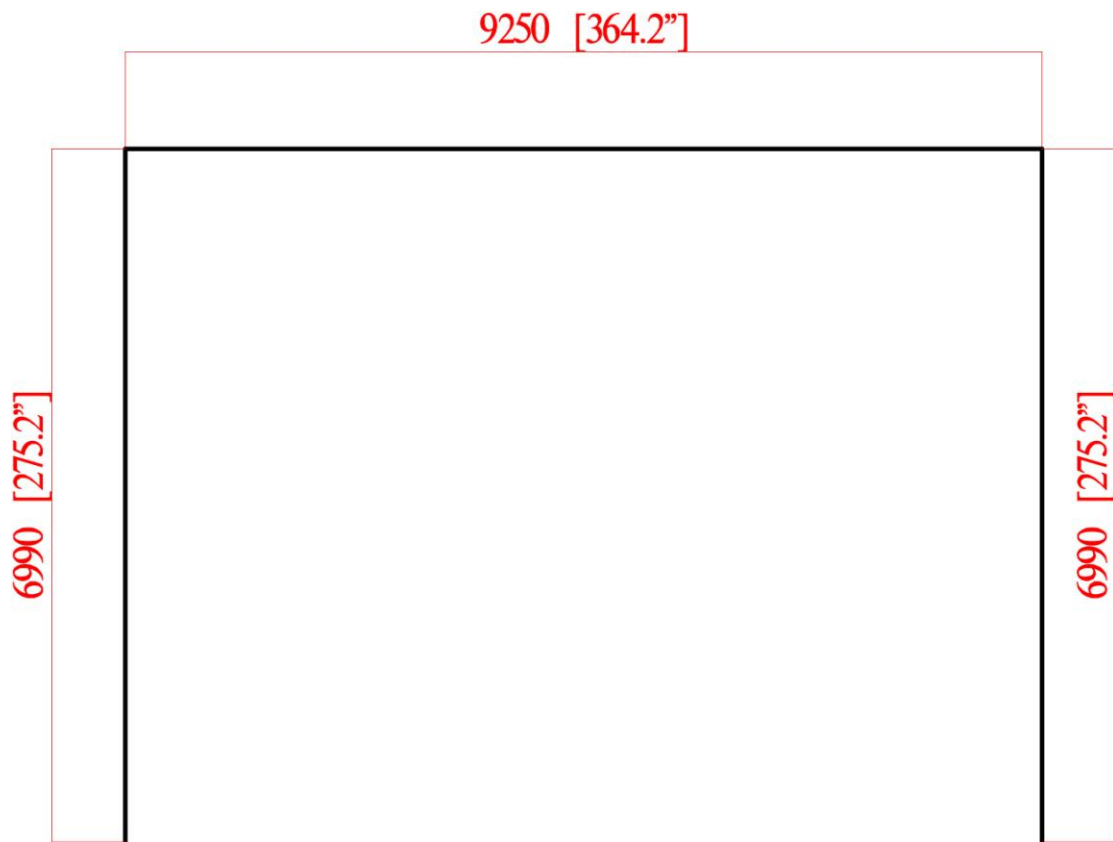
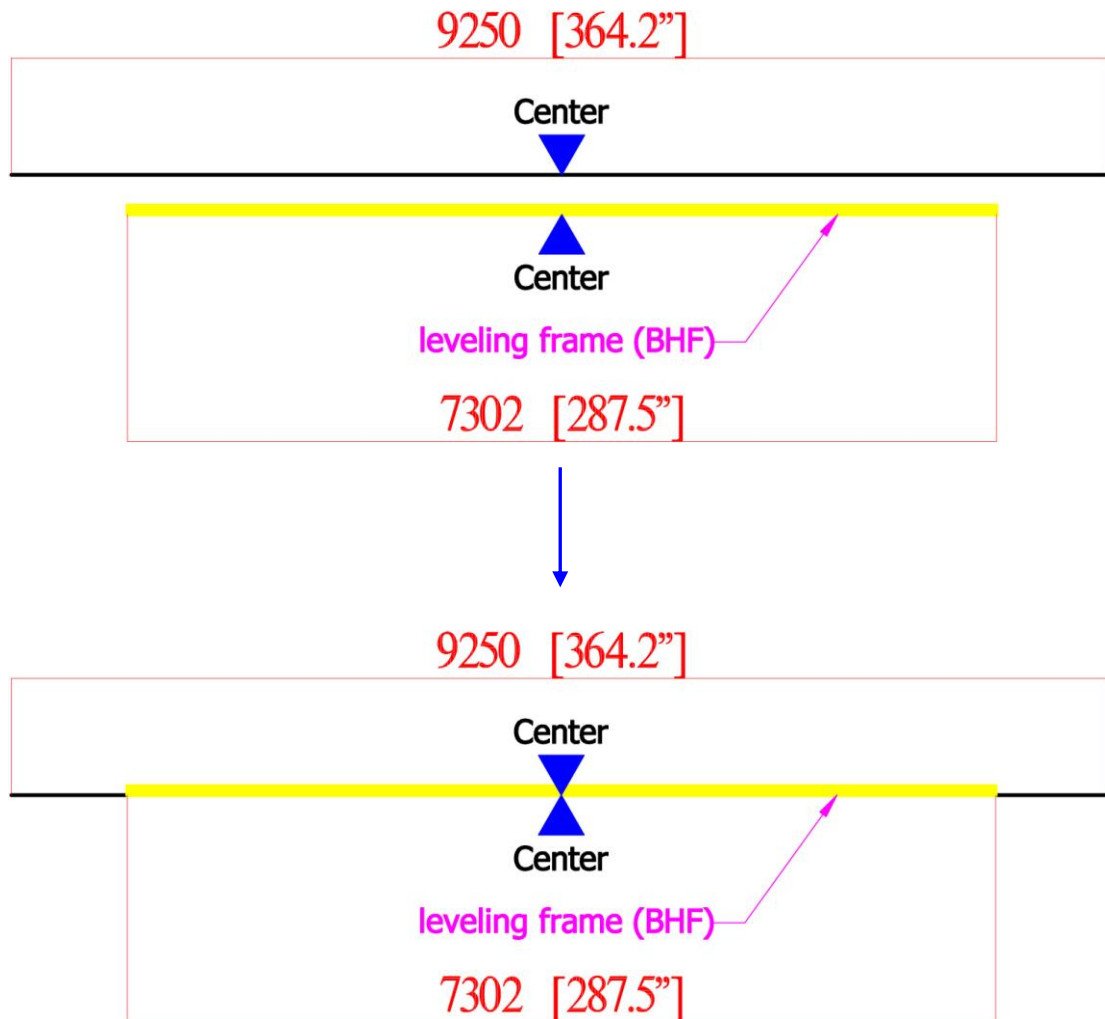


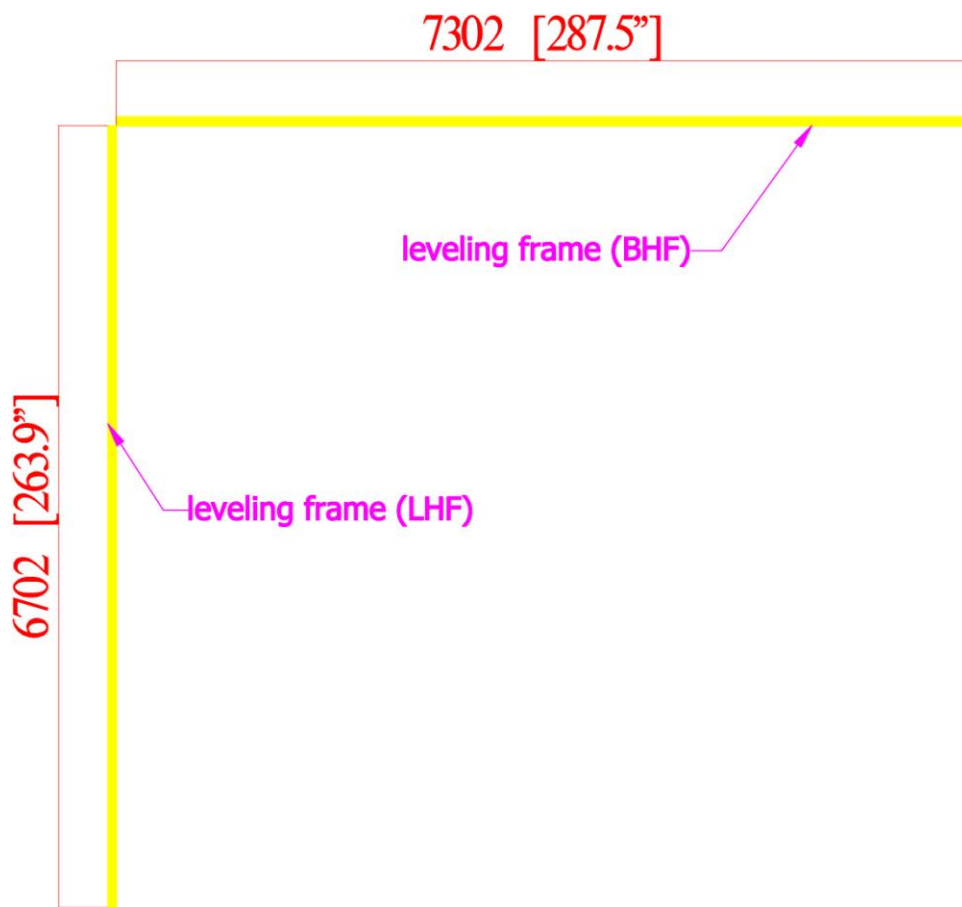
- Vacate space and mark up for built-up installation: booth back: 9250mm (364.2") and booth both sides: 6990mm (275.2").



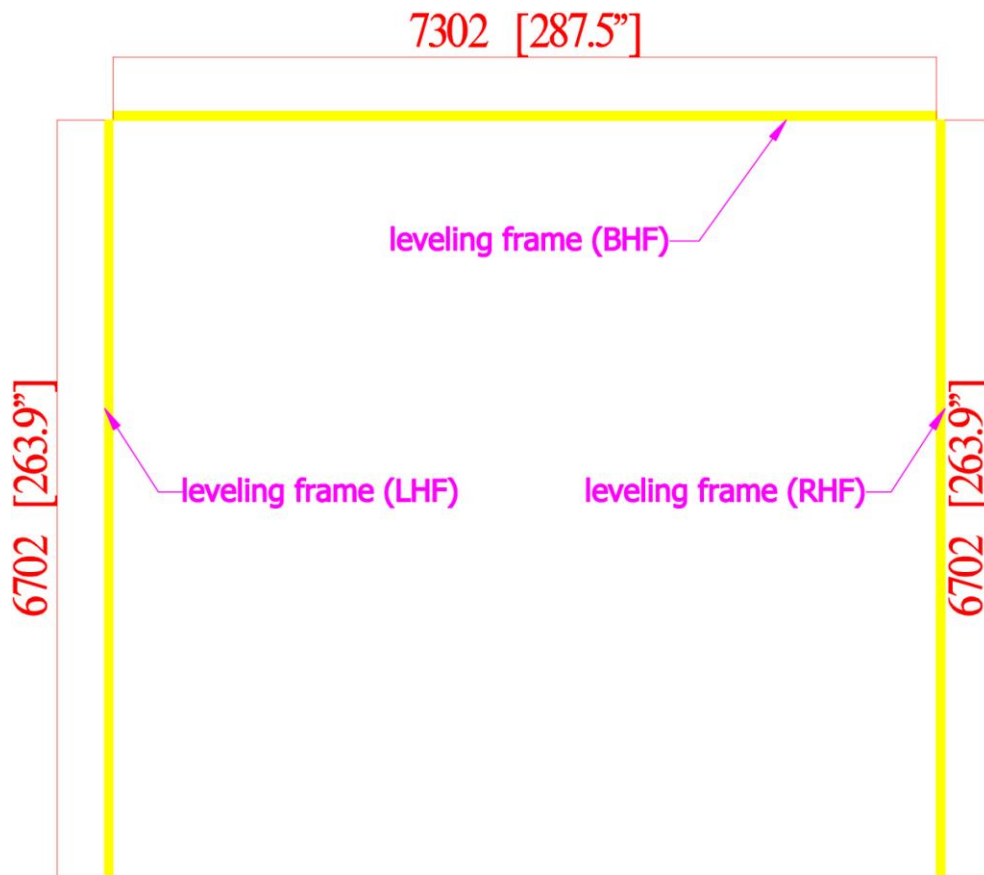
- Take out the number: **BHF**, the length is 7302mm (287.5").
- Center **BHF** at the booth back length 9250mm (364.2") as shown below.



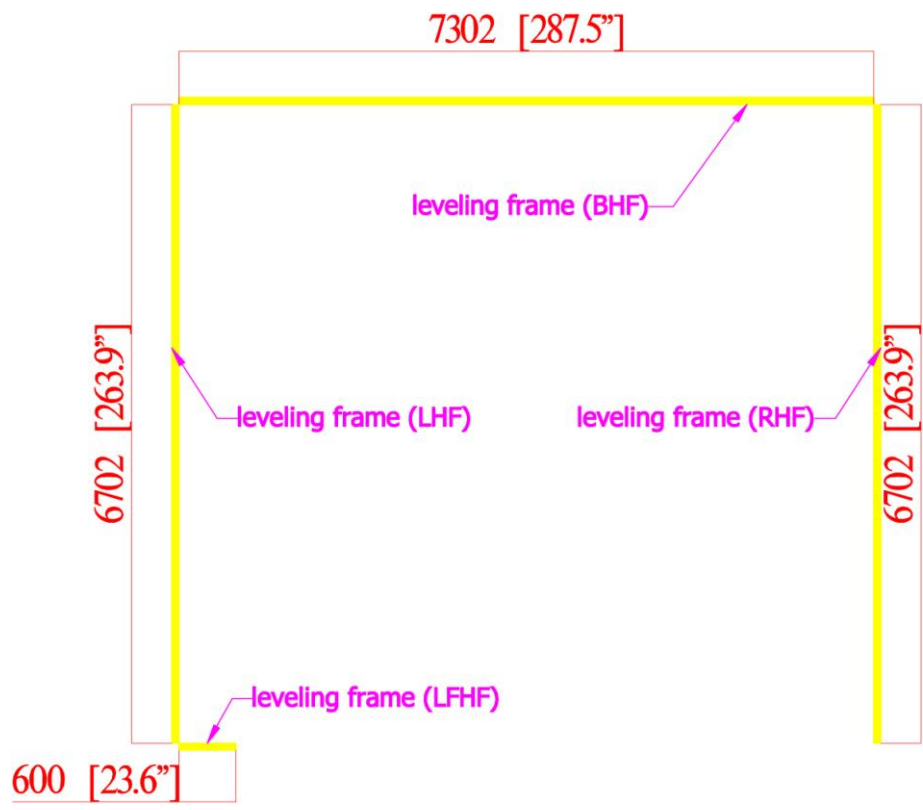
- Take out the number: **LHF**, the length is 6702mm (263.9”).
- Lay **LHF** on the left side of **BHF** when facing the booth.



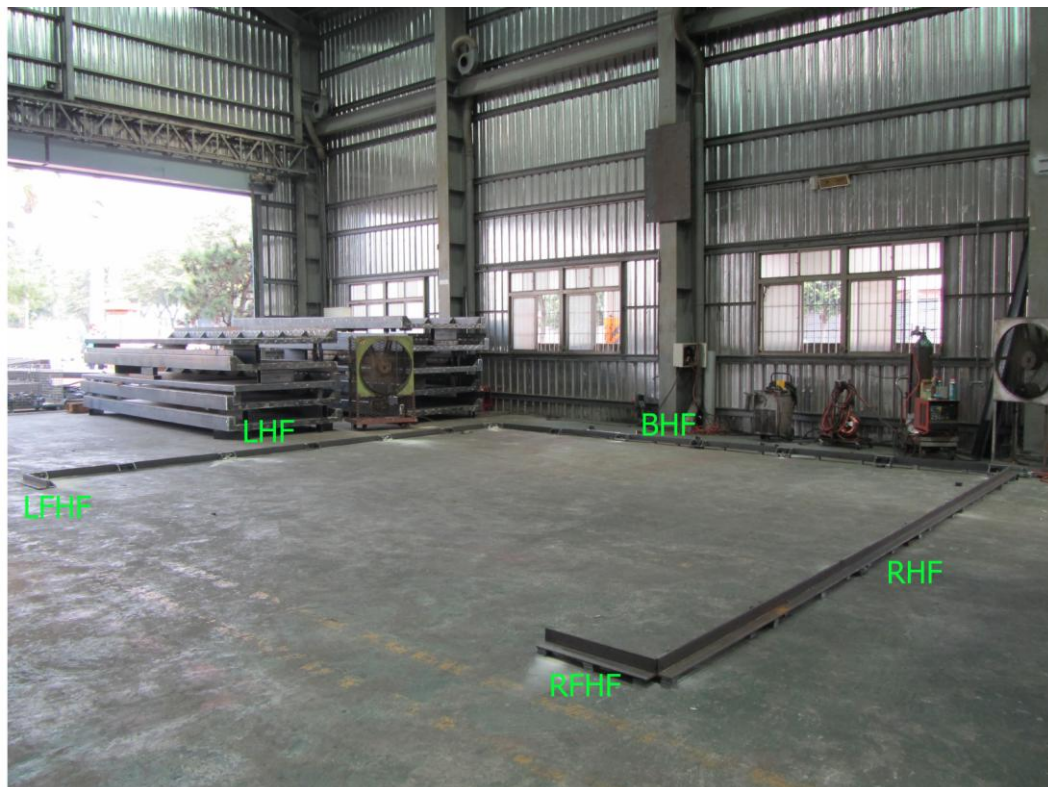
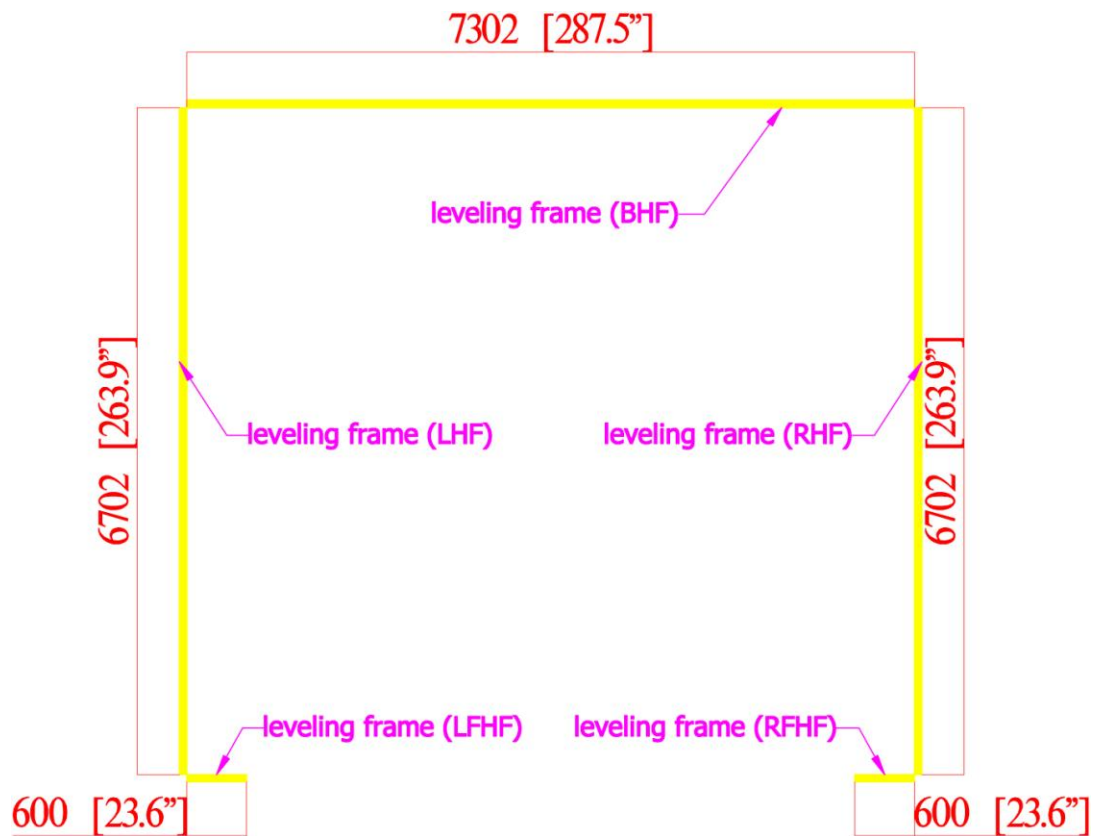
- Take out the number: **RHF**, the length is 6702mm (263.9”).
- Put **RHF** on the right side of **BHF** when facing the booth.



- Take out the number: **LFHF**, the length is 600mm (23.6”).
- Connect **LFHF** at the front end of **LHF** when facing the booth.

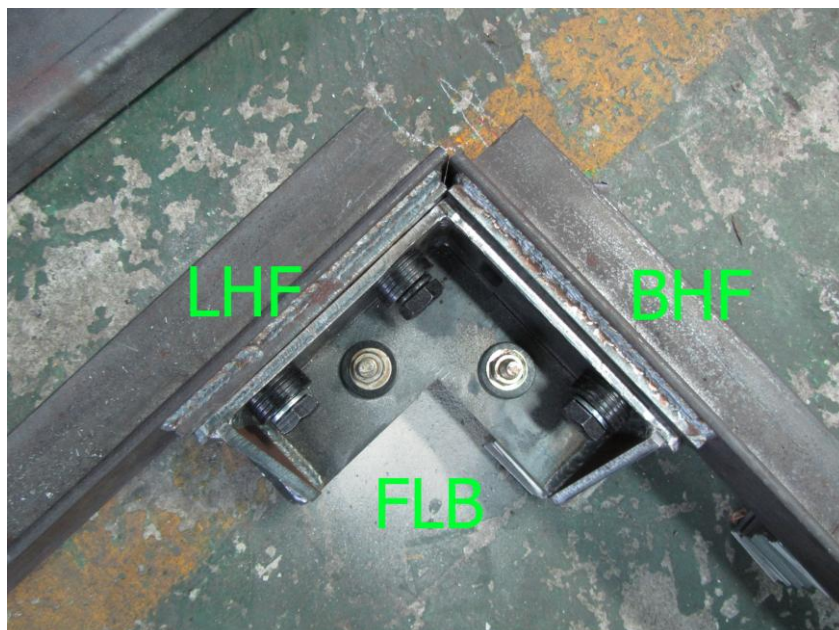
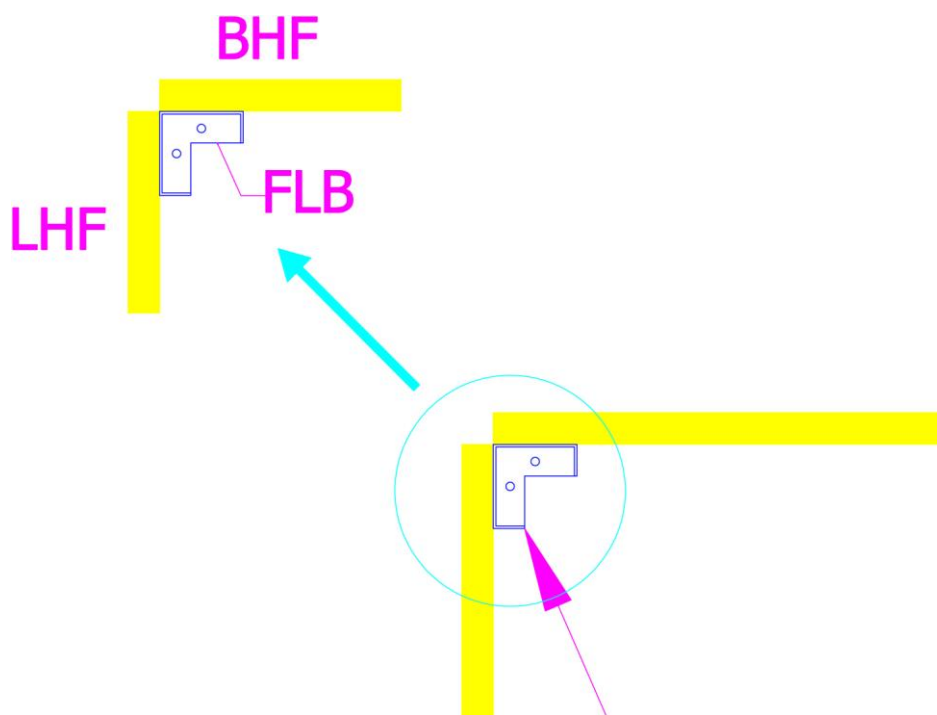


- Take out the number: **RFHF**, the length is 600mm (23.6").
- Connect **RFHF** at the front end of **RHF** when facing the booth.



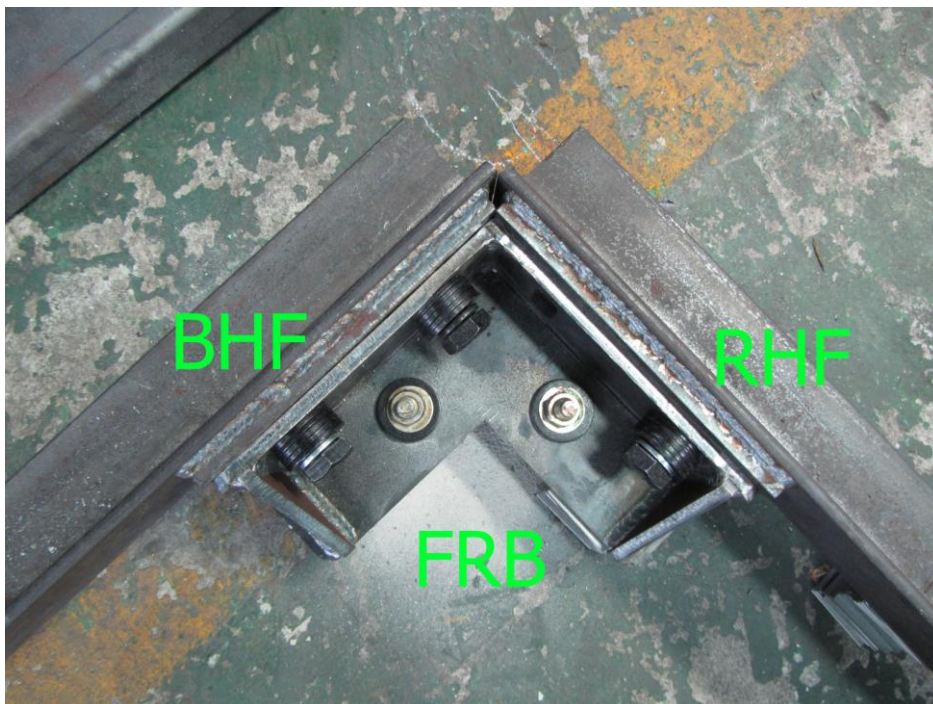
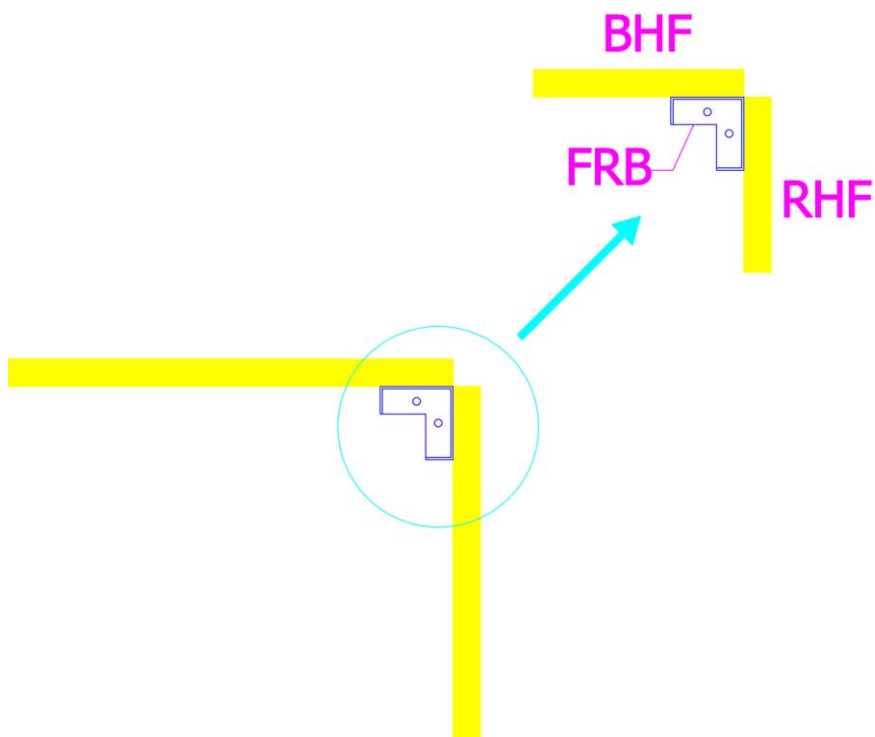
- Take out the number: **FLB**.
- Set **FLB** at the adjoining corner of **BHF** and **LHF** with:

Description		Q'ty
Hex Screw	5/8"*1-1/2"	4
Hex Nut	5/8"	4
Lock Washer	5/8"	4
Flat Washer	5/8"*OD38*3T	8



- Take out the number: **FRB**.
- Set **FRB** at the adjoining corner of **BHF** and **RHF** with:

Description		Q'ty
Hex Screw	5/8"*1-1/2"	4
Hex Nut	5/8"	4
Lock Washer	5/8"	4
Flat Washer	5/8"*OD38*3T	8

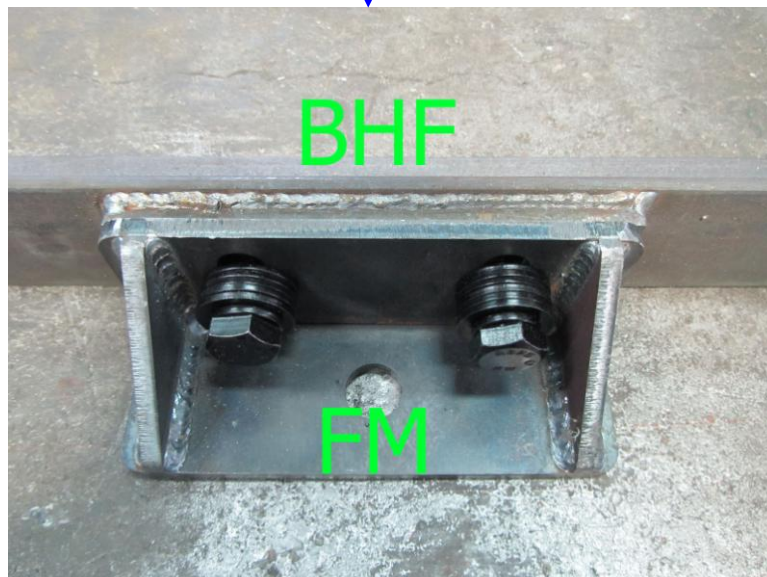
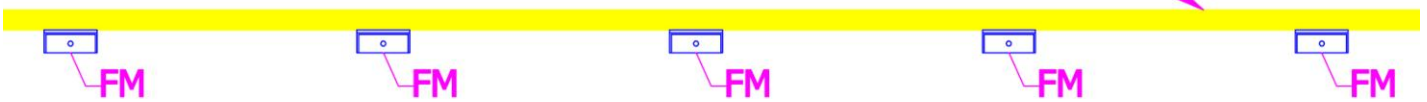




- Take out the number: **FM**.
- Secure **FM** adjacent to **BHF** with:

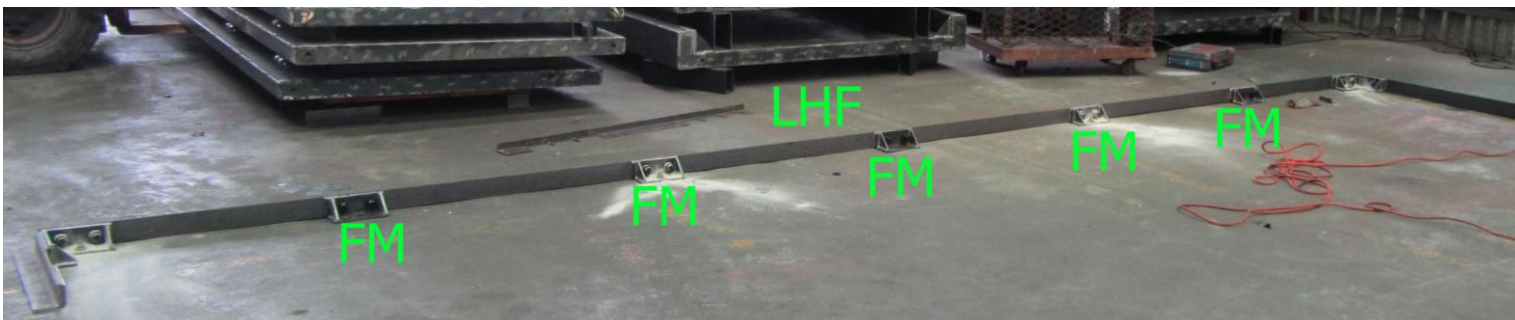
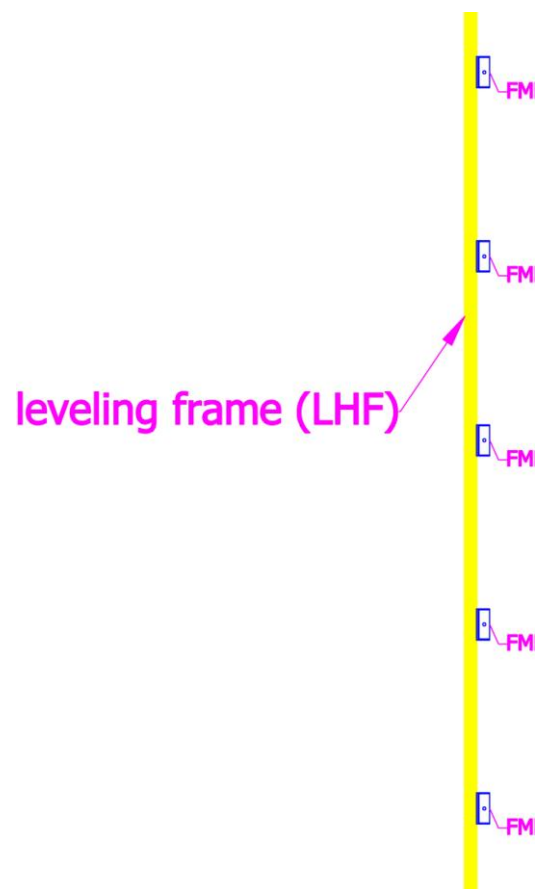
Description		Q'ty
Hex Screw	5/8"*1-1/2"	10
Hex Nut	5/8"	10
Lock Washer	5/8"	10
Flat Washer	5/8"*OD38*3T	20

leveling frame (BHF)



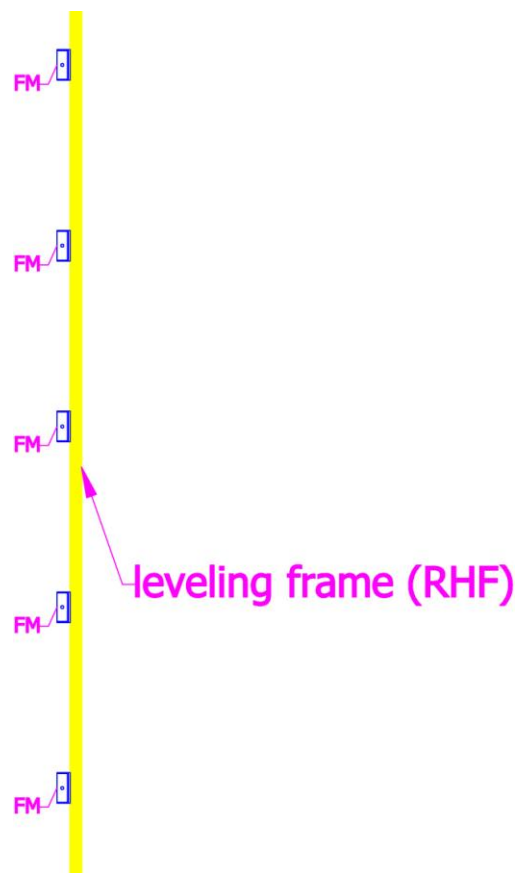
- Take out the number: **FM**.
- Fasten **FM** adjacent to **LHF** with:

Description		Q'ty
Hex Screw	5/8"*1-1/2"	10
Hex Nut	5/8"	10
Lock Washer	5/8"	10
Flat Washer	5/8"*OD38*3T	20



- Take out the number: **FM**.
- Assemble **FM** adjacent to **RHF** with:

Description		Q'ty
Hex Screw	5/8"*1-1/2"	10
Hex Nut	5/8"	10
Lock Washer	5/8"	10
Flat Washer	5/8"*OD38*3T	20

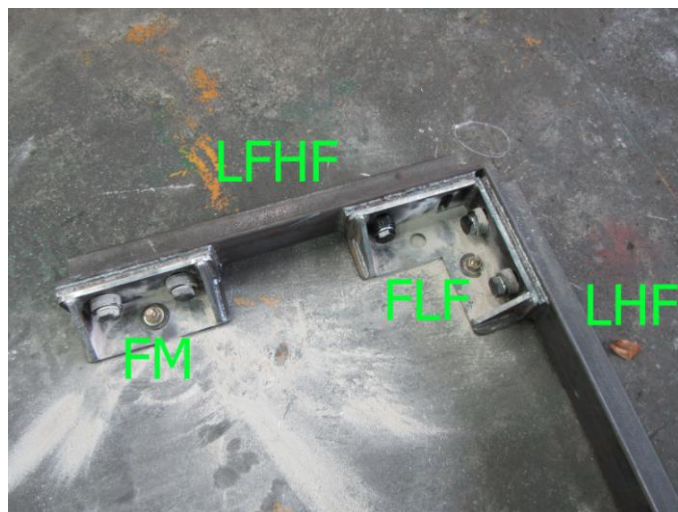
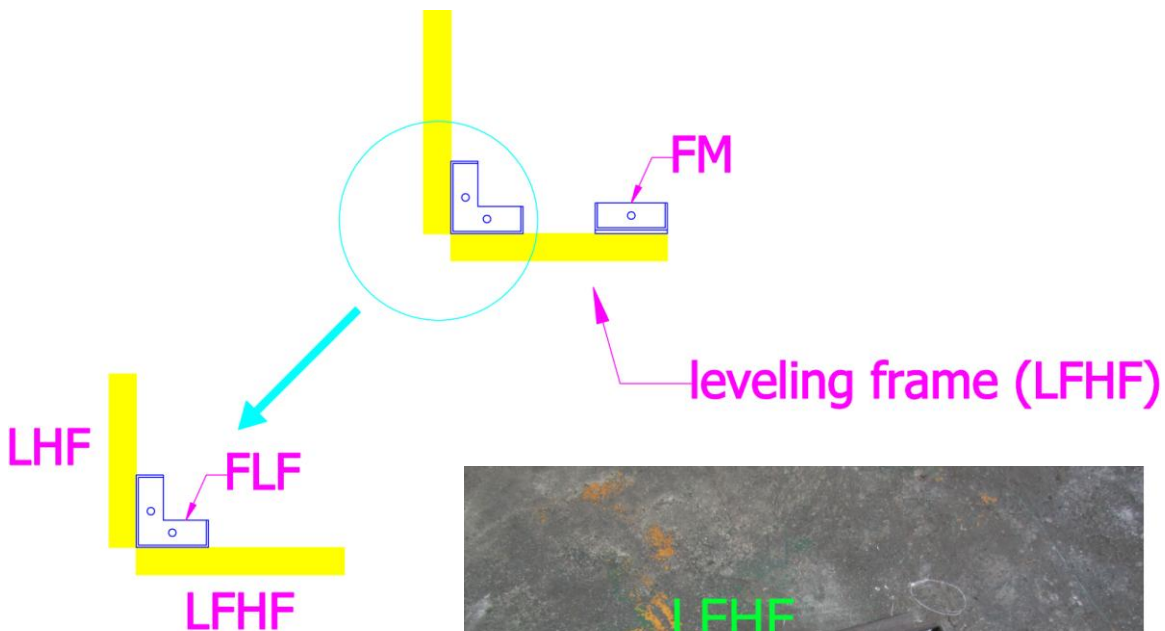


- Take out the number: **FLF** and **FM**.
- Set **FLF** at the adjoining corner of **LHF** and **LFHF** with:

Description		Q'ty
Hex Screw	5/8"*1-1/2"	4
Hex Nut	5/8"	4
Lock Washer	5/8"	4
Flat Washer	5/8"*OD38*3T	8

- Lock **FM** adjacent to **LFHF** with:

Description		Q'ty
Hex Screw	5/8"*1-1/2"	2
Hex Nut	5/8"	2
Lock Washer	5/8"	2
Flat Washer	5/8"*OD38*3T	4



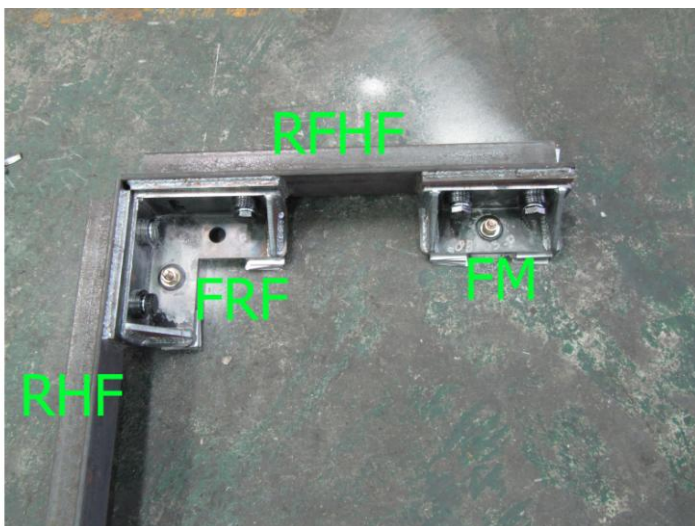
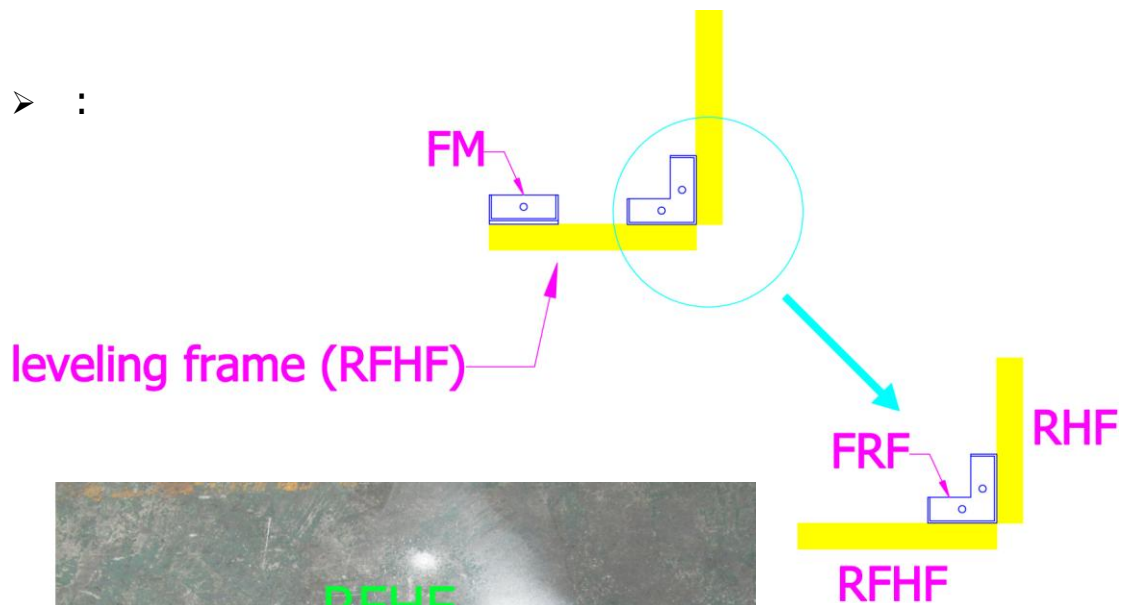
- Take out the number: **FRF** and **FM**.
- Set **FRF** at the adjoining corner of **RHF** and **RFHF** with:

Description		Q'ty
Hex Screw	5/8"*1-1/2"	4
Hex Nut	5/8"	4
Lock Washer	5/8"	4
Flat Washer	5/8"*OD38*3T	8

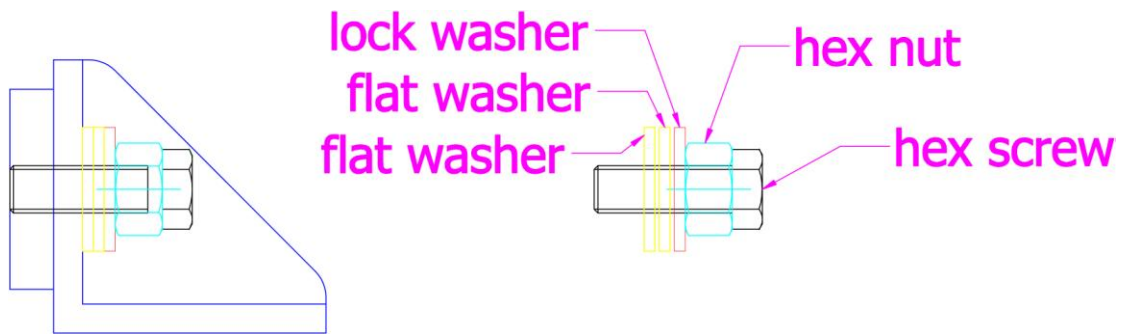
- Lock **FM** adjacent to **RFHF** with:

Description		Q'ty
Hex Screw	5/8"*1-1/2"	2
Hex Nut	5/8"	2
Lock Washer	5/8"	2
Flat Washer	5/8"*OD38*3T	4

- :



- Pay attention to hardware assembly method for leveling frame as shown below.



- Please fill in the steel pads for field ground leveling to the gaps in-between the leveling frame and the floor.



- Fasten sleeve anchors (5/8"\*5"L) to field bolted after installations for leveling frame.

