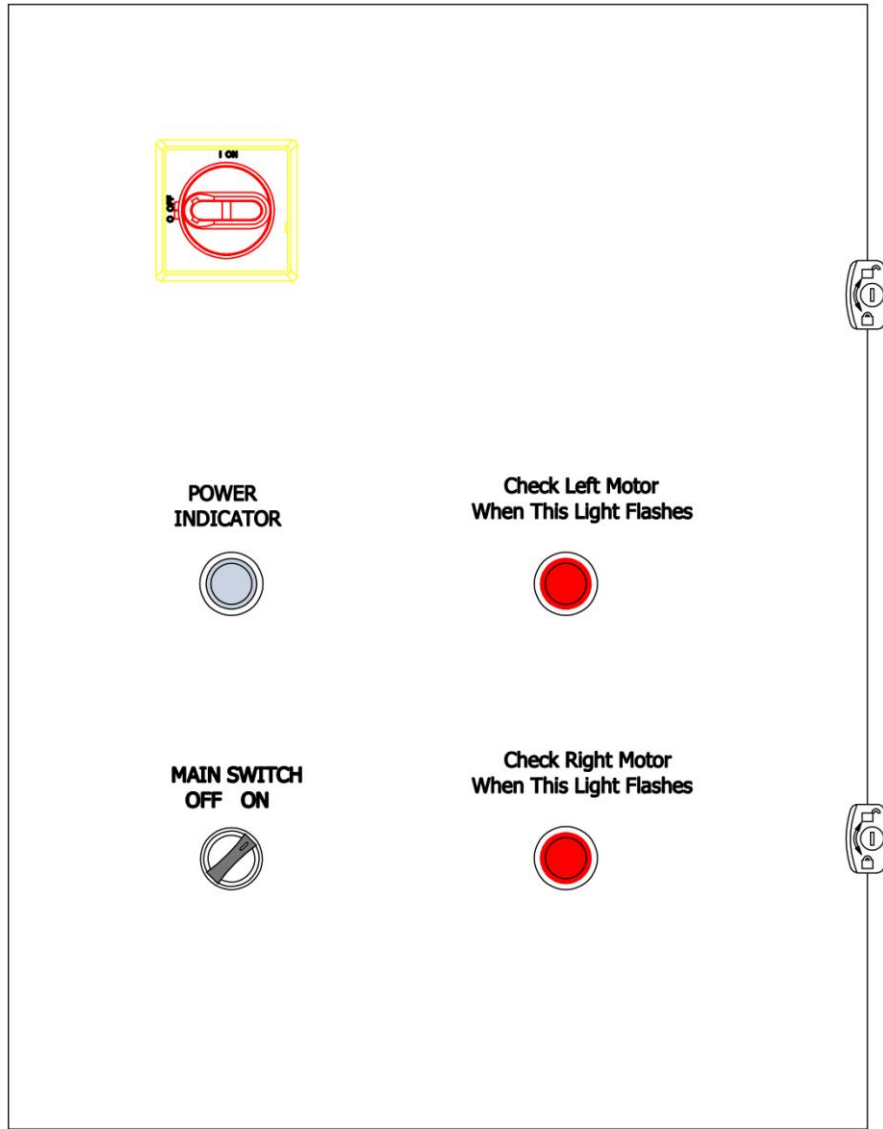
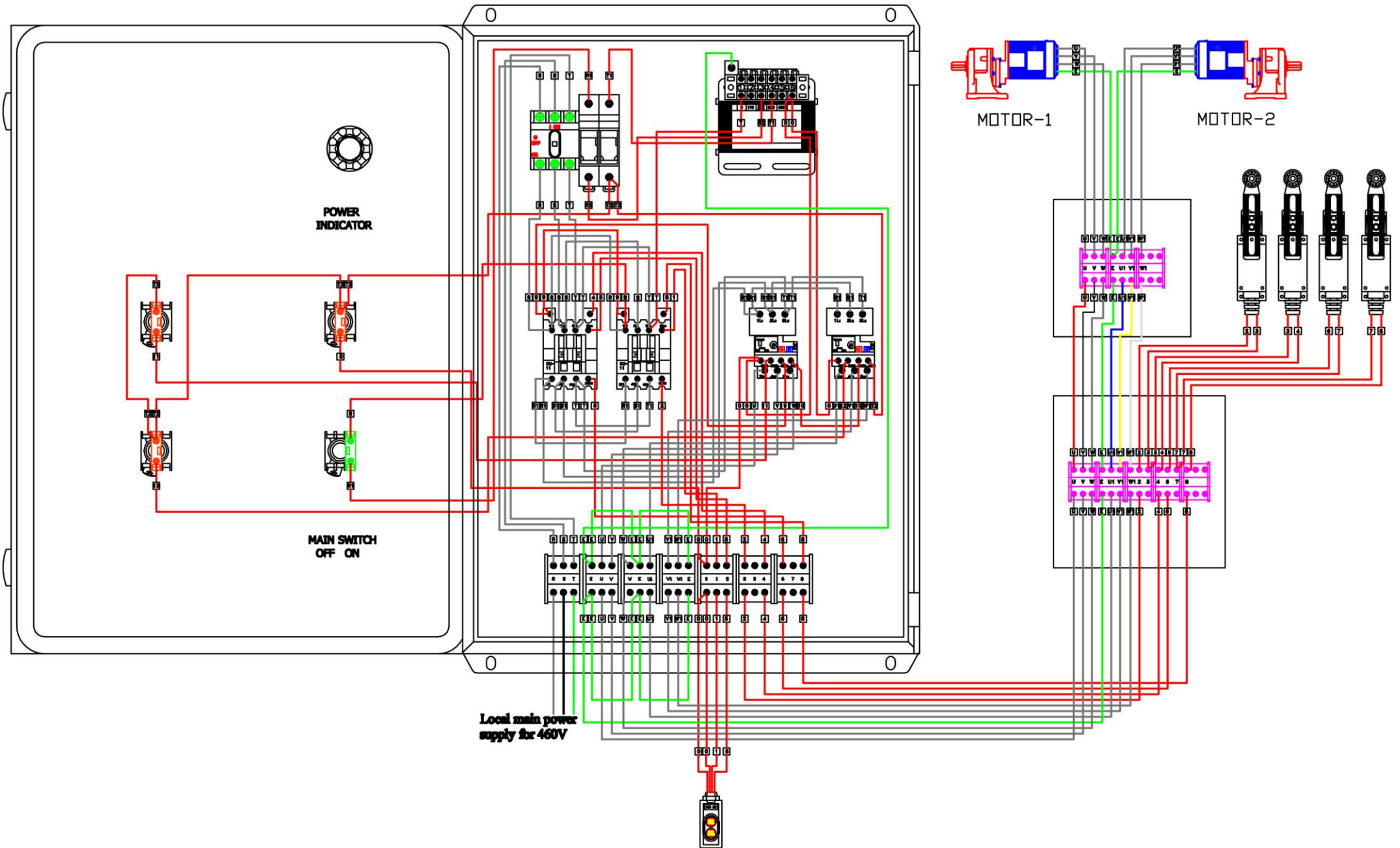


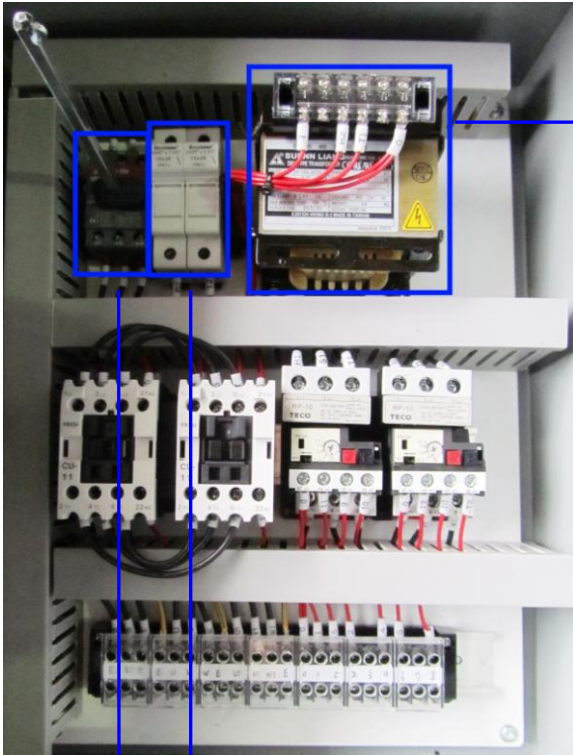
Main Electrical Wiring for WB-10000



Main Electrical Wiring for WB-10000



Main Electrical Component for WB-10000



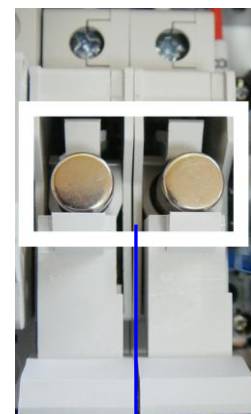
◆ Transformer for 460V.



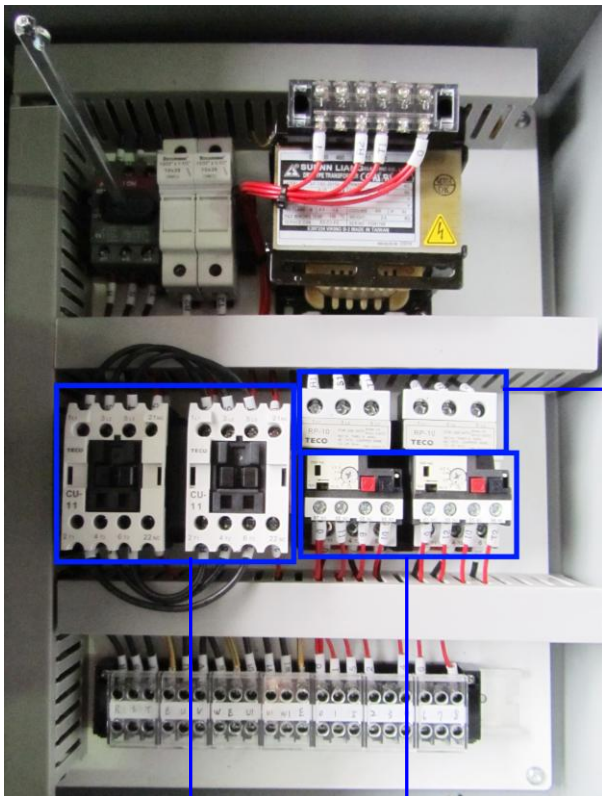
◆ Panel disconnect switch.



◆ Fuse bus.



Main Electrical Component for WB-10000



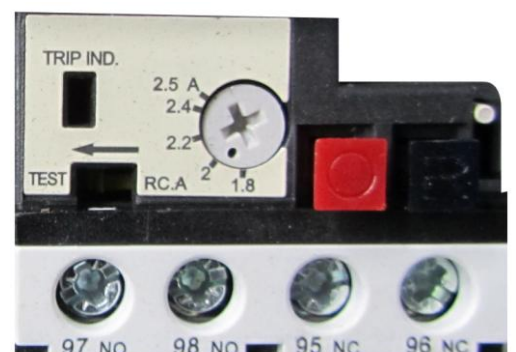
◆ Overload Mounting base.



◆ Magnetic contactor.

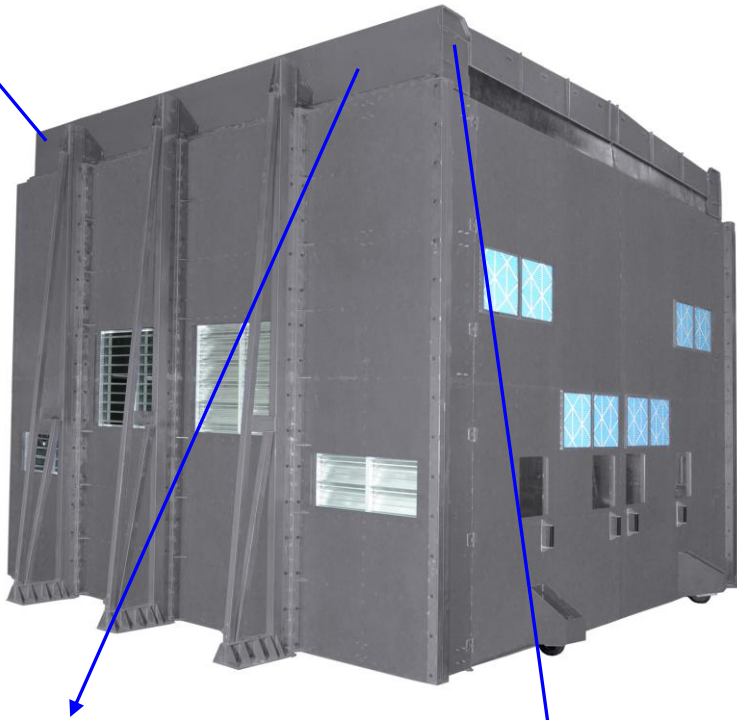


◆ Thermal Relay for motor of 1HP.



Main Electrical Component for WB-10000

➤ Left rear limit switch is here.



➤ Left motor.



➤ Right front limit switch is here.



➤ Right rear limit switch is here.



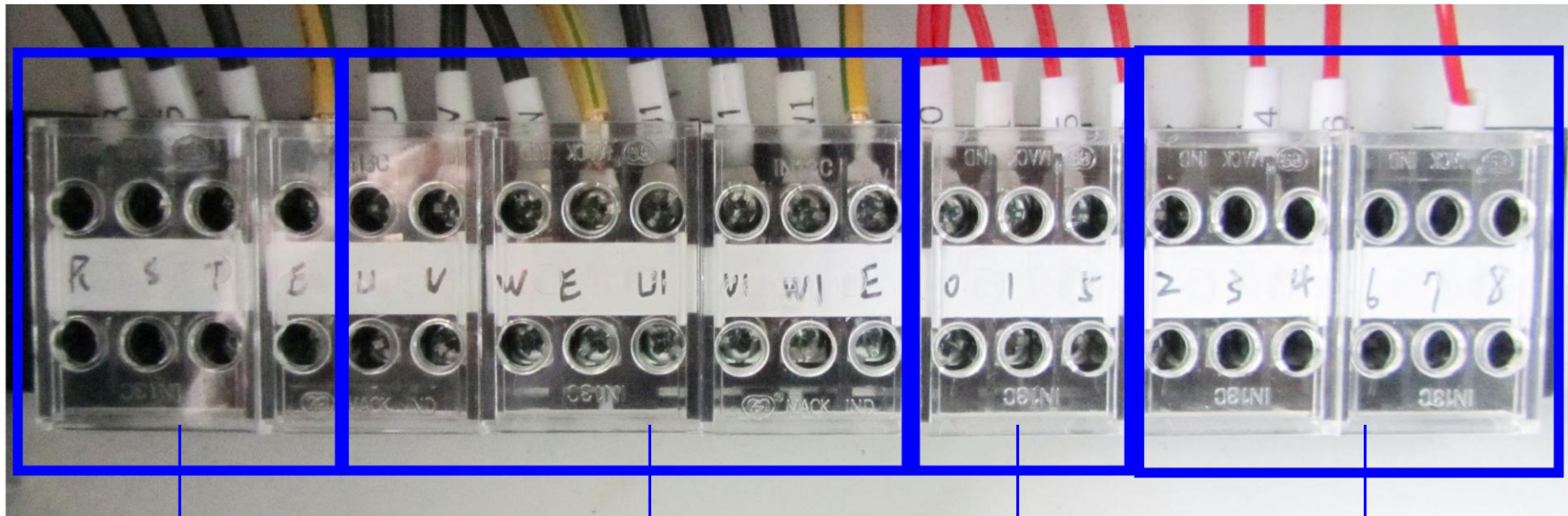
➤ Left front limit switch is here.



➤ Right motor.



Main Electrical Component for WB-10000



◆ Local main power supply for 460V.

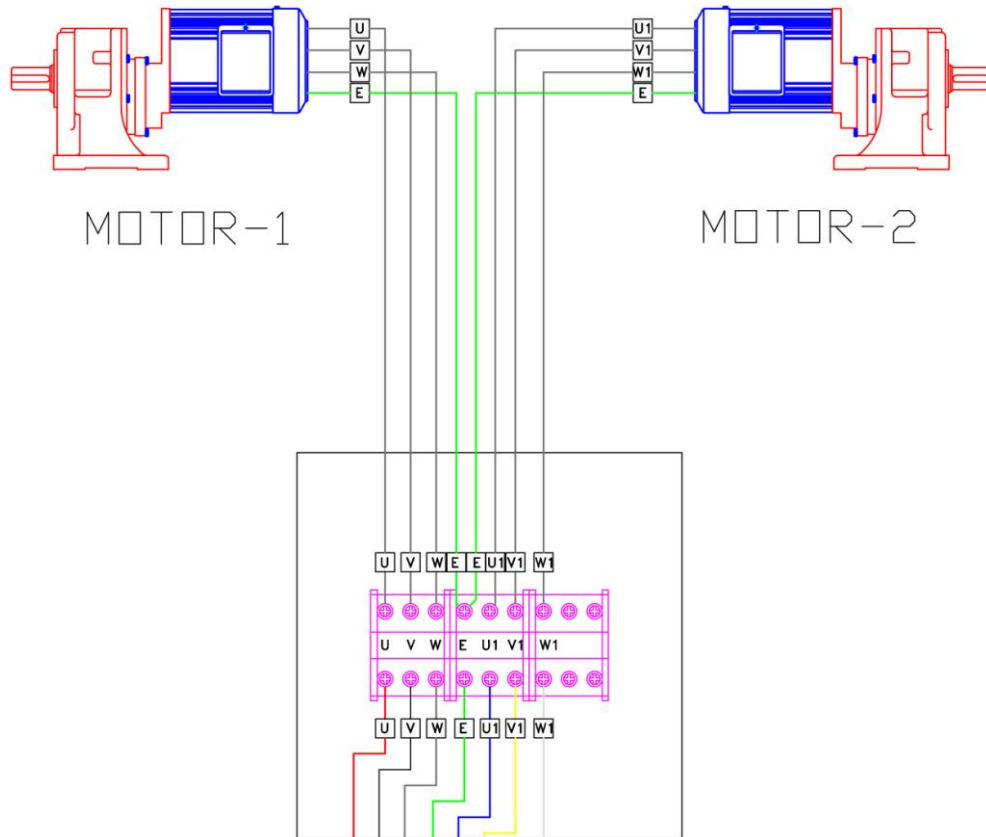
◆ Connect to the electrical junction box for WB-10000.

◆ Connect to the complete pendant push button control for WB-10000.

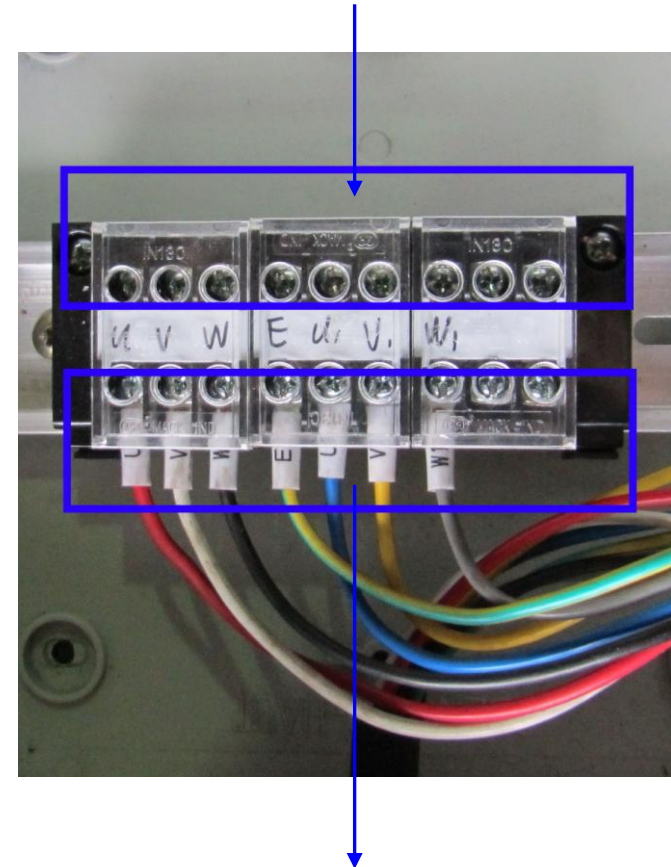
◆ Connect to the electrical junction box for WB-10000.



Main Electrical Component for WB-10000

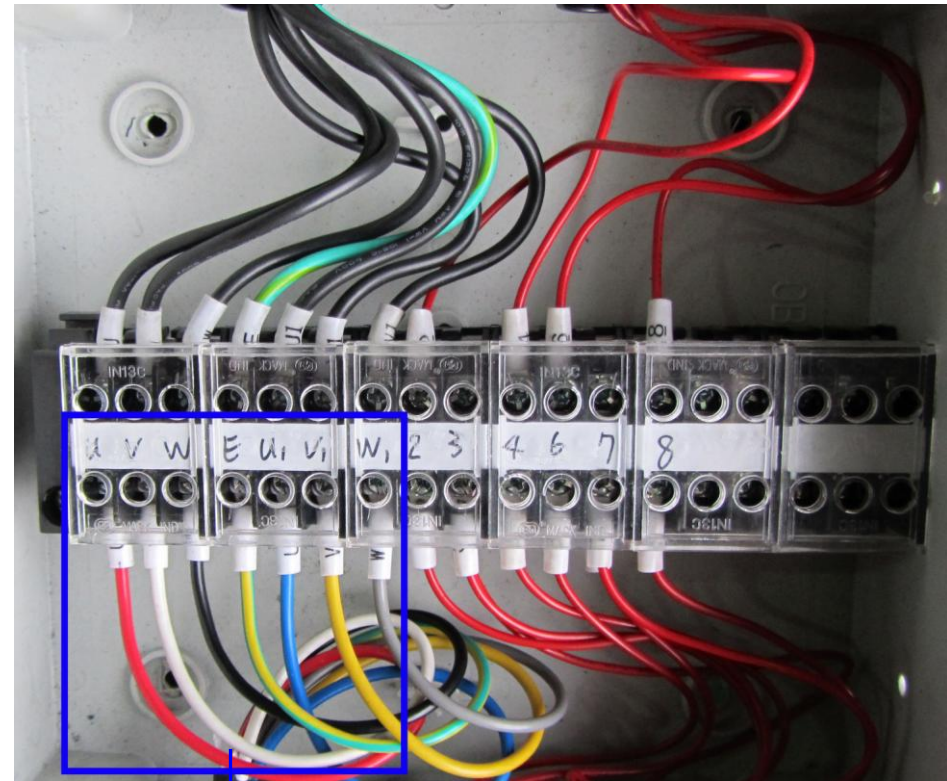
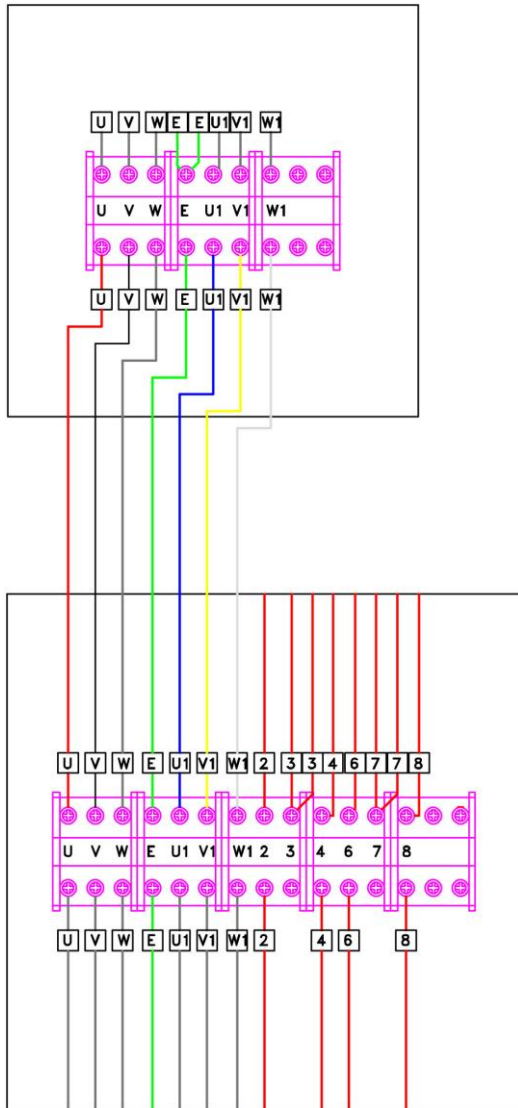


◆ Terminals connect to the motor.



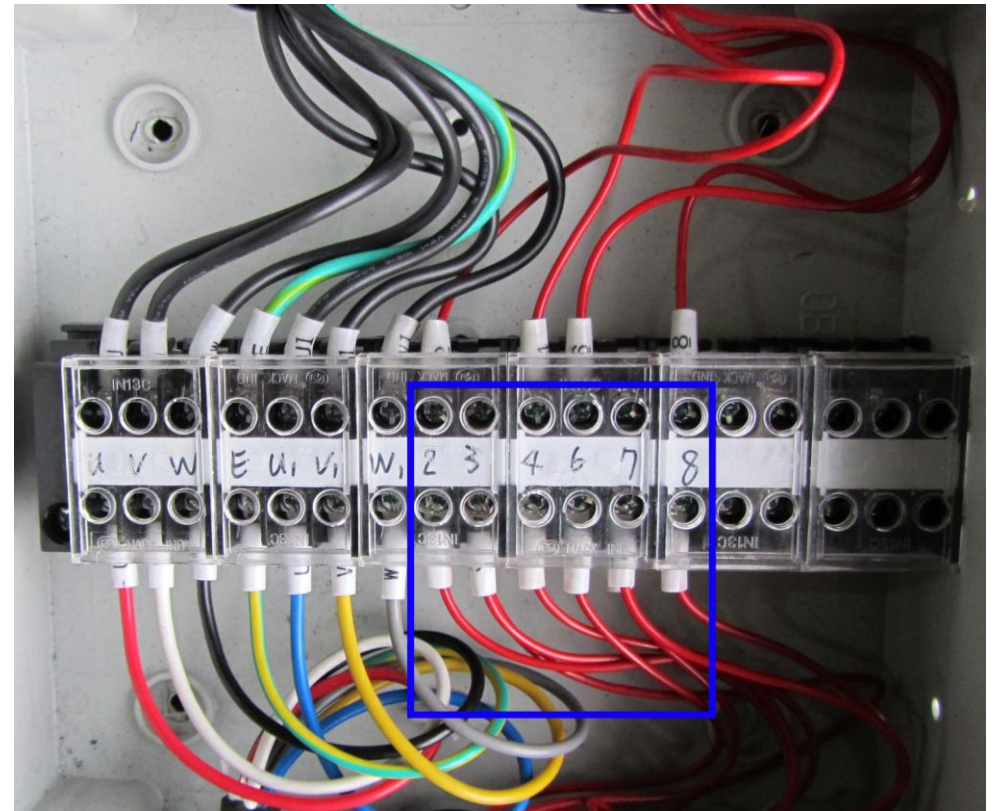
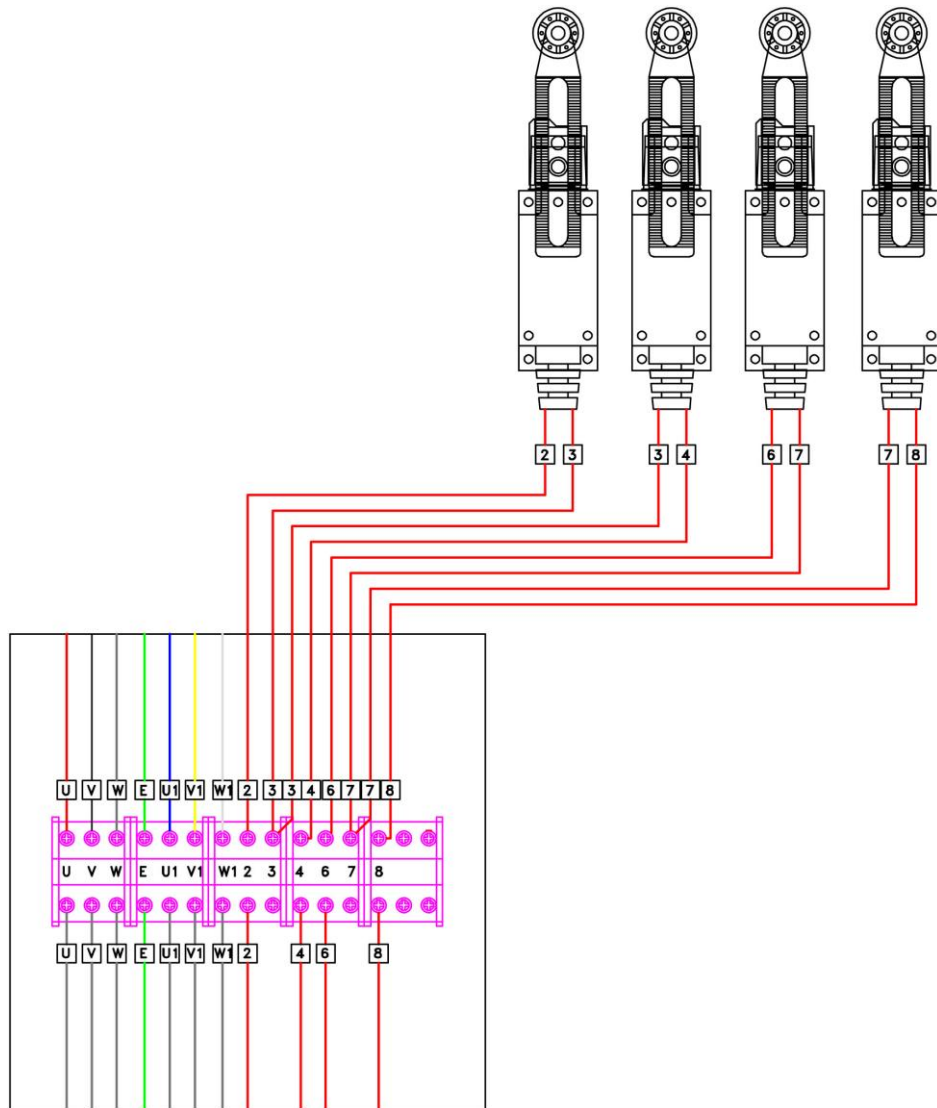
◆ Terminals connect to the electrical junction box.

Main Electrical Component for WB-10000



◆ **Terminals connect to the electrical junction box.**

Main Electrical Component for WB-10000



- ◆ 2 & 3 : The left front limit switch.
- ◆ 3 & 4 : The right front limit switch.
- ◆ 6 & 7 : The left rare limit switch.
- ◆ 7 & 8 : The right rare limit switch.

