



**Date:** June 09, 2011

**Project:** Welding Booth

**To:** IOC, Canada

**Attn:**

**Recommended Equipment:**

Welding Booth

---

**Avani Environmental Intl. Inc.**  
95 Cypress Drive  
Youngsville, NC 27596  
[www.avanienvironmental.com](http://www.avanienvironmental.com)

Phone: (919) 570-2862  
Fax: (919) 570-2863  
Email: [info@avanienvironmental.com](mailto:info@avanienvironmental.com)  
[www.weldingbooths.com](http://www.weldingbooths.com)

The drawings, AutoCAD, 3-D Models, and specifications are the property of Avani Environmental Intl. Inc. (AE) and may not be reproduced, distributed, modified, or otherwise used, except provided herein, without the express written permission of AE.

DO NOT SCALE

IF IN DOUBT ASK

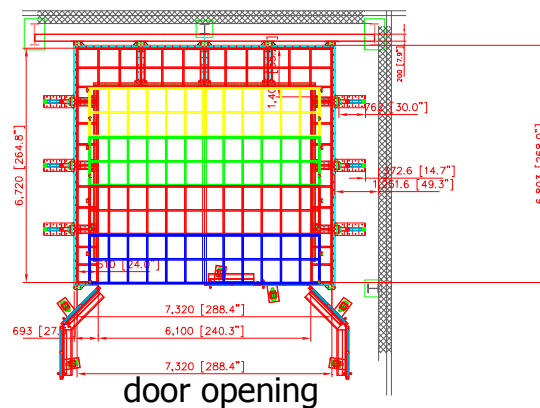


Revisions			
Rev	Description	Date	Approved

top view

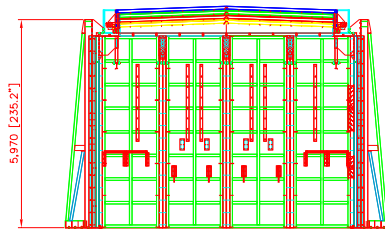
left side

right side

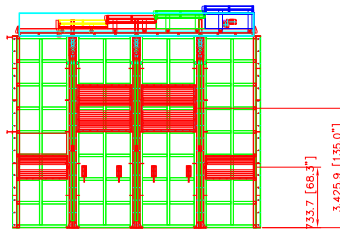


door opening

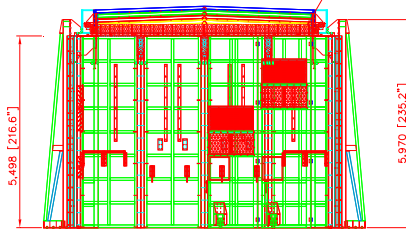
6mm rubber plate



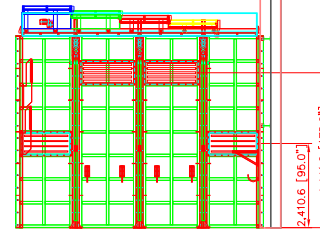
back view



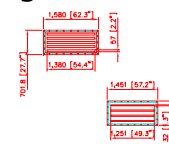
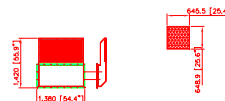
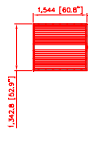
left side view



front view



right side view



AVANI ENVIRONMENTAL INTL. INC. Sales Department  
 95 Cypress Drive (919) 570-2862  
 Youngsville, NC 27596 info@avanienvironmental.com

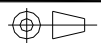
Date	Name	Part Number:
2011-06-09	***	***
Drawn by:	Checked by:	

The drawings, AutoCAD, 3-D Models, and specifications are the property of Avani Environmental Intl. Inc. (AE) and may not be reproduced, distributed, modified, or otherwise used, except provided herein, without the express written permission of AE.

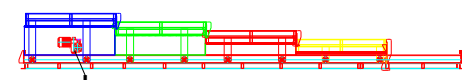
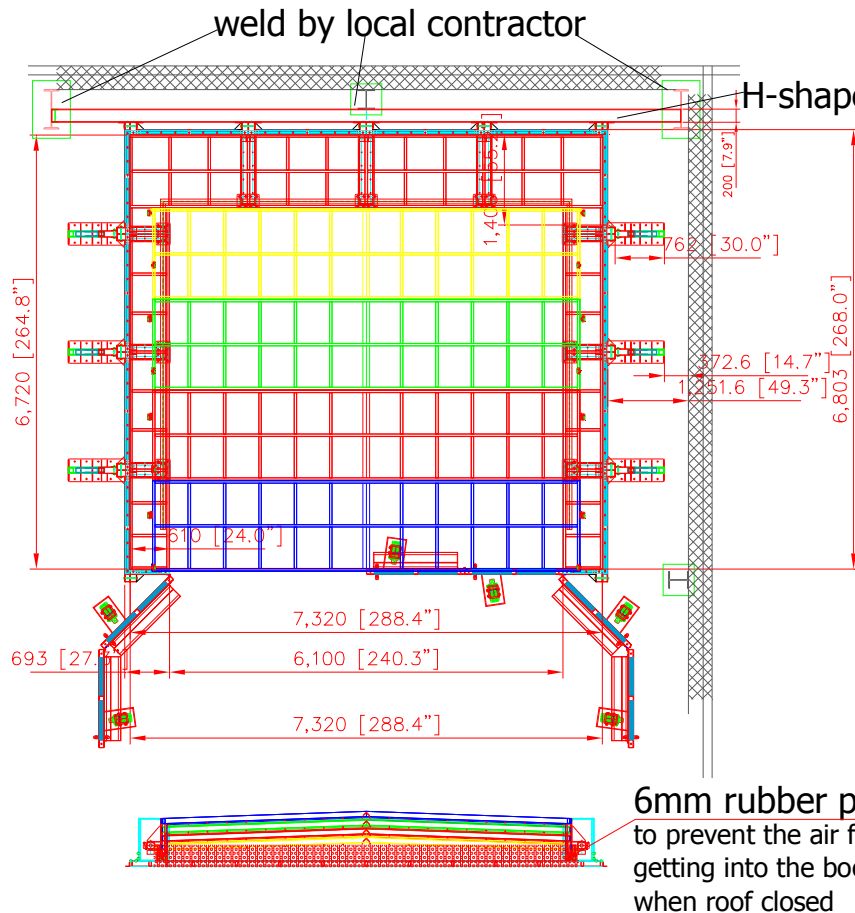
Title:	IOC Welding Booth	
Size	Scale	Drawing Number:
J	1 = 1	***

DO NOT SCALE

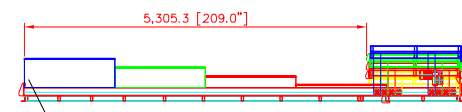
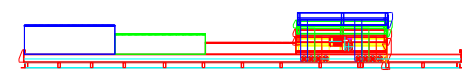
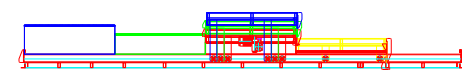
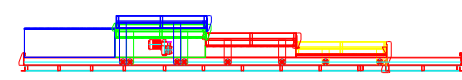
IF IN DOUBT ASK



Revisions			
Rev	Description	Date	Approved



motor



operation as attached 3-D cover to prevent the air from getting into the booth when roof closed

**top cover panel x 3pcs:**

- (1) 293.9" x 47.3" x 3.1"
- (2) 220.2" x 26.8" x 3.1"
- interior gussets: square pipe 2.95" x 2.95" x 2.3mm thickness (13-gauge)
- steel panel cover: 2mm (14-gauge)

**retractable top x 4pcs:**

- (4) 259.7" x 55.2" x 3.2"
- entire open top: 209"
- motor driven

AVANI ENVIRONMENTAL INTL. INC. Sales Department  
 95 Cypress Drive (919) 570-2862  
 Youngsville, NC 27596 info@avanienvironmental.com

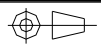
Date	Name	Part Number:
2011-06-09	***	***
Drawn by:	Checked by:	

The drawings, AutoCAD, 3-D Models, and specifications are the property of Avani Environmental Intl. Inc. (AE) and may not be reproduced, distributed, modified, or otherwise used, except provided herein, without the express written permission of AE.

Title:	IOC Welding Booth	
Size	Scale	Drawing Number:
J	1 = 1	***

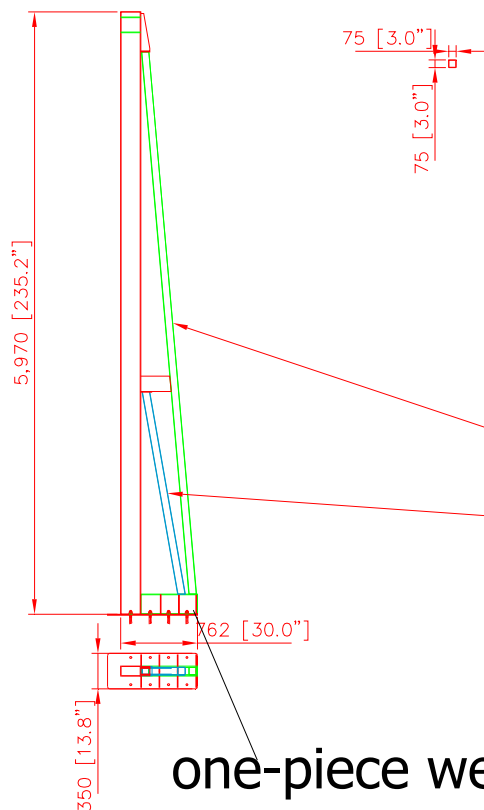
DO NOT SCALE

IF IN DOUBT ASK



Revisions

Rev	Description	Date	Approved
-----	-------------	------	----------



**supports:**

- 235.2" x 30"

**square pipe:**

- (2) 3" x 3" x 0.4"thickness
- (2) 3" x 3" x 0.4"thickness

one-piece weld

AVANI ENVIRONMENTAL INTL. INC. Sales Department  
 95 Cypress Drive  
 Youngsville, NC 27596  
 (919) 570-2862  
 info@avanienvironmental.com

Date	Name	Part Number:
2011-06-09	***	***
Drawn by:	Checked by:	

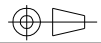
Title: **IOC Welding Booth**

The drawings, AutoCAD, 3-D Models, and specifications are the property of Avani Environmental Intl. Inc. (AE) and may not be reproduced, distributed, modified, or otherwise used, except provided herein, without the express written permission of AE.

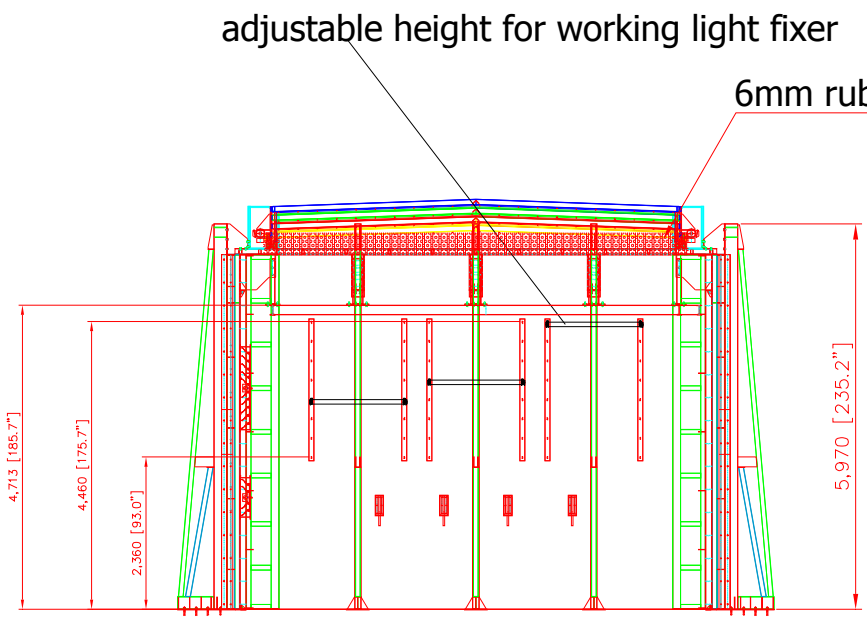
Size	Scale	Drawing Number:
J	1 = 1	***

DO NOT SCALE

IF IN DOUBT ASK



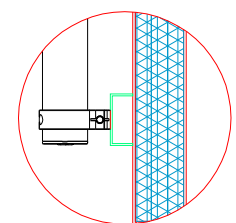
Revisions			
Rev	Description	Date	Approved



adjustable height for working light fixer

6mm rubber plate

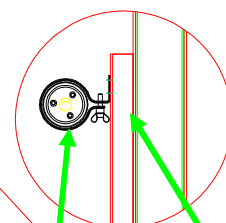
B view



B view 10:1

light fixer:  
option 1: vertical

A view



A view 10:1

light fixer:  
option 2: horizontal



**- H-shape hanging track: 3" x 5.9"**  
**- height off the ground: 185.7"**

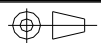
AVANI ENVIRONMENTAL INTL. INC. Sales Department  
 95 Cypress Drive  
 Youngsville, NC 27596  
 (919) 570-2862  
 info@avanienvironmental.com

Date	Name	Part Number:
2011-06-09	***	***
Checked by:		
The drawings, AutoCAD, 3-D Models, and specifications are the property of Avani Environmental Intl. Inc. (AE) and may not be reproduced, distributed, modified, or otherwise used, except provided herein, without the express written permission of AE.		

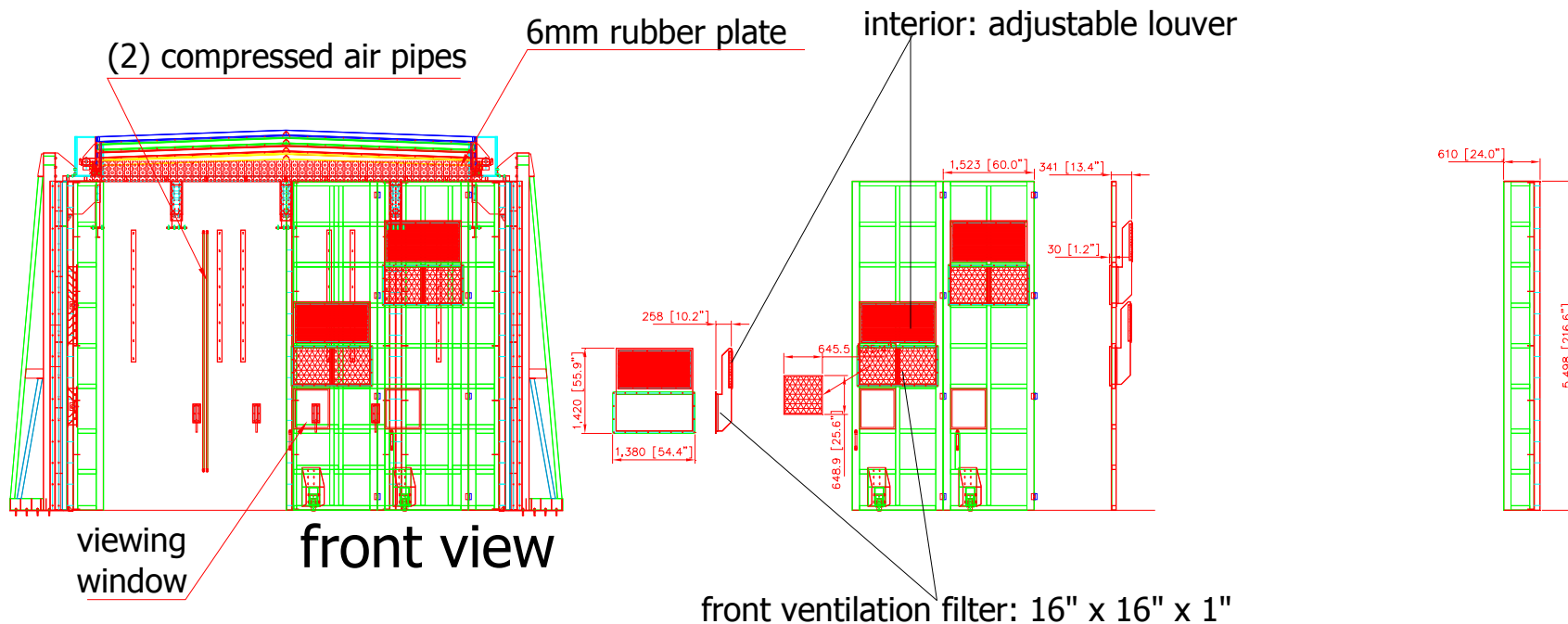
Title:	IOC Welding Booth	
Size	Scale	Drawing Number:
J	1 = 1	***

DO NOT SCALE

IF IN DOUBT ASK



Revisions			
Rev	Description	Date	Approved



- non-recessed lights: (9) 59.1"L Lights
- front panel: (2) 216.6" x 24" x 3.1"
  - interior gussets: square pipe 2.95" x 2.95" x 2.3mm thickness (13-gauge)
  - steel panel cover: 4mm (8-gauge)
- front door: (4) 216.6" x 60" x 3.1"
  - entire open front: 252.3"
  - interior gussets: square pipe 2.95" x 2.95" x 2.3mm thickness (13-gauge)
  - steel panel cover: 4mm (8-gauge)

AVANI ENVIRONMENTAL INTL. INC. Sales Department 95 Cypress Drive Youngsville, NC 27596 (919) 570-2862 info@avanienvironmental.com	Drawn by:	Date	Name	Part Number:	Title:	
	Checked by:	2011-06-09	***	***	IOC Welding Booth	
	The drawings, AutoCAD, 3-D Models, and specifications are the property of Avani Environmental Intl. Inc. (AE) and may not be reproduced, distributed, modified, or otherwise used, except provided herein, without the express written permission of AE.				Size	Scale
				J	1 = 1	***

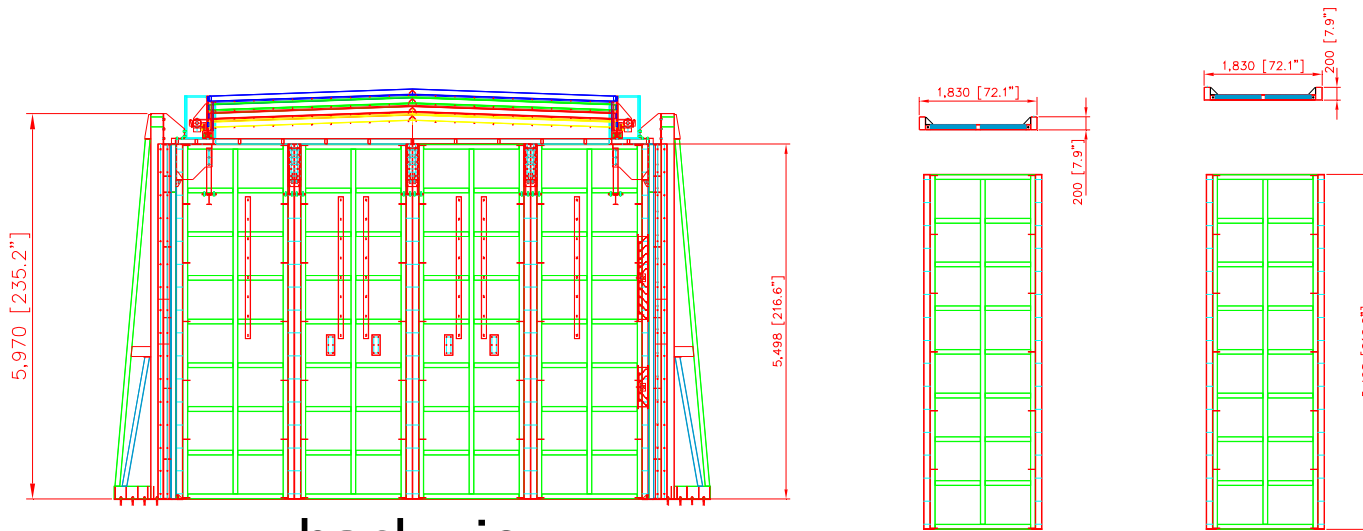
DO NOT SCALE

IF IN DOUBT ASK



Revisions

Rev	Description	Date	Approved
-----	-------------	------	----------



back view

**back panel: (4)**

- (4) 216.6" x 72.1" x 3.1"

- interior gussets: square pipe 2.95" x 2.95" x 2.3mm thickness (13-gauge)

- steel panel cover: 4mm (8-gauge)

AVANI ENVIRONMENTAL INTL. INC. Sales Department  
 95 Cypress Drive (919) 570-2862  
 Youngsville, NC 27596 info@avanienvironmental.com

Date	Name	Part Number:
2011-06-09	***	***
Drawn by:	Checked by:	

Title: **IOC Welding Booth**

The drawings, AutoCAD, 3-D Models, and specifications are the property of Avani Environmental Intl. Inc. (AE) and may not be reproduced, distributed, modified, or otherwise used, except provided herein, without the express written permission of AE.

Size	Scale	Drawing Number:
J	1 = 1	***

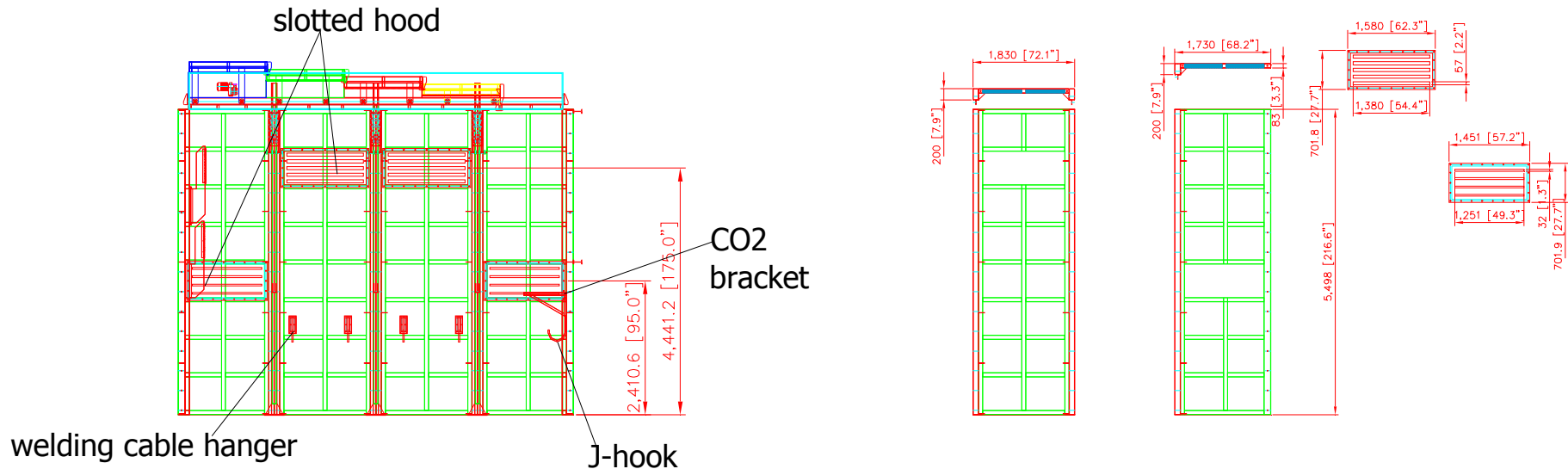
DO NOT SCALE

IF IN DOUBT ASK



Revisions

Rev	Description	Date	Approved
-----	-------------	------	----------



### right side view

#### side panel x 4pcs:

- (2) 72.1" x 216.6" x 3.1" (inlet opening: 62.3" x 27.7")
  - interior gussets: square pipe 2.95" x 2.95" x 2.3mm thickness (13-gauge)
  - steel panel cover: 4mm (8-gauge)
  
- (2) 68.2" x 216.6" x 3.1" (inlet opening: 57.2" x 27.7")
  - interior gussets: square pipe 2.95" x 2.95" x 2.3mm thickness (13-gauge)
  - steel panel cover: 4mm (8-gauge)

AVANI ENVIRONMENTAL INTL. INC. Sales Department  
 95 Cypress Drive (919) 570-2862  
 Youngsville, NC 27596 info@avanienvironmental.com

Date	Name	Part Number:
2011-06-09	***	***
Drawn by:	Checked by:	

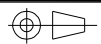
Title: **IOC Welding Booth**

The drawings, AutoCAD, 3-D Models, and specifications are the property of Avani Environmental Intl. Inc. (AE) and may not be reproduced, distributed, modified, or otherwise used, except provided herein, without the express written permission of AE.			Size	Scale	Drawing Number:
			J	1 = 1	***



DO NOT SCALE

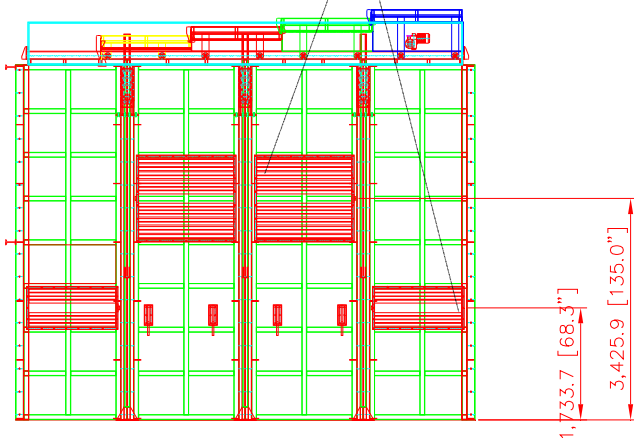
IF IN DOUBT ASK



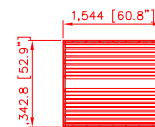
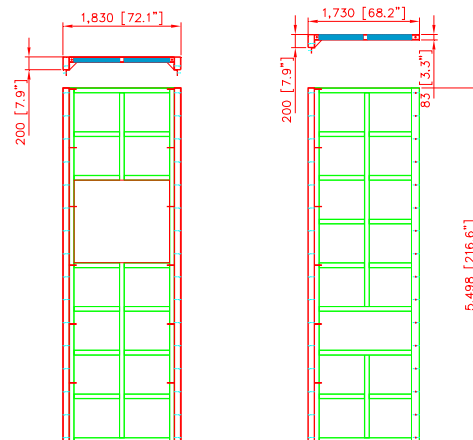
Revisions

Rev	Description	Date	Approved
-----	-------------	------	----------

adjustable louver



left side view



side panel x 4pcs:

- (2) 72.1" x 216.6" x 3.1" (inlet opening: 60.8" x 52.9")
  - interior gussets: square pipe 2.95" x 2.95" x 2.3mm thickness (13-gauge)
  - steel panel cover: 4mm (8-gauge)
- (2) 68.2" x 216.6" x 3.1" (inlet opening: 55.9" x 26.2")
  - interior gussets: square pipe 2.95" x 2.95" x 2.3mm thickness (13-gauge)
  - steel panel cover: 4mm (8-gauge)

AVANI ENVIRONMENTAL INTL. INC. Sales Department  
 95 Cypress Drive (919) 570-2862  
 Youngsville, NC 27596 info@avanienvironmental.com

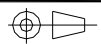
Drawn by:	Date	Name	Part Number:	Title:
Checked by:	2011-06-09	***	***	IOC Welding Booth

The drawings, AutoCAD, 3-D Models, and specifications are the property of Avani Environmental Intl. Inc. (AE) and may not be reproduced, distributed, modified, or otherwise used, except provided herein, without the express written permission of AE.

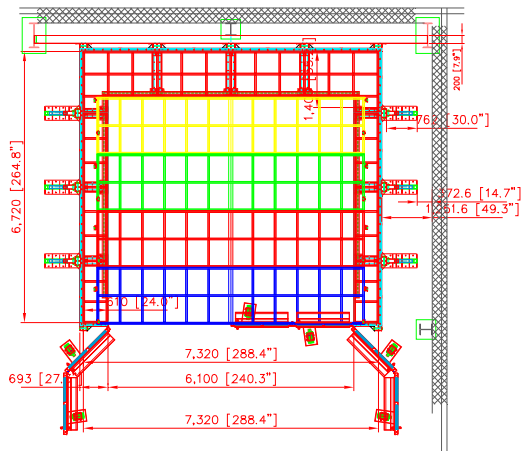
Size	Scale	Drawing Number:
J	1 = 1	***

DO NOT SCALE

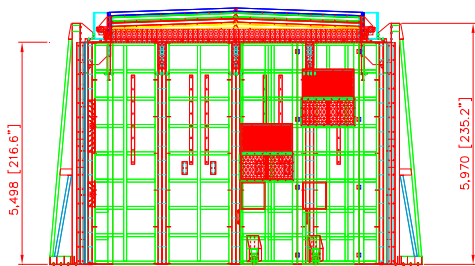
IF IN DOUBT ASK



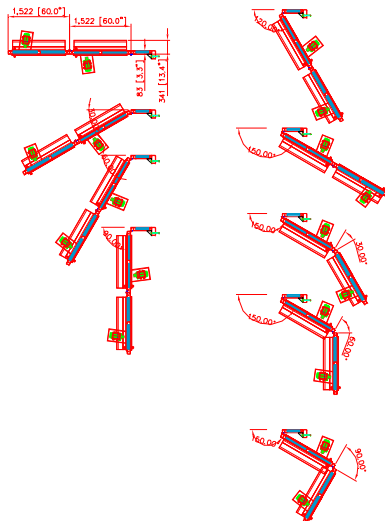
Revisions			
Rev	Description	Date	Approved



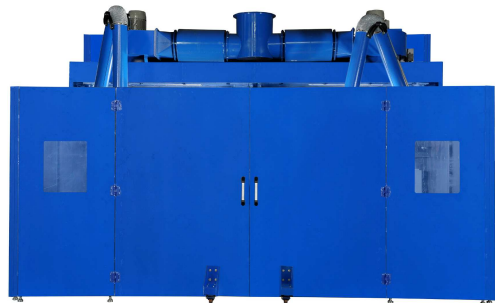
top view



front view



door operation



AVANI ENVIRONMENTAL INTL. INC. Sales Department  
 95 Cypress Drive  
 Youngsville, NC 27596  
 (919) 570-2862  
 info@avanienvironmental.com

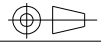
Date	Name	Part Number:
2011-06-09	***	***
Drawn by:	Checked by:	

The drawings, AutoCAD, 3-D Models, and specifications are the property of Avani Environmental Intl. Inc. (AE) and may not be reproduced, distributed, modified, or otherwise used, except provided herein, without the express written permission of AE.

Title: <b>IOC Welding Booth</b>		
Size <b>J</b>	Scale 1 = 1	Drawing Number: ***

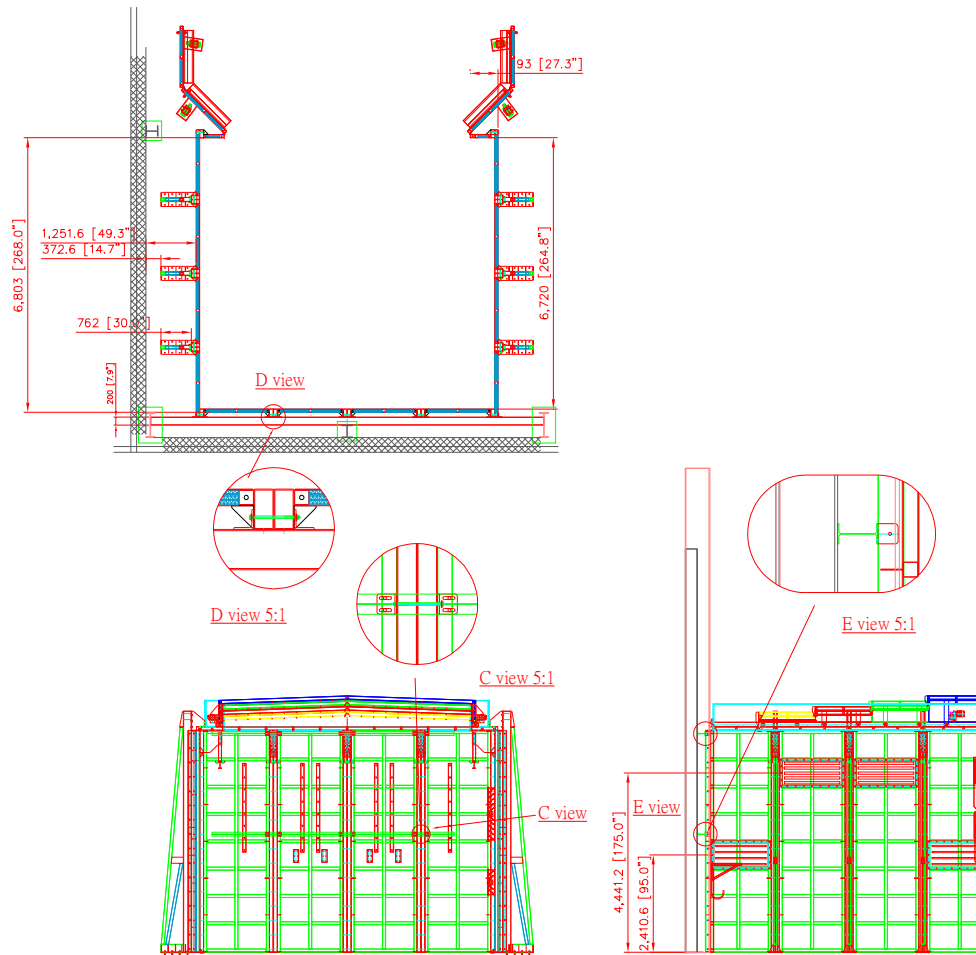
DO NOT SCALE

IF IN DOUBT ASK



Revisions

Rev	Description	Date	Approved
-----	-------------	------	----------



AVANI ENVIRONMENTAL INTL. INC. Sales Department  
 95 Cypress Drive  
 Youngsville, NC 27596

(919) 570-2862  
 info@avanienvironmental.com

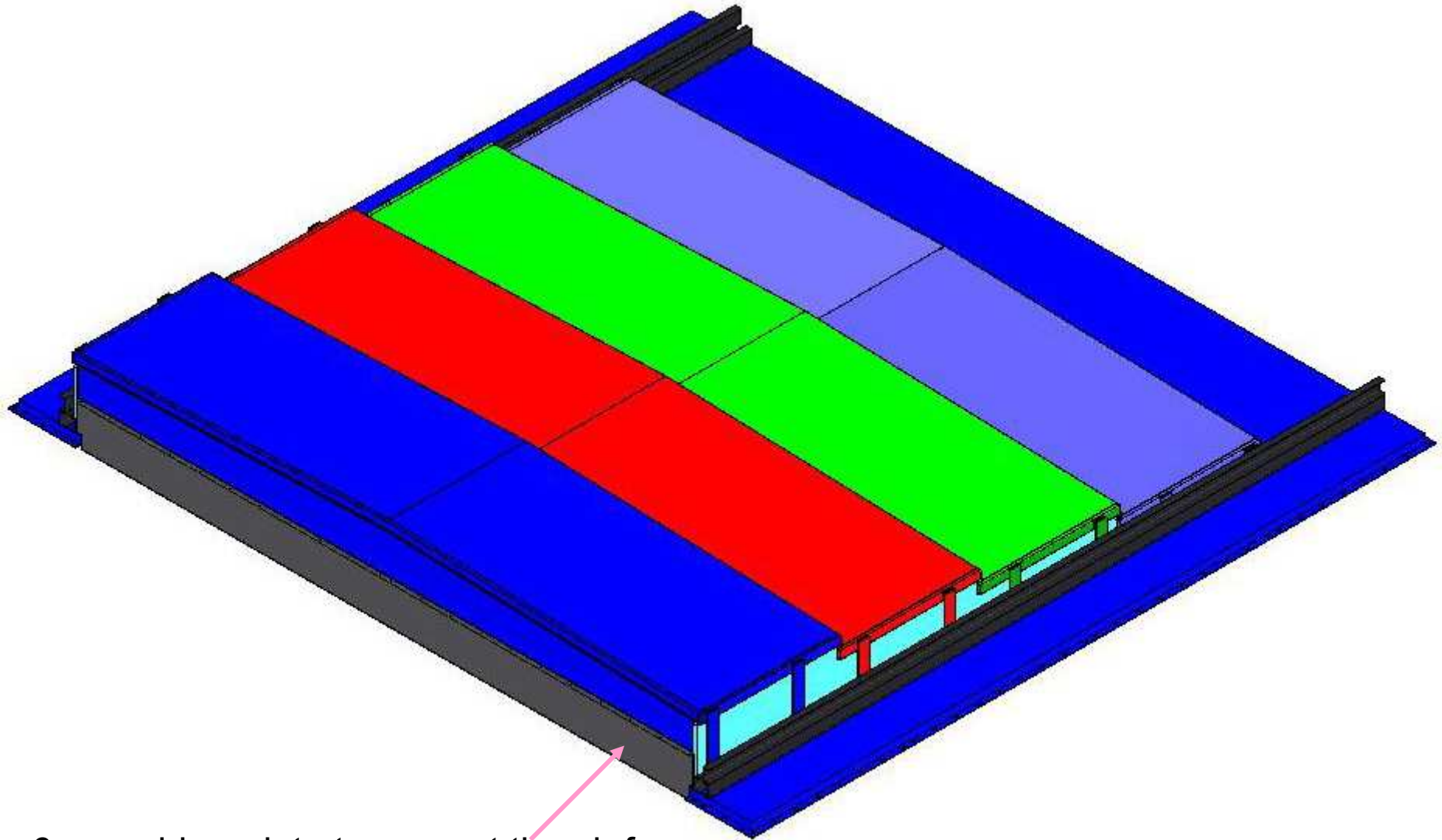
Date	Name	Part Number:
2011-06-09	***	***
Drawn by:		
Checked by:		

The drawings, AutoCAD, 3-D Models, and specifications are the property of Avani Environmental Intl. Inc. (AE) and may not be reproduced, distributed, modified, or otherwise used, except provided herein, without the express written permission of AE.

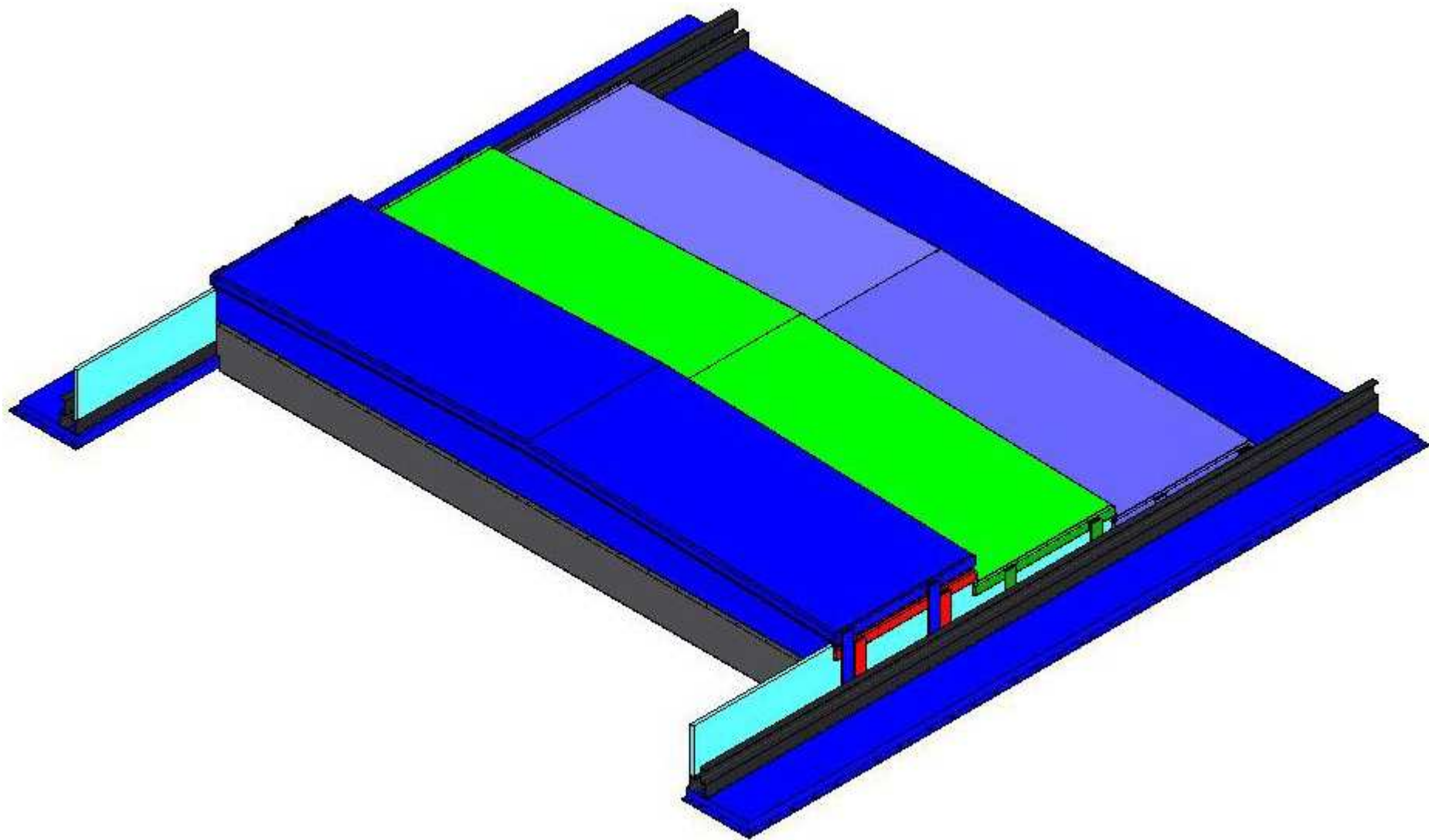
Title: **IOC Welding Booth**

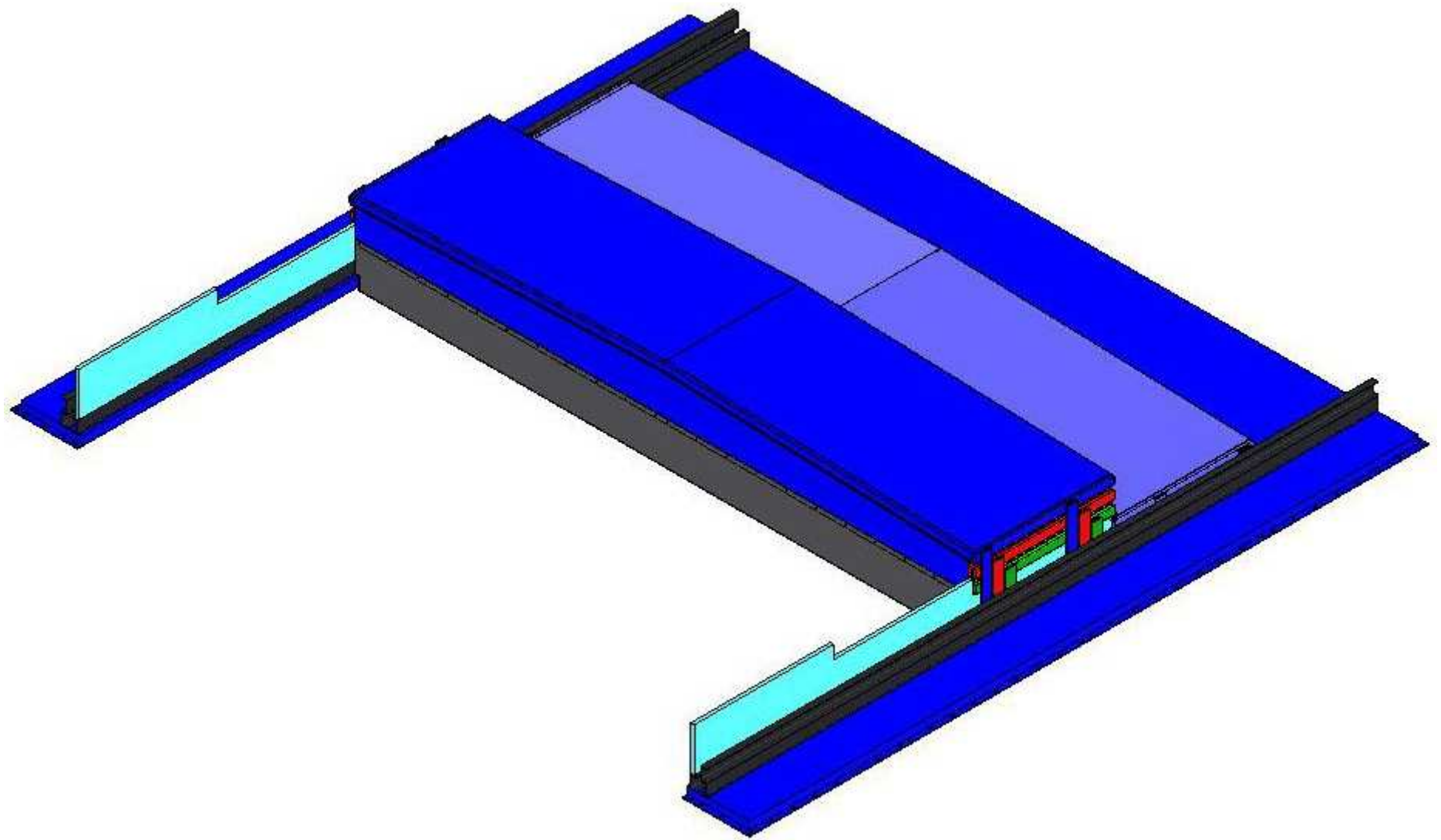
Size <b>J</b>	Scale 1 = 1	Drawing Number: ***
------------------	----------------	------------------------

retractable top: motor driven

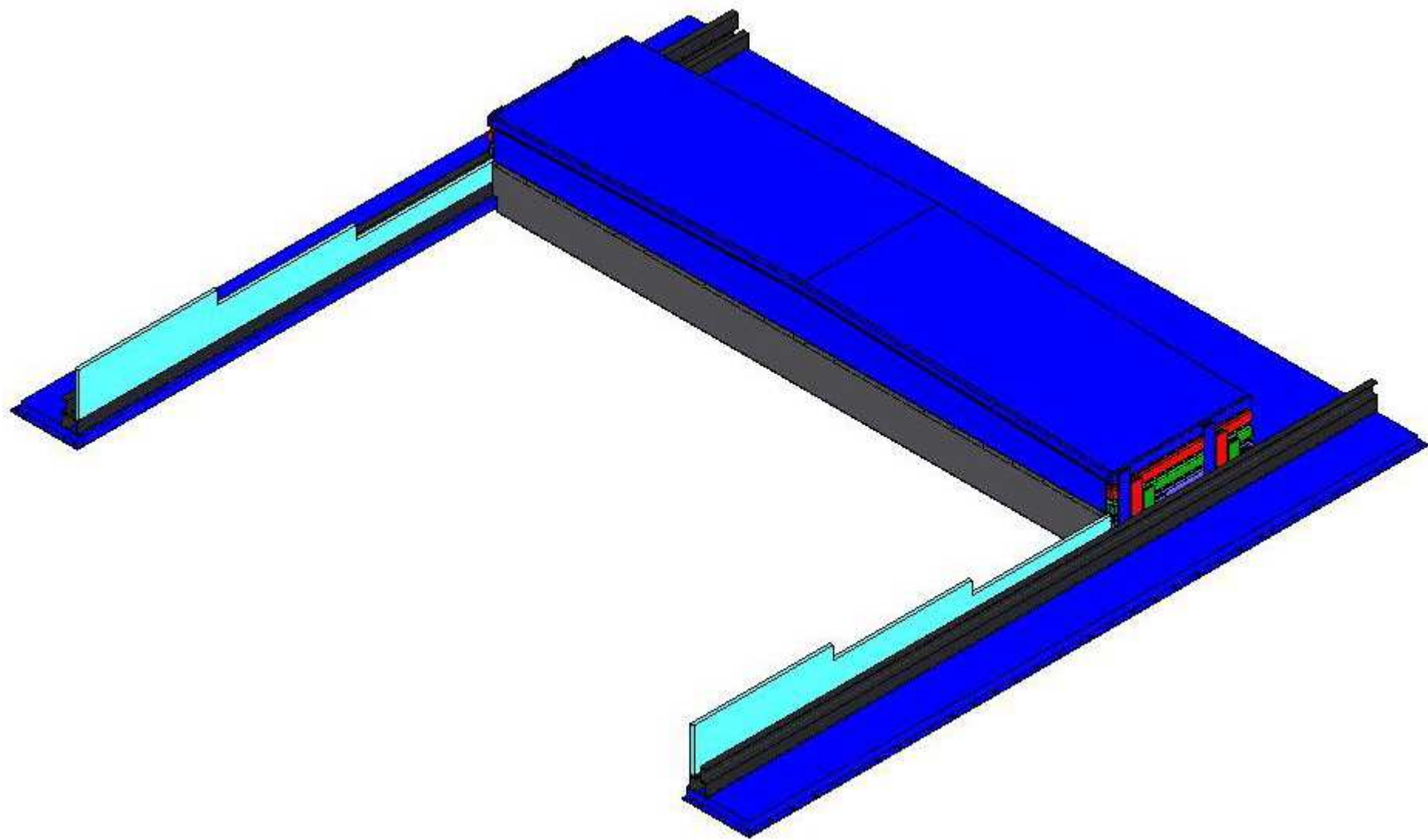


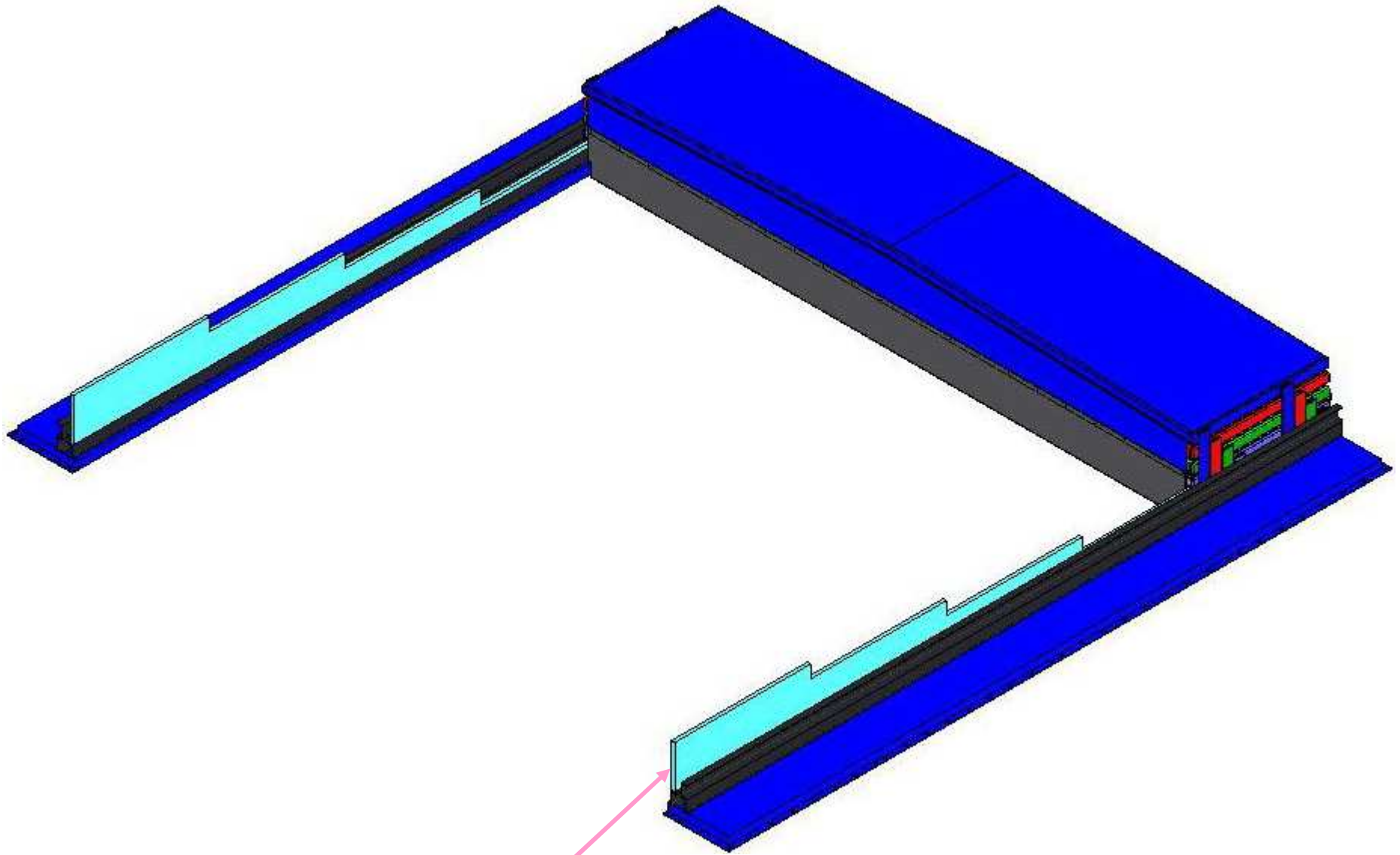
6mm rubber plate to prevent the air from getting into the booth when roof closed











cover to prevent the air from getting into the booth when roof closed