

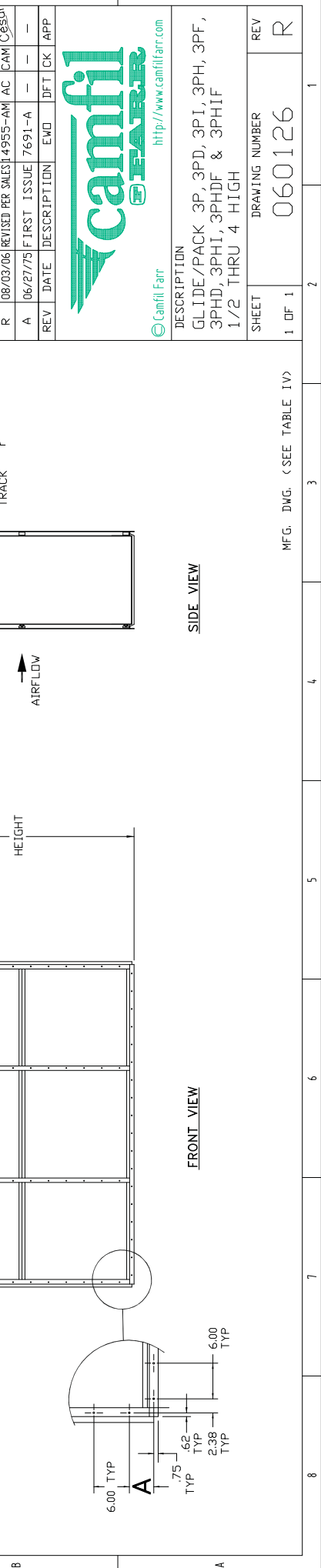
TABLE I - STANDARD UNIT AIRFLOW RATING		AIRFLOW CAPACITIES (CFM), AT 500 FPM										
NO. OF FILTERS	1/2	1	1-1/2	2	2-1/2	3	3-1/2	4	4-1/2	5	5-1/2	6
WIDTH INCHES	12.00	24.00	36.00	48.00	60.00	72.00	84.00	96.00	108.00	120.00	132.00	144.00
HEIGHT INCHES	15.25	1.000	2.000	3.000	4.000	5.000	6.000	7.000	8.000	9.000	10.000	11.000
NO. OF FILTERS HIGH	1	2	3	4	5	6	7	8	9	10	11	12
1-1/2	27.25	1.000	2.000	3.000	4.000	5.000	6.000	7.000	8.000	9.000	10.000	11.000
2	39.50	3.000	6.000	9.000	12.000	15.000	18.000	21.000	24.000	27.000	30.000	33.000
2-1/2	51.50	4.000	8.000	12.000	16.000	20.000	24.000	28.000	32.000	36.000	40.000	44.000
3	63.75	5.000	10.000	15.000	20.000	25.000	30.000	35.000	40.000	45.000	50.000	55.000
3-1/2	88.00	7.000	14.000	21.000	28.000	35.000	42.000	50.000	58.000	66.000	74.000	82.000
4	100.00	8.000	16.000	24.000	32.000	40.000	48.000	56.000	64.000	72.000	80.000	88.000

TABLE II FILTER OPTIONS		TABLE III G/P HOUSING OPTIONS	
TYPE	DEPTH	OPTION	DESCRIPTION
HI-FLO	15	3P	STANDARD
	22	3PD	INSULATED DOORS
	30	3PI	FULLY INSULATED
	32	3PH	HIGH PRESSURE (<math>\pm 7\%</math> W.G.)
	36	3PHF	LESS HOLDING FRAMES
HP	21.00	3PHI	HIGH PRESSURE, FULLY INSULATED DOORS
30/30 (<math>4 \times 4</math>)	3.75	3PHDF	HIGH PRESSURE, FULLY INSULATED DOORS, LESS HOLDING FRAMES
ULTRASOLV	3.75	3PHIF	HIGH PRESSURE, FULLY INSULATED, LESS HOLDING FRAMES
RIGA-FLO (<math>6 \times 6</math>)	5.88		
RIGA-FLO (<math>12 \times 12</math>)	11.50		
AEROPAC (<math>6 \times 6</math>)	5.88		
AEROPAC (<math>12 \times 12</math>)	11.50		
DURAFIL	11.50		
RIGACARB	11.50		
RIGA-RP	12.31		

TABLE IV MANUFACTURING DRAWINGS	
3P	060125 3PH 064244
3PD	073912 3PHD 074376
3PI	075938 3PHI 077835

**PERFORMANCE NOTES:**

- STANDARD HOUSING OPERATING PRESSURE TO  $\pm 3\%$  W.G. WITH LESS THAN 0.5% LEAKAGE INTO HOUSING FRAME. LEAKAGE AROUND FILTER LESS THAN 1% AT 3" W.G. DIFFERENTIAL AT 2,000 CFM FOR 1X1 UNIT.
- OPERATING TEMPERATURE 250°F CONTINUOUS. MEETS NFPA 90A AND TESTED PER ASTM-E84.
- INSULATION ON INSULATED UNITS IS 1" THICK AND IS RATED AT 0.25-0.30 'K' FACTOR.
- RECOMMENDED PRESSURE GAUGE ACCURACY TO BE  $\pm 3\%$  FROM 0.0-6.0 W.G.



**GENERAL NOTES:**

- UNIT IS COMPLETELY FACTORY ASSEMBLED FOR CAPACITY REFER TO TABLE I. FOR APPLICATION REFER TO SALES BULLETIN 2401-(LATEST REV.)
- STANDARD MATERIAL OF CONSTRUCTION: 16GA GALVANIZED STEEL HOUSING, EXTRUDED ALUMINUM TRACKS WITH FIN-SEAL (SEE DWG. 116158) PREFILTER CHANNEL, NEPRENE DOOR GASKET, PHENOLIC KNOB FOR POSITIVE DOOR SEALING, 18GA GALVANIZED STEEL HOLDING FRAMES AND APPROPRIATE FILTER FASTENERS. PRESSURE TAP IS INSTALLED BETWEEN PREFILTER AND FINAL FILTER. (SEE DWG. 094805).
- THE HOLDING FRAME IS INTEGRAL PART OF THE RIGA-RP HOUSING, NO FASTENERS REQUIRED.
- DURAFIL AND RIGA-CARB REQUIRE C-70 FASTENERS WHEN INSTALLED IN HOLDING FRAME.
- HOUSING OPTIONS: (SPECIAL PRICING AND PART NUMBERS REQUIRED).
  - 16GA 304 OR 316 STAINLESS STEEL HOUSING AND EXTRUDED ALUMINUM TRACKS.
  - PRIMED ONLY (OR PRIMED AND PAINTED) INSIDE, OUTSIDE OR BOTH.
  - FIVE (5) FILTERS HIGH MAXIMUM AS ONE PIECE CONSTRUCTION.
  - OTHER SPECIAL OPTIONS REQUIRE CAMFIL FARR ENGINEERING CONSULTATION.
  - SEE TABLE II FOR FILTER OPTIONS. FILTERS ARE NOT INCLUDED WITH HOUSING, ORDER SEPARATELY.
  - 'B' DIMENSION (EXTENSION PAST HOUSING) IS BASED ON FILTERS IN HOLDING FRAME. IF FILTER HEADER IS INSTALLED DIRECTLY IN THE ALUMINUM EXTRUSION TRACK CHANNEL (FRAMELESS UNIT) THEN 'B' DIMENSION WILL BE APPROXIMATELY 1.25" LESS.
- ORDERING INFORMATION: SPECIFY MODEL, SIZE AND TYPE OF FINAL FILTER FOR WHICH HARDWARE AND/OR FASTENERS SHOULD BE FURNISHED. EXAMPLE: GLIDE/PACK 3PHI RIGA-FLO 12 BDX STYLE 2X4.5 (G/P 3PHI RF12 2X4.5)
  - FILTERS HIGH X WIDE
  - FINAL FILTER
  - OPTION HIGH PRESSURE INSULATED
  - GLIDE/PACK

REV	DATE	DESCRIPTION	BY	CHK	APP
R	08/03/06	REVISED PER SALES 14955-AM AC	CAM	C690T	
A	06/27/75	FIRST ISSUE	7691-A		



DESCRIPTION  
GLIDE/PACK 3P, 3PD, 3PI, 3PH, 3PF, 3PHD, 3PHI, 3PHDF & 3PHIF  
1/2 THRU 4 HIGH

SHEET	DRAWING NUMBER	REV
1 OF 1	060126	R

MFG. DWG. (SEE TABLE IV)