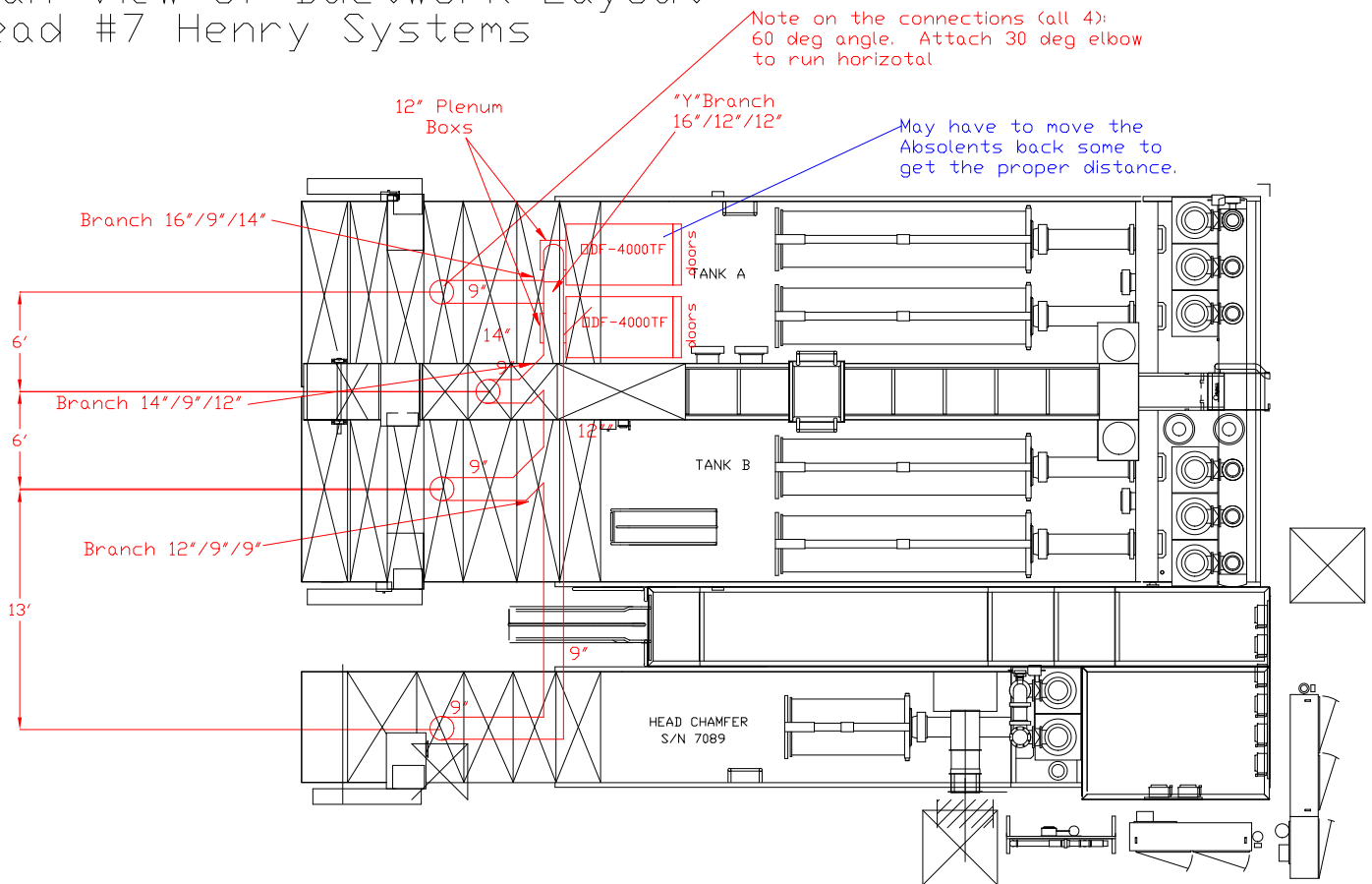


Plan View of Ductwork Layout Head #7 Henry Systems



Note on the connections (all 4):
60 deg angle. Attach 30 deg elbow
to run horizontal

May have to move the
Absolents back some to
get the proper distance.

- Notes:
- A) Each drop will have a Butterfly damper for airflow adjustment.
 - B) Each drop will have a Bleed in valve to allow for balancing.
 - C) Each DDF-4000TF (2) has 5HP 460volt 3Phase motor. Full load amps are 8.33amps.
 - D) Drain line: P-Trap made of 3/4 Galvanized with ball valve and unions. IAQ to provide. Honda to provide piping to sump.

Industrial Air Quality		IAQ
95 Cypress Drive Youngsville, NC 27596		
P# 919-562-7181	F# 919-562-7182	
Project: Honda Canada		
Drawing: Head#7 Henry Systems		
Date: 03/29/08	Drawn by: W/WB	
Sheet No:		