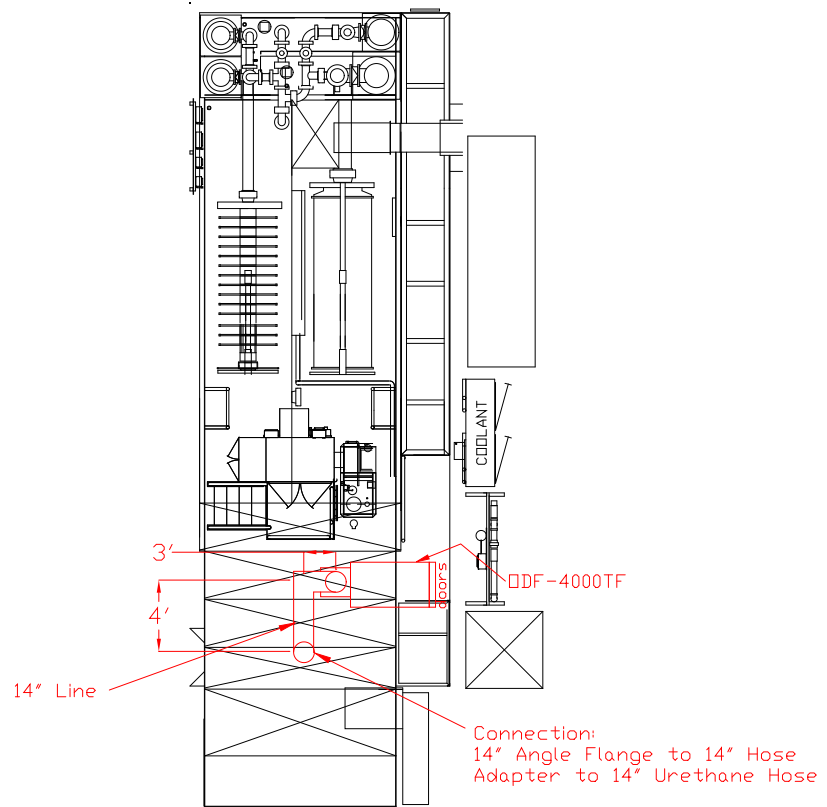


Plan View of Ductwork Layout  
Block Line #6 - Coolant System #3



Notes:

- A) Each drop will have a Butterfly damper for airflow adjustment.
- B) Each drop will have a Bleed in valve to allow for balancing.
- C) ODF 4000TF has 5HP 460volt 3Phase motor. Full load amps are 8.33amps.
- D) Drain line: P-Trap made of 3/4" Galvanized with ball valve and unions. IAQ to provide. Honda to provide piping to sump.

Industrial Air Quality		IAQ
95 CYPRESS DRIVE Youngsville, NC 27596		
P# 919-562-7181 F# 919-562-7182		
Project: Honda Canada		
Drawing: Block#6 Coolant Sys #3		
Date: 03/26/08		Drawn by:
Sheet No:		