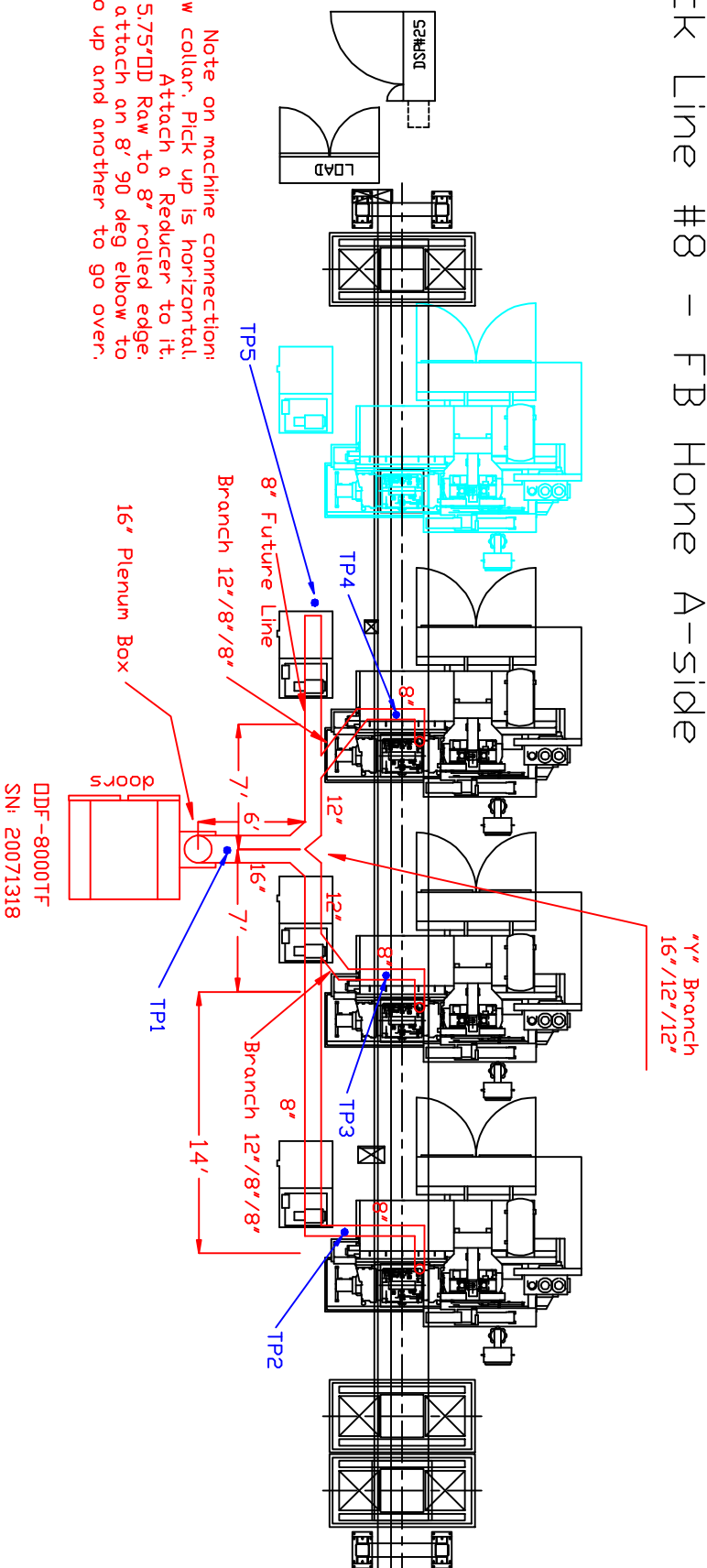


# Plan View of Ductwork Layout

## Balance Drawing

### Block Line #8 - FB Hone A-side



Hang ductwork from cable tray

- Notes:
- A) Each drop will have a Butterfly damper for airflow adjustment.
  - B) Each drop will have a Bleed in valve to allow for balancing.
  - C) DDF-8000TF has a 10HP 460volt 3Phase motor. Full load amps are 14amps.
  - D) Drain line: By Honda.