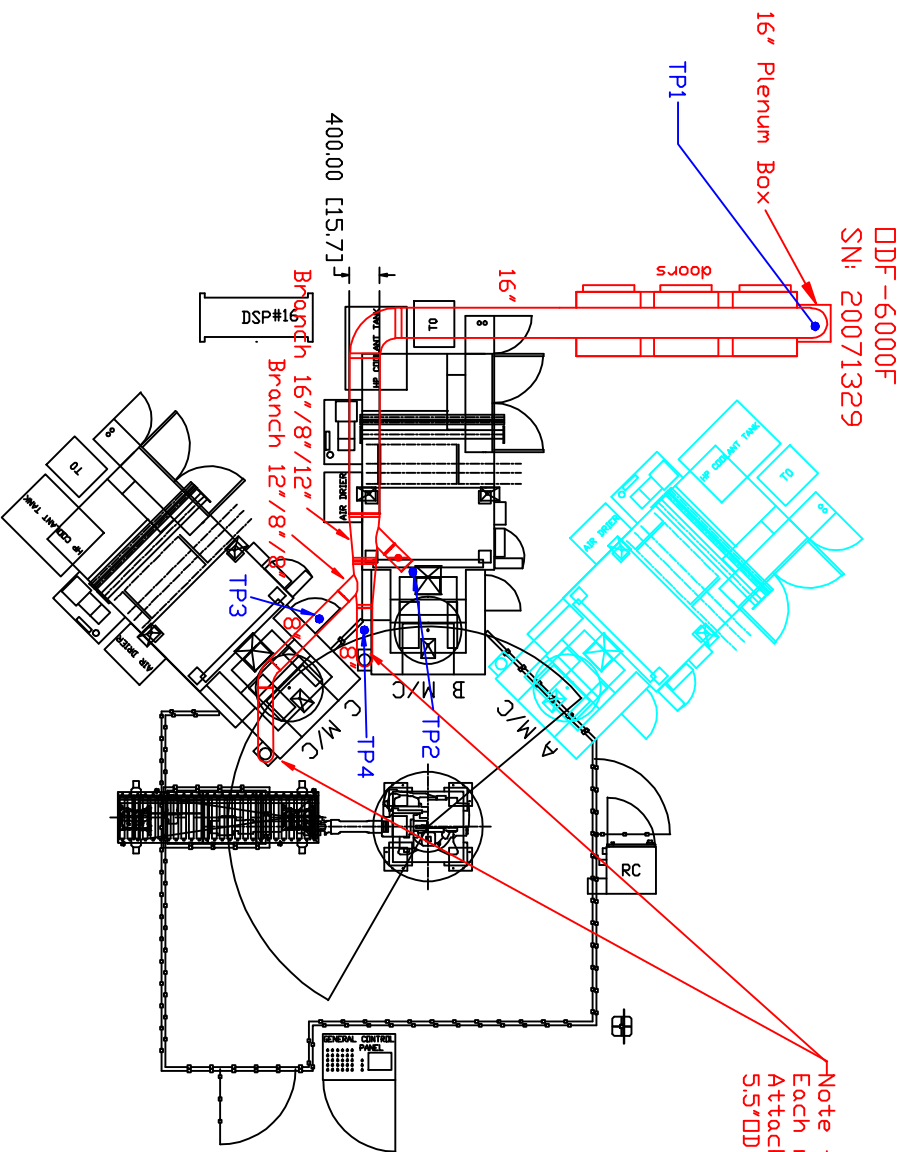


Plan View of Ductwork Layout Balance Drawing Block Line - #1 - CNC Cell #1



DDF--6000F
SN: 20071329

Note for each machine connection:
Each machine has a 5.75" ID Raw collar.
Attach a Reducer to it
5.5"ID Raw to 8" rolled edge

- Notes:
- A) Each drop will have a Butterfly damper for air-flow adjustment.
 - B) Each drop will have a Bleed in valve to allow for balancing.
 - C) DDF 6000F has 3 - 3.5HP 460volt 3Phase motors. Full load amps are 4.6amps each.
 - D) Drain line: By Honda.

Industrial Air Quality
95 Cypress Drive 27596
Youngsville, NC F# 919-562-7182

Project: Honda Canada-Balance
Drawing: Block #1 CNC Cell #1
Date: 09/10/08 Drawn by: WVB

Sheet No: 1 of 12 Rev.: 0

