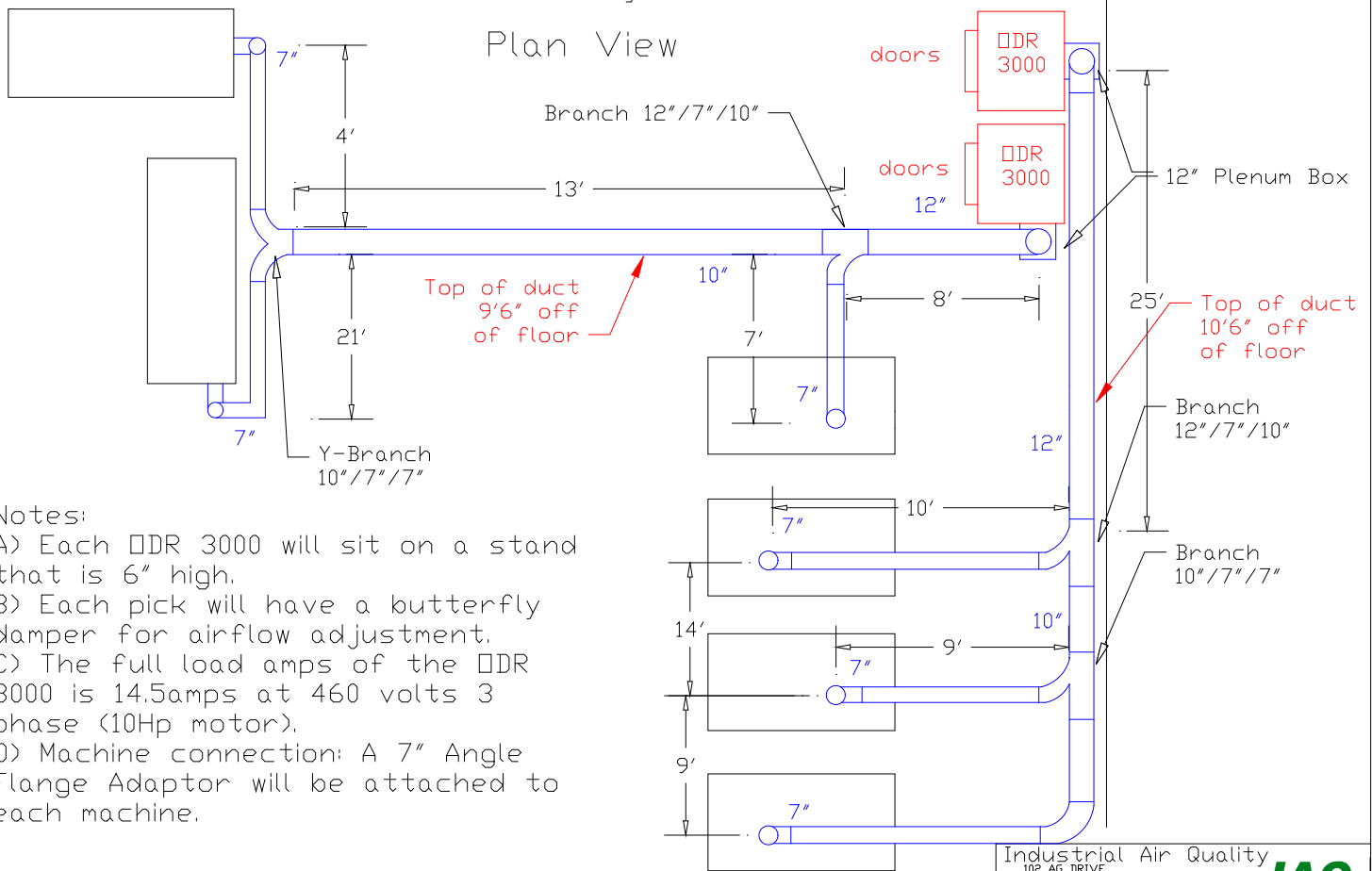


Ductwork Layout for CNC's

Plan View



Notes:

- A) Each DDR 3000 will sit on a stand that is 6" high.
- B) Each pick will have a butterfly damper for airflow adjustment.
- C) The full load amps of the DDR 3000 is 14.5amps at 460 volts 3 phase (10Hp motor).
- D) Machine connection: A 7" Angle Flange Adaptor will be attached to each machine.

Industrial Air Quality	IAQ
102 AG DRIVE Youngsville, NC 27596 P# 919-562-7181 F# 919-562-7182	
Project: Hoerbiger	
Drawing: Ductwork layout	
Date: 12/18/08 Drawn by: RAV	
Sheet No:	