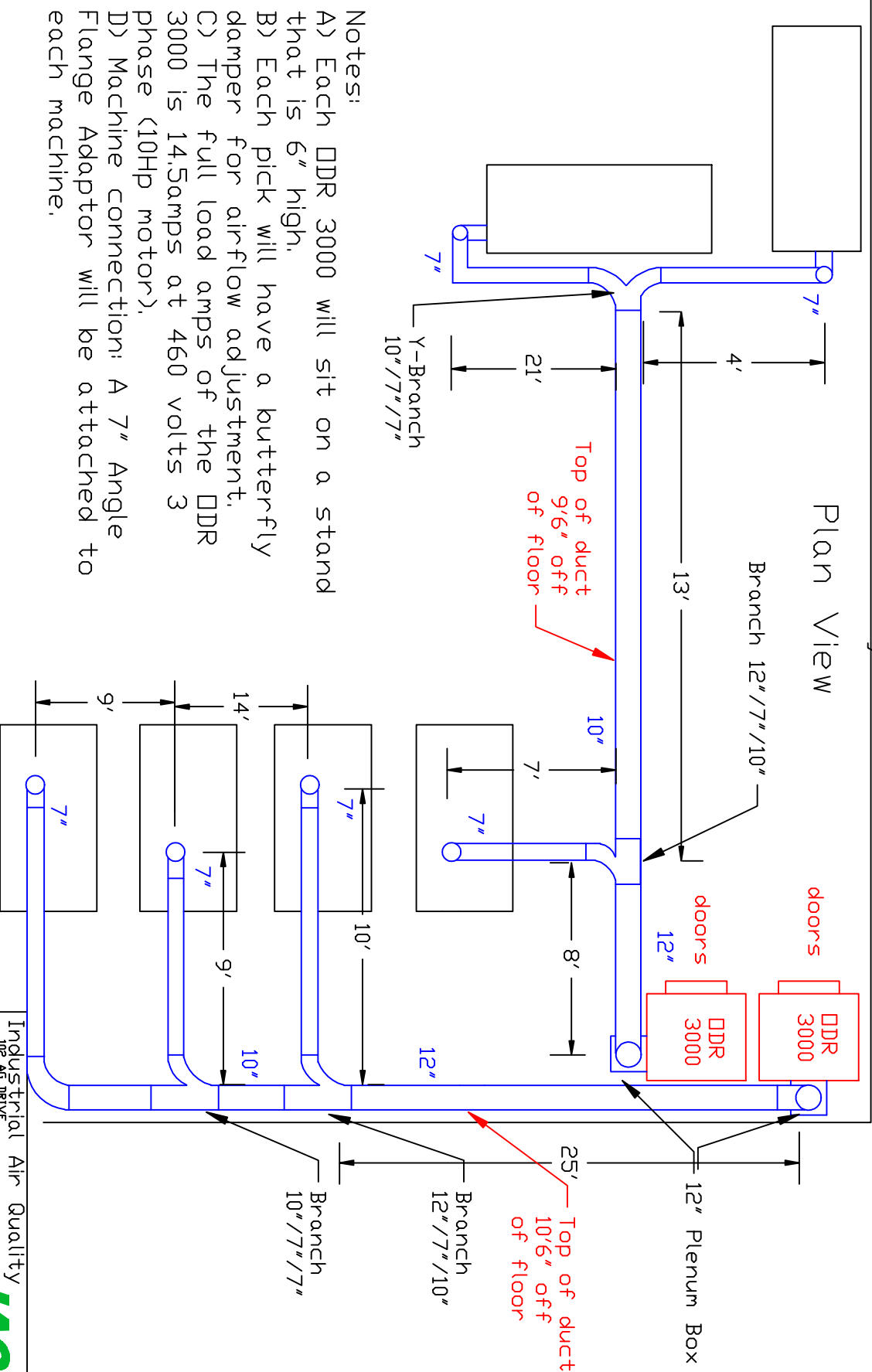


Ductwork Layout for CNC'S



- Notes:
- A) Each DDR 3000 will sit on a stand that is 6" high.
 - B) Each pick will have a butterfly damper for air-flow adjustment.
 - C) The full load amps of the DDR 3000 is 14.5amps at 460 volts 3 phase (10HP motor).
 - D) Machine connection: A 7" Angle Flange Adaptor will be attached to each machine.

Industrial Air Quality	
102 AG DRIVE Toungesville, NC 27596	
PH 919-562-7181 F# 919-562-7182	
Project: Hoerbiger	
Drawing: Ductwork layout	
Date: 12/18/08 Drawn by: RAV	
Sheet No:	