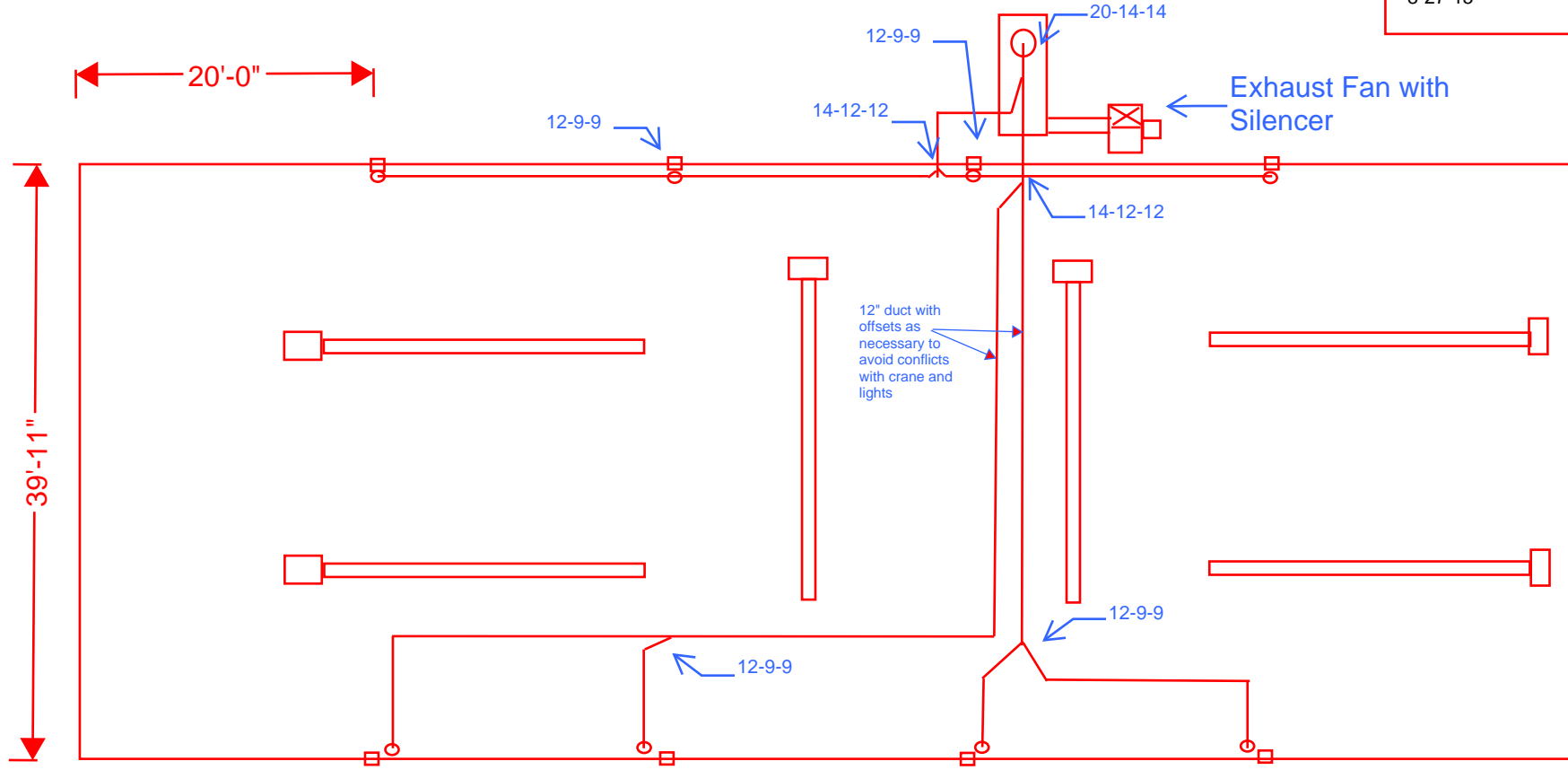


Haskel Ducting Layout  
Evergreen HVAC  
Chris Schlentz  
8-27-15



20'-0"

39'-11"

8" x 14' Arm - Double  
Pivot 15' Boom  
(Typical of (8) - up to  
6 at a time)

12" duct with  
offsets as  
necessary to  
avoid conflicts  
with crane and  
lights

Exhaust Fan with  
Silencer

Avani  
16 Cartridge Dust Collector w / 4,064 FT<sup>2</sup>  
BI Fan rated to deliver 8,128 CFM @ 12-15" TSP  
(Maximize BHP to optimize fan selection)

Boss Products  
EcoBoss Controls (Same as matrix scope for 8 stations)