

DO NOT SCALE

IF IN DOUBT ASK

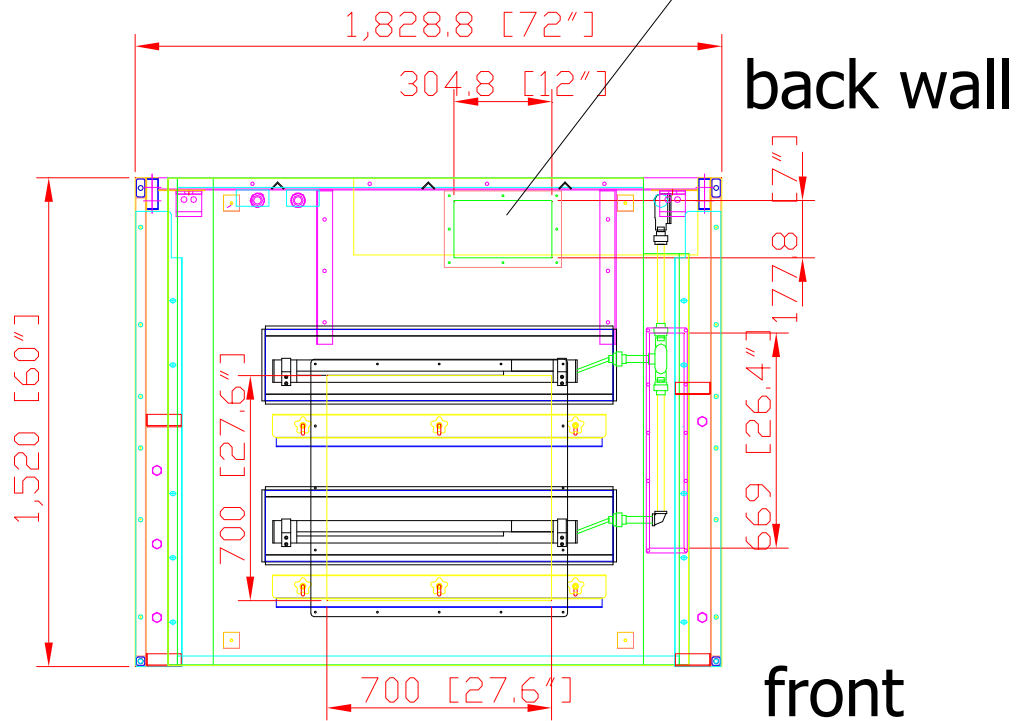


Revisions

Rev	Description	Date	Approved

plan view

I. booth outlet: 7" x 12"



OSKAR ENVIRONMETAL, INC. Sales Department
 95 Cypress Drive (919) 570-2862
 Youngsville, NC 27596 sales@oskarsales.com

Drawn by:	Date	Name	Part Number:
Checked by:	2010-06-15	XXXXX	XXXXXX

This drawing is confidential and is the exclusive property of Oskar Environmental. No unauthorized use/copy or disclosure is to be made and it is returned whenever required.

Title:	WB-6x5P (Hartnell) -01
--------	------------------------

Size	Scale	Drawing Number:
B	1 = 20	WB-6x5P-01



Revisions			
Rev	Description	Date	Approved

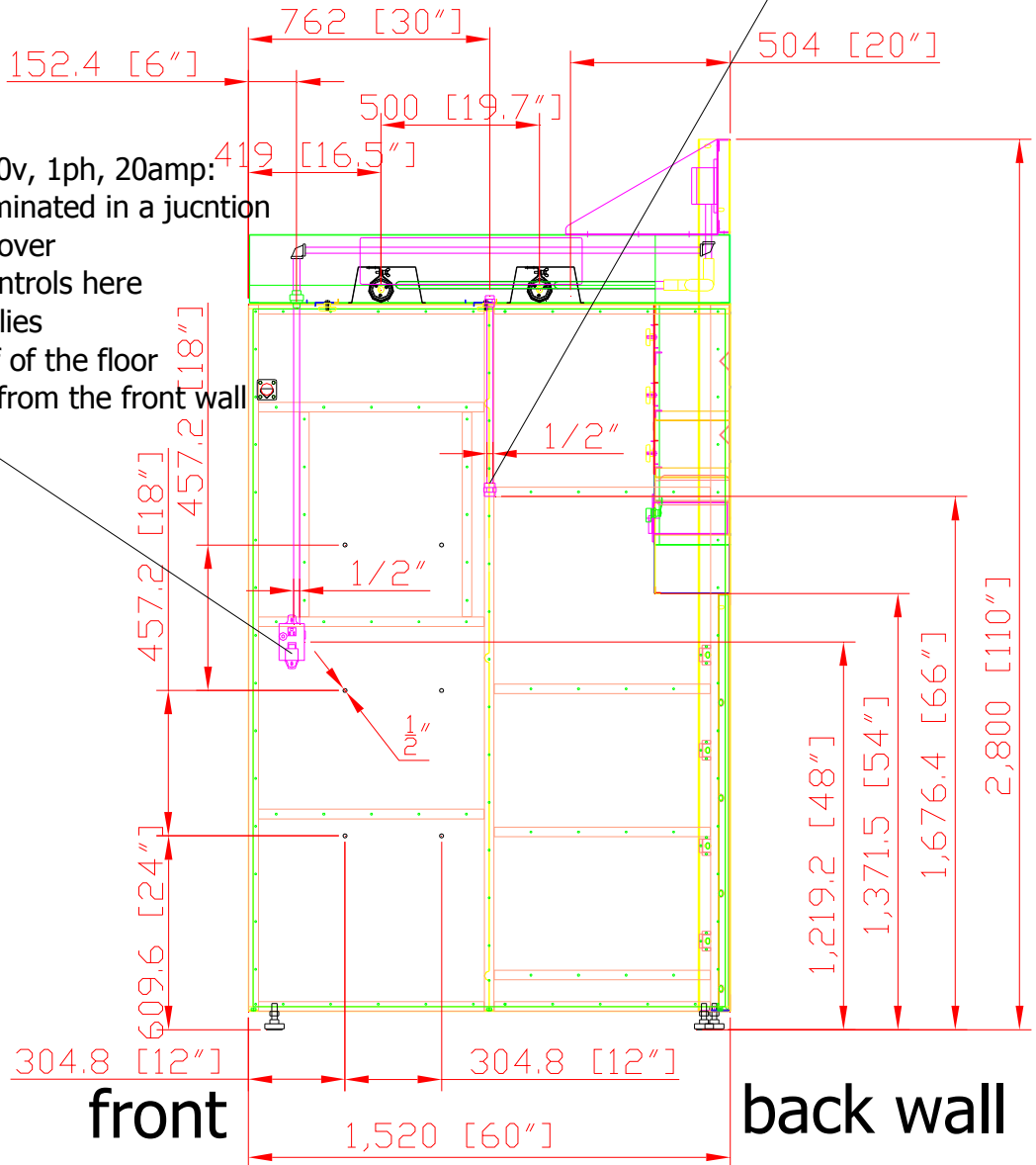
side view of right wall from outside

F. air line:

- terminated on top with a 1/2" female thread conduit on top and inside the booth.
- No Junction boxes.
- location: 66" off of the floor and 30" off of the front wall

E. light switch 110v, 1ph, 20amp:

- duplex plug terminated in a junction box on top with cover
- working light controls here
- SmartVent supplies
- location: 48" off of the floor and 6" from the front wall



OSKAR ENVIRONMENTAL, INC. Sales Department 95 Cypress Drive Youngsville, NC 27596 (919) 570-2862 sales@oskarsales.com	Drawn by:	Date	Name	Part Number:	Title:		
	Checked by:	2010-06-15	XXXXX	XXXXXX	WB-6x5P (Hartnell) -02		
This drawing is confidential and is the exclusive property of Oskar Environmental. No unauthorized use/copy or disclosure is to be made and it is returned whenever required.					Size	Scale	Drawing Number:
					B	1 = 20	WB-6x5P-02



front view

G.

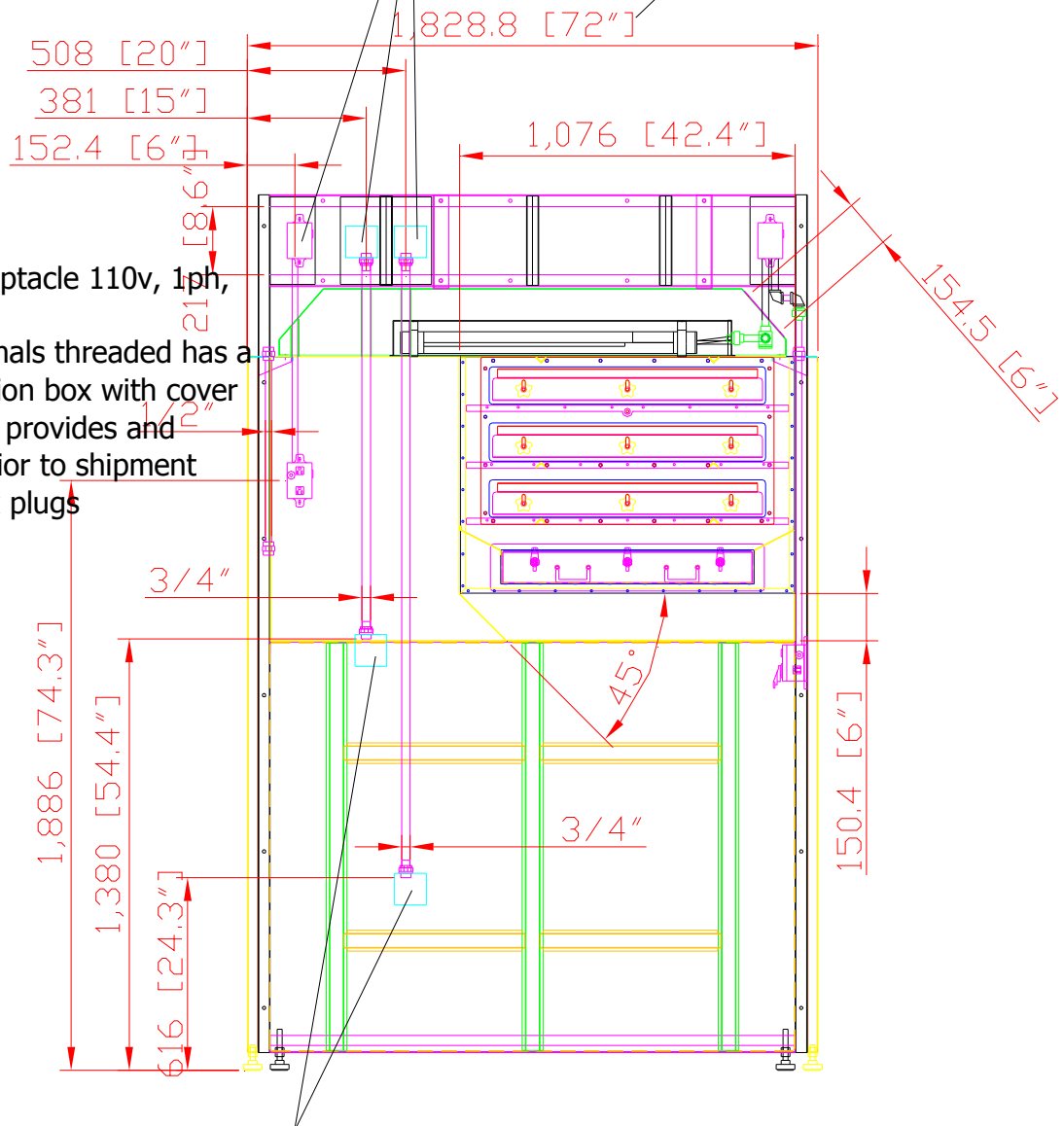
- light switch with junction box
- amp services w 3/4" terminals, incl. junction box with cover. Oskar to source junction boxes locally.

A. booth width: 6' OD

- D.** plug receptacle 110v, 1ph, 25amp:
- 1/2" terminals threaded has a plastic junction box with cover
 - SmartVent provides and pre-wires prior to shipment
 - has duplex plugs

C.

- 3/4" conduits run for (2) amp services on top and inside the booth.
- junction boxes on top: with cover; junction boxes inside booth: no cover. Oskar to source junction boxes locally.
- Oskar to source amp services locally.



OSKAR ENVIRONMENTAL, INC. Sales Department
95 Cypress Drive
Youngsville, NC 27596
(919) 570-2862
sales@oskarsales.com

Drawn by:	Date	Name	Part Number:
XXXXXX	2010-06-15	XXXXXX	XXXXXX
Checked by:			

This drawing is confidential and is the exclusive property of Oskar Environmental. No unauthorized use/copy or disclosure is to be made and it is returned whenever required.

Title:	Size	Scale	Drawing Number:
WB-6x5P (Hartnell) -03	B	1 = 20	WB-6x5P-03

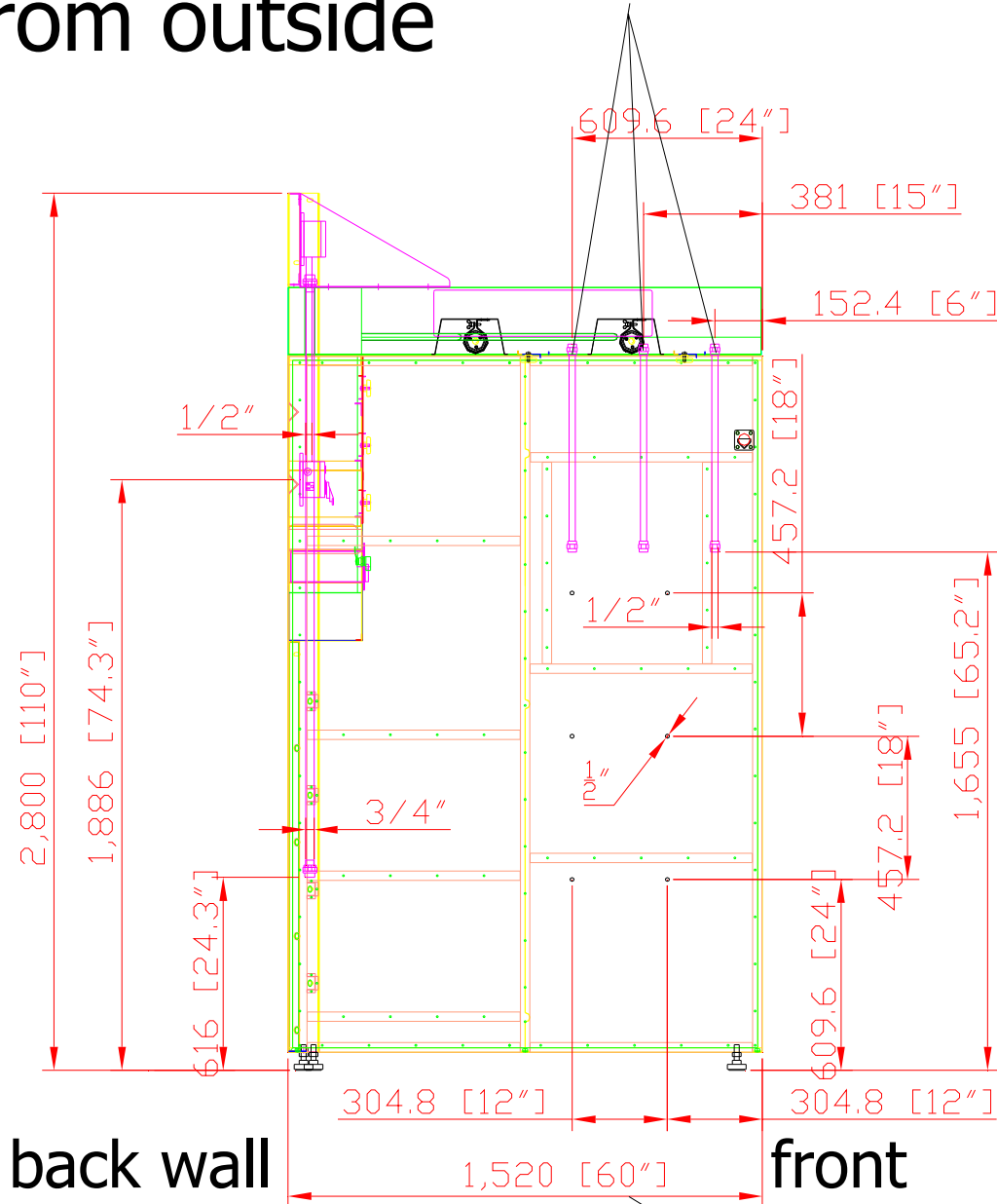


Rev	Description	Date	Approved

side view of left wall from outside

H. (3) gas lines:

- terminated with 1/2" female thread conduits on top and inside the booth.
- No junction boxes.



B. booth deep: 5' OD

OSKAR ENVIRONMENTAL, INC. Sales Department
95 Cypress Drive
Youngsville, NC 27596
(919) 570-2862
sales@oskarsales.com

Drawn by:	Date:	Name:	Part Number:
Checked by:	2010-06-14	XXXXX	XXXXXX

Title: WB-6x5P (Hartnell) -04

This drawing is confidential and is the exclusive property of Oskar Environmental. No unauthorized use/copy or disclosure is to be made and it is returned whenever required.

Size	Scale	Drawing Number:
A	1 = 20	WB-6x5P-04