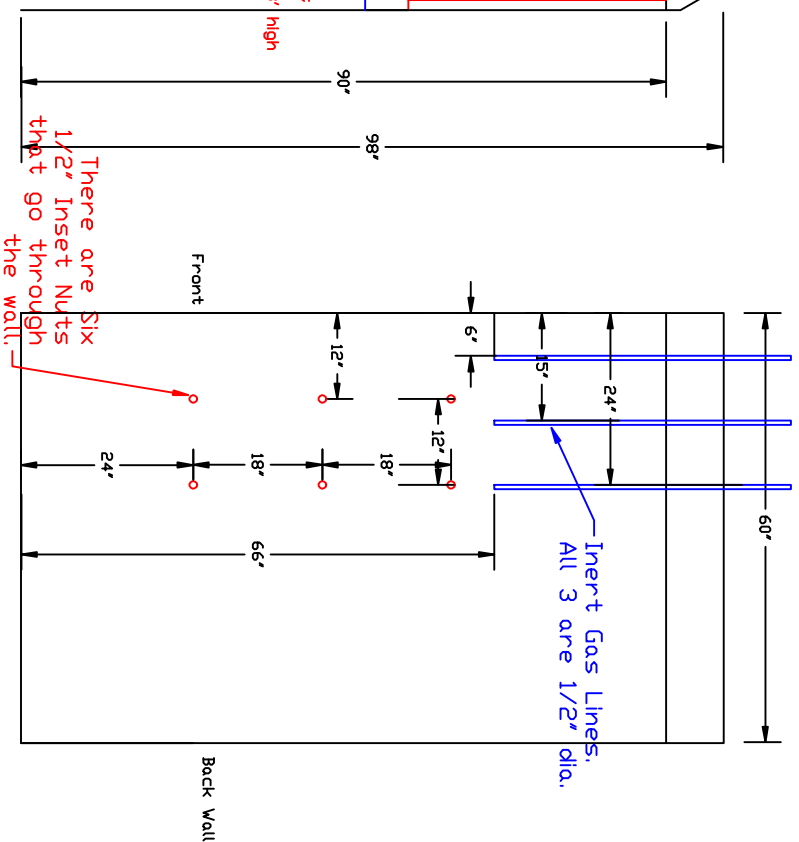
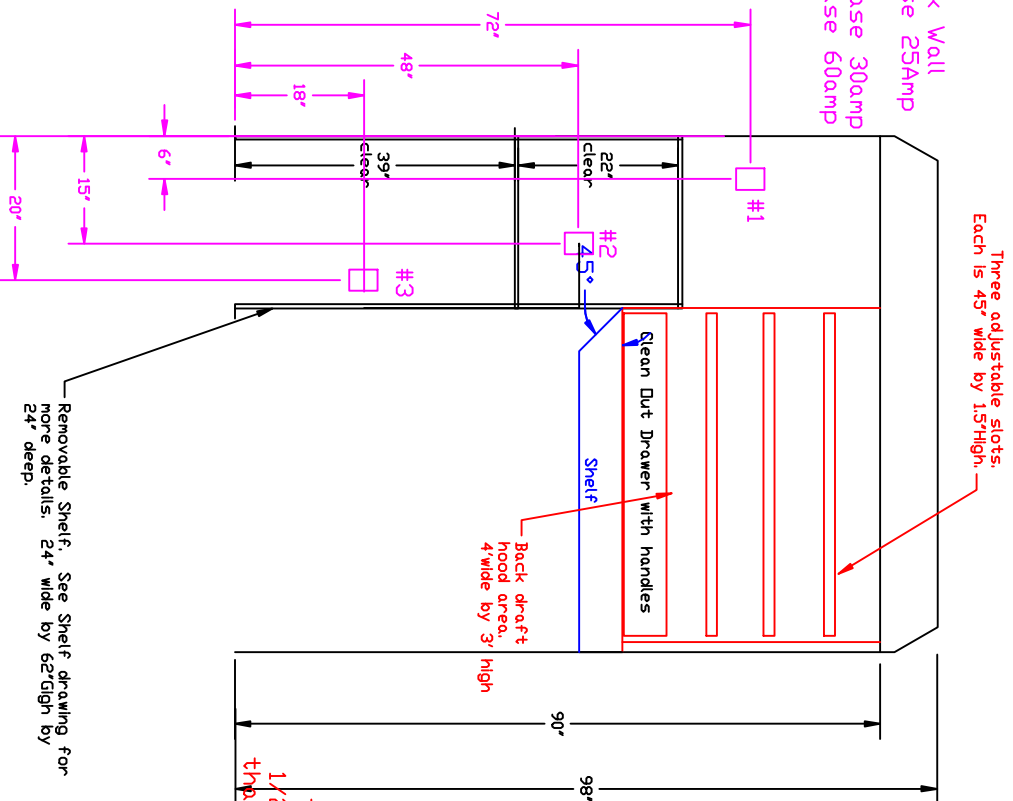


Hartnell Custom Booth / Dimensions - Left wall

Front View

Side View of Left Wall from inside

- Electrical on Back Wall
- #1 - 110volt 1phase 25Amp Duplex Plug
- #2 - 480volt 3phase 30amp
- #3 - 240volt 1phase 60amp



Removable Shelf. See Shelf drawing for more details. 24" wide by 62" high by 24" deep.

Dixar Environmental Products	
95 Cypress Drive 27596	
Roumaville, NC	
P# 919-570-2862 F# 919-570-2863	
Oskar	
Project: Hartnell - Booth	
Drawing: Left Wall	
Date: 6/4/10	Drawn by: RAV
Sheet No: 3 of 3	