

Hardware Bags for WB-6077G

- ◆ **Hardware Bag 1 : Fasten the left and right side panels to the back panel.**

Description		Q'ty
Half-threaded screw	3/8"*4-1/2"	15
Hex Nut	3/8"	15
Flat Washer	3/8"* OD28*3T	30



Hardware Bags for WB-6077G

- ◆ **Hardware Bag 2 : Fasten the front right side panel (SR1) to the Fixed Louver Roof Set (W1) and the right door (DR1). Secure the front left side panel (SL1) to the left side of the Fixed Louver Roof Set (W1).**

Description		Q'ty
Half-threaded screw	3/8"*4-1/2"	11
Hex Nut	3/8"	11
Flat Washer	3/8"* OD28*3T	22



**front
right side panel**



Hardware Bags for WB-6077G

- ◆ **Hardware Bag 3 : Adjacence of the side panels. (1 side panel is composed of 2 pcs small side panels)**

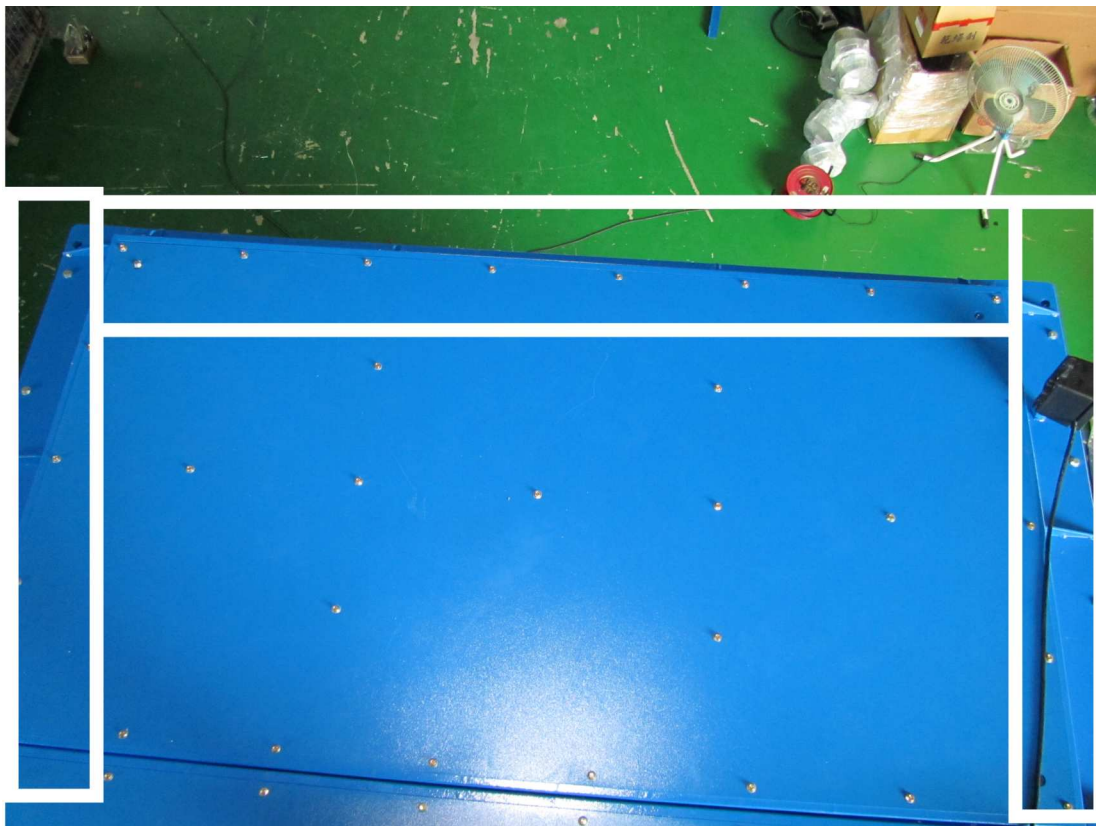
Description		Q'ty
Hex screw	3/8"*3"	14
Hex Nut	3/8"	14
Flat Washer	3/8"* OD28*3T	28
Cap nut	3/8"	14



Hardware Bags for WB-6077G

- ◆ **Hardware Bag 4 : Connect front roof (T1) to front side panels (SL1 and SR1).**

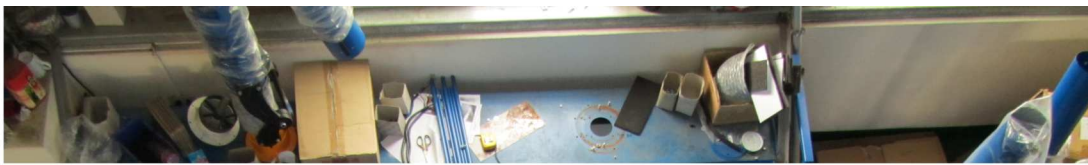
Description		Q'ty
Hex screw	5/16''*3/4''	15
Flat Washer	5/16''* OD23*2T	15



Hardware Bags for WB-6077G

- ◆ **Hardware Bag 5 : Connect back roof (T2) to back side panels (SL2 and SR2) and the upper part of the backdraft module.**

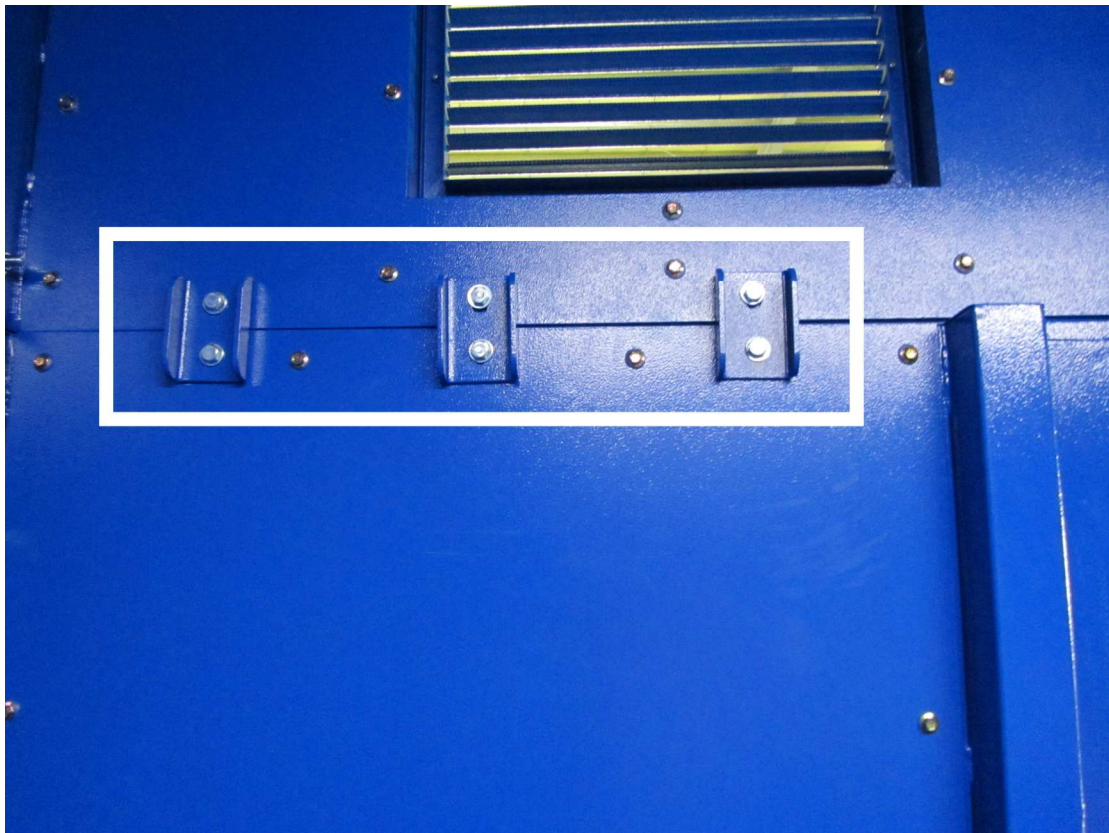
Description		Q'ty
Hex screw	5/16''*3/4''	22
Flat Washer	5/16''* OD23*2T	22



Hardware Bags for WB-6077G

◆ **Hardware Bag 6 : Fixing connections for the right door.**

Description		Q'ty
Hex screw	5/16''*3/4''	6
Flat Washer	5/16''* OD23*2T	6



Hardware Bags for WB-6077G

- ◆ **Hardware Bag 7: Secure the slider rail to the front bottom part of the Fixed Louver Roof Set (W1).**

Description		Q'ty
Hex screw	5/16''*3/4''	11
Flat Washer	5/16''* OD23*2T	11



Hardware Bags for WB-6077G

- ◆ **Hardware Bag 8 : Attaching corner gussets under the open shelf**
(3 pcs for each booth).

Description		Q'ty
Hex screw	3/8"3/4"	24
Flat Washer	3/8"*OD28*3t	24



Hardware Bags for WB-6077G

- ◆ **Hardware Bag 9 : Secure the unit on the ground.**

Description		Q'ty
Sleeve Anchor	3/8"2-1/2"	2



Hardware Bags for WB-6077G

- ◆ **Hardware Bag 10 : Plug up the back part of the left side panel.**

Description		Q'ty
Hole plug	10	3

