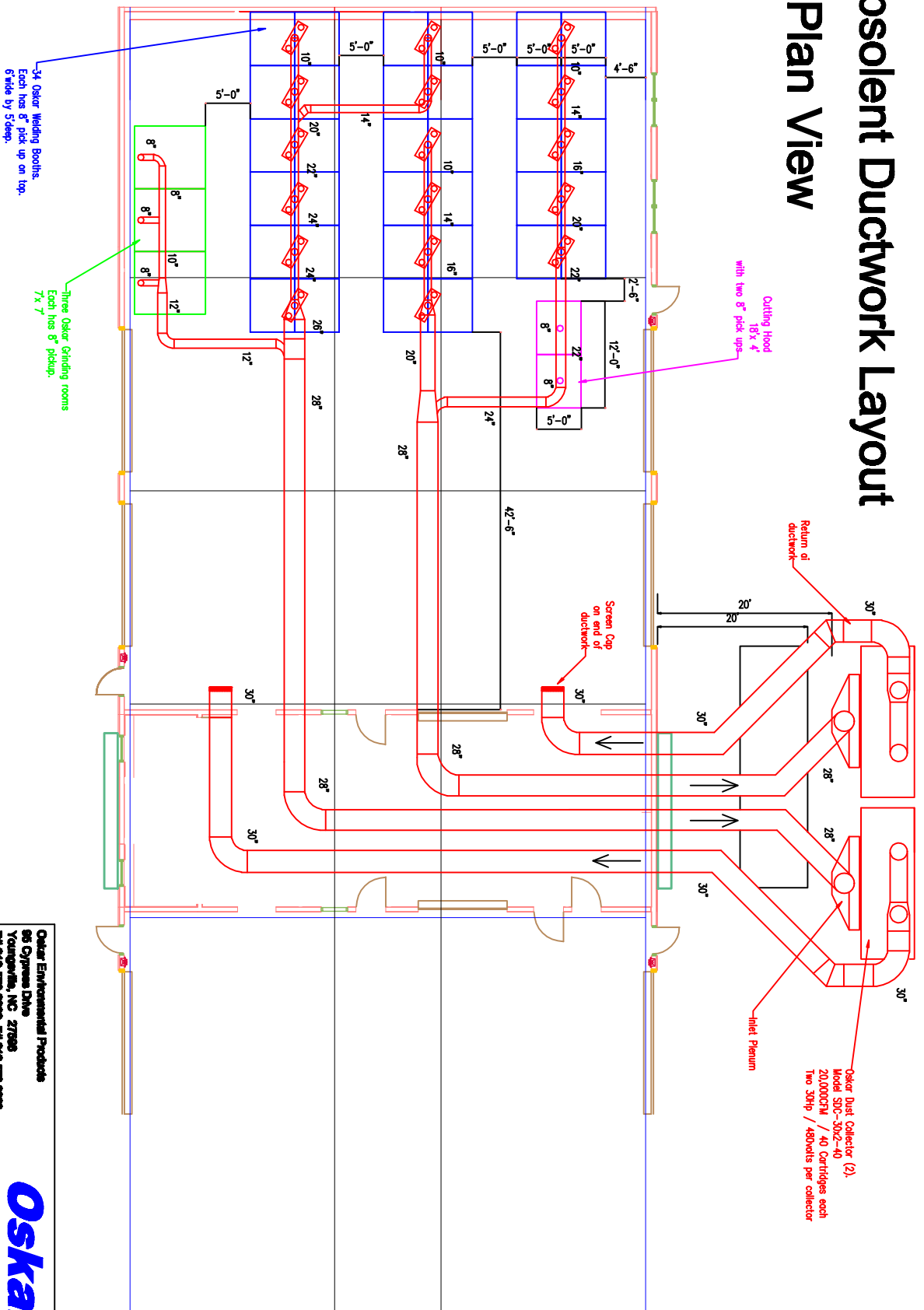


Absolent Ductwork Layout Plan View



34 Oskar Welding Booths.
Each has 8" pickup on top.
6' wide by 5' deep.

Three Oskar Grinding rooms
7x 7'

Cutting Hood
18 x 4
with two 8" pickups

Return of
ductwork

Screen Cap
on end of
ductwork

Inlet Plenum

Oskar Dust Collector (2).
Model SDC-30x2-40
20,000CFM / 40 Cartridges each
Two 30HP / 480volts per collector

Oskar Environmental Products
96 Cypress Drive
Yountville, NC 27788
PH 919-870-2882 FX 919-870-2888



Project: Hartnell College

Drawing: Ductwork Layout

Date: 10/27/10

Drawn by: RAV

Sheet No: