

Static Pressure Calculations

The performance of each fan is rated at 10,000 CFM at 13"WC. See attached for performance data.

Here is a summary of the static pressure calculations for each system. See attached drawing for a breakdown.

System #1: 11.16"WC

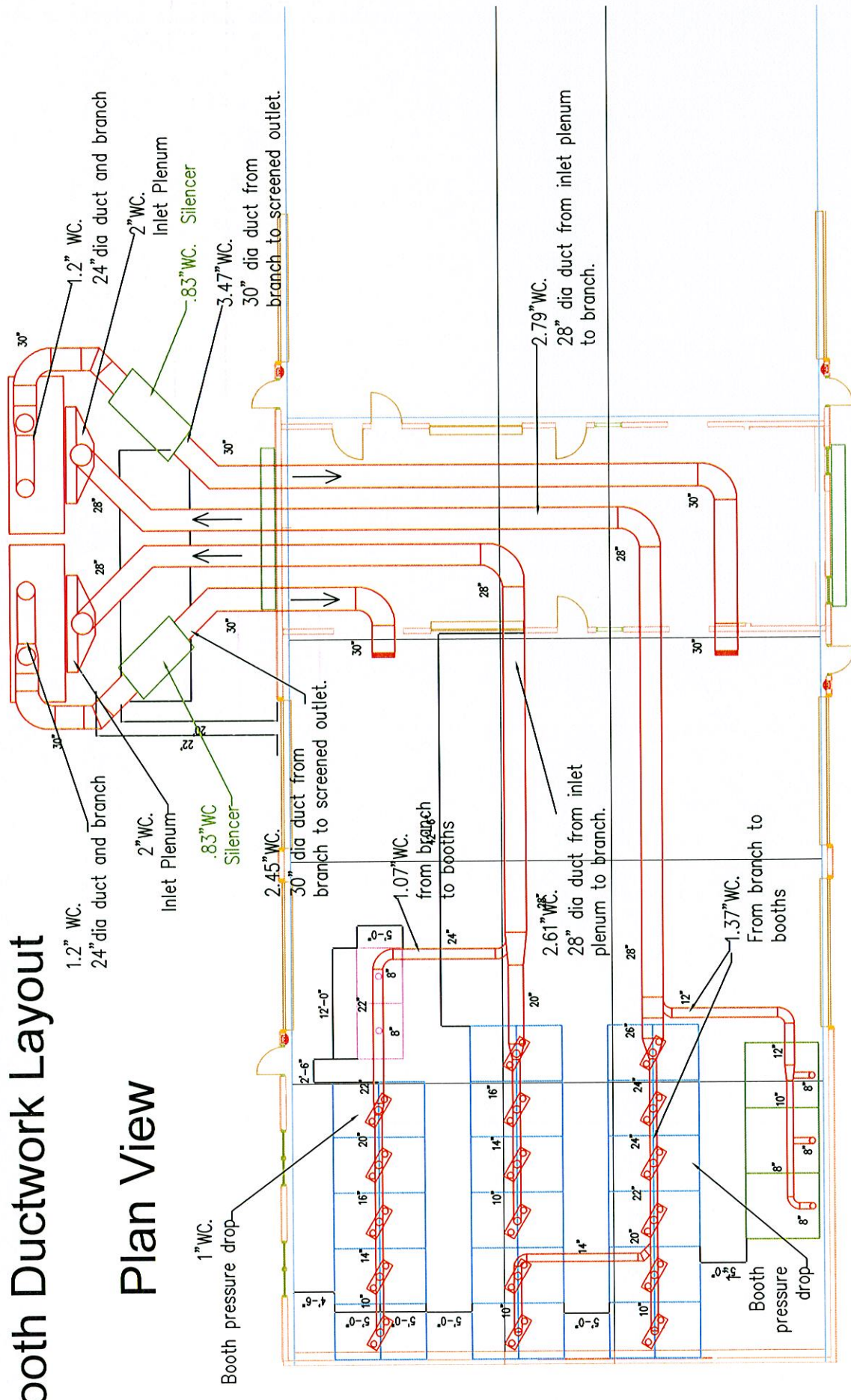
System #2: 12.66"WC

Note: Friction losses are based upon the vales in the Industrial Ventilation manual

Static Pressure Calculations Booth Ductwork Layout

System #1 System #2

Plan View



Oskar Environmental Products
 95 Cypress Drive
 Youngsville, NC 27596
 PH: 919-570-2862 F# 919-570-2863

Oskar

Project: Hartnell College
 Drawing: Static pressure calculations
 Date: 3/15/11 Drawn by: RAV

Sheet No:

SDC-30x2-40 DUST COLLECTOR

Model	Max static pressure (inch/H2O)	Max CFM	Hp	Volts	Hz	Impeller	Inlet
SDC-30x2-40 DUST COLLECTOR	13"	20000	30HP x 2 pcs	460V	60		

SDC-30x2-40	Static pressure (Inch/H2O)	13	12	11	10	8
	CFM	19300	20000	20800	21500	23000

