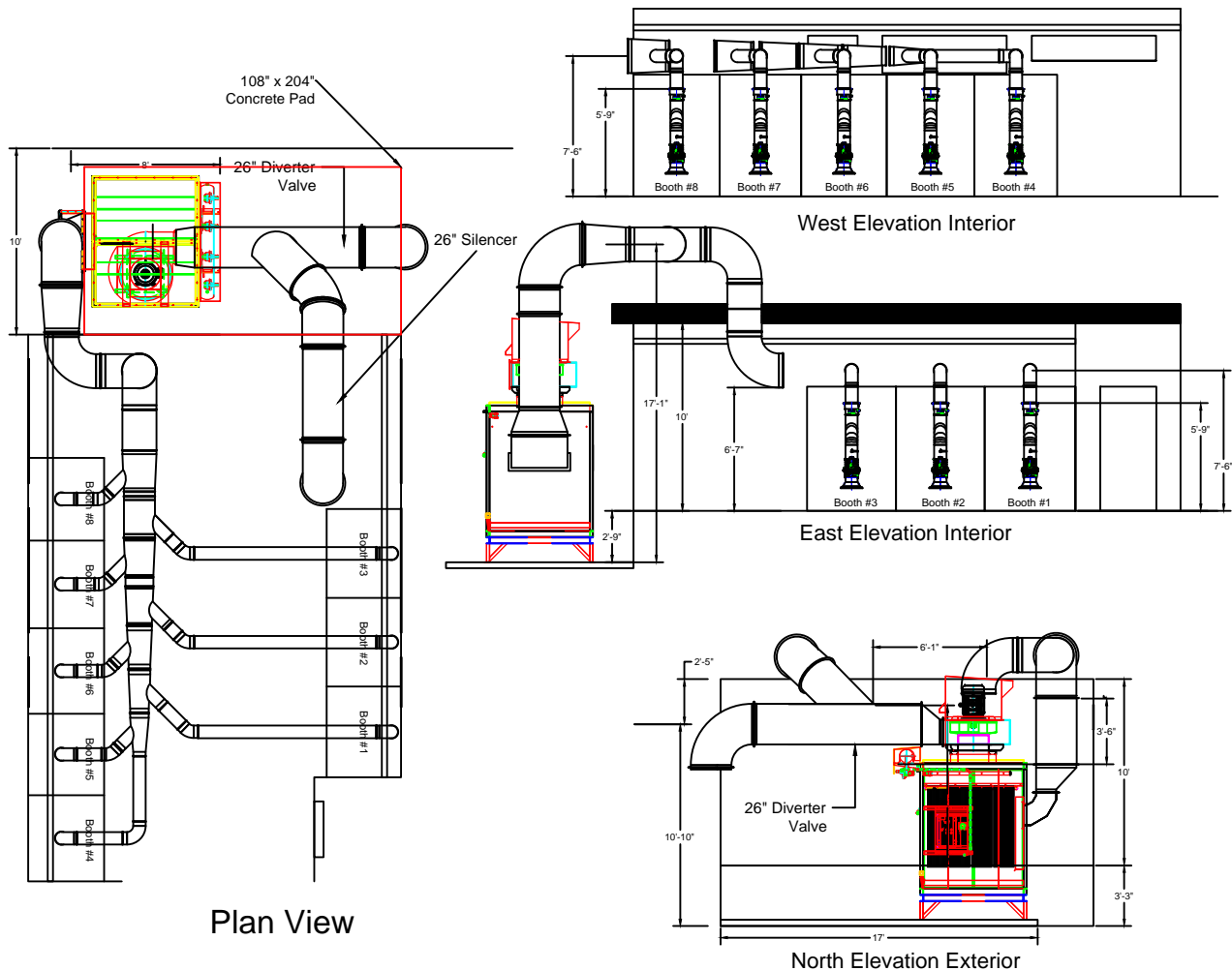


Gendco SO#20799

Revised Drawing

Duct Layout



Notes:

1. Clamp together duct to support from ceiling
2. Silencer attached off of fan
3. Arms to be supported off of booths
4. Avani Environmental standard installation crew is quoted out per day based on the above drawings and approvals. Any changes, modifications, downtime, or inability to perform our work above and beyond the control of Avani Environmental will charge an additional \$1,000 per work day (5 or more hours) per crew above what was initially quoted.

Avani Environmental Intl. Inc.
 95 Cypress Drive
 Youngsville, NC 27596
 P# 919-488-2862 F# 919-488-2863

Avani

Project: Gendco SO20799

Drawing: Approval Drawing

Date: 6/8/15

Drawn by: DJT

Sheet No: 1 OF 1

Rev: 2