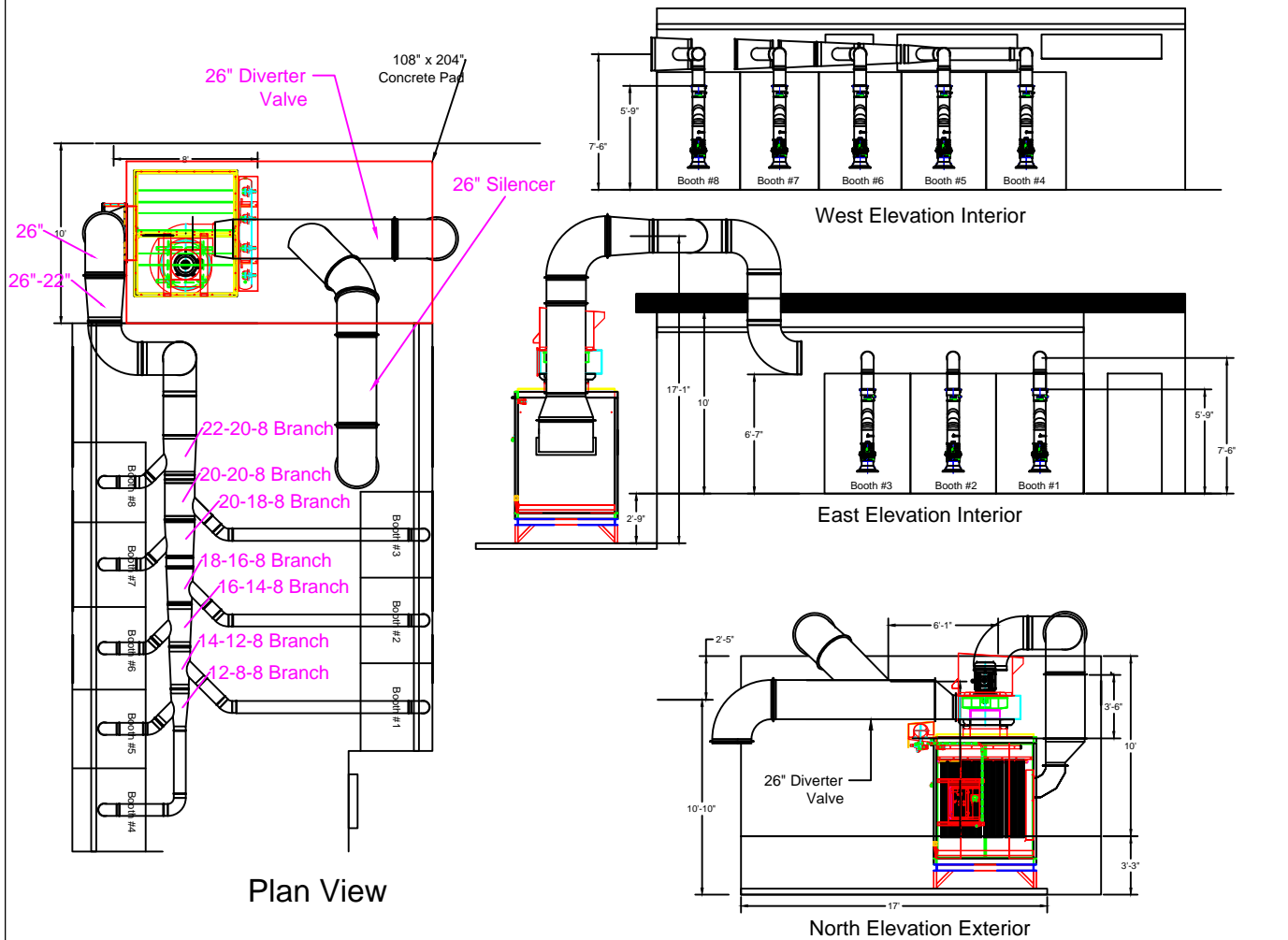


# Gendco SO#20799

## Revised Drawing

### Duct Layout



- Notes:
1. Clamp together duct to support from ceiling
  2. Silencer attached off of fan
  3. Arms to be supported off of booths
  4. Avani Environmental standard installation crew is quoted out per day based on the above drawings and approvals. Any changes, modifications, downtime, or inability to perform our work above and beyond the control of Avani Environmental will charge an additional \$1,000 per work day (5 or more hours) per crew above what was initially quoted.

Avani Environmental Intl. Inc. 95 Cypress Drive Youngsville, NC 27596 P# 919-488-2862 F# 919-488-2863		<b>Avani</b>
Project: Gendco SO20799		
Drawing: Approval Drawing		
Date: 6/8/15		Drawn by: DJT
Sheet No: 1 OF 1	Rev: 2	