

AVANI Top Mounted Dust Collector



Customer:	General Distributing Company-Helena, MT		
Customer PO#:	198751		
AVANI SO#:	20799	Tested By:	
Serial #:	140901		
Ship Date / Install Date:	6/23/14		

Please read and save these instructions. Read carefully before attempting to assemble, install, operate or maintain the product described. Protect yourself and others by observing all safety information. Failure to comply with instructions could result in personal injury and/or property damage! Retain instructions for future reference.



AVANI Top Mounted Dust Collector

General Safety Information

MACHINE WARNING SIGNS

DANGER


Indicates an imminently hazardous situation which, if not avoided, will result in death or serious injury.

WARNING

Indicates a potentially hazardous situation which, if not avoided, could result in death or serious injury.

CAUTION

Indicates a potentially hazardous situation which, if not avoided, may result in minor or moderate injury.

Used without the safety alert symbol () indicates potentially hazardous situation which, if not avoided, may result in property damage.



Warning of electric shock



Do not expose the equipment to rain or use in damp locations.



Do not use the equipment around flammable products, if not avoided, sparks can ignite vapors from flammable products. Read and understand all warnings and operating instructions before using this equipment. Failure to follow all instructions may result in electric shock, fire, and/or serious personal injury or property damage.

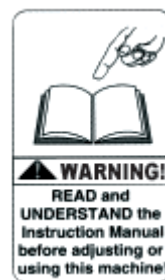


Figure 1

Please read and save these instructions. Read carefully before attempting to assemble, install, operate or maintain the product described. Protect yourself and others by observing all safety information. Failure to comply with instructions could result in personal injury and/or property damage! Retain instructions for future reference.

avani
environmental®



AVANI Top Mounted Dust Collector

TABLE OF CONTENT

MACHINE WARNING SIGNS	2
Specifications.....	3
ADDITIONAL WELDING FUME EXTRACTOR SAFETY RULES	5
Assembly.....	6
Installation	6
ELECTRICAL INSTALLATION.....	6
Operation	7
Filters.....	11
Filter Assembly	11
Repair Parts Illustration and Repair Parts List.....	15
Repair Parts List.....	16
Appendix 1 - Electrical Circuit Diagram	22
Contact Information	Error! Bookmark not defined.

Specifications

Motor	3 HP
.....	230V / 60Hz / 3Ph
Air Volume (C.F.M.)	1,500 Ft ³ /Min (42.45 M ³ /Min)
Filtration Stages	1st – aluminum mesh x 2 pcs
.....	Spec: 540 x 440 x 22 mm [21.3" x 17.3" x 0.87"]
.....	2nd – cartridge filter x 2 pcs
.....	Spec: Ø380 x 660 mm [Ø15" x 26"]
Dimension	143.05 x 128.5 x 139.66 cm (56.4" x 50.6" x 55")

Please read and save these instructions. Read carefully before attempting to assemble, install, operate or maintain the product described. Protect yourself and others by observing all safety information. Failure to comply with instructions could result in personal injury and/or property damage! Retain instructions for future reference.



AVANI Top Mounted Dust Collector

General Safety Information

(Continued)

▲ WARNING

*Use this product
carefully to*

*effectively avoid any possible danger.
Observe the following safety
regulations to avoid bodily injury due
to electrocution during use.*

Read this Manual carefully before operating the product and preserve the Operation Manual properly.

1. Keep work area clean and organized.
 - A disorderly working environment will cause inconvenience and danger during operation.
2. Check if the working environment is suitable for using the product.
 - Do not use the product in a humid environment.
 - Use the product in a good working environment to reduce risks.
 - Do not use the product in a flammable gas or liquid environment to avoid danger.
3. Keep other persons away from the product, except for the operator, to avoid danger.
 - Do not let children get close to the product. All wires used by the product shall be in a safe location to prevent children from touching them.
4. All tools shall be safely stored.
 - When the tools are not used, please store them in a dry place safely beyond the reach and access of children.
5. If the machine breaks down, contact a service technician. Do not attempt to repair and possibly damage the machine.
6. When using the product, be sure to put on a welding suit and mask.
7. Use the electrical wires correctly.
 - During use, do not drag the electrical wires forcefully. Do not use these wires if fraying or current leakage occurs to avoid injury to the operator.
8. Before replacing parts, shut off power to the machine.
 - Check that the switch is in "on" or "off" position. Do not attempt the replacement when the machine is running. To replace parts or filter material, make certain that the switch

Please read and save these instructions. Read carefully before attempting to assemble, install, operate or maintain the product described. Protect yourself and others by observing all safety information. Failure to comply with instructions could result in personal injury and/or property damage! Retain instructions for future reference.

avani
environmental®



AVANI Top Mounted Dust Collector

is "off".

9. Use the power cord correctly. The total length of power cord shall not exceed 10 feet to avoid low power due to a drop in voltage and to prevent a possible hazard.

▲ WARNING

When connecting the product, always follow the instructions in the Operation Manual to avoid injuries.

10. Care and Maintenance:

- Confirm that the parts/accessories have been fully assembled and will not adversely affect the machine operation.
 - Check if the machine is operated properly.
 - Replace damaged parts or accessories according to the instructions of the Manual. If the said instructions are not specified in the Manual, have a professional technician carry out the maintenance or replacement.
 - Check that the electrical specifications of this machine meet safety requirements, and that the maintenance is carried out by a professional technician. Use original manufacturer's parts and accessories to avoid injury.
- If a problem occurs, contact your dealer immediately.

ADDITIONAL WELDING FUME EXTRACTOR SAFETY RULES

The Welding Fume Extractor can be dangerous if it is operated incorrectly. Therefore, the product must be used cautiously to avoid causing a hazard or damage. Unnecessary injuries may occur by failing to follow the instructions of the Safety Rules Manual. Be sure to put on protection equipment or suit that can protect your body, such as helmet and eye mask to avoid injuries from occurring. If any doubts or any unfitness occurs during use, be sure to stop the operation immediately. Keep in mind that the user shall be liable for using according to the specified safety rules and for operating the machine correctly.

1. Read this Manual carefully before operating the product.
2. Be sure to follow local electrical and safety regulations and observe the electrical safety standards practiced in the relevant area. All electrical wire connections and installation shall be carried out by a professional technician.
3. Do not operate the product near flammable materials, as sparks may

AVANI Top Mounted Dust Collector

ignite these materials and cause an explosion. Please confirm there aren't any flammables near the working site to avoid hazard.

4. This product is suitable for collecting smoke and welding oil gas. Do not use it in collecting iron chips and dust at the same time to avoid producing sparks.
5. Before replacement of parts or filter materials, be certain that the switch is disconnected.
6. Do not kink the power cord and keep it away from oil, chemicals or flammables.
7. Check that the voltage, phase count and grounding wire match the machine requirements.
8. When the fan blades are operated at high speed, do not reach hand near these blades to prevent finger from breaking or clothes/necktie from getting caught. Do not put the hand or foreign matter into the air inlet to avoid getting caught in the high-speed rotation of fan blades.
9. When not in use, all air inlets of Welding Smoke Treatment Machine shall be covered.

Assembly

▲WARNING

Do not connect the Welding Smoke

Treatment Machine before the assembly is finished and you have read and understood all of the precautions stated in the Manual.

NOTE: For correct assembly, refer to the Illustrations and Parts List on pages 15-21.

Installation

MOVING AND TRANSPORTATION

The net weight of this machine is about 1256.6 lbs. It CANNOT be handled and transported without the help of lifting tools. For your safety, read all instructions

carefully.

▲WARNING

Do not move

without the help of others to avoid causing danger.

ELECTRICAL INSTALLATION

POWER CONNECTION

1. Confirm that the power is properly connected under normal power supply condition. It is recommended to provide manual shutdown device before connecting power.
2. It is recommended to protect the control equipment with suitable grade of fuse, and the length of fuse and power cord

AVANI Top Mounted Dust Collector

shall not be over 10 feet.

SHUTDOWN

1. Disconnect power by manual method.
2. When stopping operation, check if the switch is under off status.

EARTHING WIRE

Connect yellow/green wires to the grounding wire power jack. Confirm that the grounding wire has been properly connected before connecting main power cord to the machine at all times.



WARNING

***Do not disconnect
the wiring jack***

before cutting off power!

POWER INSTALLATION AND STORAGE

The electrical power is configured as following. If conditions are beyond the scope stated below, then it is required to ensure that the power is well arranged and safe.

- Ambient temperature: Between 41°F and 131°F. If the time is over 24 hours, then the ambient average temperature shall not be over 122°F.
- Humidity: Between 30% and 95%
- Altitude: 3,280 feet
- Moving and Storing: -13°F to 131°F. For short-time storage (less than 24 hours), the storage temperature can be up to 158°F.

Operation

PRIOR TO START UP

Purpose: The Welding Fume Extractor is specially suitable for treating the smoke generated during ordinary welding processing work, which can effectively collect and screen the smoke resulting from the welding work in maintaining the air quality of the working environment.

- Before starting the machine, be sure to read this Manual carefully.
- Before starting the machine, check if relevant safety protection measures have been taken according to the Manual.
- Before starting the machine, watch the motor turning direction according to the instruction of arrow direction.

START UP

1. To ensure satisfactory performance for the Welding Smoke Treatment Machine, please confirm the air volume, power and the matching table of the Welding Smoke Treatment Machine.
2. Connect power according to electrical installation procedure after installing the Welding Smoke Treatment Machine and the table. Disconnect power according to

AVANI Top Mounted Dust Collector

electrical installation procedure when the machine is not used.

3. The Welding Smoke Treatment Machine shall be turned on and off by pushing I/O button. Under normal operation status, use such I/O button.

Unpacking

The machine should be unpacked carefully. Check if the machine and components are consistent with those indicated in the Parts List. If any doubt arises or when the components are incomplete, contact your dealer.

OPERATION – Filter Cleaning

1. Attached compressed air to the unit for cleaning purposes, at a source pressure of 90 PSI. The connection point is accessed by removing the panel on the side of the unit where the PSI label is in place and requires a 1/4" NPT fitting. A regulator must be incorporated in line to set pressure. Do not exceed 90 PSI pressure.



2. Refer to control panel for initiating power to the motor and subsequent vacuum from the unit.
3. During operation, the pressure gauge should maintain a reading of 4" WIC pressure or less.
4. If pressure exceeds 4" WIC, or you experience a reduction in vacuum, proceed with the following action(s)
 - The unit should be powered off and the button pushed one to two times.
 - Cleaning as noted above should be daily or as any decrease in vacuum is observed.
5. If pressure continues to exceed 4" WIC and operating vacuum is weak after manual pulse cleaning, remove

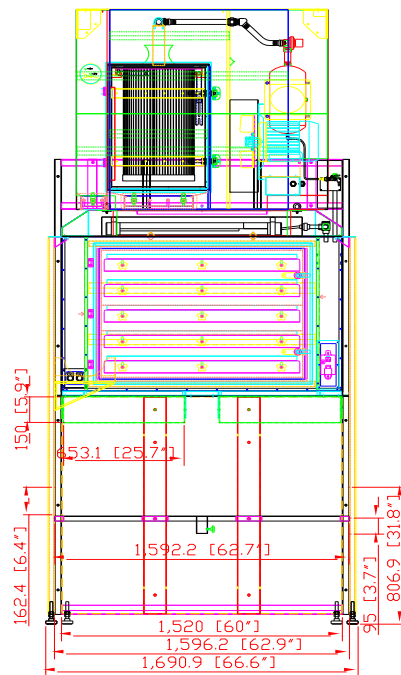
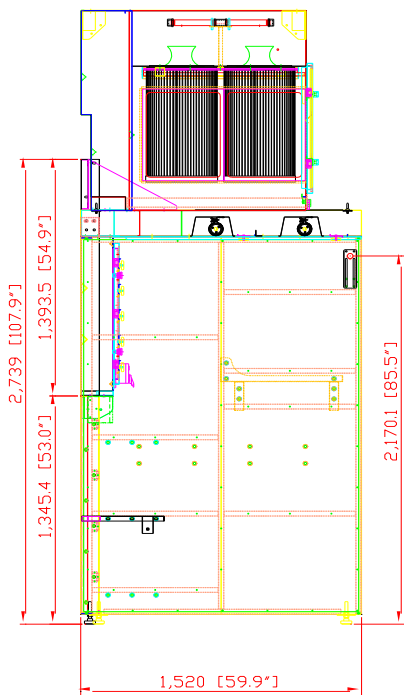
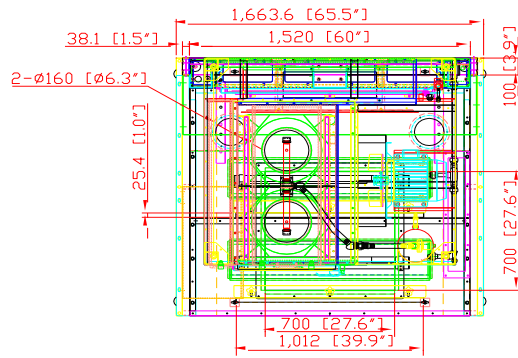
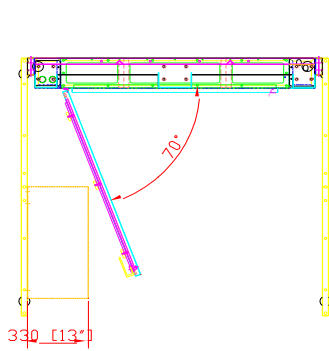
AVANI Top Mounted Dust Collector

the metal filter, clean with compressed air and re-install.

6. If vacuum remains weak after cleaning the metal filter, contact AVANI for filter replacement. (See contact list in this manual).

AVANI Top Mounted Dust Collector

Dimensions (in mm/inches)



AVANI Top Mounted Dust Collector

Filters



Figure 2 - Filters

1. **ALUMINUM MESH** captures sparks and steel chips.
 - (1) specification: 540 x 440 x 22 mm [21.3" x 17.3" x 0.87"]
 - (2) required quantity: 2 pcs
 - (3) filter efficiency: 25 ~ 30%
2. **PLEATED CARTRIDGE FILTER** that can be cleaned by push-button pulse-jet cleaning of the cartridge filter from an onboard air tank.

- (1) specification: Ø380 x 660 mm [Ø15" x 26"]
- (2) required quantity: 2 pcs
- (3) material: Polyester with TEFLON treatment & coating.
- (4) filtering area: 15m² x 2 = 30m² (322.8 ft²)

Filter Assembly

- **Aluminum mesh:**



1. Pull out the aluminum mesh and dispose it away. Install with a new one.

- **Cartridge filter installation procedure:**

AVANI Top Mounted Dust Collector

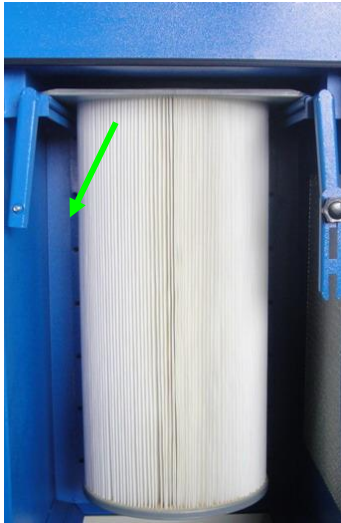


1. Open the front maintenance door of the top mounted dust collector.



2. Loosen the knobs (circled in green). Release the filter handle fixing plates. Slide the filter handle fixing plates.

AVANI Top Mounted Dust Collector



3. Pull down the left and right filter handles.



4. Pull out the cartridge filter.
5. Take out the cartridge filter set and install with a new cartridge.



6. Slide the new cartridge into the track and push it to the end.



7. Pull up the left and right filter handles.

AVANI Top Mounted Dust Collector



8. Attach the filter handle fixing plate upon the left and right filter handles. Slide and secure them in position. Fasten the plates and handles with knobs (circled in green).



9. Close the front maintenance door of the top mounted dust collector. Assembly completed.

AVANI Top Mounted Dust Collector

Repair Parts Illustration and Repair Parts List For Repair Parts, call +1-919-570-2862

24 hours a day – 365 days a year

Please provide following information:

- Model number
- Serial number (if any)
- Part description and number as shown in parts list

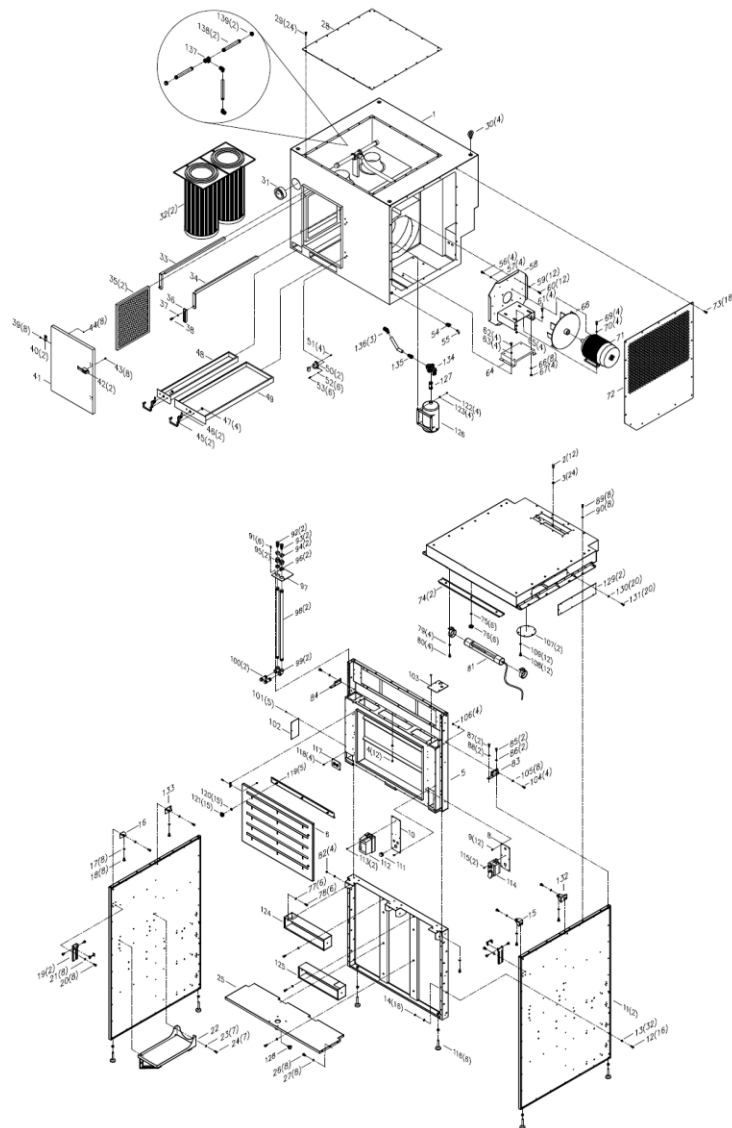


Figure 3

AVANI Top Mounted Dust Collector

Repair Parts List

Repair Parts List for Top Mount Dust Collector

Reference Number	Description	Part Number	Quantity
1	Filter Chamber	A02-01-SDC-B-3-2-1	1
2	Hex Screw (5/16"*3/4")	A02-01-SDC-B-3-2-2	14
3	Flat Washer(5/16"*OD23*2t)	A02-01-SDC-B-3-2-3	28
4	Lock Nut(5/16")	A02-01-SDC-B-3-2-4	14
5	Backdraft Module	A02-01-SDC-B-3-2-5	1
6	Door	A02-01-SDC-B-3-2-6	1
8	Cable Connector Panel (front)	A02-01-SDC-B-3-2-7	1
9	Round Phillips Head Screw(3/16"*3/8")	A02-01-SDC-B-3-2-8	12
10	Control Panel Fixing Plate	A02-01-SDC-B-3-2-9	1
11	Side Panel	A02-01-SDC-B-3-2-10	2
12	Half-threaded Screw(3/8"*4")	A02-01-SDC-B-3-2-11	16
13	Flat Washer(3/8"*OD23*2t)	A02-01-SDC-B-3-2-12	32
14	Lock Nut(3/8")	A02-01-SDC-B-3-2-13	16
15	Fixing Base - 1	A02-01-SDC-B-3-2-14	1
16	Fixing Base - 2	A02-01-SDC-B-3-2-15	1
17	Flat Washer(5/16"/OD23*2t)	A02-01-SDC-B-3-2-16	8
18	Hex Screw(5/16"*3/4")	A02-01-SDC-B-3-2-17	8
19	Adjustable Curtain Rods	A02-01-SDC-B-3-2-18	2
20	Hex Screw(1/4"*3/4")	A02-01-SDC-B-3-2-19	8
21	Flat Washer(1/4"*OD19*2t)	A02-01-SDC-B-3-2-20	8
22	CO2 Bracket	A02-01-SDC-B-3-2-21	1
23	Flat Washer(5/16"*OD23*2t)	A02-01-SDC-B-3-2-22	7

AVANI Top Mounted Dust Collector

Reference Number	Description	Part Number	Quantity
24	Hex Screw(5/16"*3/4")	A02-01-SDC-B-3-2-23	7
25	Adjustable Backshelf	A02-01-SDC-B-3-2-24	1
26	Hex Screw(5/16"*3/4")	A02-01-SDC-B-3-2-25	8
27	Flat Washer(5/16"*OD18*2t)	A02-01-SDC-B-3-2-26	8
28	Seal Cover (upper)	A02-01-SDC-B-3-2-27	1
29	Phillips Head Screw(1/4 "3/4")	A02-01-SDC-B-3-2-28	24
30	Eye Bolt(M16*20)	A02-01-SDC-B-3-2-29	4
31	Sensocon Gauge	A02-01-SDC-B-3-2-30	1
32	Cartridge Filter(ψ380*660)	SV-FT-C-08-380*660LB	2
33	Filter Handle (right)	A02-01-SDC-B-3-2-33	1
34	Filter Handle (left)	A02-01-SDC-B-3-2-34	1
35	Aluminum Mesh(440*540*22mm)	SV-FT-A-07-E0047	2
36	Compression Latch Base	A02-01-SDC-B-3-2-36	1
37	Flat Washer(5/16"*OD18*2t)	A02-01-SDC-B-3-2-37	1
38	Knob(5/16"*3/4")	A02-01-SDC-B-3-2-38	1
39	Cap Screw(M5*10)	A02-01-SDC-B-3-2-39	8
40	Hinge	A02-01-SDC-B-3-2-40	2
41	Door	A02-01-SDC-B-3-2-41	1
42	Compression Latch	A02-01-SDC-B-3-2-42	2
43	Countersunk Inner Hex Screw(M5*14)	A02-01-SDC-B-3-2-43	8
44	Flange Nut(M5)	A02-01-SDC-B-3-2-44	8
45	Drawer Handle	A02-01-SDC-B-3-2-45	2
46	Drawer Lock	A02-01-SDC-B-3-2-46	2
47	Hex Nut(M10)	A02-01-SDC-B-3-2-47	4
48	Drawer (small)	A02-01-SDC-B-3-2-48	1

AVANI Top Mounted Dust Collector

Reference Number	Description	Part Number	Quantity
49	Drawer (large)	A02-01-SDC-B-3-2-49	1
50	Compression Latch Base	A02-01-SDC-B-3-2-50	2
51	Countersunk Inner Hex Screw(M5*14)	A02-01-SDC-B-3-2-51	4
52	Flat Washer(1/4"/OD12*1t)	A02-01-SDC-B-3-2-52	6
53	Hex Screw(1/4"*3/4")	A02-01-SDC-B-3-2-53	6
54	Switch Valve(1/4")	A02-01-SDC-B-3-2-54	1
55	Connector(1/4")	A02-01-SDC-B-3-2-55	1
56	Hex Screw(1/2"*3/4")	A02-01-SDC-B-3-2-56	4
57	Lock Washer(1/2")	A02-01-SDC-B-3-2-57	4
58	Motor Base	A02-01-SDC-B-3-2-58	1
59	Flat Washer(5/16"/OD23*2t)	A02-01-SDC-B-3-2-59	12
60	Hex Screw(5/16"*3/4")	A02-01-SDC-B-3-2-60	12
61	Hex Screw(5/16"*1")	A02-01-SDC-B-3-2-61	4
62	Hex Screw(5/16"*3/4")	A02-01-SDC-B-3-2-62	4
63	Flat Washer(5/16"/OD23*2t)	A02-01-SDC-B-3-2-63	4
64	Motor Supporting Base	A02-01-SDC-B-3-2-64	1
65	Hex Nut(3/8")	A02-01-SDC-B-3-2-65	4
66	Flat Washer(5/16"*OD23*2t)	A02-01-SDC-B-3-2-66	4
67	Hex Nut(5/16")	A02-01-SDC-B-3-2-67	4
68	14" Impeller	A02-01-SDC-B-3-2-68	1
69	Hex Screw(3/8"*1-1/2")	A02-01-SDC-B-3-2-69	4
70	Flat Washer(3/8"/OD23*2t)	A02-01-SDC-B-3-2-70	4
71	Motor	A02-01-SDC-B-3-2-71	1
72	Right Side Panel	A02-01-SDC-B-3-2-72	1
73	Phillips Head Screw(1/4"*3/4")	A02-01-SDC-B-3-2-73	18

AVANI Top Mounted Dust Collector

Reference Number	Description	Part Number	Quantity
74	Slot Cover	A02-01-SDC-B-3-2-74	2
75	Flat Washer(3/8"*OD23*2t)	A02-01-SDC-B-3-2-75	6
76	Knob	A02-01-SDC-B-3-2-76	6
77	Hex Screw(5/16"*3/4")	A02-01-SDC-B-3-2-77	6
78	Flat Washer(5/16"*OD18*2t)	A02-01-SDC-B-3-2-78	6
79	Flat Washer(1/4"*OD19*2t)	A02-01-SDC-B-3-2-79	4
80	Hex Screw(1/4"*3/4")	A02-01-SDC-B-3-2-80	4
81	Working Light(18W)	A02-01-SDC-B-3-2-81	1
82	Lock Nut(5/16")	A02-01-SDC-B-3-2-82	4
83	Panel Top Joints - 1	A02-01-SDC-B-3-2-83	1
84	Panel Top Joints - 2	A02-01-SDC-B-3-2-84	1
85	Hex Screw(3/8"*1-1/2")	A02-01-SDC-B-3-2-85	2
86	Flat Washer(3/8"/OD23*2t)	A02-01-SDC-B-3-2-86	2
87	Hex Screw(5/16"*3/4")	A02-01-SDC-B-3-2-87	2
88	Flat Washer(5/16"/OD23*2t)	A02-01-SDC-B-3-2-88	2
89	Hex Screw(5/16"*3/4")	A02-01-SDC-B-3-2-89	10
90	Flat Washer(5/16"/OD23*2t)	A02-01-SDC-B-3-2-90	10
91	Round Phillips Head Screw(3/16 "*3/8")	A02-01-SDC-B-3-2-91	6
92	Nozzle	A02-01-SDC-B-3-2-92	2
93	Connector	A02-01-SDC-B-3-2-93	2
94	Bushing	A02-01-SDC-B-3-2-94	2
95	Connector	A02-01-SDC-B-3-2-95	2
96	Dust-tight Gasket	A02-01-SDC-B-3-2-96	2
97	Pipe Connector Panel (top)	A02-01-SDC-B-3-2-97	1
98	Nipple	A02-01-SDC-B-3-2-98	2

AVANI Top Mounted Dust Collector

Reference Number	Description	Part Number	Quantity
99	Elbow(3/4")	A02-01-SDC-B-3-2-99	2
100	Nipple	A02-01-SDC-B-3-2-100	2
101	Phillips Head Sheet Metal Screw(5/32 "*1/2")	A02-01-SDC-B-3-2-101	10
102	Seal Board	A02-01-SDC-B-3-2-102	2
103	Cable Connector Panel (top)	A02-01-SDC-B-3-2-103	1
104	Hex Screw(5/16"*3/4")	A02-01-SDC-B-3-2-104	4
105	Flat Washer(5/16"/OD23*2t)	A02-01-SDC-B-3-2-105	8
106	Lock Nut(5/16")	A02-01-SDC-B-3-2-106	4
107	6" Hole cover	A02-01-SDC-B-3-2-107	2
108	Hex Screw(1/4"*3/4")	A02-01-SDC-B-3-2-108	12
109	Flat Washer(1/4"*OD19*2t)	A02-01-SDC-B-3-2-109	12
111	Manual Air Pulse Jet Button	A02-01-SDC-B-3-2-110	1
112	Magnetic Switch	A02-01-SDC-B-3-2-111	1
113	Phillips Head Sheet Metal Screw(5/32 "*3/4")	A02-01-SDC-B-3-2-112	2
114	Light Switch	A02-01-SDC-B-3-2-113	1
115	Phillips Head Sheet Metal Screw(5/32 "*1/2")	A02-01-SDC-B-3-2-114	2
116	Adjustable Feet	A02-01-SDC-B-3-2-115	6
117	Pipe Connector Panel (front)	A02-01-SDC-B-3-2-116	1
118	Phillips Head Sheet Metal Screw(5/32 "*1/2")	A02-01-SDC-B-3-2-117	4
119	Backdraft Module - Slot Cover	A02-01-SDC-B-3-2-119	5
120	Flat Washer(3/8"*OD23*2t)	A02-01-SDC-B-3-2-120	15
121	Knob	A02-01-SDC-B-3-2-121	15

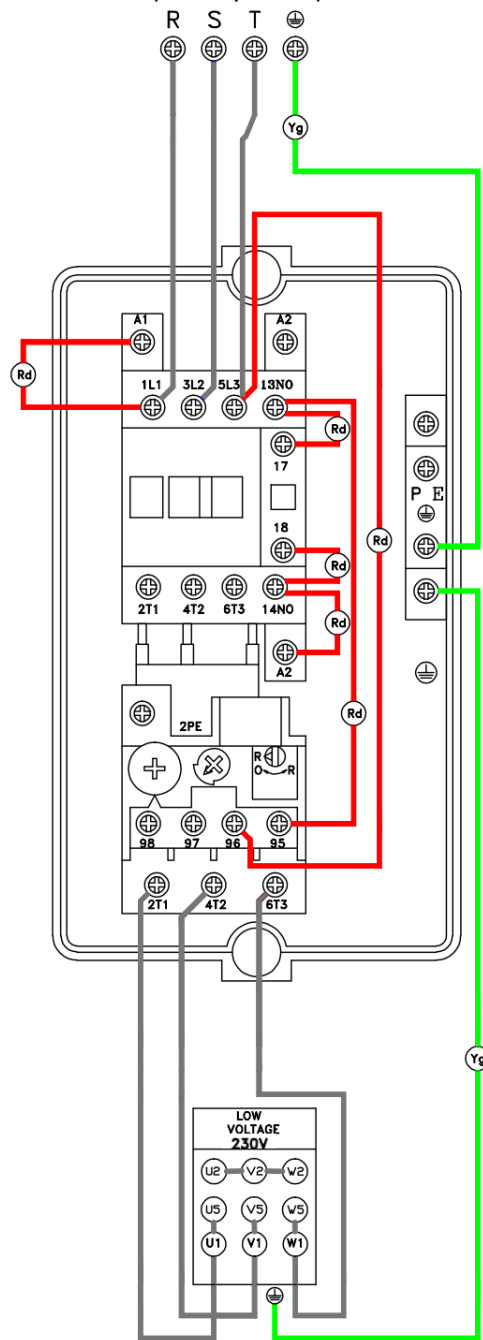
AVANI Top Mounted Dust Collector

Reference Number	Description	Part Number	Quantity
122	Lock Nut(5/16")	A02-01-SDC-B-3-2-122	4
123	Flat Washer(5/16"/OD23*2t)	A02-01-SDC-B-3-2-123	4
124	Tool Box - (left)	A02-01-SDC-B-3-2-124	1
125	Tool Box - (right)	A02-01-SDC-B-3-2-125	1
126	Air Tank	A02-01-SDC-B-3-2-126	1
127	Nipple	A02-01-SDC-B-3-2-127	1
128	Knob	A02-01-SDC-B-3-2-128	1
129	Service Side Panel	A02-01-SDC-B-3-2-129	2
130	Flat Washer(1/4"*OD19*2t)	A02-01-SDC-B-3-2-130	20
131	Hex Screw(1/4"*3/4")	A02-01-SDC-B-3-2-131	20
132	Fixing Base - 3	A02-01-SDC-B-3-2-132	1
133	Fixing Base - 4	A02-01-SDC-B-3-2-133	1
134	Magnetic Valve	A02-01-SDC-B-3-2-134	1
135	Connector	A02-01-SDC-B-3-2-135	1
136	Elbow Connector	A02-01-SDC-B-3-2-136	3
137	Connector	A02-01-SDC-B-3-2-137	1
138	Nipple	A02-01-SDC-B-3-2-138	2
139	1" Cap	A02-01-SDC-B-3-2-139	2

AVANI Top Mounted Dust Collector

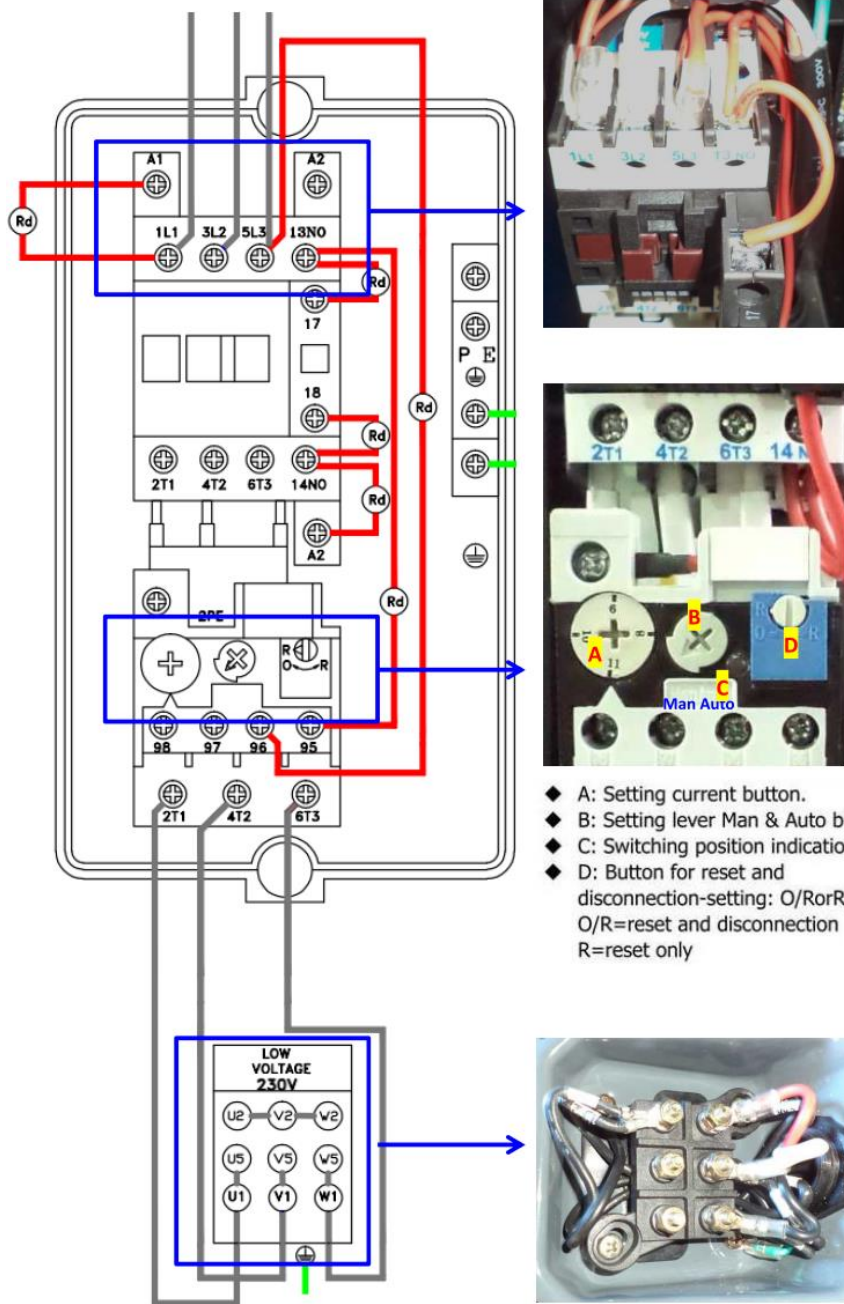
Appendix 1 - Electrical Circuit Diagram

3HP/230V/60HZ/3PH



AVANI Top Mounted Dust Collector

3HP/230V/60HZ/3PH



AVANI Top Mounted Dust Collector

Contact Information

Avani Environmental International Inc.

95 Cypress Drive,

Youngsville, NC 27596

Email: info@avanienvironmental.com

www.avanienvironmental.com

Customer Service: info@avanienvironmental.com

Tel: 919-570-2862 ext.5167

Engineering Service: engineering@avanienvironmental.com

Tel: 919-570-2862 ext.5162