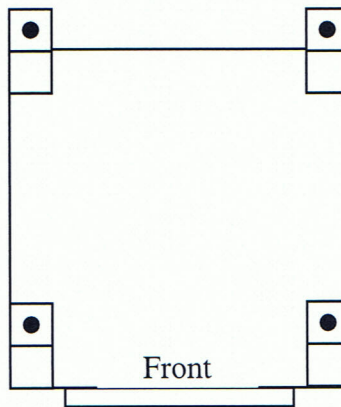
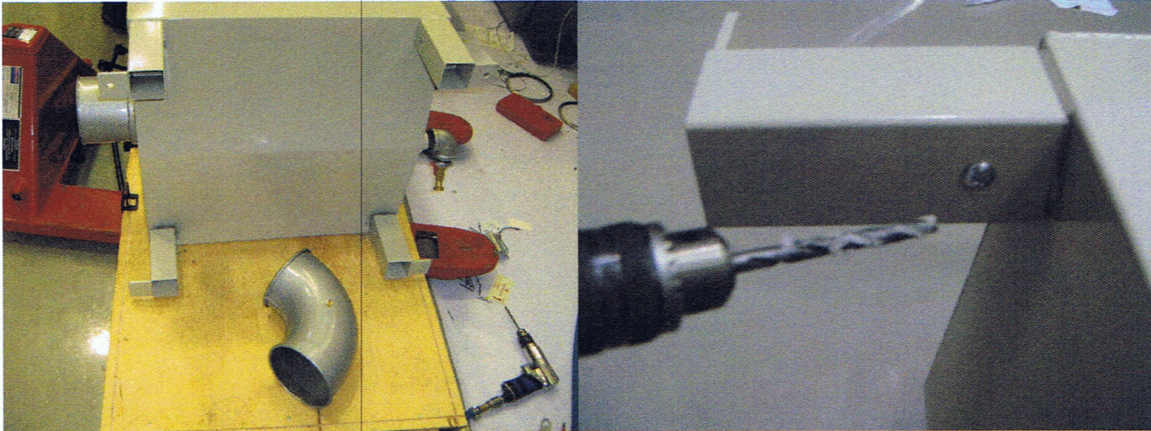


## Exhaust Unit (Type 2) Preparation Procedures

### Step 1: Install legs

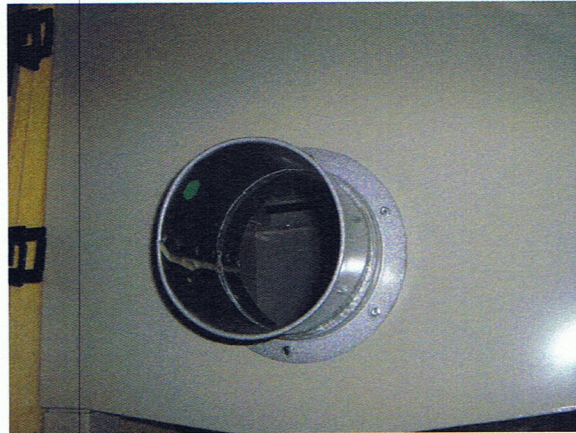
- Keep the unit flat on its back and install the pre-cut extension legs.
- The new legs should be 6 inches in length, and should also slide over top of the existing ones (be sure to keep the stabilizer flaps pointing to the back (the doors are on the front) of the machine).
- Drill through to allow for a  $\frac{1}{4}$  - 20 bolt to be placed and a lock-nut to be placed inside.



## Exhaust Unit (Type 2) Preparation Procedures

### Step 2: Install Ventilation Collar

- Install the ventilation collar over the hole on the left side of the unit.
- Use self-tapping metal screws provided by the supplier (located on the inside of the cover of the right side opening).
- Rotate the collar so you can screw into undrilled metal. Do not screw into the pre-drilled holes because the holes are too big for the screws.



### Step 3: Install Drain Valve

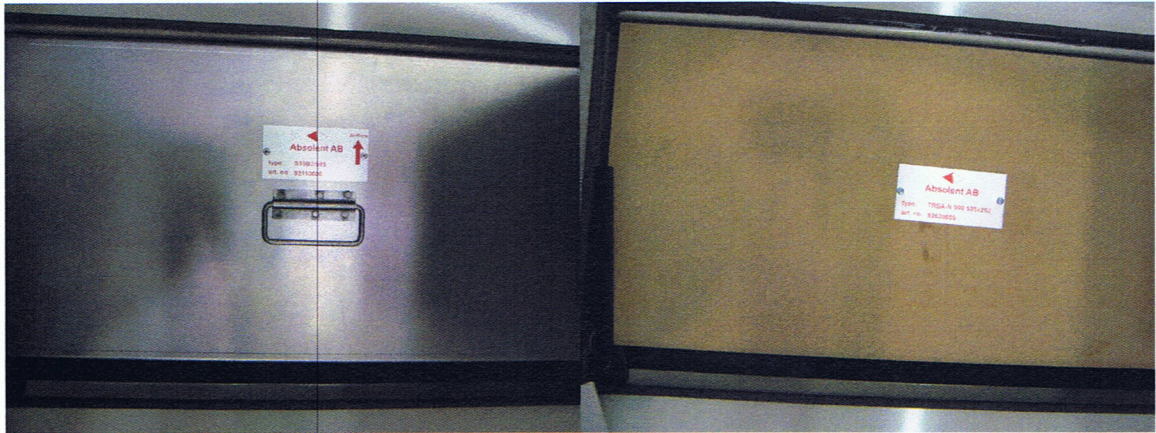
- Install the elbow and drain valve on the right side of the machine, be sure that the elbow has a downward slant for better drainage.



## Exhaust Unit (Type 2) Preparation Procedures

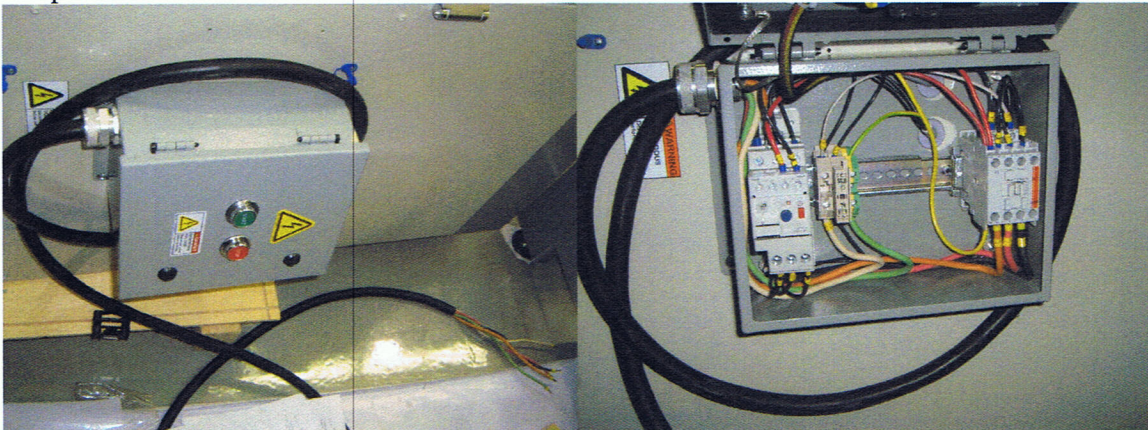
### Step 4: Change Labels

- Verify that the part number on the pre filter (lower filter) is “S10B3/595”.
- Remove any stickers with the Absolent brand name and model number.
- Remove the owner’s manual.
- Remove (unscrew) the plate located on the HEPA filter (upper filter.).
- Using a 1/8 inch drill bit drill the rivets holding the name and or model number plates:
  - One located on the pre filter (lower filter)
  - One located on the right side of the unit.
- Fill current holes on pre-filter with new rivets for better seal.



### Step 5: Install Electrical Box

- Stand unit in its upright position.
- Remove the old electrical box from the unit leaving the wires and moisture barrier grommets.
- Install the preassembled electrical box and connect the wires as per electrical drawings provided.



- Ensure that 15 feet of 14/5 wire is attached to the electrical box via proper strain relieves for on site connection.

## Exhaust Unit (Type 2) Preparation Procedures

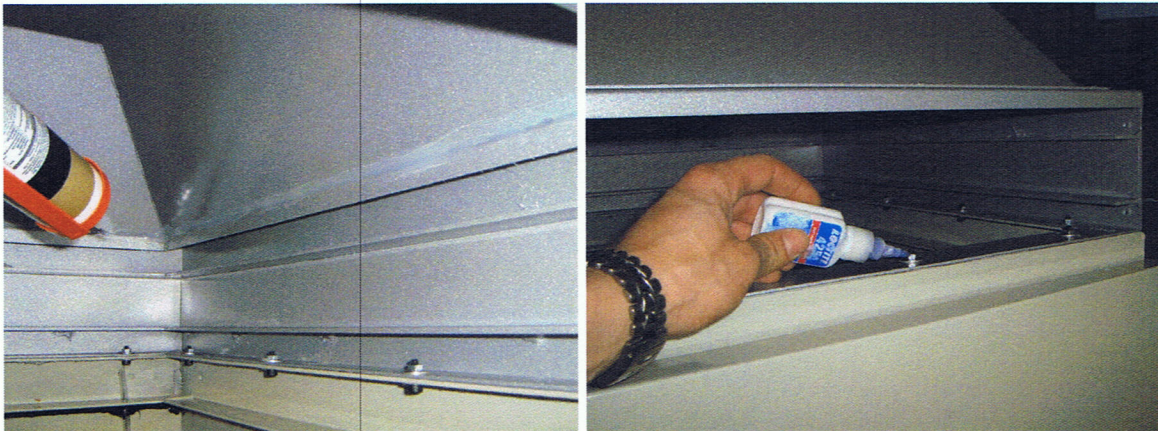
### Step 6: Install Labels

- Install an electrical safety label onto the electrical box.
- Install the Gandhi logo in the centre of the upper filter door.



### Step 7: Install Vent Hood

- Install the vent hood onto the unit.
- Use a thin bead of clear silicone on top of the unit staying to the outside of the provided screw holes.
- Place the hood on top and secure using 16 M5x14 screws and nuts using large washers approximately 5/8 inch diameter.
- Use a small amount of Blue 425 medium strength Loctite on each screw.
- Place a small bead of silicone on the inside upper portion of the vent hood.

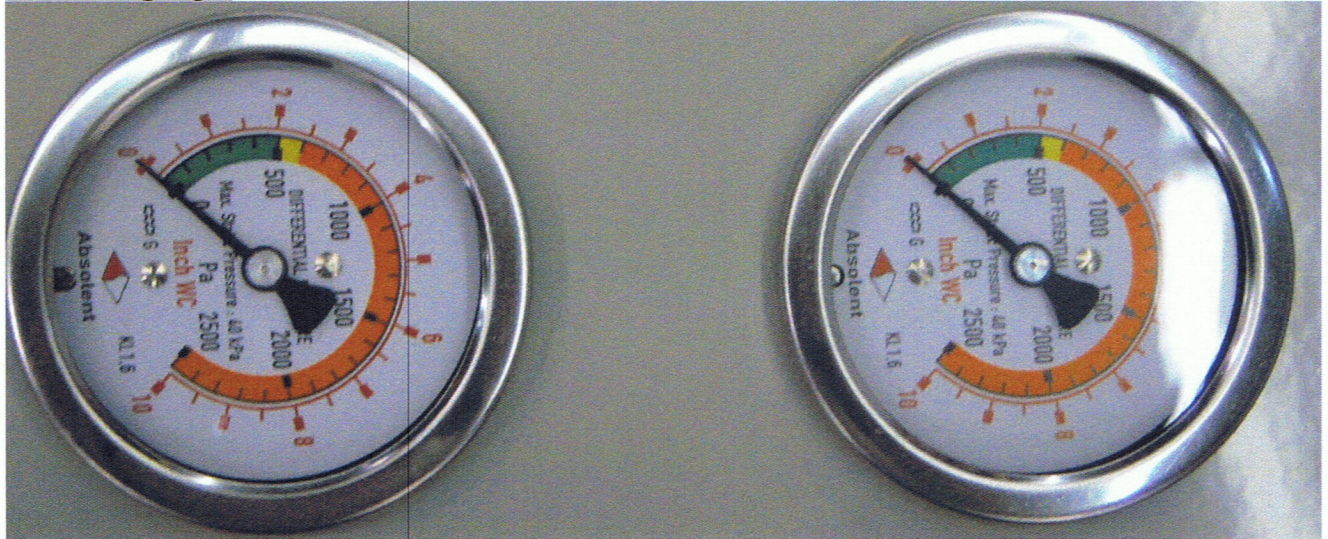


## Exhaust Unit (Type 2) Preparation Procedures

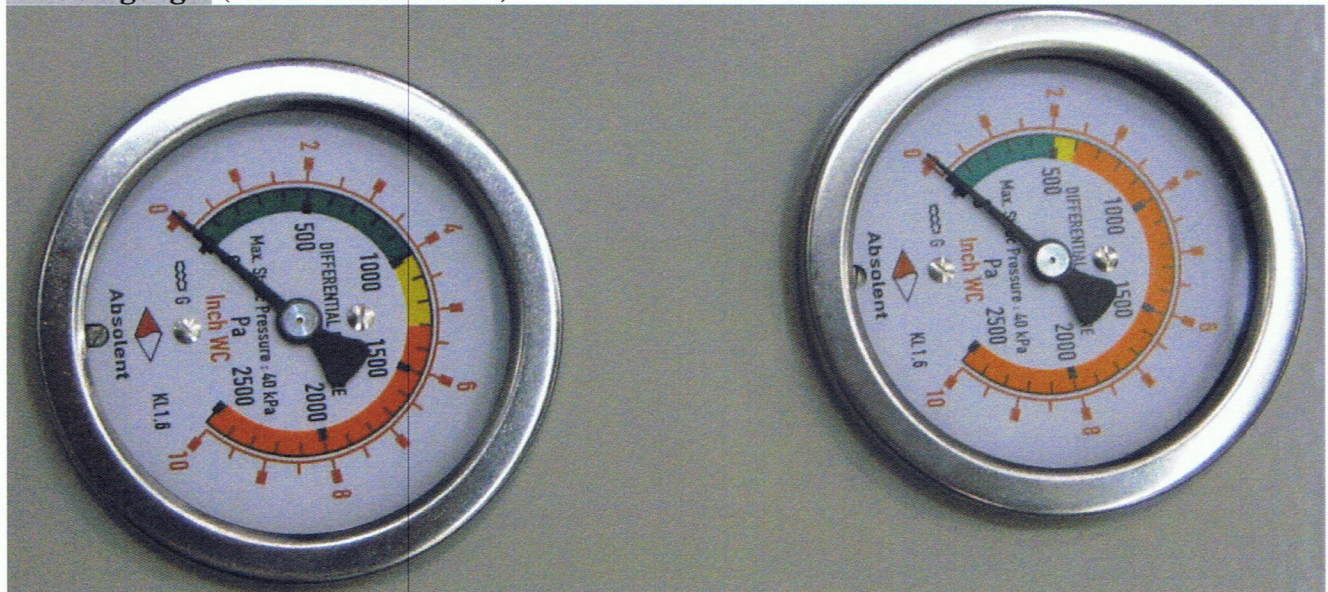
### Step 8: Verify Gauges

- Check that the top pressure gauge on the front of the unit has a green bars that goes from 0 to 2.
- Check that the bottom pressure gauge on the front of the unit has a green bars that goes from 0 to 4.
- If the wrong gauges are installed, then the supplier must provide replacements.

#### Incorrect gauges (Green bar ends at 2)



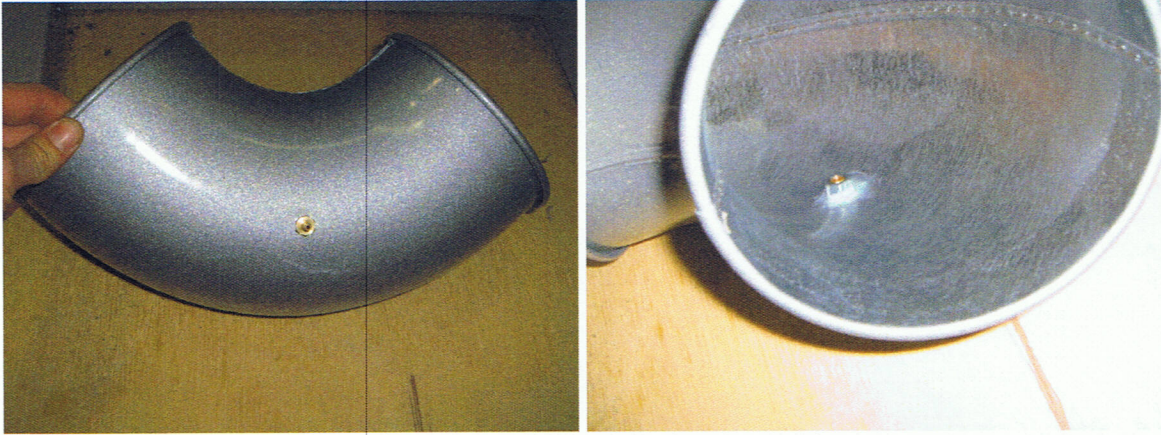
#### Correct gauges (Green bar ends at 4)



## Exhaust Unit (Type 2) Preparation Procedures

### Step 9: Assemble Ducting

- Install a NPT brass barb fitting on the elbow.
- Use some clear silicone to seal around the barb.



- Install two air plugs onto the back two openings of the pressure gauge. Use Teflon tape to seal the plugs.
- Mount the pressure gauge.
- Assemble the venting as per picture below. The adjusting handles and pressure gauge must be on the same side. The NPT bar must be on the side opposite from the pressure gauge.
- Connect the barb on elbow to the 'High' port on the side of the pressure gauge mounted on the cold air intake stack using SE 200 1/8" ID clear Tygon tubing.

