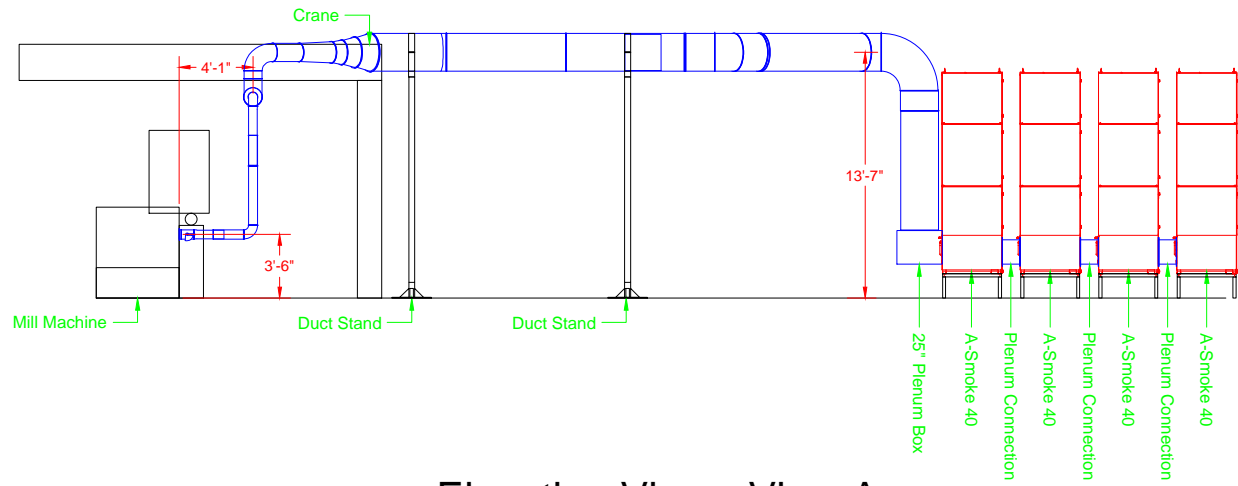
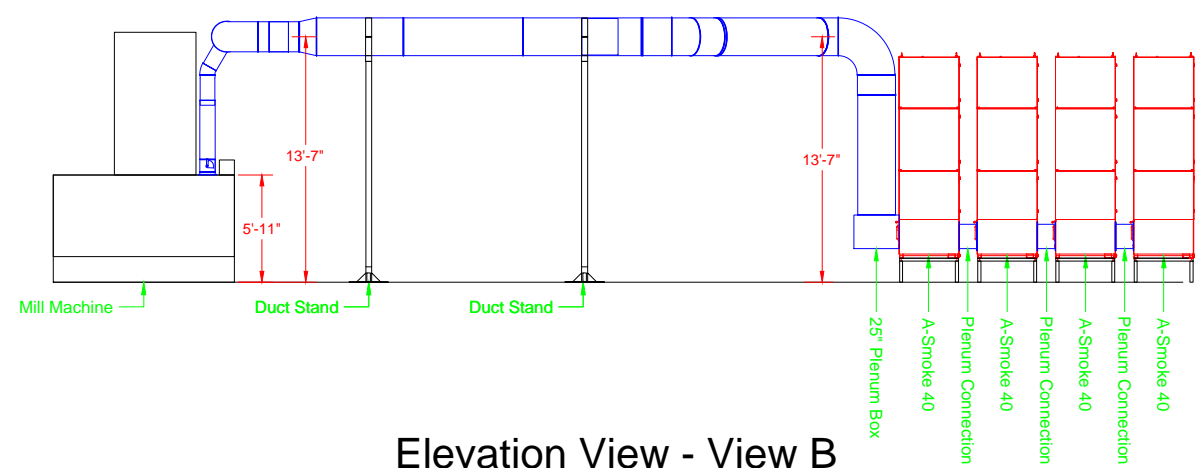


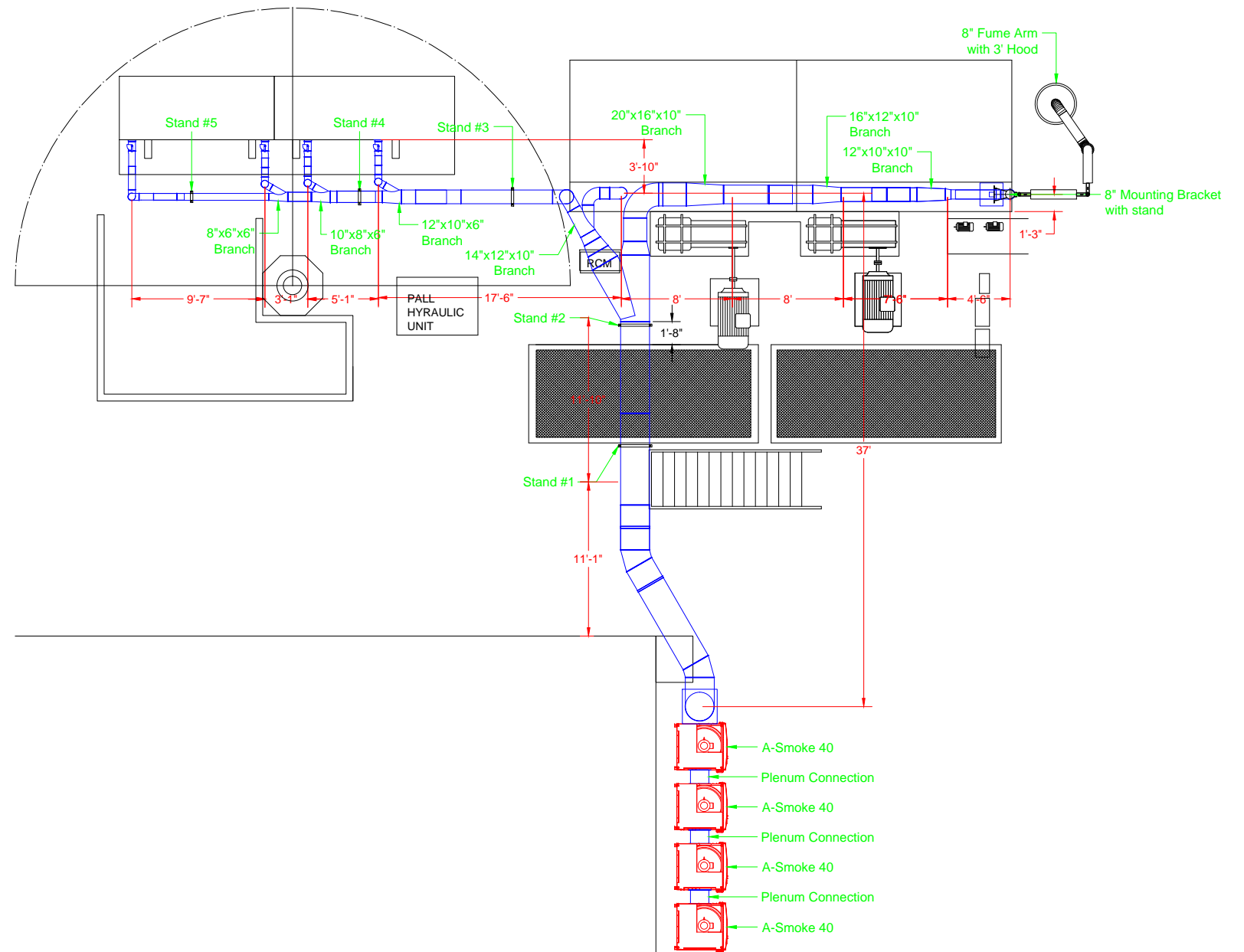
Freeport McMoran Duct Layout



Elevation View - View A



Elevation View - View B



Plan View

Bill of Materials		
Item	Quantity	Description
A-Smoke 40 with Stand	4	A-Smoke 40 mounted on Absolent Stand - 155"(H) x 44"(L) x 46"(W)
A-Smoke 40 Transitions	3	Common Plenum Transitions - 12"(H) x 12"(L) x 24"(W)
Ø25" Plenum Box	1	Duct Transition to A-Smoke 40 - 14"(H) x 32"(W) x 30"(L)
Duct Stands	5	Duct Supports - 175"(H) x 24"(L) x 24"(W)
Double Pivot Boom	1	Swivel Boom - dual pivot joints
Fume Arm with Ø36" Hood	1	Fume Arm with expansion hood
Mounting Bracket	1	Bracket to mount booms to mezzanine structure
Mounting Bracket Stand	1	Bracket to mount booms to mezzanine structure
Jacobs Duct	N/A	N/A
Flanged Duct	N/A	N/A

Notes:

1. Clamp together duct to support from duct stands
2. A-Smoke 40's are daisy-chained together
3. Brackets near clamps to ensure easy duct removal
4. Avani Environmental standard installation crew is quoted out per day based on the above drawings and approvals. Any changes, modifications, downtime, or inability to perform our work above and beyond the control of Avani Environmental will charge an additional \$1,000 per work day (5 or more hours) per crew above what was initially quoted.

Avani Environmental Intl. Inc.
95 Cypress Drive
Youngsville, NC 27596
P# 919-488-2862 F# 919-488-2863

Avani

Project: Freeport McMoran

Drawing: Duct Layout

Date: 8/26/14

Drawn by: MDT

Sheet No: 1 OF 1

Rev: 0