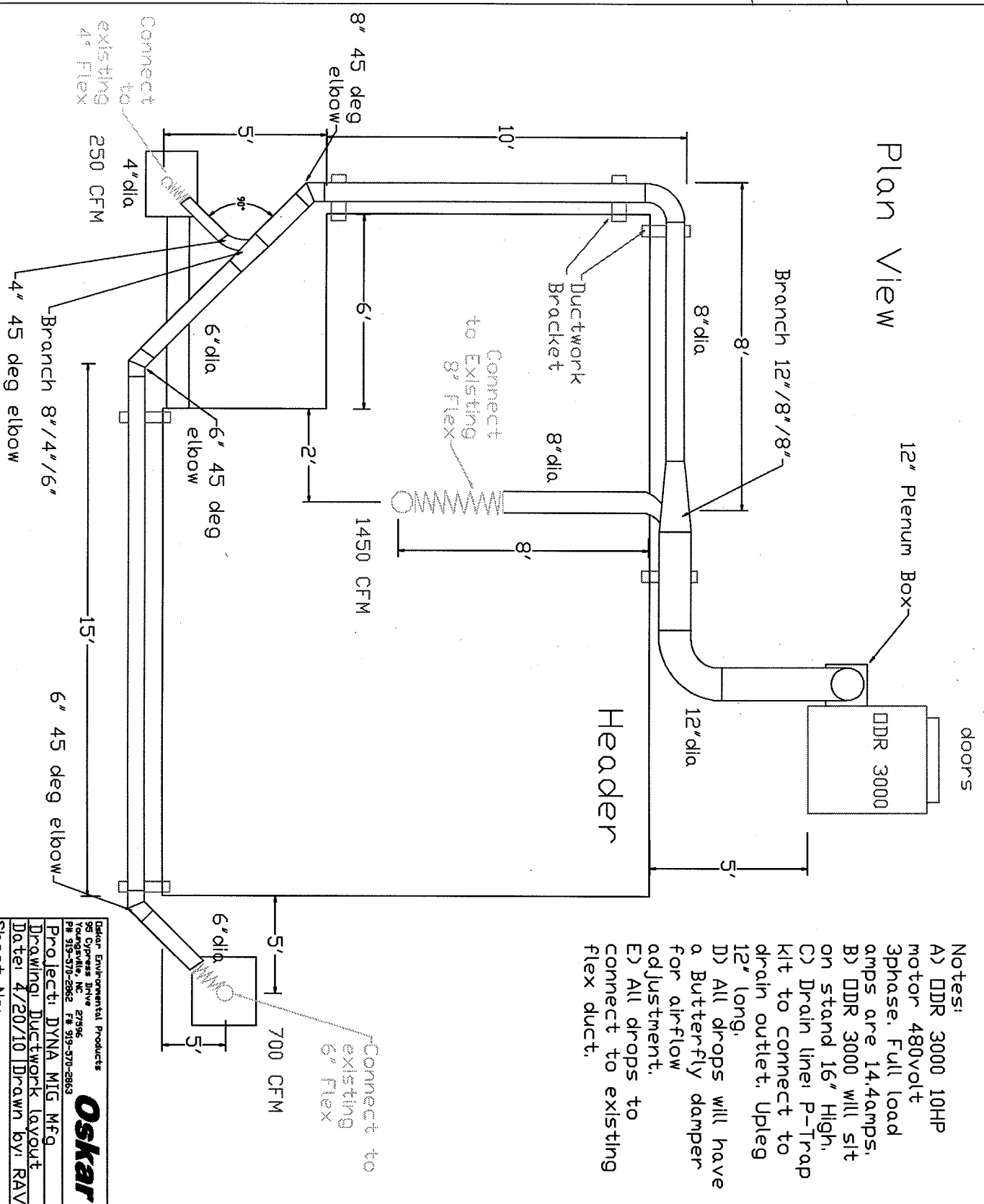


Ductwork Layout for DDR 3000

Plan View



- Notes:
- A) DDR 3000 10HP motor 480volt 3phase. Full load amps are 14.4amps.
 - B) DDR 3000 will sit on stand 16" High.
 - C) Drain line P-Trap kit to connect to drain outlet. Upleg 12" long.
 - D) All drops will have a Butterfly damper for air-flow adjustment.
 - E) All drops to connect to existing flex duct.

Dakar Environmental Products
 95 Cypress Drive 27906
 Raleighville, NC
 PH 315-576-8882 FX 315-576-8883

Oskar

Project: DYNA MIG Mfg
 Drawing: Ductwork layout
 Date: 4/20/10 Drawn by: RAV
 Sheet No:

O.K.
 [Signature]
 [Signature]
 Apr 28/10