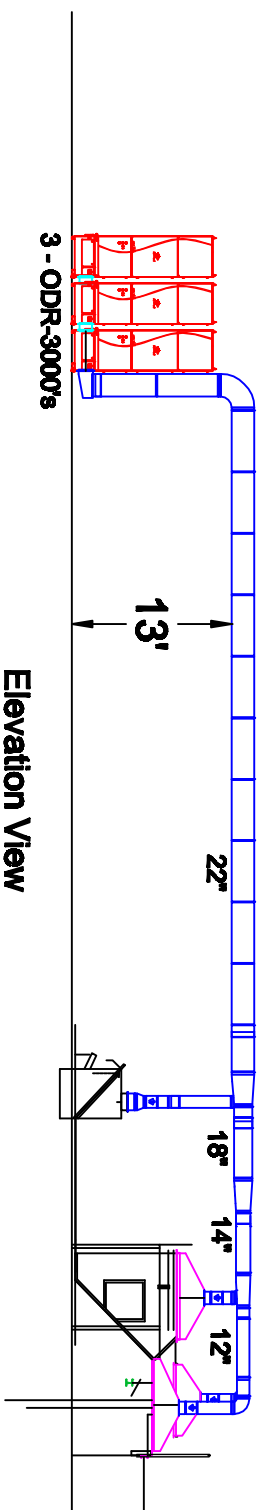
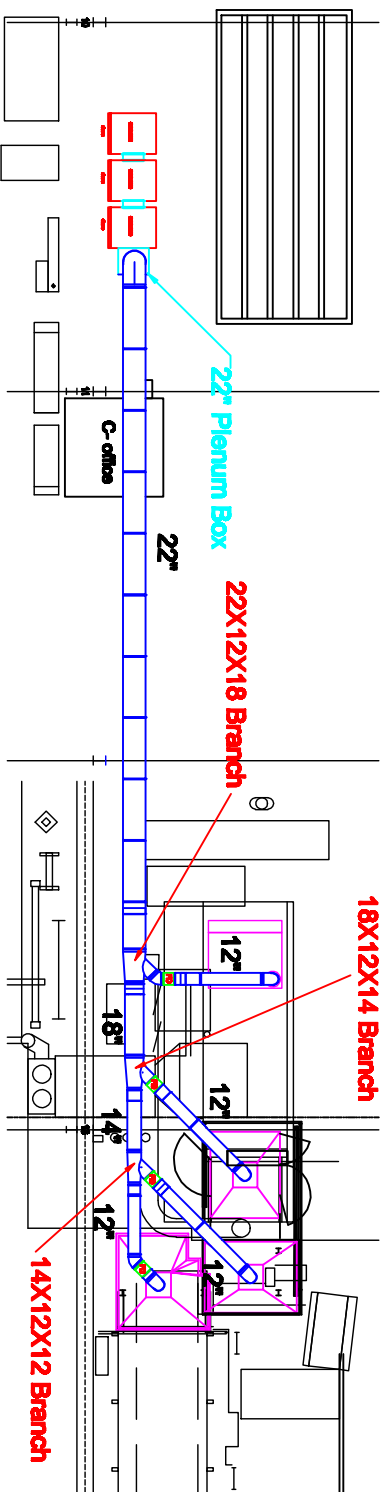


Duer Carolina Coil Line #2 Duct Layout

Plan View



Notes:

- 1) 3 - ODR-3000's are connected together using connection plenums.
- 2) All drops are 12" dia. and have a butterfly damper at each pick up point.
- 3) All drops have a 12" dia. Fire Damper at the connection to the main trunkline.

Avel Environmental Inc. 88 Cypress Dale Youngsville, NC 27588 PH: 919-322-2822 FX: 919-322-2822		
Project: Duer Carolina Coil		
Drawing: 2nd Line Duct Layout		
Date: 2/22/12	Drawn by: WWB	
Sheet No: 1	Rev.: 0	