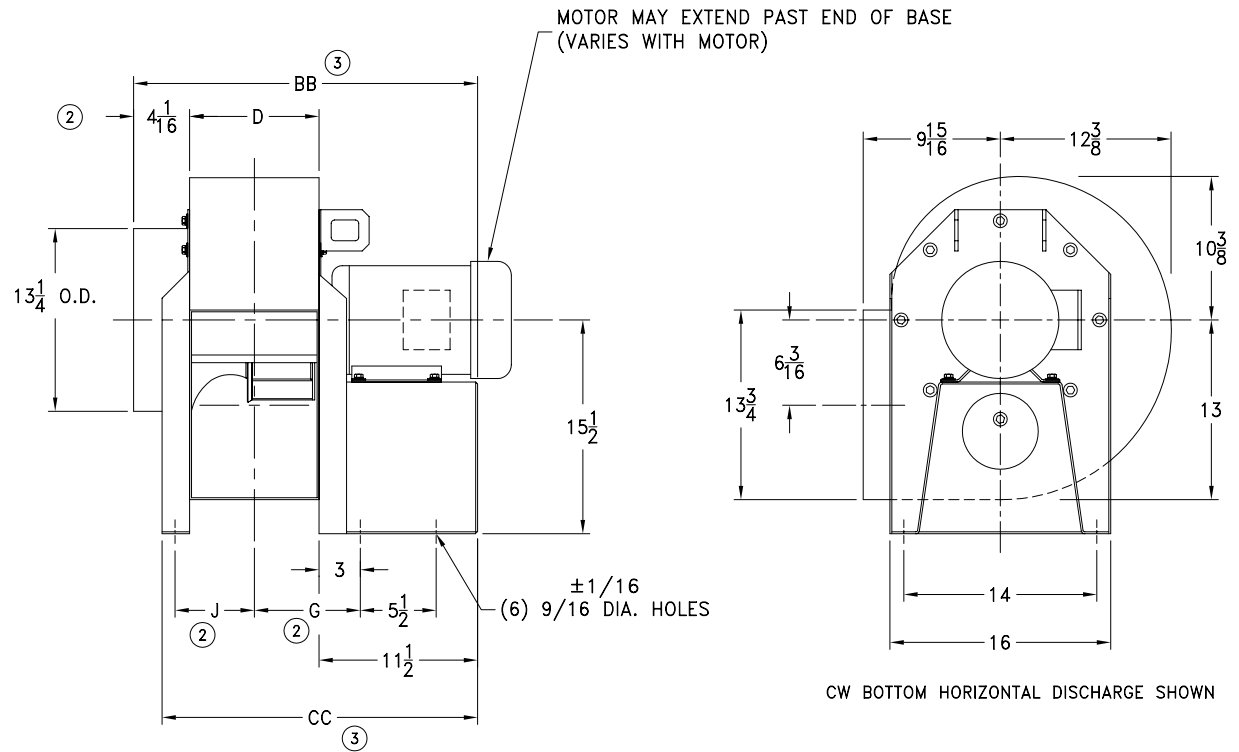
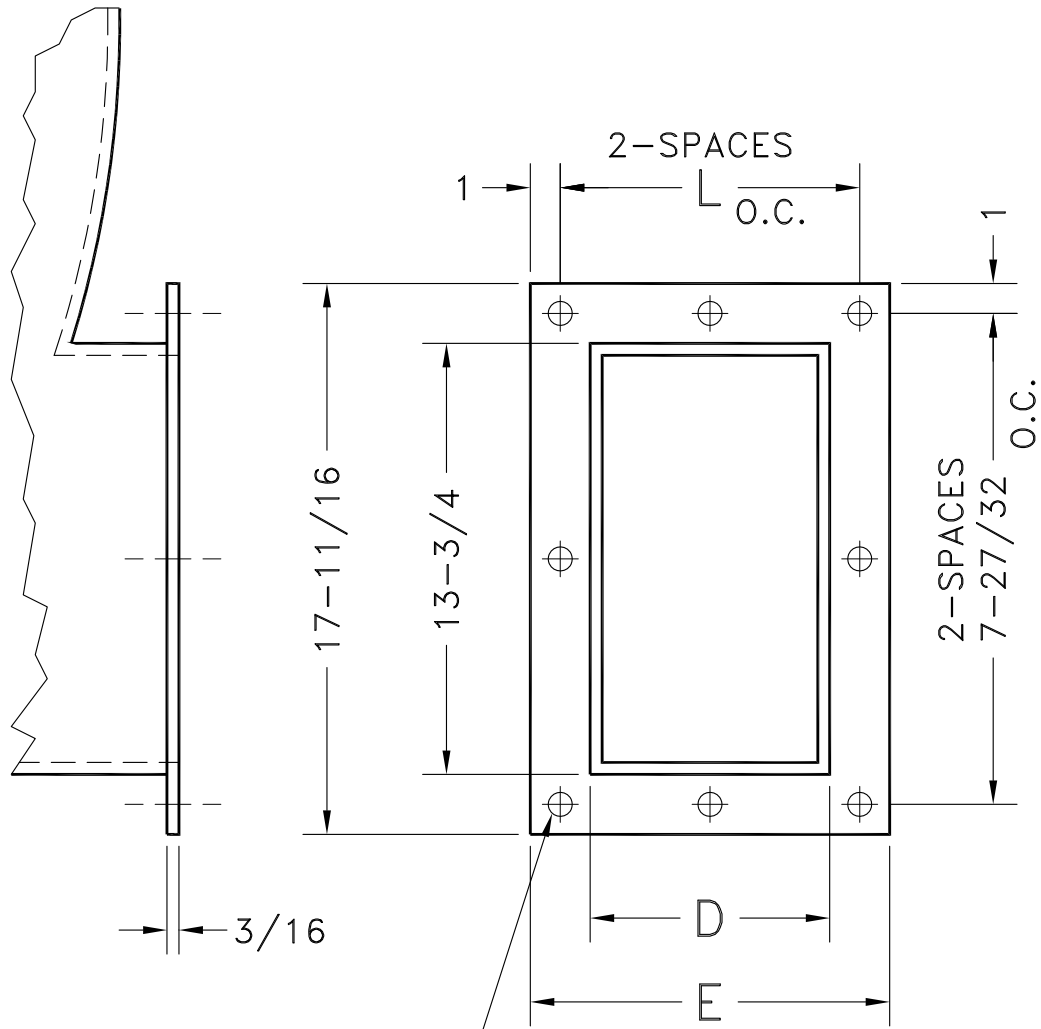


% WIDTH	D	② G	② J	STANDARD MOTOR FRAME: 143T-184T		
				③ BB	③ CC	WEIGHT *
100%	9 $\frac{3}{8}$	7 $\frac{11}{16}$	5 $\frac{3}{4}$	24 $\frac{15}{16}$	22 $\frac{15}{16}$	130
95%	9 $\frac{3}{16}$	7 $\frac{19}{32}$	5 $\frac{21}{32}$	24 $\frac{3}{4}$	22 $\frac{3}{4}$	129
90%	8 $\frac{15}{16}$	7 $\frac{15}{32}$	5 $\frac{17}{32}$	24 $\frac{1}{2}$	22 $\frac{1}{2}$	128
85%	8 $\frac{3}{4}$	7 $\frac{3}{8}$	5 $\frac{7}{16}$	24 $\frac{5}{16}$	22 $\frac{5}{16}$	127
80%	8 $\frac{1}{2}$	7 $\frac{1}{4}$	5 $\frac{5}{16}$	24 $\frac{1}{16}$	22 $\frac{1}{16}$	126
75%	8 $\frac{5}{16}$	7 $\frac{5}{32}$	5 $\frac{7}{32}$	23 $\frac{7}{8}$	21 $\frac{7}{8}$	125
70%	8 $\frac{1}{16}$	7 $\frac{1}{32}$	5 $\frac{3}{32}$	23 $\frac{5}{8}$	21 $\frac{5}{8}$	124
65%	7 $\frac{7}{8}$	6 $\frac{15}{16}$	5	23 $\frac{7}{16}$	21 $\frac{7}{16}$	123
60%	7 $\frac{5}{8}$	6 $\frac{13}{16}$	4 $\frac{7}{8}$	23 $\frac{3}{16}$	21 $\frac{3}{16}$	122
55%	7 $\frac{7}{16}$	6 $\frac{23}{32}$	4 $\frac{25}{32}$	23	21	121
50%	7 $\frac{3}{16}$	6 $\frac{19}{32}$	4 $\frac{21}{32}$	22 $\frac{3}{4}$	20 $\frac{3}{4}$	120



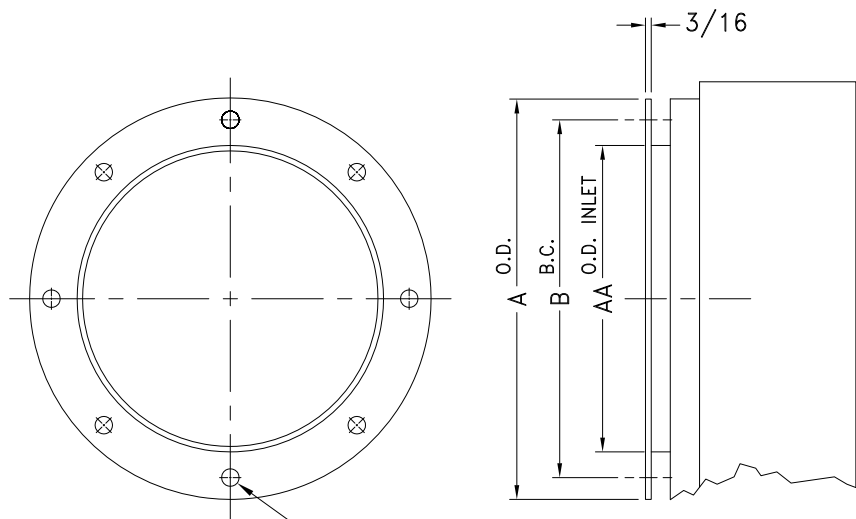
NOTES:

- FANS ARE ROTATABLE IN 45° INCREMENTS.
- ADD 1/8" FOR AMCA "C" CONSTRUCTION FANS AND/OR DOWNBLAST DISCHARGE POSITION.
- ADD 1/4" FOR AMCA "C" CONSTRUCTION FANS AND/OR DOWNBLAST DISCHARGE POSITION.
- * 4. WEIGHT DOES NOT INCLUDE MOTOR OR OPTIONS.

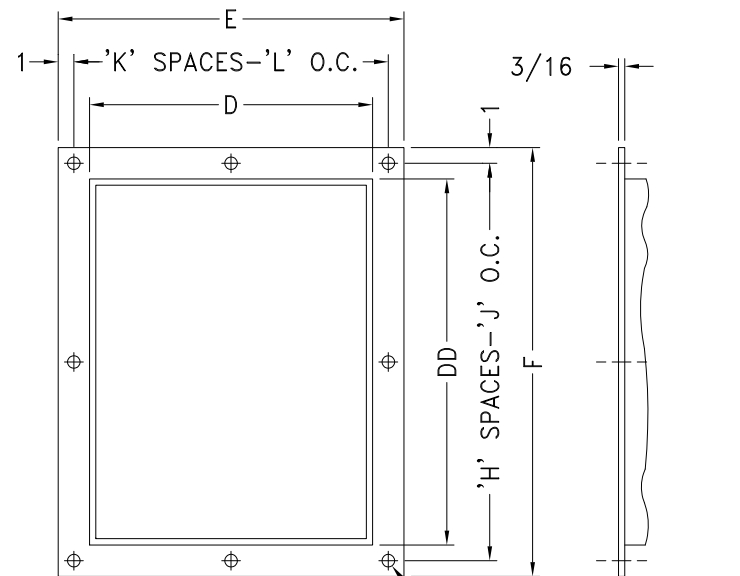


(8) 7/16 DIA. HOLES

% WIDTH	D	E	L
100	9-3/8	13-3/8	5-11/16
95	9-3/16	13-3/16	5-19/32
90	8-15/16	12-15/16	5-15/32
85	8-3/4	12-3/4	5-3/8
80	8-1/2	12-1/2	5-1/4
75	8-5/16	12-5/16	5-5/32
70	8-1/16	12-1/16	5-1/32
65	7-7/8	11-7/8	4-15/16
60	7-5/8	11-5/8	4-13/16
55	7-7/16	11-7/16	4-23/32
50	7-3/16	11-3/16	4-19/32
45	7	11	4-1/2



INLET FLANGE
"N" HOLES, "P" DIA.



DISCHARGE FLANGE ①
"M" 7/16 DIA. HOLES

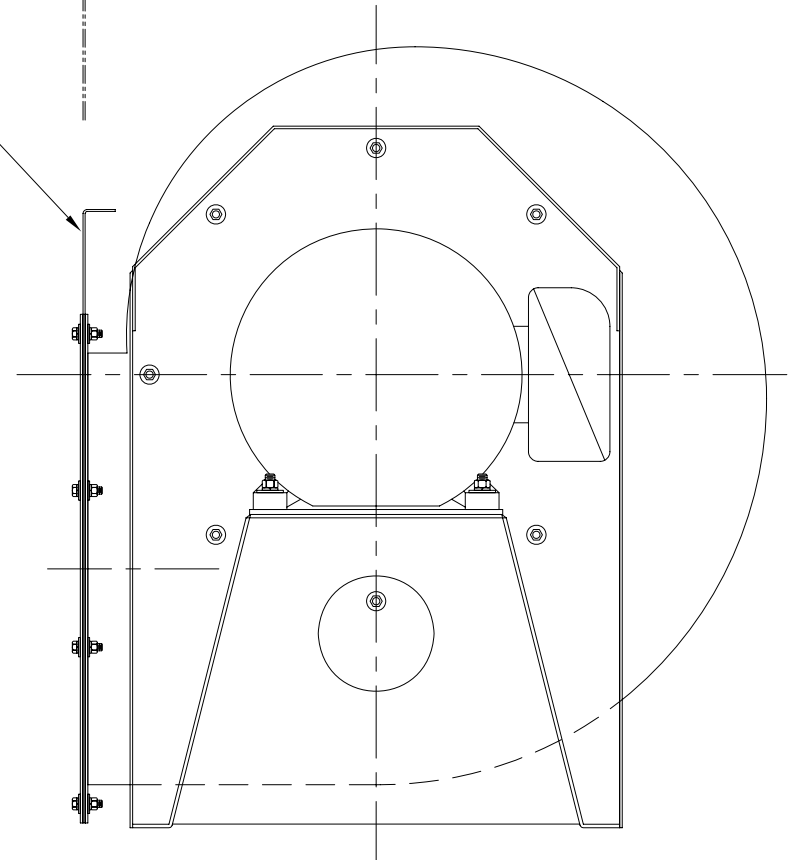
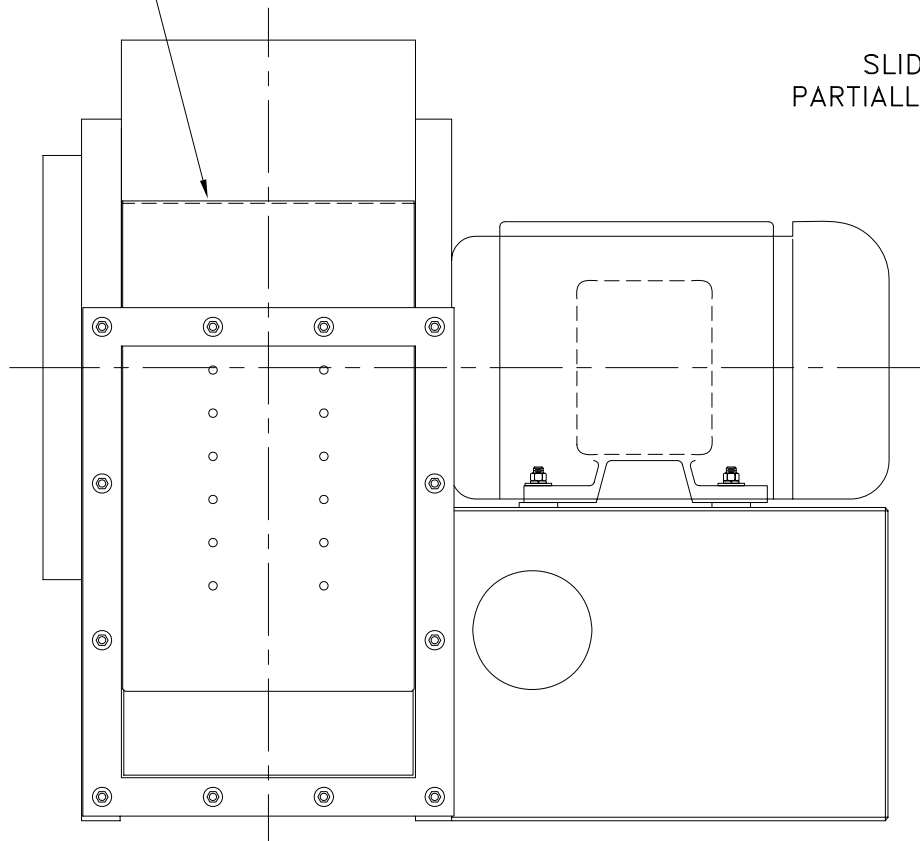
SIZE	INLET					DISCHARGE								
	A O.D.	B B.C.	N	AA DIA.	P	D	E	F	H	J	K	L	M	DD
120	16	14-3/8	8	13-1/4	7/16	9-3/8	13-3/8	17-11/16	2	7-27/32	2	5-11/16	8	13-3/4
130	17-3/4	15-15/16	8	14-5/8	7/16	10-3/8	14-3/8	19-3/16	2	8-19/32	2	6-3/16	8	15-1/4
150	19-1/4	17-1/2	8	16-1/8	7/16	11-3/8	15-3/8	20-3/4	3	6-1/4	2	6-11/16	10	16-13/16
160	21-1/8	19-3/8	8	18	7/16	12-1/2	16-1/2	22-7/16	3	6-13/16	2	7-1/4	10	18-7/16
180	23-1/2	21-1/2	12	20	7/16	13-7/8	17-7/8	24-1/2	3	7-1/2	2	7-15/16	10	20-3/8
200	25-1/2	23-1/2	12	22	7/16	15-1/4	19-1/4	26-3/8	3	8-1/8	3	5-3/4	12	22-3/8
220	28-1/8	26-1/8	12	24-5/8	7/16	16-7/8	20-15/16	28-7/8	4	6-23/32	3	6-5/16	14	24-7/8
240	30-3/4	28-3/4	16	27	7/16	18-9/16	22-5/8	31-3/8	4	7-11/32	3	6-7/8	14	27-3/8
270	33-3/4	31-5/8	16	30	7/16	20-7/16	24-1/2	34-1/8	4	8-1/32	3	7-1/2	14	30-1/16
300	37-1/4	35-1/4	16	33-1/2	7/16	22-3/4	26-3/4	37-5/8	5	7-1/8	3	8-1/4	16	33-9/16
330	40-3/8	38-3/4	16	36-3/4	1/2	24-7/8	28-7/8	40-7/8	7	5-9/16	5	5-3/8	24	36-3/4
360	43-5/8	42	16	40	1/2	27-1/4	31-1/4	44-1/4	7	6-1/32	5	5-27/32	24	40-1/4

NOTE:
① NOT AVAILABLE ON ANY MODEL FOR DOWNBLAST, BOTTOM ANGULAR DOWN OR TOP ANGULAR DOWN DISCHARGE POSITIONS.
DISCHARGE FLANGE IS STANDARD ON SIZES -270 THRU -360.

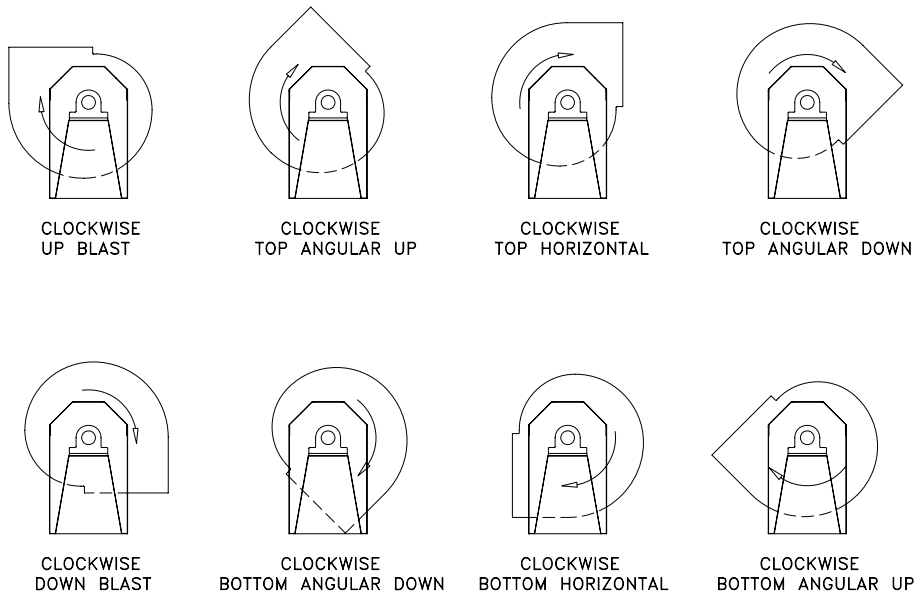
SLIDE GATE DAMPER
(SHOWN PARTIALLY OPEN)

SLIDE GATE
FULLY OPEN

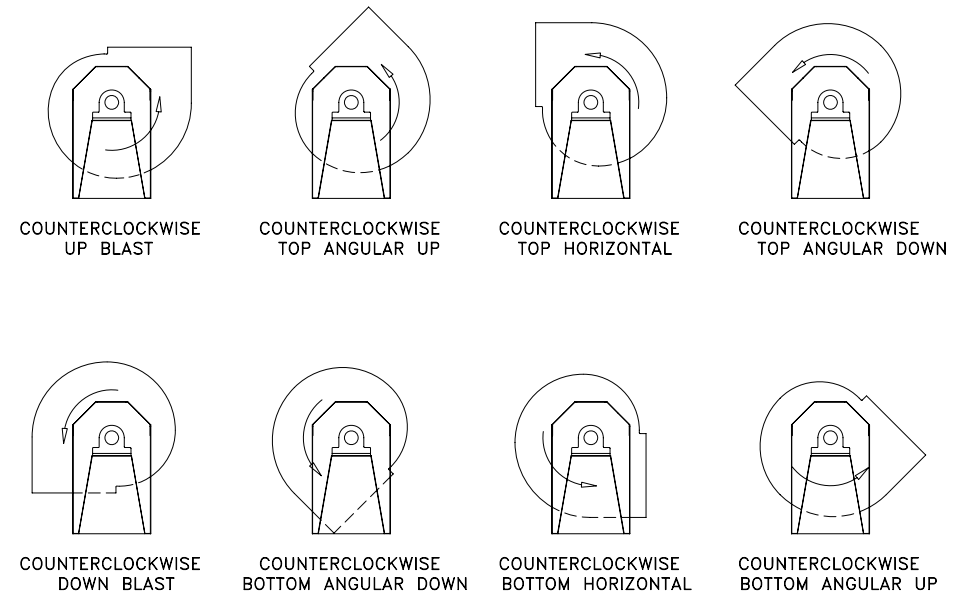
SLIDE GATE
PARTIALLY OPEN



CLOCKWISE ROTATION



COUNTERCLOCKWISE ROTATION



- NOTES:
1. DIRECTION OF ROTATION IS DETERMINED FROM DRIVE SIDE OF FAN.
 2. SAME AS AMCA STANDARD 99-2406-83.