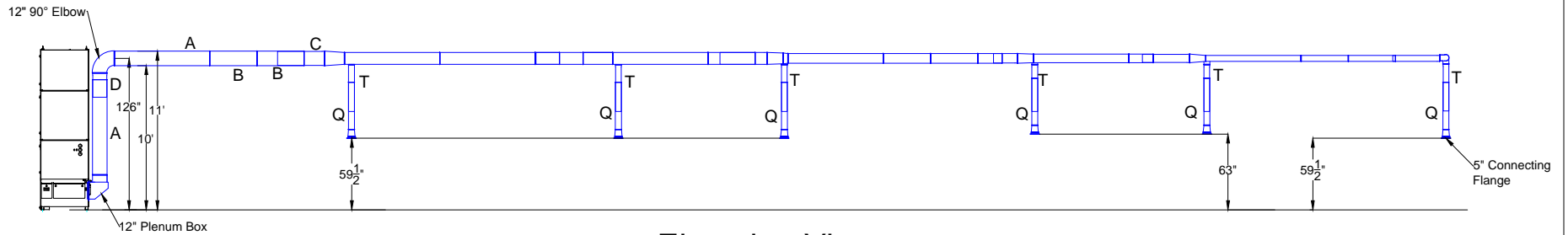
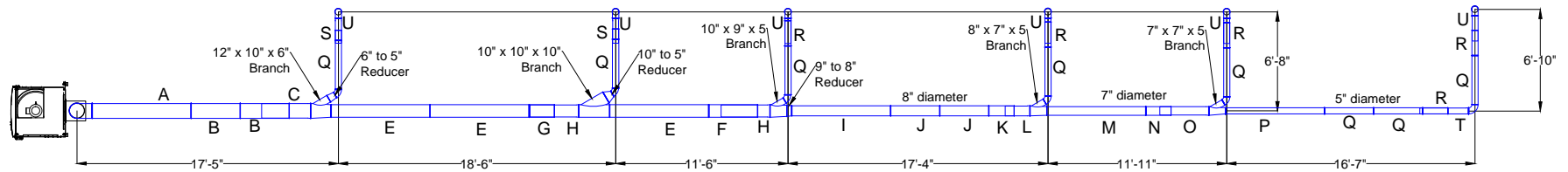


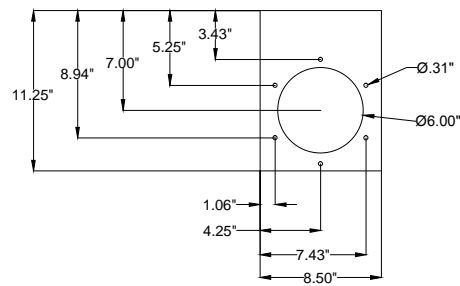
Hydromat - SO19330



Elevation View



Plan View



Pick-up View

Inventory

- | | |
|---------------------------|--------------------------|
| A. Ø12" 2000 mm tube | K. Ø8" 500 mm tube |
| B. Ø12" 1000 mm tube | L. Ø8" 500 mm slip tube |
| C. Ø12" 1000 mm slip tube | M. Ø7" 2000 mm tube |
| D. Ø12" 500 mm slip tube | N. Ø7" 500 mm tube |
| E. Ø10" 2000 mm tube | O. Ø7" 1000 mm slip tube |
| F. Ø10" 1000 mm tube | P. Ø5" 2000 mm tube |
| G. Ø10" 500 mm tube | Q. Ø5" 1000 mm tube |
| H. Ø10" 1000 mm slip tube | R. Ø5" 500 mm tube |
| I. Ø8" 2000 mm tube | S. Ø5" 200 mm tube |
| J. Ø8" 1000 mm tube | T. Ø5" 1000 mm slip tube |
| | U. Ø5" 500 mm slip tube |

Notes:

1. Jacobs tubing duct
2. Collector is an ODR-3000
3. Pickup shown, will connect to with Machine Adaptor

Avani Environmental Intl. Inc.
95 Cypress Drive
Youngsville, NC 27596
P# 919-488-2862 F# 919-488-2863

Avani

Project: HYDROMAT - SO19330

Drawing: DUCT LAYOUT

Date: 1/31/13

Drawn by: MDT

Sheet No: 1 OF 1

Rev: 3