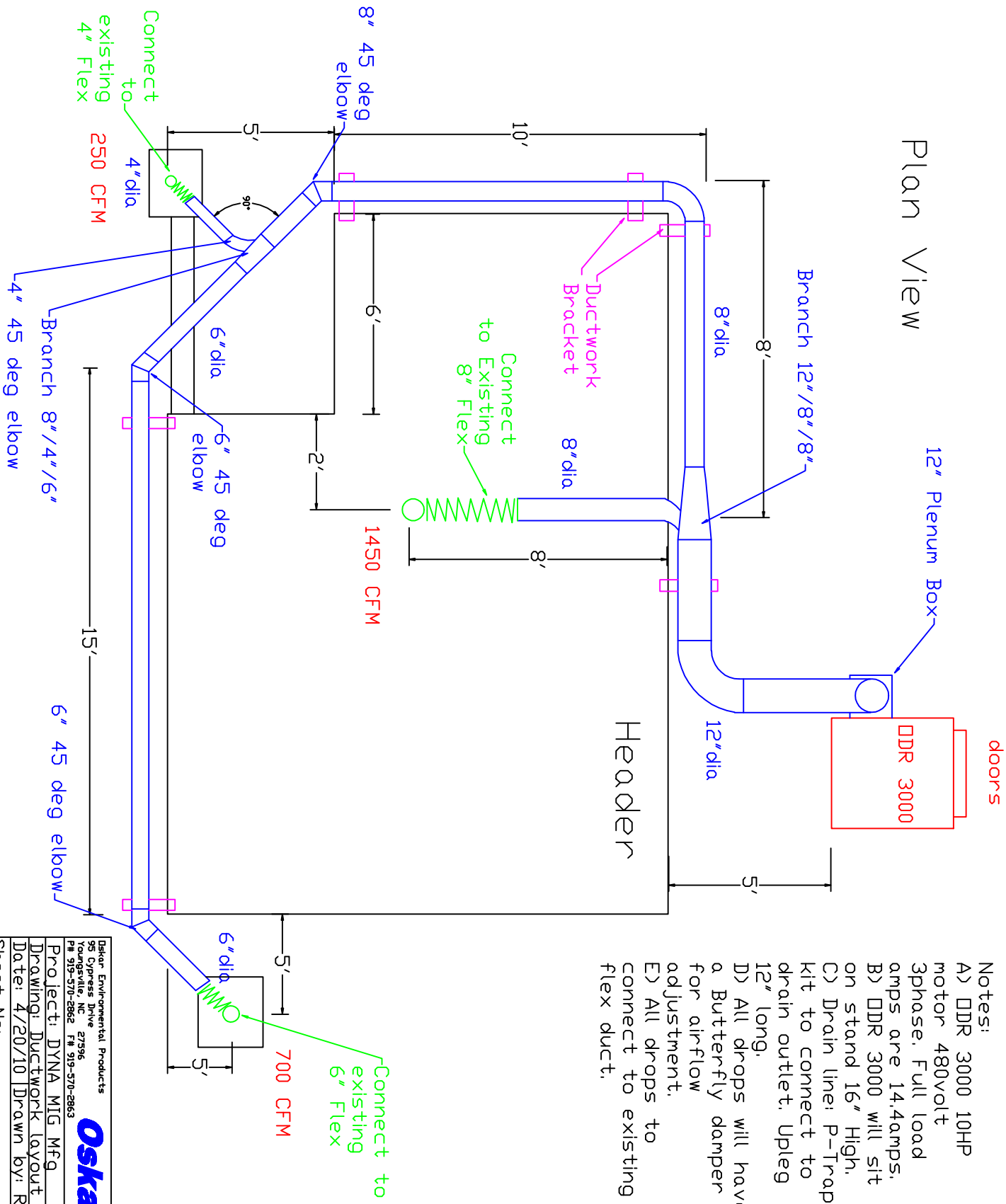


Ductwork Layout for DDR 3000

Plan View



- Notes:
- A) DDR 3000 10HP motor 480volt 3phase. Full load amps are 14.4amps.
 - B) DDR 3000 will sit on stand 16" High.
 - C) Drain line: P-Trap kit to connect to drain outlet. Upleg 12" long.
 - D) All drops will have a Butterfly damper for air-flow adjustment.
 - E) All drops to connect to existing flex duct.

Dskar Environmental Products
 95 Cypress Drive
 Youngsville, NC 27396
 P# 919-570-2862 F# 919-570-2863

Project: DYNA MIG Mfg
 Drawing: Ductwork layout
 Date: 4/20/10 Drawn by: RAW

Oskar

Sheet No: