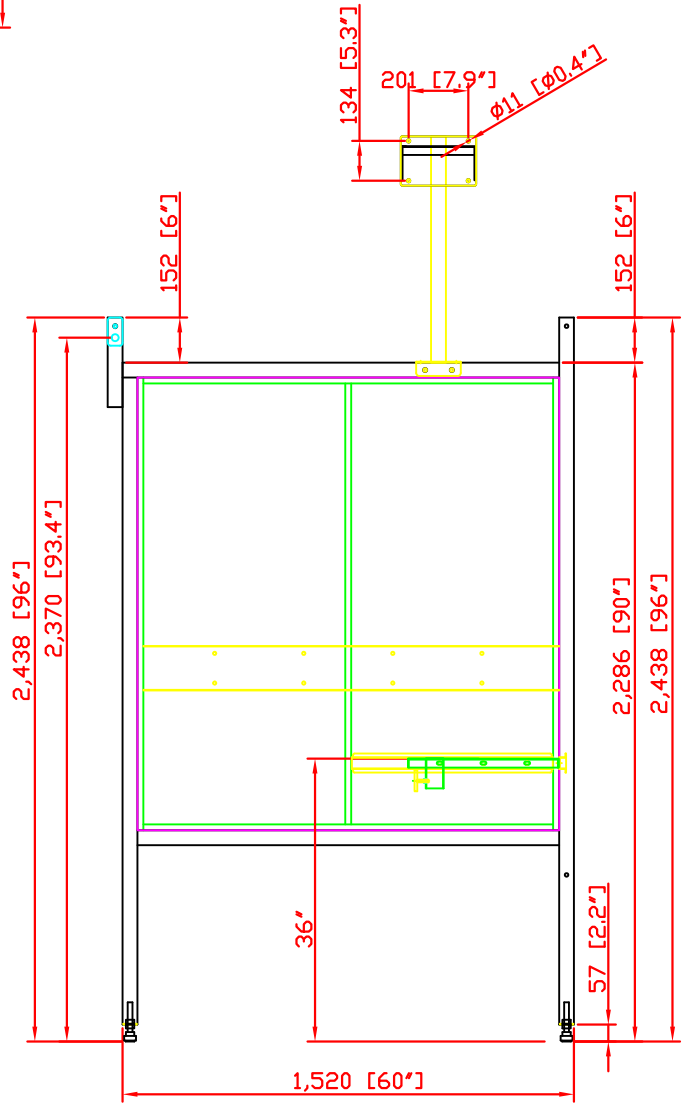
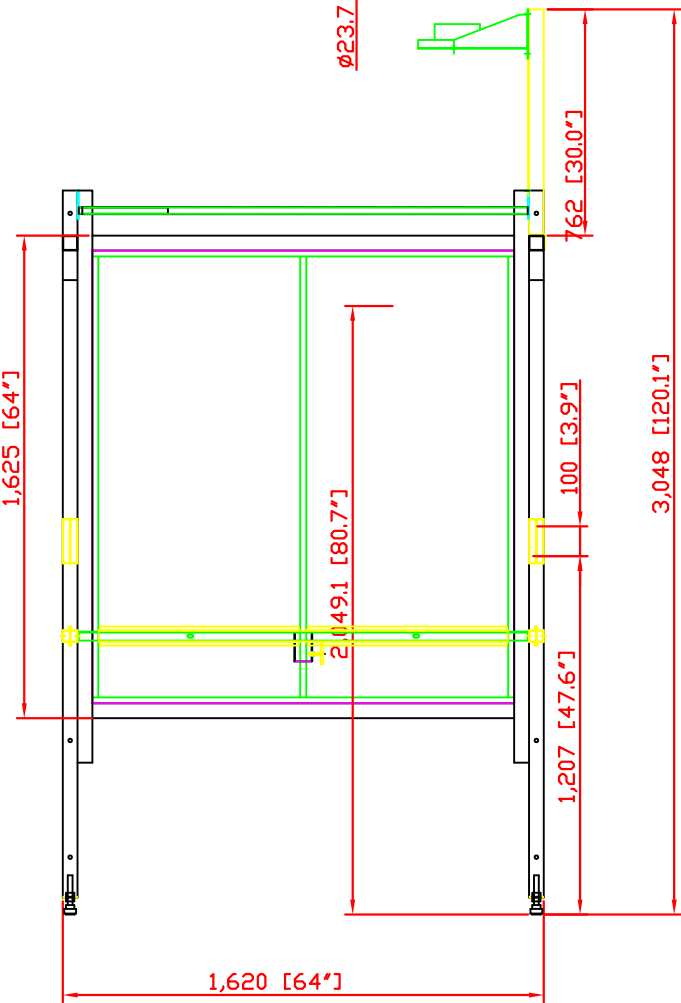
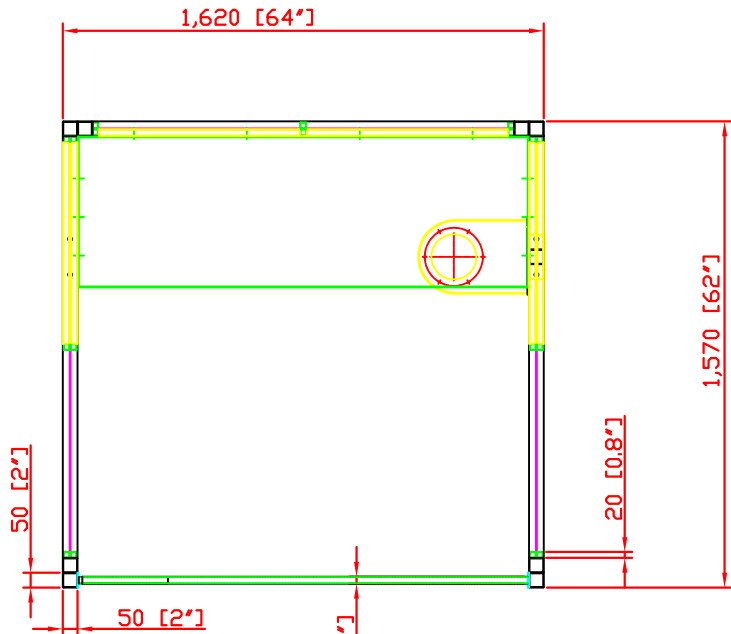


Rev	Description	Date	Approved

WB-1000 WELDING BOOTH SPECIFICATIONS

- Adjustable Level System: (4) dia. 2.36" Feet
- Panel Construction: 12-gauge welded steel
- Welding Curtain Supports: (1) set welding curtain bar 1/2" dia.
- Fume Arm Supports & Brackets: (1) bracket (6 bolt pattern)
- Powder Coated: Avani Safety Blue Standard (custom colors)
- ***Unadjustable Fixed Rear Shelf: 60"W x 20"D x 1.1"H - 36" from floor to top of shelf.



PRODUCED BY AN AUTODESK EDUCATIONAL PRODUCT

PRODUCED BY AN AUTODESK EDUCATIONAL PRODUCT

AVANI ENVIRONMENTAL INTL. INC. Sales Department
 95 Cypress Drive (919) 570-2862
 Youngsville, NC 27596 info@avanienvironmental.com

Drawn by:	2011-07-02	Name	***
Checked by:		Part Number:	***

Title:	Welding Booth WB-1000
--------	-----------------------

The drawings, AutoCAD, 3-D Models, and specifications are the property of Avani Environmental Intl. Inc. (AE) and may not be reproduced, distributed, modified, or otherwise used without prior written permission of Avani Environmental Intl. Inc.		Size	Scale	Drawing Number:
				WB-5x5S