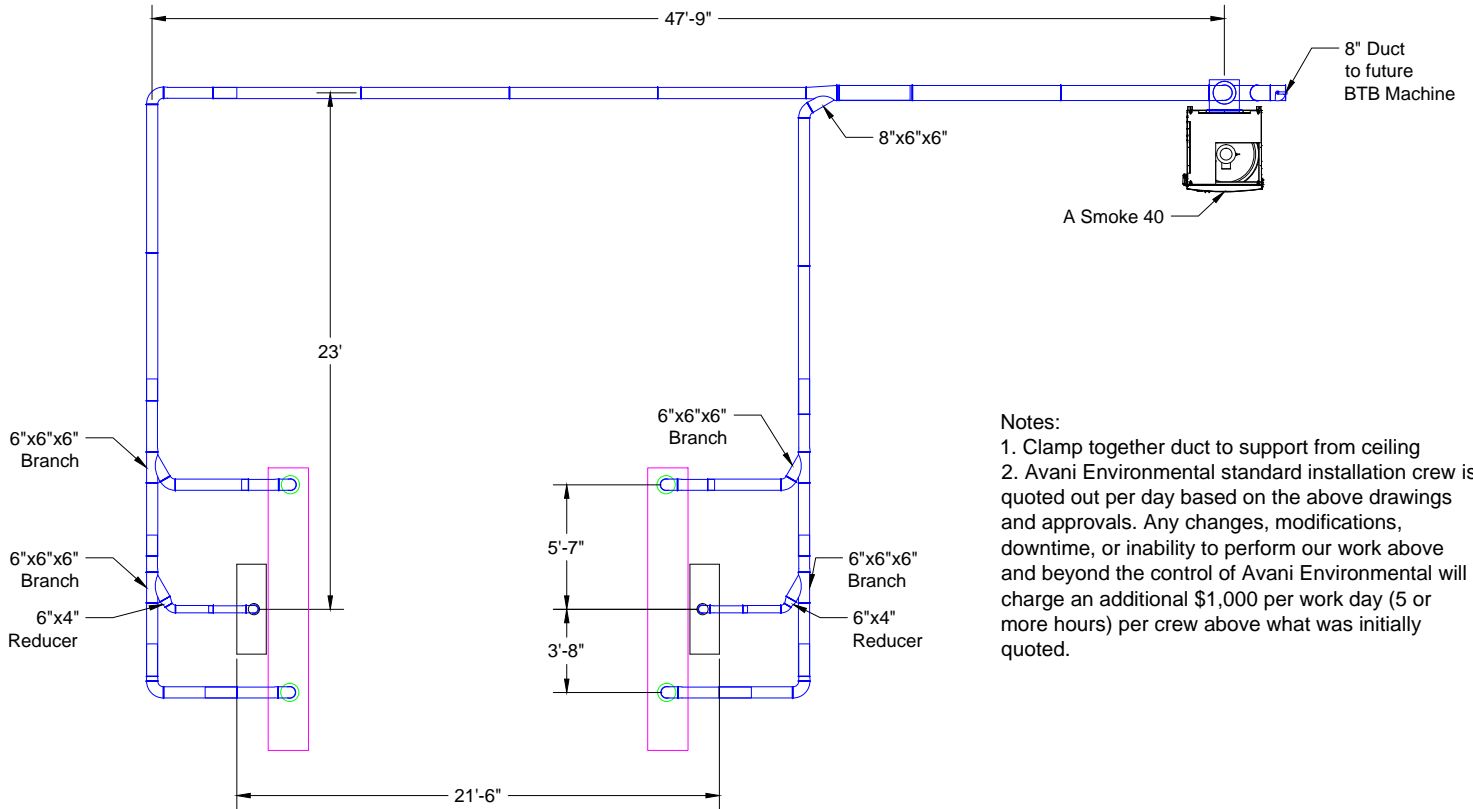
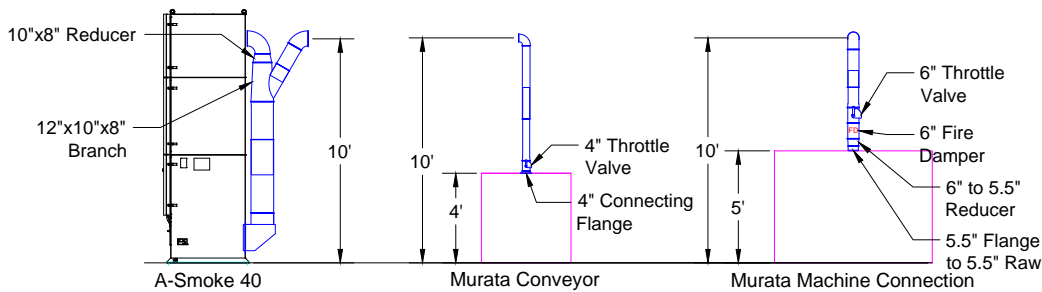


Curtis Screw SO21348 Duct Layout



- Notes:**
1. Clamp together duct to support from ceiling
 2. Avani Environmental standard installation crew is quoted out per day based on the above drawings and approvals. Any changes, modifications, downtime, or inability to perform our work above and beyond the control of Avani Environmental will charge an additional \$1,000 per work day (5 or more hours) per crew above what was initially quoted.

Plan View



Elevation View

Avani Environmental Intl. Inc.
95 Cypress Drive
Youngsville, NC 27596
P# 919-570-2862 F# 919-570-2863

Avani

Project: Curtis Screw SO21348

Drawing: Duct Layout

Date: 5/27/14

Drawn by: MDT

Sheet No: 1 OF 1

Rev 0