

## RC-05 Machine Assembly Procedures

【Refer to Decomposed Drawing & each carton is labeled with a REF. NO】

November 5, 2008

### ◆ Assembly Procedures: Filter Section

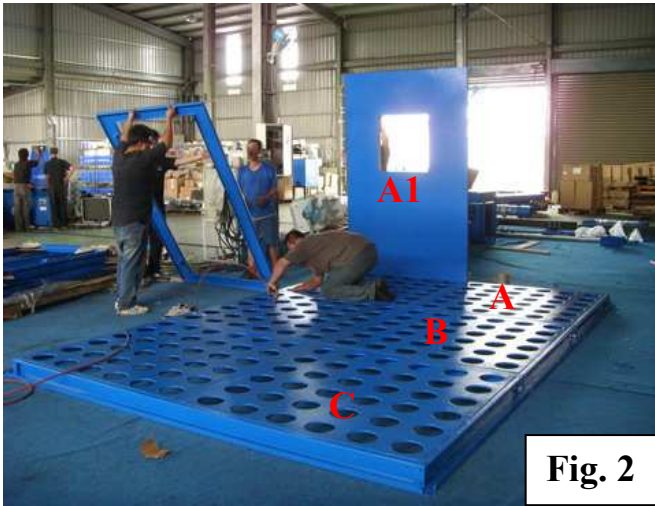


Fig. 1

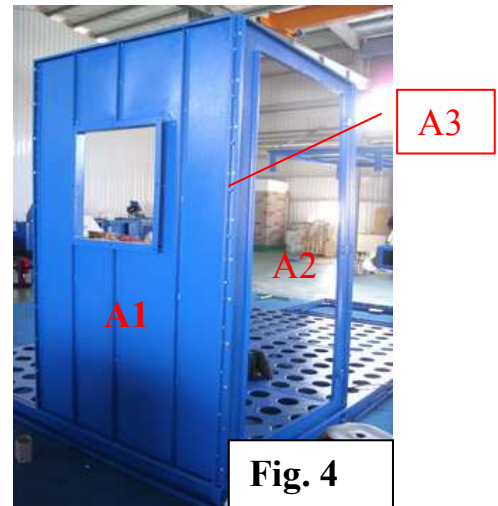
[ 1 ] Place Lower Filter Frames A, B and C in order like Fig. 1.



[ 2 ] Use (60) pcs of 5/16"×3/4 Hex Screw and  
(120) pcs of 5/16"×OD18×2t Flat Washer and  
(60) pcs of 5/16" Hex Nut to fasten the frames.



- [ 3 ] Use (7) pcs of 5/16"×3/4" Hex Screws and (7) pcs of 5/16"×OD18\*2t Flat Washers to fasten A1 to Frame A, as shown in Fig. 2.



- [ 4 ] Use (6) pcs of 5/16"×3/4" Hex Screw and (6) pcs of 5/16"×OD18\*2t Flat Washer to fasten A2 to the position shown in Fig. 3.
- [ 5 ] Use (21) pcs of 5/16"×3/4" Hex Screw, (42) pcs of 5/16"×OD18\*2t Flat Washer and (21) pcs of Hex Screws to fasten A3 between A1 & A2, like shown in Fig. 4.



【A3、A6、C3、C6 are the Door Connecting Shaft】

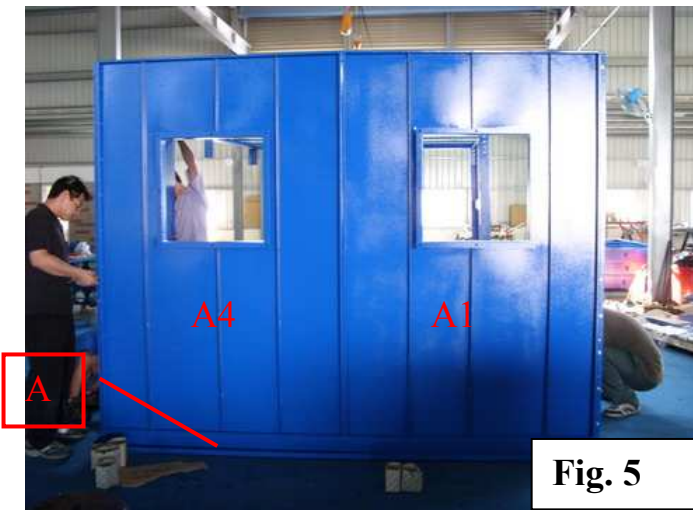


Fig. 5

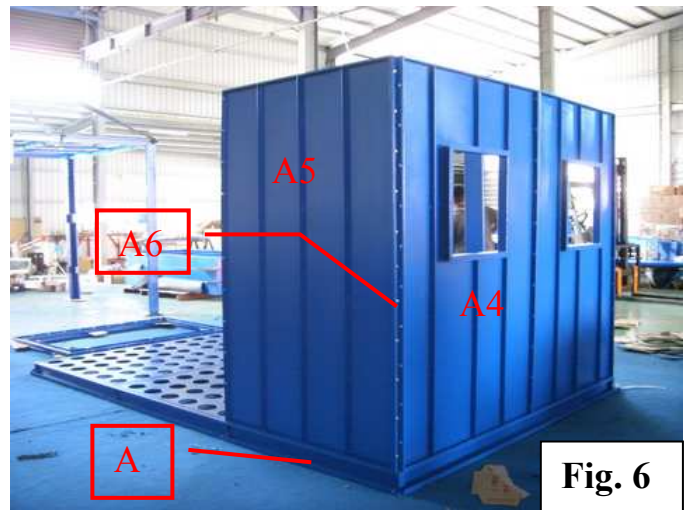
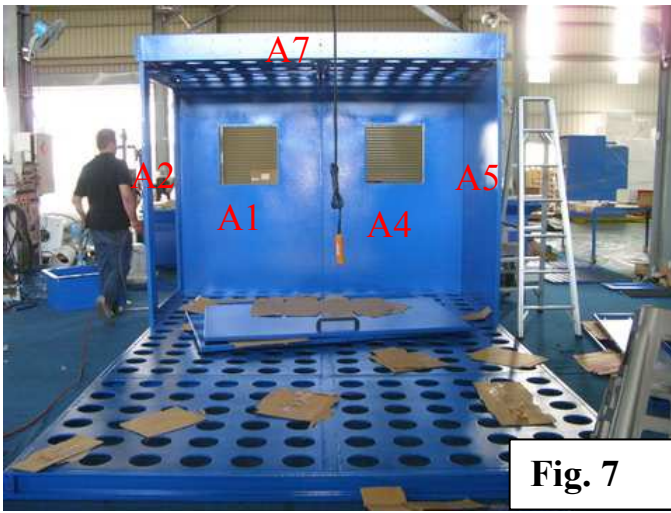


Fig. 6

- [ 6 ] Use (17) pcs of 5/16"×3/4" Hex Screw,  
(34) pcs of 5/16"×OD18\*2t Flat Washer and  
(17) pcs of 5/16" Hex Nut to fasten A4 between A and A1, as shown in Fig. 5.
- [ 7 ] Use (6) pcs of 5/16"×3/4" Hex Screw and  
(6) pcs of 5/16"×OD18\*2t Flat Washer to fasten A5 to Frame A, as shown in Fig. 6.
- [ 8 ] Use (21) pcs of 5/16"×3/4" Hex Screw,  
(42) pcs of 5/16"×OD18\*2t Flat Washer and  
(21) pcs of 5/16" Hex Nut to fasten A6 between A4 and A5, as shown in Fig. 6.



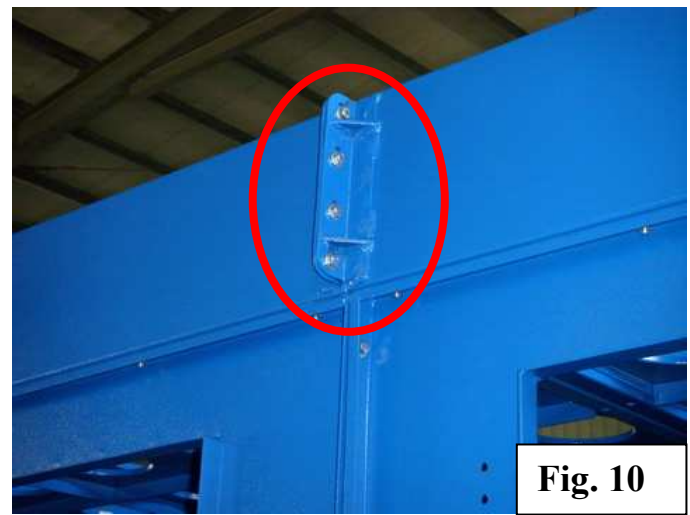
- [ 9 ] Use (26) pcs of 5/16"×3/4" Hex Screw,  
(52) pcs of 5/16"×OD18\*2t Flat Washer and  
(26) pcs of 5/16" Hex Nut to fasten A7 above A1, A2, A4 and A5, as shown in Fig. 7.



- [ 10 ] Fasten B1 and B2 to Frame B with (6) pcs of 5/16"×3/4" Hex Screw and  
(6) pcs of 5/16"×OD18\*2t Flat Washer, as shown in Fig. 8.



**Fig. 9**



**Fig. 10**

[ 11 ] Use (12) pcs of 5/16"×3/4" Hex Screw,  
 (24) pcs of 5/16"×OD18\*2t Flat Washer and  
 (12) pcs of 5/16" Hex Nut to fasten B3 above B1 and B2, as shown in Fig. 9.

[ 12 ] Use (26) pcs of 3/8"×3/4" Hex Screw,  
 (52) pcs of 3/8"×OD23\*2t Flat Washer and  
 (26) pcs of 3/8" Hex Nut to fasten between A7 and B3.

Use (8) pcs of 3/8"×3/4" Hex Screw,  
 (16) pcs of 3/8"×OD23\*2t Flat Washer and  
 (8) pcs of 3/8" Hex Nut to fasten the Front and End Section, as shown in Fig. 10.



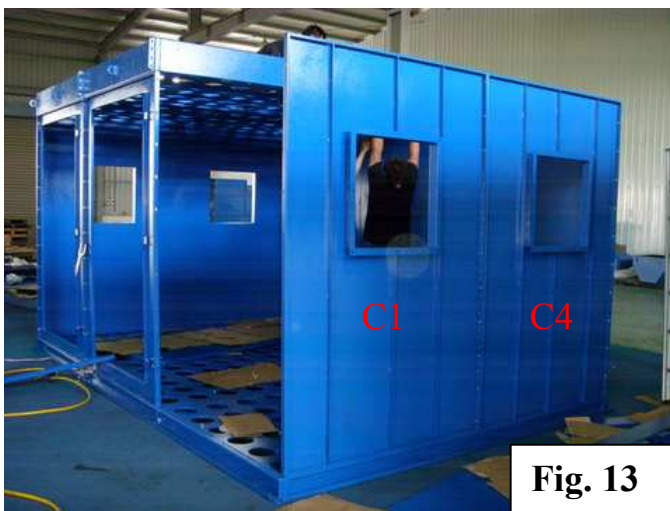
**Fig. 11**



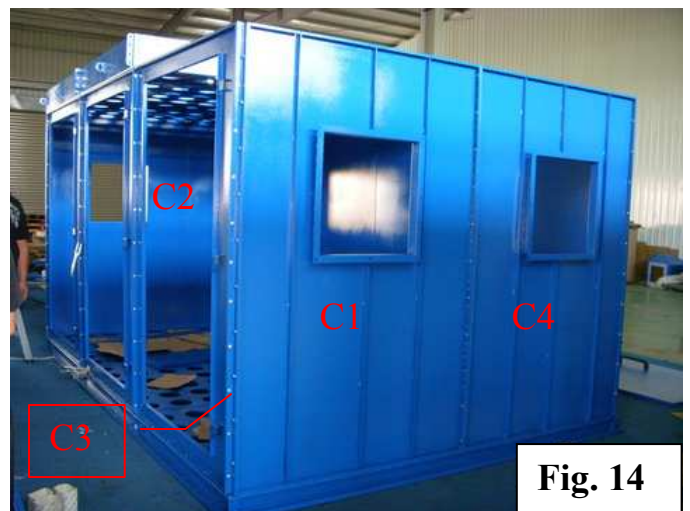
**Fig. 12**

[ 13 ] Use (11) pcs of 5/16"×3/4" Hex Screw,  
 (22) pcs of 5/16"×OD18\*2t Flat Washer and  
 (11) pcs of 5/16" Hex Nut to fasten C5 with B2, as shown in Fig. 11.

[ 14 ] Use (21) pcs of 5/16"×3/4" Hex Screw,  
 (42) pcs of 5/16"×OD18\*2t Flat Washer and  
 (21) pcs of 5/16" Hex Nut to fasten C6 between C4 and C5, as shown in Fig. 12.



**Fig. 13**



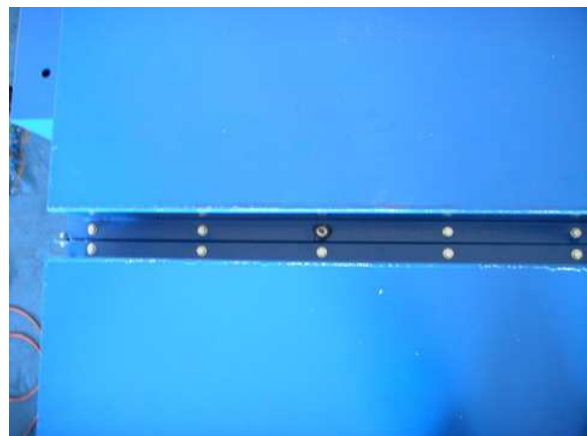
**Fig. 14**

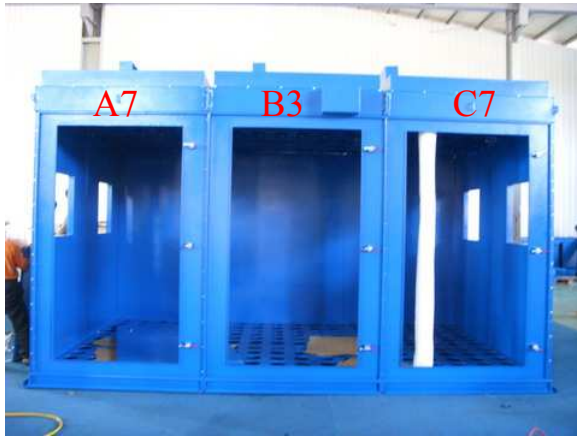
[ 15 ] Use (11) pcs of 5/16"×3/4" Hex Screw,  
 (22) pcs of 5/16"×OD18\*2t Flat Washer and  
 (11) pcs of 5/16" Hex Nut to fasten C1 with C4, as shown in Fig. 13.

[ 16 ] Use (21) pcs of 5/16"×3/4" Hex Screw,  
 (42) pcs of 5/16"×OD18\*2t Flat Washer and  
 (21) pcs of 5/16" Hex Nut to fasten C3 between C1 and C2, as shown in Fig. 14.



- [ 17 ] Use (26) pcs of 5/16"×3/4" Hex Screw,  
 (52) pcs of 5/16"×OD18\*2t Flat Washer and  
 (26) pcs of 5/16" Hex Nut to fasten C7 above C1, C2, C4 and C5, as shown in Fig. 15.
- [ 18 ] Use (26) pcs of 3/8"×3/4" Hex Screw,  
 (52) pcs of 3/8"×OD23\*2t Flat Washer and  
 (26) pcs of 3/8" Hex Nut to fasten between C7 and B3.
- [ 19 ] Use (8) pcs of 3/8"×3/4" Hex Screw,  
 (16) pcs of 3/8"×OD23\*2t Flat Washer and  
 (8) pcs of 3/8" Hex Nut to fasten the Front and End Section, as shown in Fig. 15.





[ 20 ] Use (120) pcs of 5/16"×3/4" Hex Screw and (120) pcs of 5/16"×OD18\*2t Flat Washer to fasten (3) Upper Cover above A7, B3 and C7.

**Note: Watch the direction of Upper Covers when assembling.**



[ 21 ] Use (6) pcs of 3/8"×1-1/4" Philips Head Screw to fasten (3) Plastic Handles on A2, B1 and C2.



[ 21 ] Use (4) pcs of 3/16"×5/8" Philips Head Screw, (4) pcs of 3/16"×OD12\*1t Flat Washer and (4) pcs of 3/16" Hex Nut to fasten the Fast Clamps to the Door Edges of A2, B1 and C2; total (9) sets.





[ 22 ] Assembly of Filter Section is completed.

◆ **Assembly Procedures: Hopper Section**



**Fig. 1**

[ 1 ] Place the Frames of Hopper Section D1, E1 and E1 in order like Fig. 1.



[ 2 ] Use (52) pcs of 3/8"\*3/4" Hex Screw,  
(104) pcs of 3/8"\*OD23\*2t Flat Washer and  
(52) pcs of 3/8" Hex Screw to fasten the frames.



[ 3 ] Hang the Frame after assembly.



[ 4 ] Use (8) pcs of 1/2"×1-3/4" Hex Screw,  
 (16) pcs of 1/2"×OD25×2t Flat Washer and  
 (8) pcs of 1/2" Hex Nut to fasten Stands 【G1, G2, H1, H2, I1 and I2】 to the main frame of Hopper Section.



**Horizontal Shafts  
 (Left & Right)**

**Stand Strengthening  
 Shafts**

**Fig. 2**



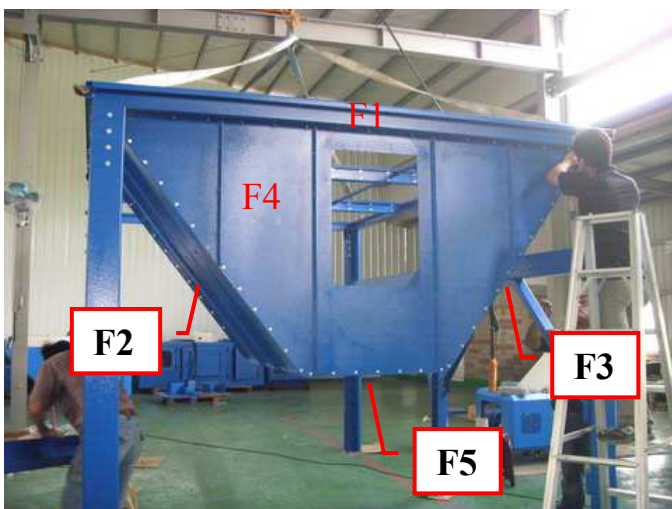
[ 5 ] Use (16) pcs of 3/8"×3/4" Hex Screw,  
 (32) pcs of 3/8"×OD23×2t Flat Washer and  
 (16) pcs of 3/8" Hex Nut to fasten the Horizontal Shafts between the Stands. Total (4) pcs,  
 as shown in Fig. 2.

- [ 6 ] Use (32) pcs of 3/8"×3/4" Hex Screw,  
 (64) pcs of 3/8"×OD23×2t Flat Washer and  
 (32) pcs of 3/8" Hex Nut to fasten the Stand Strengthening Shafts between the Stands and  
 the Horizontal Shafts. Total (8) pcs, as shown in Fig. 2.

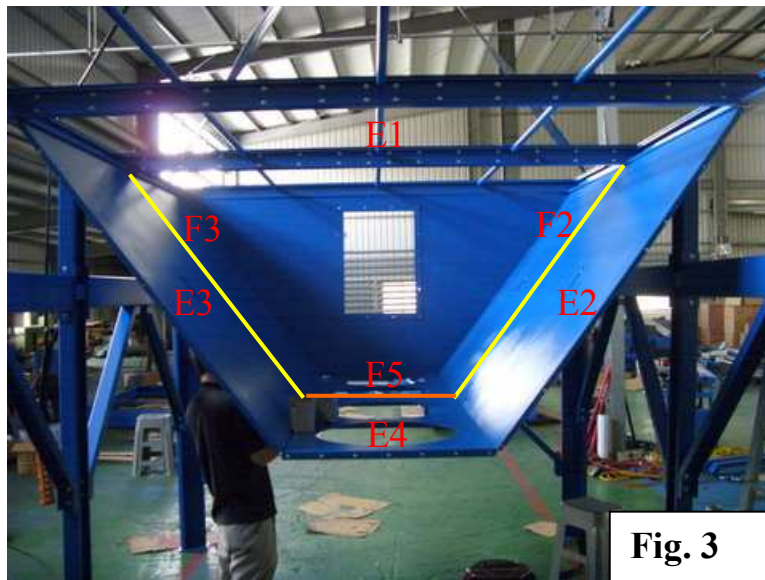


- [ 7 ] Use (20) pcs of 5/16"×3/4" Hex Screw and  
 (20) pcs of 5/16"×OD18×2t Flat Washer to fasten the Upper Edge of F2 and F3 to the main  
 frame of Filter Section.

- [ 8 ] Use (22) pcs of 5/16"×3/4" Hex Screw,  
 (44) pcs of 5/16"×OD18×2t Flat Washer and  
 (22) pcs of 5/16" Hex Nut to fasten F5 to F2 and F3.

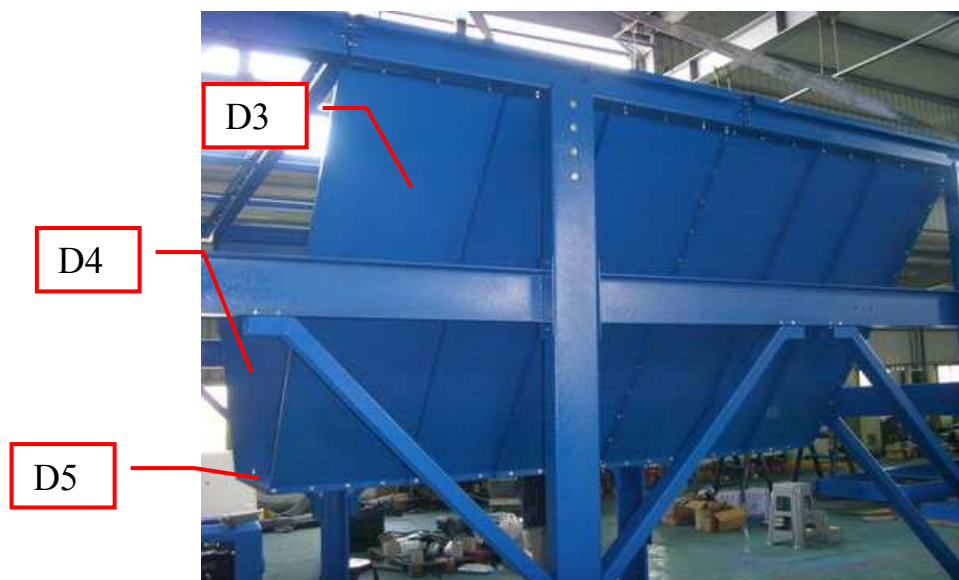


- [ 9 ] Use (18) pcs of 5/16"×3/4" Hex Screw and  
 (18) pcs of 5/16"×OD18×2t Flat Washer to fasten the Upper Edge of F4 to F1.  
 Use (33) pcs of 5/16"×3/4" Hex Screw,  
 (66) pcs of 5/16"×OD18×2t Flat Washer and  
 (33) pcs of 5/16" Hex Nut to fasten the Sides and Edges of F2, F3 and F5.



**Fig. 3**

- [ 10 ] Use (13) pcs of 5/16"×3/4" Hex Screw,  
 (26) pcs of 5/16"×OD18\*2t Flat Washer and  
 (13) pcs of 5/16" Hex Nut to fasten E2 to E1 Base and F2 Edge, as shown in Fig. 3 marked  
 with Yellow Line.
- [ 11 ] Use (13) pcs of 5/16"×3/4" Hex Screw,  
 (26) pcs of 5/16"×OD18\*2t Flat Washer and  
 (13) pcs of 5/16" Hex Nut to fasten E3 to E1 Base and F3 Edge, as shown in Fig. 3 marked  
 with Yellow Line.
- [ 12 ] Use (22) pcs of 5/16"×3/4" Hex Screw,  
 (44) pcs of 5/16"×OD18\*2t Flat Washer and  
 (22) pcs of 5/16" Hex Nut to fasten E4 to E2 and E3.
- Use (7) pcs of 5/16"×3/4" Hex Screw,  
 (14) pcs of 5/16"×OD18\*2t Flat Washers and  
 (7) pcs of 5/16" Hex Nut to fasten with F5. As shown in Fig. 3 marked in Orange.



- [ 13 ] The assembly method of D3 & D4 is same as E2 & E3.

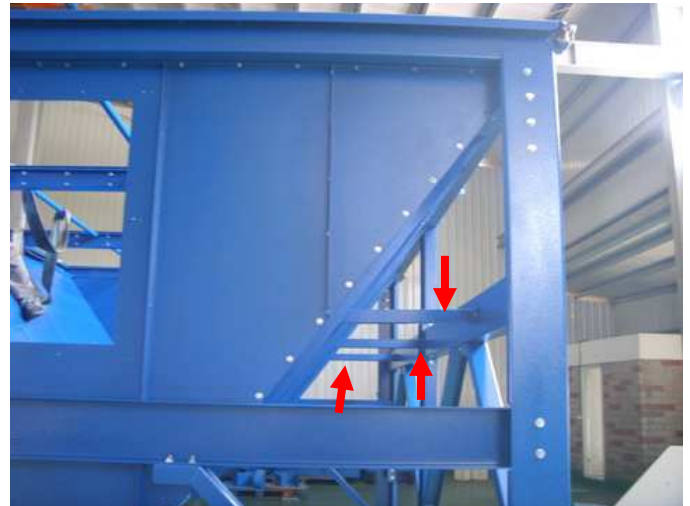
- [ 14 ] Use (22) pcs of 5/16"×3/4" Hex Screw,  
 (44) pcs of 5/16"×OD18\*2t Flat Washer and  
 (22) pcs of 5/16" Hex Screw to fasten D5 with E2 & E3.  
 Use (7) pcs of 5/16"×3/4" Hex Screw,  
 (14) pcs of 5/16"×OD18\*2t Flat Washer and  
 (7) pcs of 5/16" Hex Nut to fasten with E4.



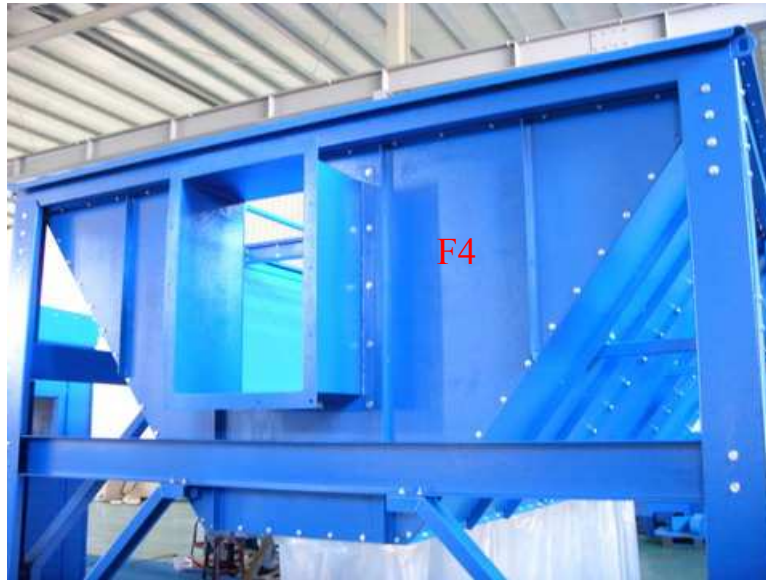
- [ 14 ] Use (18) pcs of 5/16"×3/4" Hex Screw and  
 (18) pcs of 5/16"×OD18\*2t Flat Washers to fasten the Upper Edge of D2 to D1.  
 Use (33) pcs of 5/16"×3/4" Hex Screw,  
 (66) pcs of 5/16"×OD18\*2t Flat Washer and  
 (33) pcs of 5/16" Hex Nut to fasten the Sides and Edges of D3, D4 and D5.



- [ 15 ] Use (8) pcs of 3/8"\*3/4" Hex Screw,  
 (16) pcs of 3/8"\*OD23\*2t Flat Washer and  
 (8) pcs of 3/8" Hex Nut to fasten the Front and Back Horizontal Shafts of I3 between  
 Stands I1 and I2, as shown in Fig. 4.
- [ 16 ] Use (8) pcs of 3/8"\*3/4" Hex Screw,  
 (16) pcs of 3/8"\*OD23\*2t Flat Washer and  
 (8) pcs of 3/8" Hex Nut to fasten the Front and Back Horizontal Shafts of G3 between  
 Stands G1 and G2, as shown in Fig. 5.
- [ 17 ] Install (2) Stand Strengthening Shafts to (2) Front and Back Horizontal Shafts.  
 Use (16) pcs of 3/8"\*3/4" Hex Screw,  
 (32) pcs of 3/8"\*OD23\*2t Flat Washer and  
 (16) pcs of 3/8" Hex Nut to fasten.



- [ 18 ] Use (12) pcs of 5/16"\*3/4" Hex Screw,  
 (24) pcs of 5/16"\*OD18\*2t Flat Washer and  
 (12) pcs of 5/16" Hex Nut to fasten 【6 pcs】 of Skew Board Pulling Shafts to the Skew  
 Boards and Left & Right Horizontal Shafts.



- [ 19 ] Use (14) pcs of 3/8"\*3/4" Hex Screws and  
(14) pcs of 3/8"\*OD23\*2t Flat Washers to fasten the Inlet to F4 Skew Board.

◆ **Assembly Procedures: Plastic Bags**

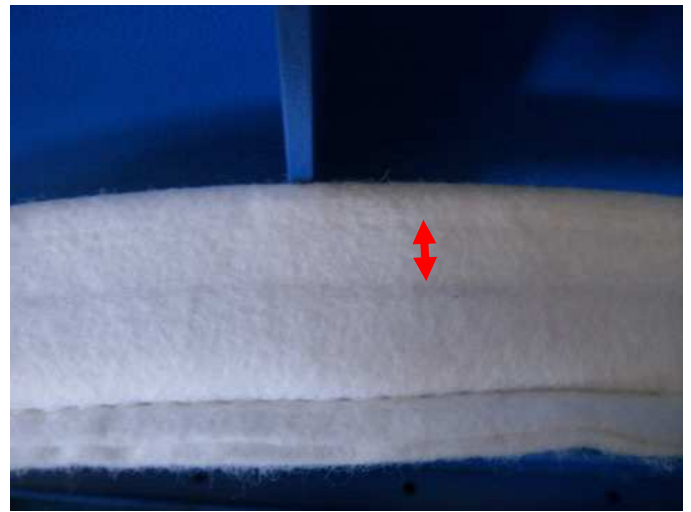


- [ 1 ] Place the Plastic Bags in the middle of the Clamp, Opening Side faces up.  
[ 2 ] Unfold the Plastic Bag Opening towards outside.

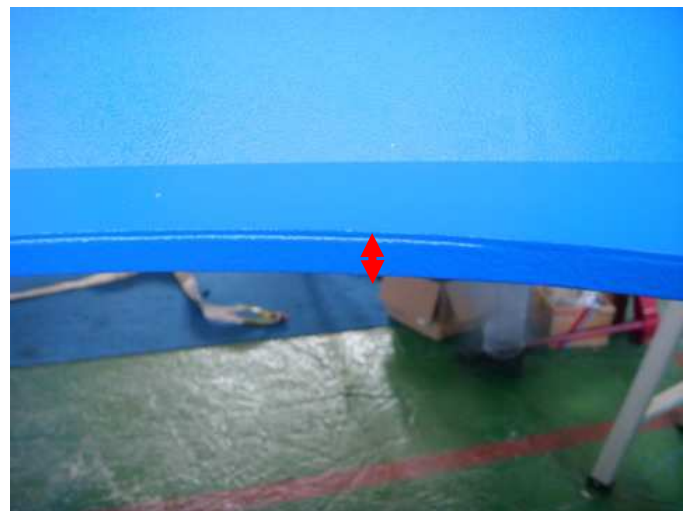
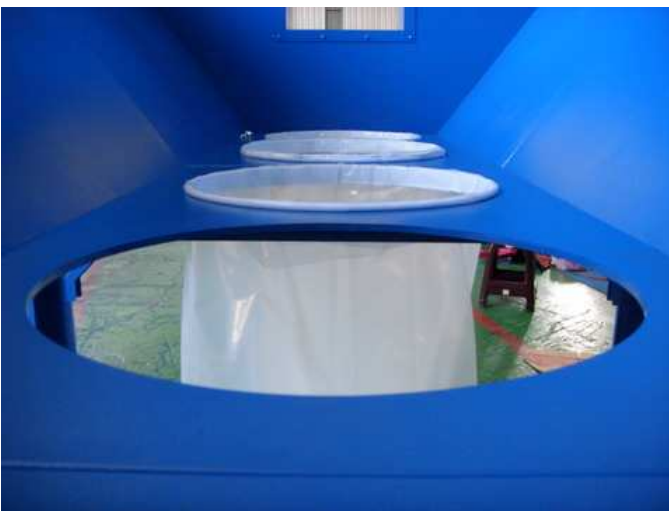




[ 3 ] Put the Plastic Bag through the Filter Frame from the bottom.



[ 4 ] Note: The Clamp is indented.



[ 5 ] The indented part on the Clamp must fit the Strengthening Plate of the Filter Frame. If the Clamp lodges in the Strengthening Plate, try to pull down the bags slightly. It should not fall easily.



[ 6 ] Follow the same method to assemble other bags.



[ 7 ] Assembly of Plastic Bags are completed.



Assembly of Hopper Section is completed.