



REPRESENTED BY:

TODD AIR SOLUTIONS
101 E FISHER ST, 3rd FLOOR
SALISBURY NC 28144
Phone: 704 630-1101
Fax: 704 630-0528

DRAWING SUBMITTAL

CUSTOMER:

AVANI ENVIRONMENTAL
PO BOX 1279
YOUNGSVILLE, NC 27596

DATE: 4/2/2013

ATTENTION: Ms. Nicky Howsare
P.O. # 5971
CFV # 1303861
REPRESENTATIVE ORDER # CFQ# 237474

 x REFERENCE APPROVAL CORRECTION

DRAWING NO.	DESCRIPTION
- - - -	SPECIFICATION SHEET
1303861	MODEL HDBI-240
27205	INLET FLANGE
17110-240	DISCHARGE DAMPER

REMARKS: 2D CAD ATTACHED

SPECIFICATION SHEET

CFV NO. 1303861	CUSTOMER ID NUMBER 3566220	PAGE 1		SCHEDULED SHIP DATE 4/22/13
S O L D	AVANI ENVIRONMENTAL PO BOX 1279 YOUNGSVILLE, NC 27596		CUSTOMER P.O. NUMBER 5971	BUYER Ms. Nicky Howsare
			REPRESENTATIVE TODD AIR SOLUTIONS	REP. ORDER NO. CFQ# 237474
T O				

MARKS

PO# P0023247

QTY.	DESCRIPTION				MODEL	ROT	DISCH	ARR	WHEEL/PROP	INLET				
1	HEAVY DUTY BI BLOWER				HDBI -240	CW	UB	4	SQBI 90%					
MOTOR DATA	HP	RPM	PH	CYCLE	VOLTAGE		FRAME	ENCLOSURE	SUPPLIED BY	INSTALLED BY				
	20	1750	3	60	200/400/50 & 208-230/460/60		256T	TEFC	CFV	CFV	GROOVES	FXD/ADJ	BELT	
CFV MOTOR PART NUMBER														
376629S														
FAN DATA	DENSITY	TEMP.	ALTITUDE	CFM	SP	RPM	BHP			MOTOR SHEAVE	BUSHING			
AT OPERATING CONDITIONS	.075	70 °F.		8000	8.000	1750	14.700							
MOTOR VENDOR MODEL NUMBER	1LE21212BB214AA3										FAN SHEAVE	BUSHING		

Record Print, 2D CAD Drawings

Complete Motor Description:

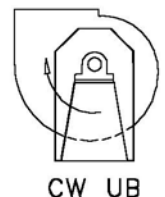
MTR, 20 HP, 1425/1750 RPM, 3PH, 50/60Hz, 200/400/50 & 208-230/460/60, TEFC, Prem Eff, FM, 1.15 SF, F Insul., 40°C Amb., Sealed Bearings, F1 Box, Alum. Frame, CE, 1.00 SF @ 50 HZ., GP100A, Siemens

Maximum allowable wheel speed at 70°F is 2740 RPM

Estimated Shipping Weight: 1026 pounds

- CLASS III WHEEL CONSTRUCTION
- PAINT DAMPER WITH SAME SPECIAL COATING AS FAN
- MANUAL CONTROLLED OPPOSED BLADE DISCHARGE DAMPER
- DRI LL DISCHARGE FLANGE STANDARD
- DRI LL INLET FLANGE STANDARD BOLT CIRC LE ON-CENTERS
- QUI CK OPEN INSPECTION DOOR AT 3 O' CLOCK
- DRAIN
- TEFLON SHAFT SEAL
- FAN & DAMPER TO BE PAINTED AVANI BLUE

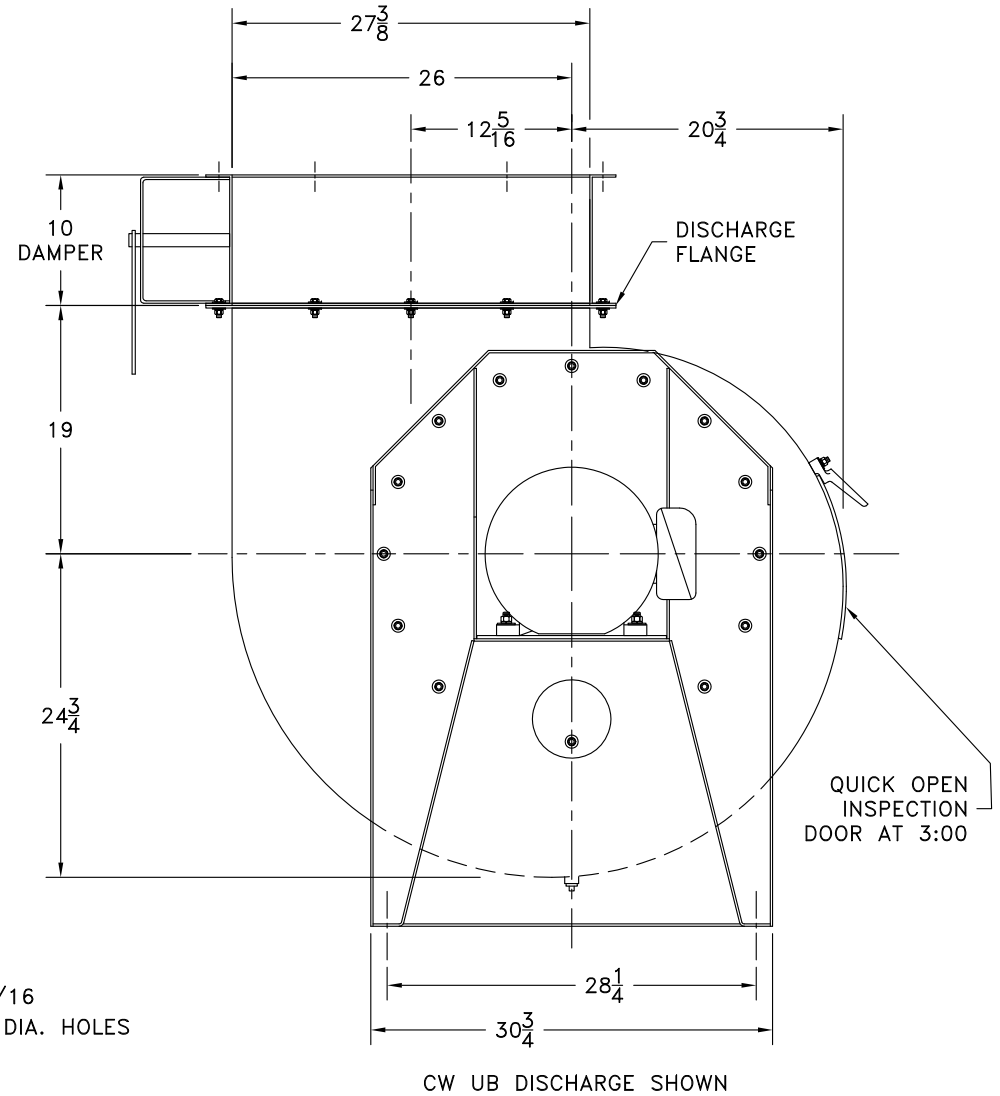
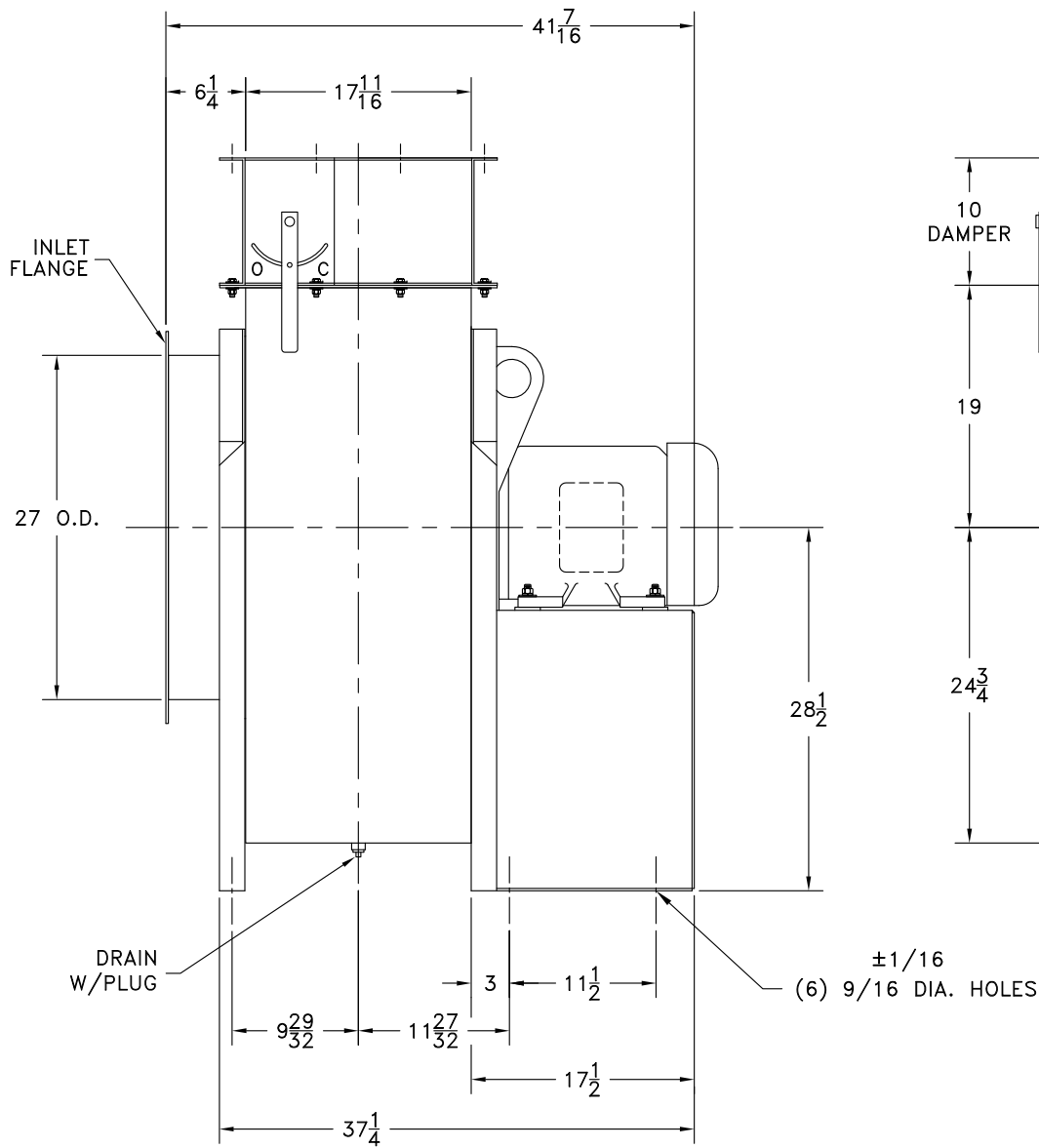
Submittal Email: cbendi_ksby@avanienvironmental.com



DR. BY _____ **DCF**

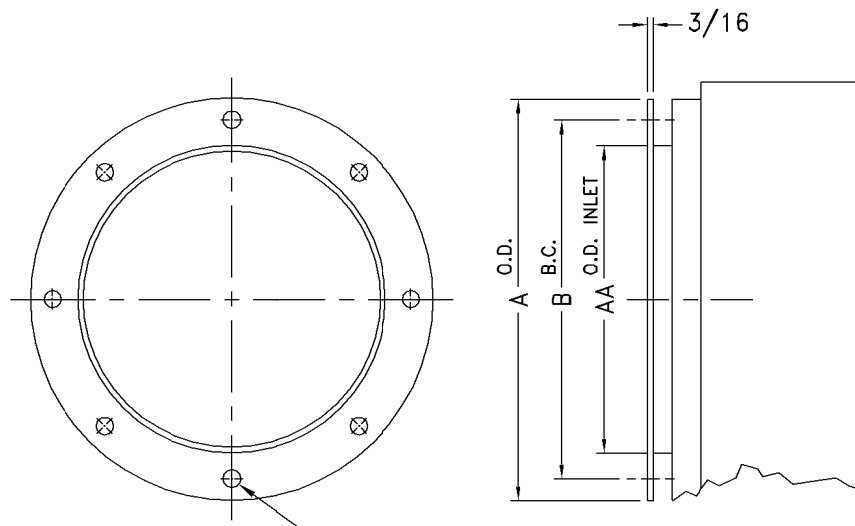
DATE: 4/2/2013

CERTIFIED

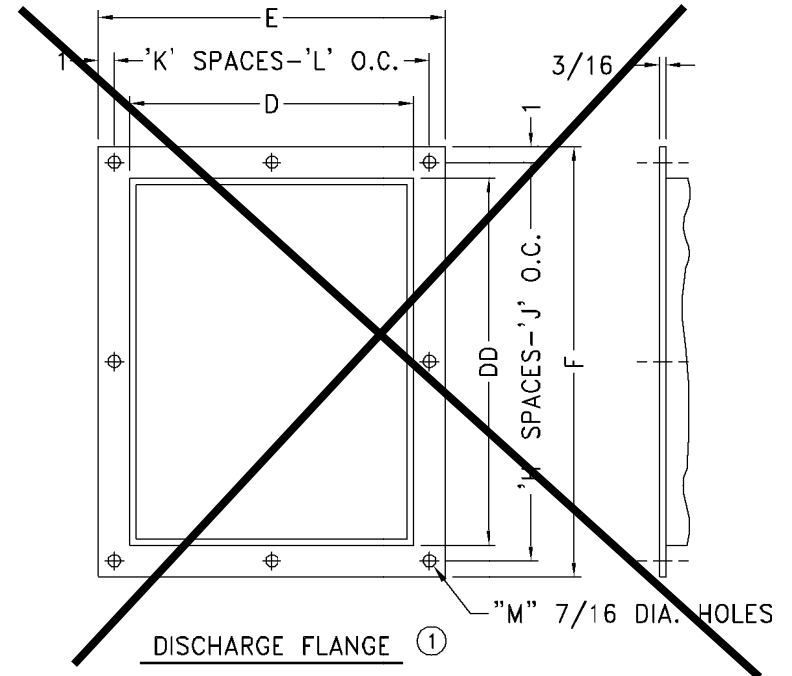


- NOTES: 1. MOTOR: 20 HP, 1750 RPM, 256T FRAME, TEFC SHOWN.
 2. SEE DRAWING A27205 FOR INLET FLANGE.
 3. SEE DRAWING A17110-240 FOR DISCHARGE DAMPER.
 4. WHEEL: CLASS III, 90% WIDTH SQBI CONSTRUCTION.
 5. TEFLON SHAFT SEAL.

				SUPERSEDES:		TOLERANCES: FRACTIONS ±1/8 ANGLES: ± 1° DECIMALS: X.XXX = ±0.005 X.XX = ±0.060 X.X = ±0.120 ALL DIMENSIONS IN INCHES UNLESS OTHERWISE SPECIFIED		SCALE: FULL IN CAD DATE: 04/01/13		cincinnati fan 7697 SNIDER ROAD MASON, OHIO 45040	
				SIMILAR TO:		ALL DIMENSIONS IN INCHES UNLESS OTHERWISE SPECIFIED		DR. BY: DCF CHK. BY:		TITLE HDBI-240 ARR. 4 W/DISCHARGE DAMPER FOR AVANI ENVIRONMENTAL	
NO.	DESCRIPTION	DATE	INITIALS	CERTIFIED		MATERIAL:		ASSEMBLY		DRAWING NO. A 1303861	
REVISIONS										SHEET REV. 1 of 1	



INLET FLANGE
"N" HOLES, "P" DIA.

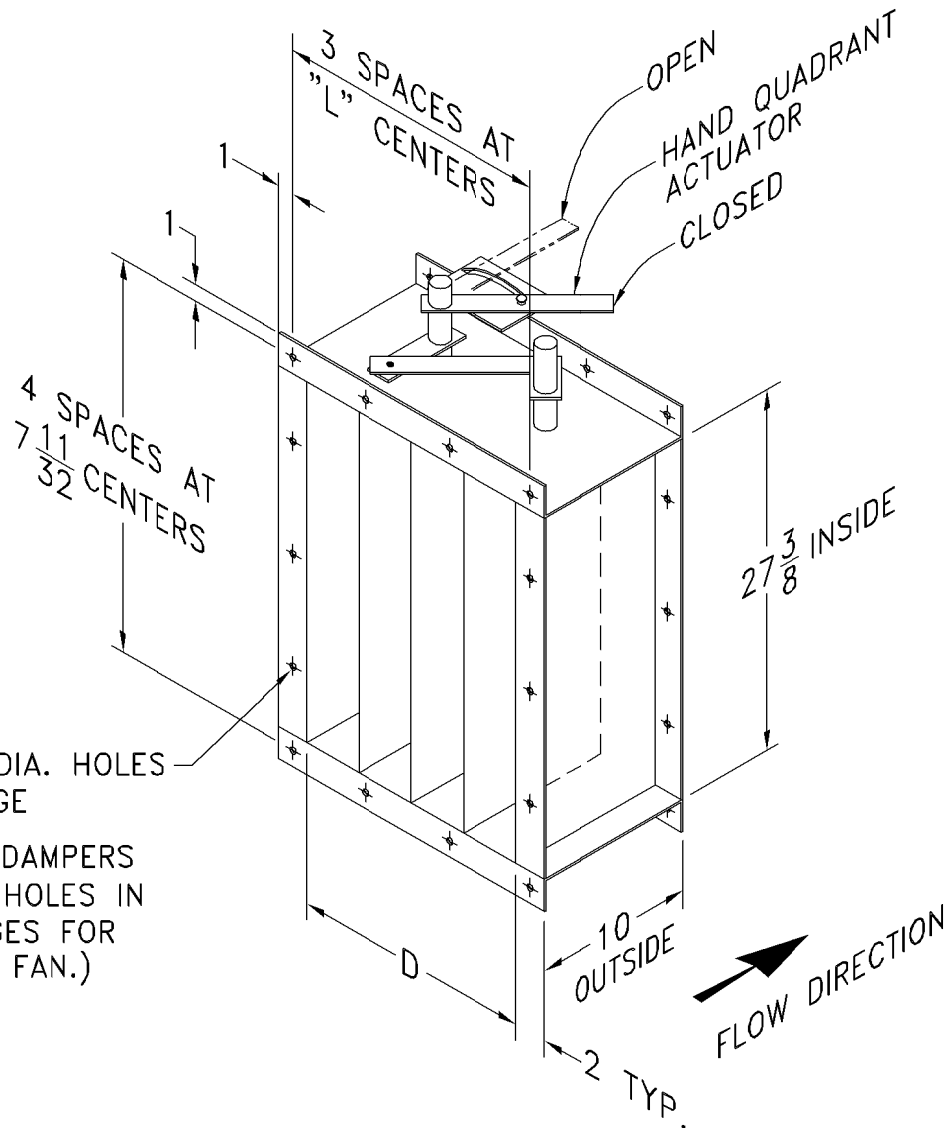


DISCHARGE FLANGE ①

INLET					
SIZE	A O.D.	B B.C.	N	AA DIA.	P
120	16	14-3/8	8	13-1/4	7/16
130	17-3/4	15-15/16	8	14-5/8	7/16
150	19-1/4	17-1/2	8	16-1/8	7/16
160	21-1/8	19-3/8	8	18	7/16
180	23-1/2	21-1/2	12	20	7/16
200	25-1/2	23-1/2	12	22	7/16
220	28-1/8	26-1/8	12	24-5/8	7/16
X 240	30-3/4	28-3/4	16	27	7/16
270	33-3/4	31-5/8	16	30	7/16
300	37-1/4	35-1/4	16	33-1/2	7/16
330	40-3/8	38-3/4	16	36-3/4	1/2
360	43-5/8	42	16	40	1/2

DISCHARGE								
D	E	F	H	J	K	L	M	DD
9-3/8	13-3/8	17-11/16	2	7-27/32	2	5-11/16	8	13-3/4
10-3/8	14-3/8	19-3/16	2	8-19/32	2	6-5/16	8	15-1/4
11-3/8	15-3/8	20-3/4	3	6-1/4	2	6-11/16	10	16-13/16
12-1/2	16-1/2	22-7/16	3	6-13/16	2	7-1/4	10	18-7/16
13-7/8	17-7/8	24-1/2	3	7-1/2	2	7-15/16	10	20-3/8
15-1/4	19-1/4	26-3/8	3	8-1/8	3	5-3/4	12	22-3/8
16-7/8	20-15/16	28-7/8	4	6-23/32	3	6-5/16	14	24-7/8
18-9/16	22-5/8	31-3/8	4	7-11/32	3	6-7/8	14	27-3/8
20-7/16	24-1/2	34-1/8	4	8-1/32	3	7-1/2	14	30-1/16
22-3/4	26-3/4	37-5/8	5	7-1/8	3	8-1/4	16	33-9/16
24-7/8	28-7/8	40-7/8	7	5-9/16	5	5-3/8	24	36-3/4
27-1/4	31-1/4	44-1/4	7	6-1/32	5	5-27/32	24	40-1/4

NOTE:
① NOT AVAILABLE ON ANY MODEL FOR DOWNBLAST, BOTTOM ANGULAR DOWN OR TOP ANGULAR DOWN DISCHARGE POSITIONS.
DISCHARGE FLANGE IS STANDARD ON SIZES -270 THRU -360.



(14) 7/16 DIA. HOLES EACH FLANGE

(STANDARD DAMPERS HAVE BOLT HOLES IN BOTH FLANGES FOR BOLTING TO FAN.)

NOTES:

1. OPPOSED BLADE IS STANDARD. PARALLEL BLADE IS OPTIONAL.
2. DAMPER BLADES WILL BE PERPENDICULAR TO FAN SHAFT.
3. STANDARD MATERIAL IS CARBON STEEL WITH RUST INHIBITING PRIMER. OPTIONAL MATERIAL _____.
4. STANDARD CONSTRUCTION MAX. TEMPERATURE: 300° F.
 OPTIONAL HIGH TEMPERATURE CONSTRUCTION MAX. TEMPERATURE: 800° F.

	% WIDTH	D	L
	100	18-5/8	6-7/8
	95	18-5/32	6-23/32
X	90	17-25/32	6-19/32
	85	17-5/16	6-7/16
	80	16-27/32	6-9/32
	75	16-15/32	6-5/32
	70	16	6
	65	15-5/8	5-7/8
	60	15-5/32	5-23/32
	55	14-11/16	5-9/16
	50	14-5/16	5-7/16
	45	13-27/32	5-9/32
	40	13-3/8	5-1/8

