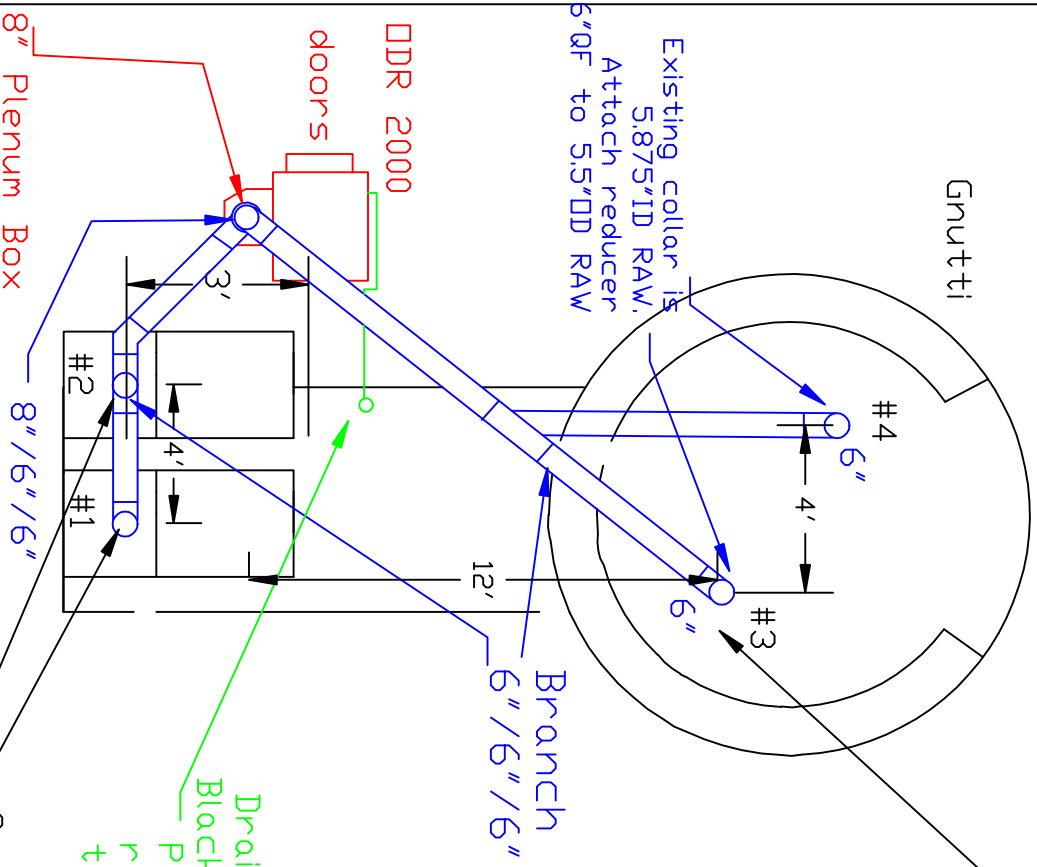


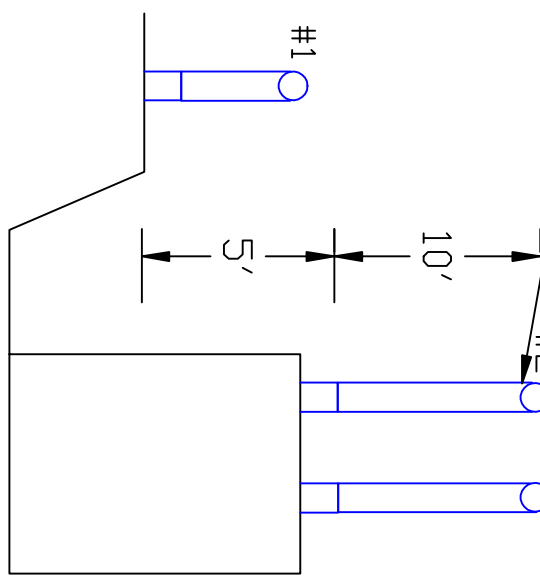
Electrical info:
 Motor 3HP
 at 480volts
 5 full load amps

Ducwork Layout for DDR 2000

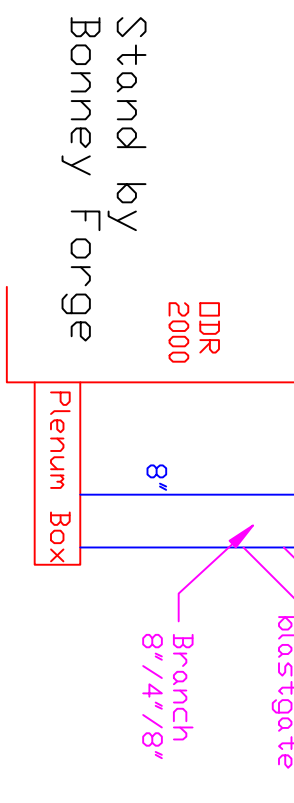
Plan View



Side View



Side View of Bleed air



8" Plenum Box
 8" / 6" / 6" Branch in the vertical position
 Drain line Black iron P-Trap run to trough
 Connections #1 and #2: Attach reducer 6" QF to 5.625" DD RAW

Avani Environmental
 35 Cypress Drive 27596
 Youngsville, NC # 919-570-2862 F # 919-570-2863
AEI
 Project: Bonnet Forge
 Drawing: Gnutti Elbow
 Date: 1/20/12 Drawn by: RAW
 Revision Date: