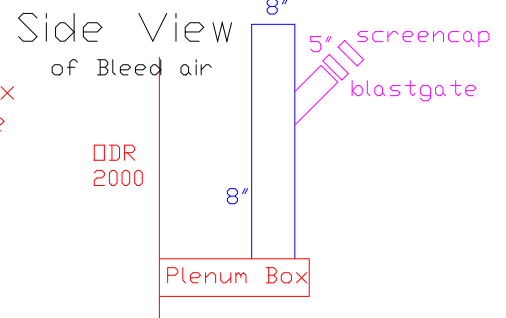
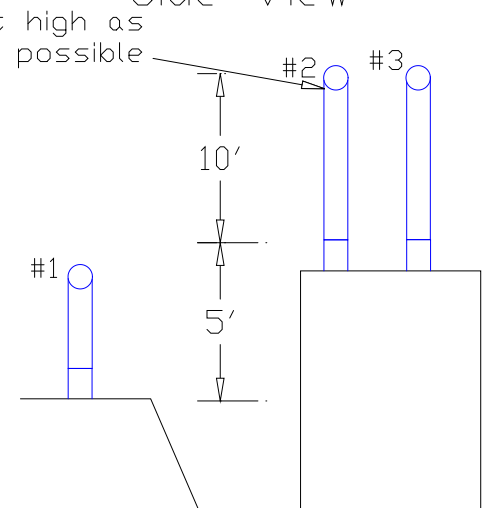
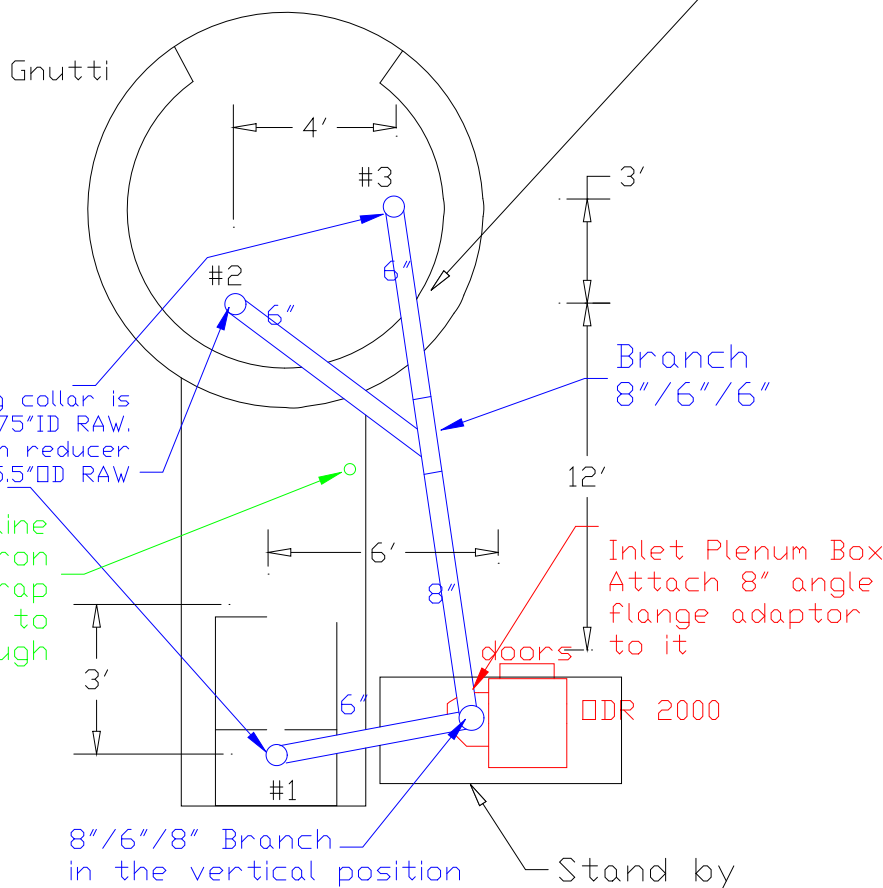


Electrical info:
 Motor 3Hp
 at 480volts
 5 full load amps

Ducwork Layout for ODR 2000

Plan View

Side View



Existing collar is 5.875\"/>

Drain line
 Black iron
 P-Trap
 run to
 trough

Branch
 8\"/>

Inlet Plenum Box
 Attach 8\"/>

Stand by
 Bonney Forge

Industrial Air Quality		IAQ
102 AG DRIVE Youngsville, NC 27596		
P# 919-562-7181	F# 919-562-7182	
Project: Bonney Forge		
Drawing: Ductwork Layout		
Date: 7/1/09	Drawn by: RAV	
Revision Date: 8/21/07		