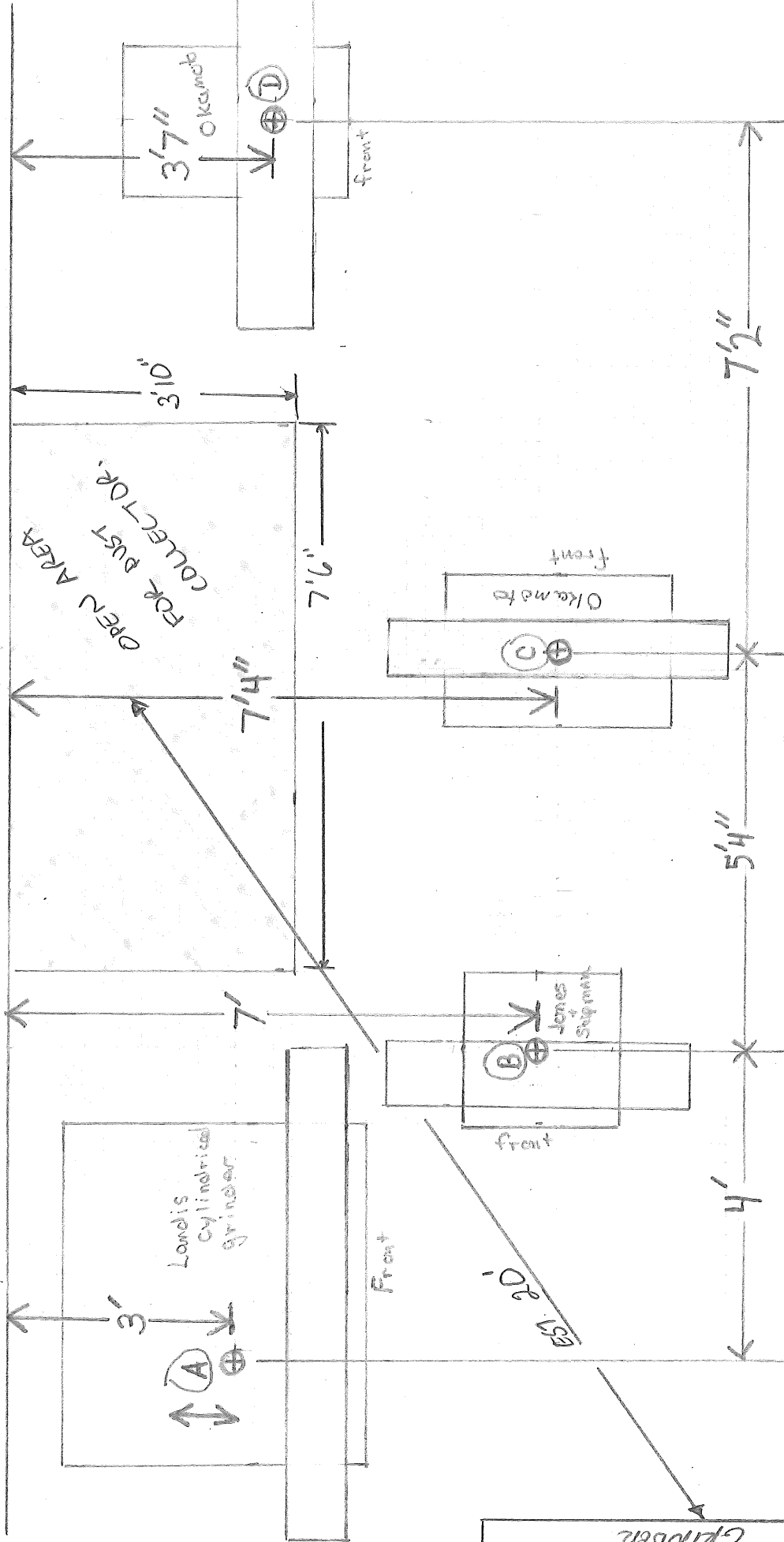


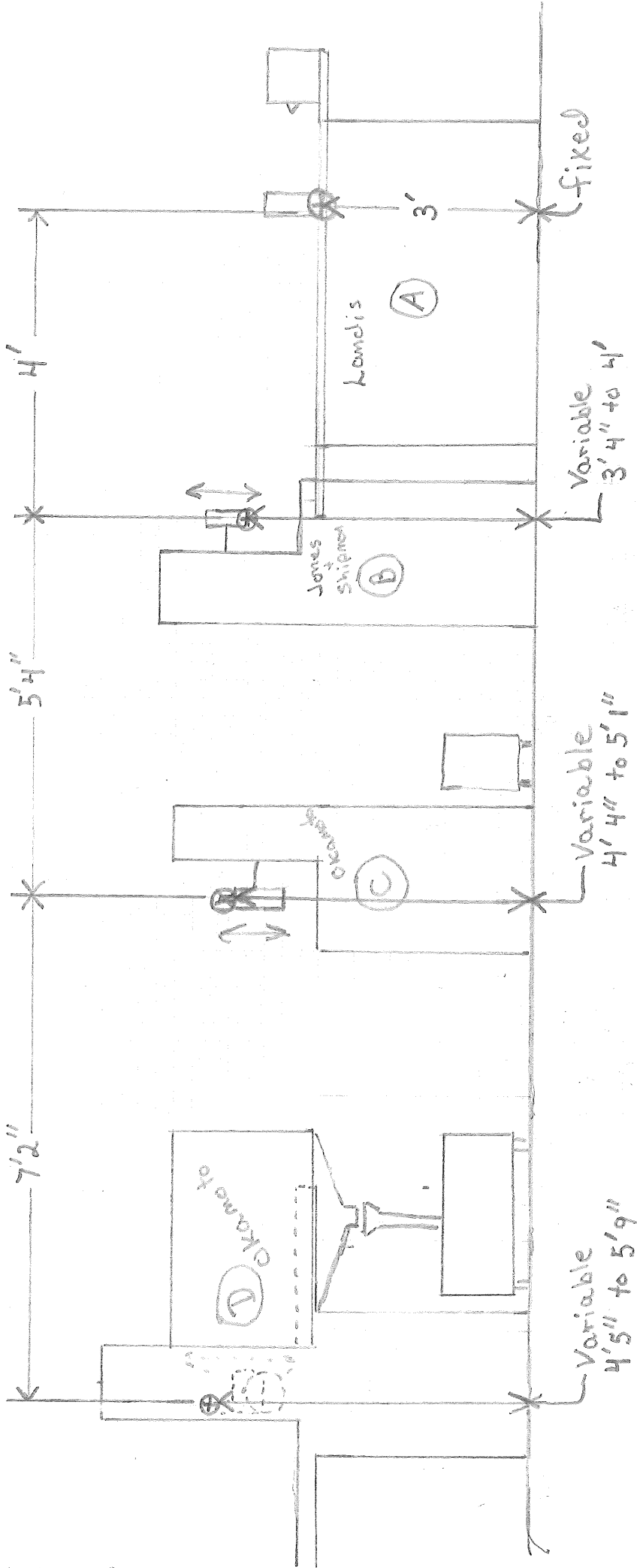
42" from floor to center of 3" round rail



No provision on (A) or (B) for hose connection. Spec. are from fence to wheel guard and Apron. center to center from (A) to (B). (A) Travels from 3' At rest to 3' 6" to work

2 1/2" hose connections integrated into wheel housings on (C) and (D)

open area with no grinder interference collector location 7'6" x 3' 10"



- Gates at all grinders
- must flex within specs. given
- wheel rotation: clockwise when viewed from front on (B) (C) (D)
rotation on (A) is toward operator.
- wheel dressing: from front on (A)
from right side or bottom on (B)
from bottom on (C). overhead dresser on (D)

As viewed from
Fence