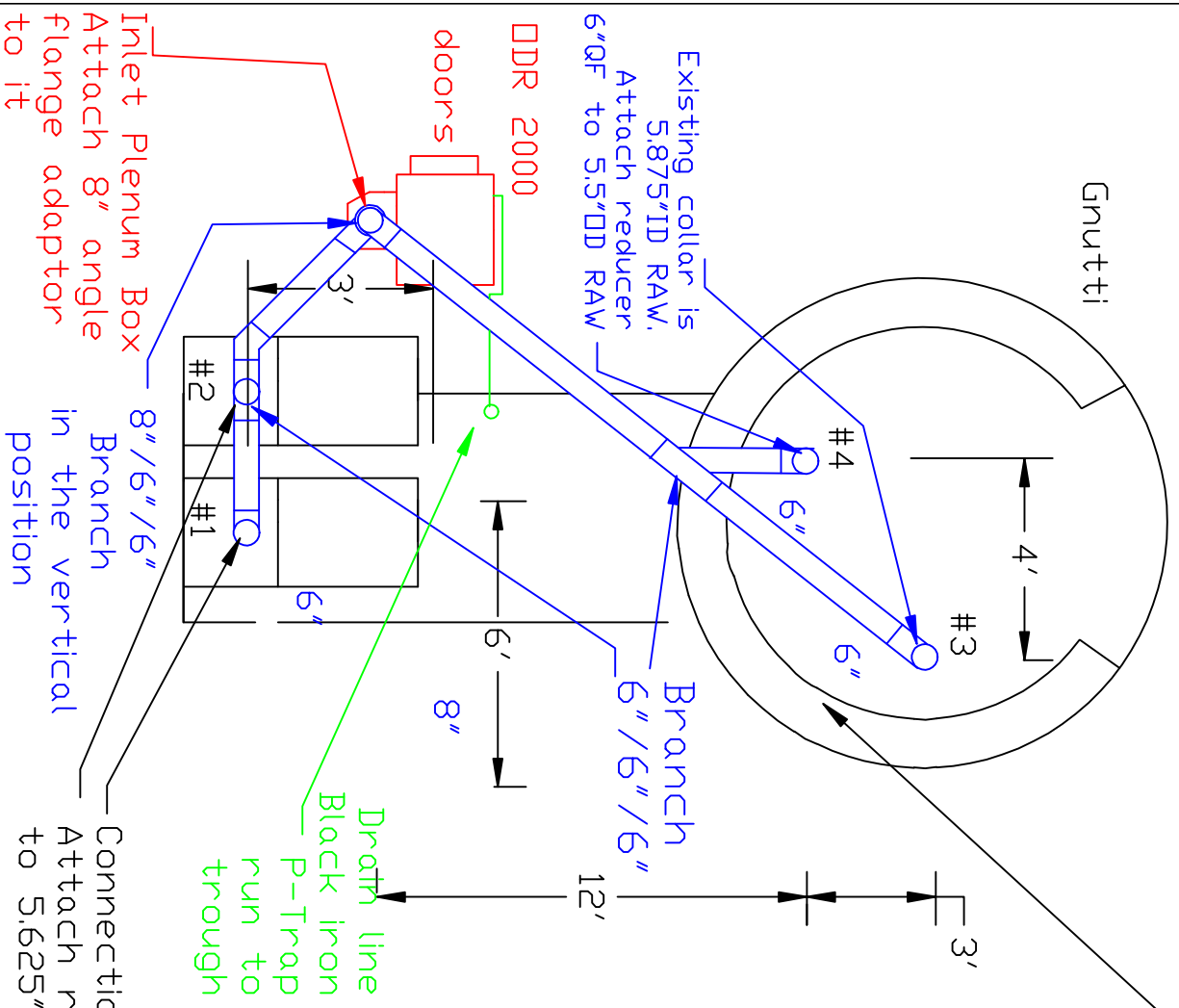


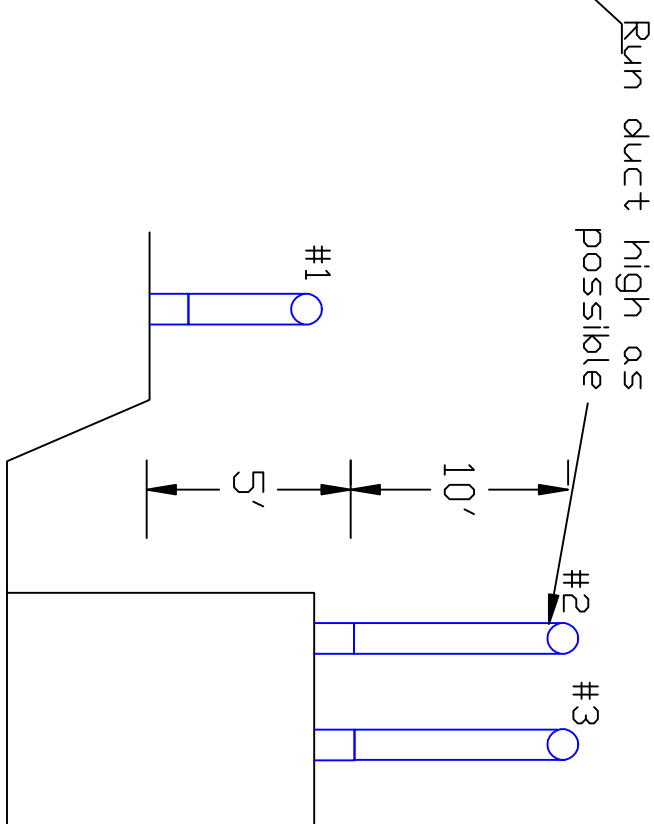
Electrical info:  
 Motor 3Hp  
 at 480volts  
 5 full load amps

# Ducwork Layout for DDR 2000

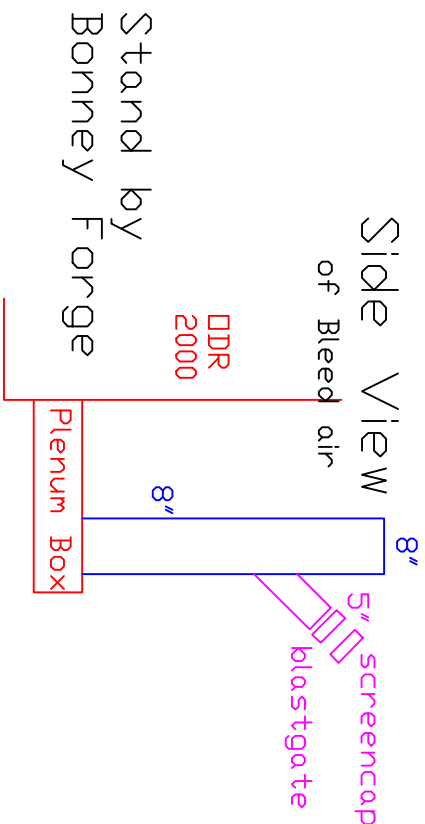
Plan View



Side View



Side View



Inlet Plenum Box  
 Attach 8" angle  
 flange adaptor  
 to it

Existing collar is  
 5.875"ID RAW.  
 Attach reducer  
 6"QF to 5.5"OD RAW

Industrial Air Quality  
 102 RD DRIVE  
 Youngsville, NC 27596  
 P# 919-562-7181 F# 919-562-7182  
 Project: Bonney Forge  
 Drawing: Ductwork Layout  
 Date: 7/1/09 Drawn by: RAV  
 Revision Date: 8/21/07

