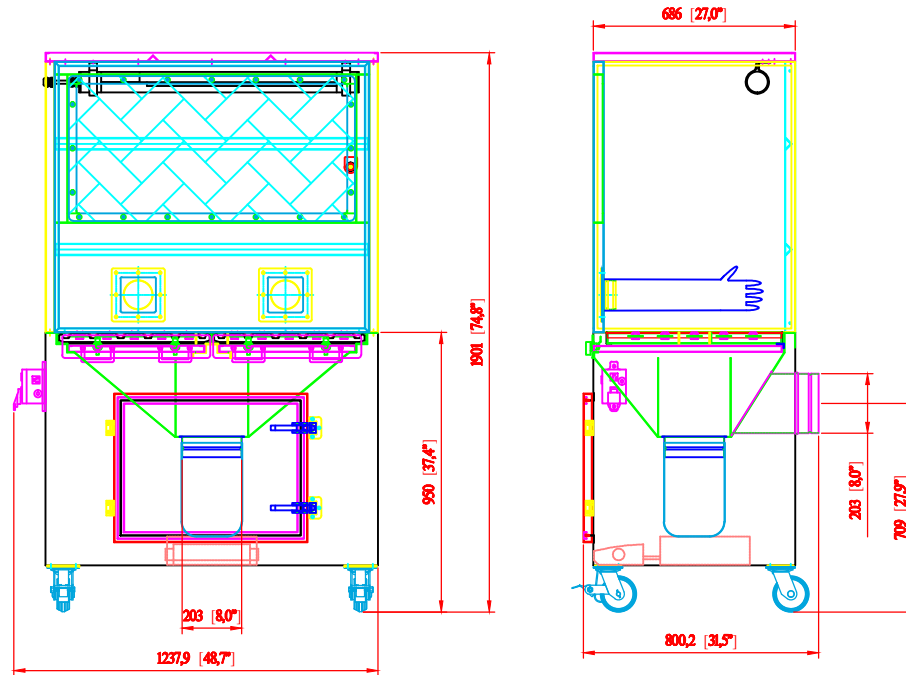
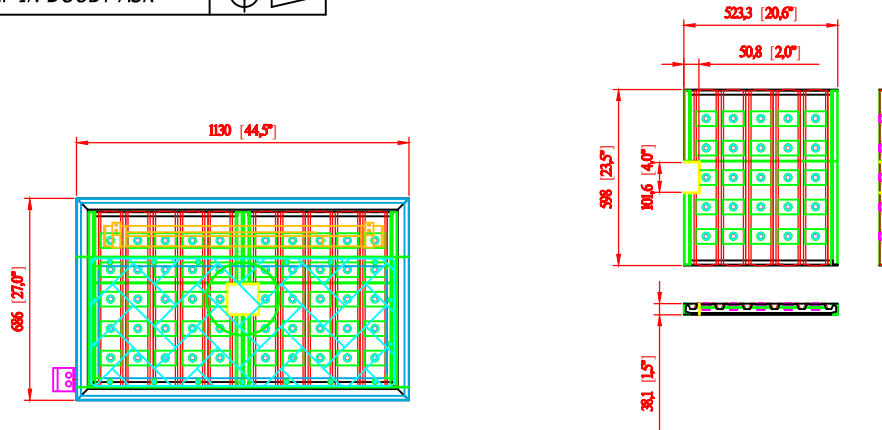


DO NOT SCALE

IF IN DOUBT ASK



Revisions			
Rev	Description	Date	Approved



- SDT-1.5 SPECIFICATION -

- Dimension: 48.7" x 31.5" x 74.8"
(1237.9 x 800.2 x 1901mm)
- outlet size: 8" (304.8mm)
- Construction: 14 Gauge
- Max. Operating Temp.: 120°C
- Paint Color: powder coated Blue
- lexan windows
- 10 lb scale to read scrap level
- flow sensor to read duct flow
- built in stack-light:
 - Green - Safe
 - Red - Low Flow
 - Yellow - Bag on Scale Exceeds 10 lbs
- fully assembled
- paint color: powder coated Blue
- ***Electrical Outlets: (2) 110V Outlets @ (1) Switch
- ***Light Switch: (1) For overhead lights
- ***Overhead Lights: (1) Explosion Proof Lights (110V, Single Phase, 60 Hz, 20W, non-recessed)
- ***100% downdraft
- ***full grated table w/fixture holes

AVANI ENVIRONMENTAL INTL. INC. Sales Department
 95 Cypress Drive (919) 570-2862
 Youngsville, NC 27596 info@avanienvironmental.com

Drawn by:	Date	Name	Part Number:	Title:	
Checked by:	2014-07-11	***	***	SDT-1.5 w/o filter w lexan	
The drawings, AutoCAD, 3-D Models, and specifications are the property of Avani Environmental Intl. Inc. (AE) and may not be reproduced, distributed, modified, or otherwise used, except provided herein, without the express written permission of AE.				Size	Drawing Number:
				A	Bloom
				Scale	
				1 = 20	