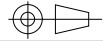


DO NOT SCALE

IF IN DOUBT ASK



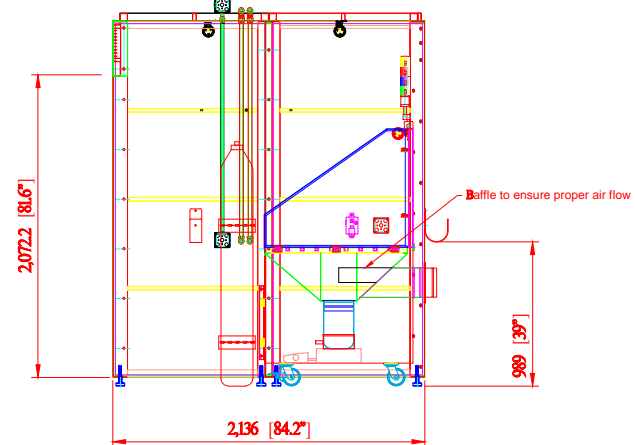
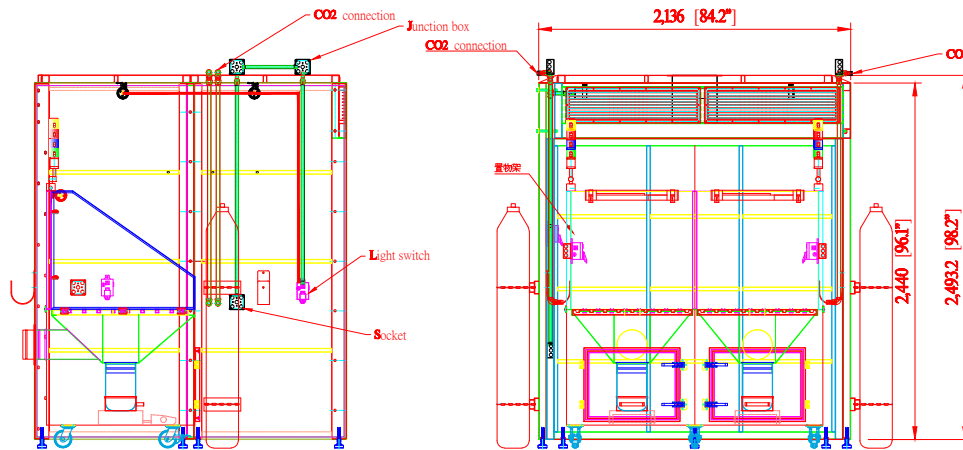
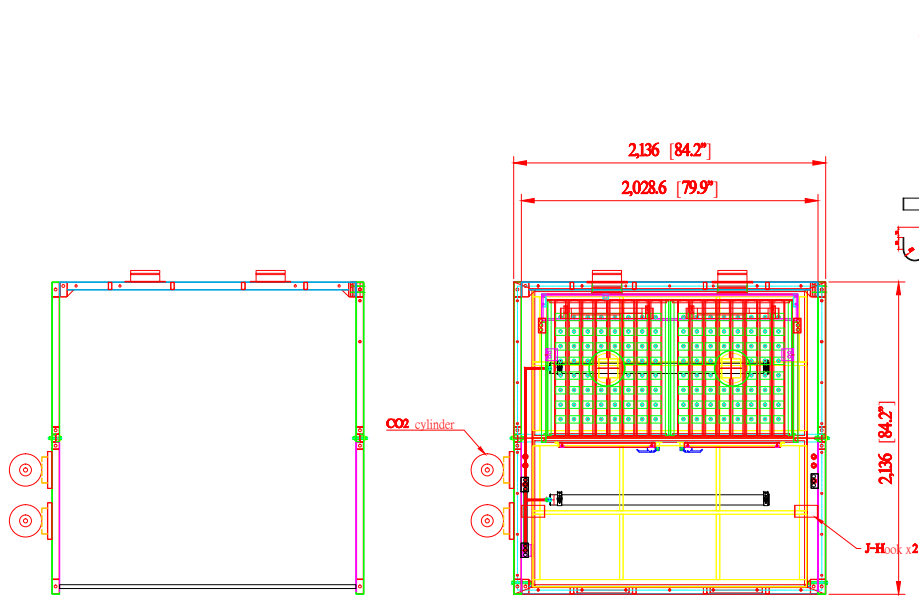
Revisions			
Rev	Description	Date	Approved

WB-7078G w/SDT-81 GRINDING BOOTH w/Downdraft table  
**SPECIFICATIONS**

- Top Panel Dimensions: 84.2" x 84.2" x 2.1"
- Side Panel Dimensions: (2) 84.2" x 96.1"
- Working Lights: (2) Explosion Proof Lights (110V, Single Phase, 60 Hz, 20W)
- Support Structure: 1 1/2" x 4" steel stock welded
- Panel Construction: 12-gauge welded steel single wall with cross and up bracing
- Powder Coated: off white
- Custom flanges on side
- Four Piece Configuration: (2) side panels, (1) back panel, (1) Top hood
- Booths can be mounted back-to-back, side-to-side or both options
- Electrical Outlets: (2) 110V Outlets @ (1) Switch (additional single or three phase outlets available)
- Light Switch: For overhead lights
- Compressed Air Connection
- CO2 or Gas Connection: (additional gas lines or compressed lines available)
- Shallow boxes built into scales (5" walls with front hinged)
- Baffle installed to ensure proper air flow/prevent larger waste material from extraction

**OPTIONS**

- Welded Nuts: Optional locations for J-Hooks
- Welding Nuts: For wire feeder or welder bracket
- Adjustable Rear Shelf (solid, grated or cutting table)
- Corner Shelves
- Viewing Windows
- Custom Welding Brackets
- Foot Lockers
- Fixtures, Lazy Suzans
- Any option that can fit inside the booth or on the booth



AVANI ENVIRONMENTAL INTL. INC. Sales Department  
 95 Cypress Drive  
 Youngsville, NC 27596  
 (919) 570-2862  
 info@avanienvironmental.com

Drawn by:	Date	Name	Part Number:	Title:
Checked by:	2014.07.24	***	Bloom	WB-7X7X8(Bloom)
The drawings, AutoCAD, 3-D Models, and specifications are the property of Avani Environmental Intl. Inc. (AE) and may not be reproduced, distributed, modified, or otherwise used, except provided herein, without the express written permission of AE.			Size	Scale
			F	1 = 35
			Drawing Number: WB-7-7P-G (Bloom)	