



www.avanienvironmental.com

Purchase Order

Sales Order #	Date	P.O. No.	Due Date
22156	11/19/2014	9969	11/19/2014
Project Name			

Vendor
Triangle Metalworks, Inc Robbie Tilley 100 Moores Pond Road Youngsville, NC 27596

Ship Via	Ship To
SEE PO	Barnes International Inc 814 Chestnut Street Rockford, IL 61102 PO 61304-00
FOB	

Vendor Phone	Vendor Fax	Vendor E-mail	Terms
919-556-8382	919-562-3023	Robbie@trianglemetalworks.com;jimf...	Net 30

Item	MPN	Description	Qty	Unit Price	Amount
Jacobs Duct - 2mm	Jacobs Duct - 2MM	Custom Transition Piece	1	285.00	285.00
Jacobs Duct - 2mm	Jacobs Duct - 2MM	6" dia end cap	1	10.00	10.00

Total	\$295.00
--------------	-----------------

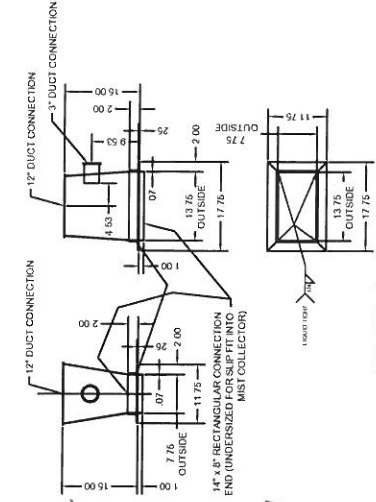
95 Cypress Dr, Youngsville, NC 27596 info@avanienvironmental.com
Ph: (919) 570-2862 Fx: (919) 570-2863

G1000

DO NOT SCALE DRAWING

#	DUCT PART	QUANTITY
1	12" 1000mm SLIP TUBE	1
2	12" 1000mm TUBE	1
3	12" 200mm TUBE	1
4	12" 90° ELBOW	1
5	12" 45° ELBOW	1
6	CONICAL LATERAL, 12" x 9" x 6"	1
7	CONE 0" x 6"	2
8	8" 90° ELBOW	1
9	8" 200mm TUBE	2
10	8" HOSE CONNECTION	1
11	8" 200mm TUBE	1
12	8" 1000mm SLIP TUBE	1
13	8" 90° ELBOW	1
14	8" 500mm SLIP TUBE	1
15	8" 500mm TUBE	1
16	CONICAL LATERAL, 8" x 6" x 6"	1
17	CAP 6"	1
18	6" 90° ELBOW	1
19	6" 1000mm SLIP TUBE	1
20	6" 1000mm TUBE	1
21	6" HOSE CONNECTION	1
22	HOSE, 0.9" FLEX. CLEAR, 30' LG	24"
23	HOSE, 0.9" FLEX. CLEAR, 30' LG	24"

#	DUCT PART	QUANTITY
24	PULL RING CLAMP, 12"	6
25	U-SHAPE GASKET, 12"	6
26	O-RING GASKET, 12"	3
27	PULL RING CLAMP, 6"	2
28	U-SHAPE GASKET, 6"	4
29	PULL RING CLAMP, 8"	10
30	U-SHAPE GASKET, 8"	12
31	O-RING GASKET, 8"	4
32	WORM GEAR CLAMP, 8"	2
33	PULL RING CLAMP, 6"	5
34	U-SHAPE GASKET, 6"	6
35	O-RING GASKET, 6"	2
36	WORM GEAR CLAMP, 6"	2
37	PULL RING CLAMP, 3"	7
38	U-SHAPE GASKET, 3"	9
39	ADAPTER TRANSITION, 6" x 14" TO 0.12"	1
40	3" 200mm TUBE	3
41	3" 90° ELBOW	3
42	3" 200mm SLIP TUBE	1
43		
44		
45		
46		



DETAIL A
ADAPTER TRANSITION FROM COLLECTOR

****SEE SHEET #2 FOR PARTS LAYOUT****

LEGEND

- SEE DRAWING SHEET OF MATERIAL
- SEE REFERENCE LIST OF MATERIAL
- REGIONS

816 90 CALIFORNIA
G1000 MIST COLLECTION DUCTING
78 80095.1001

816 90 CALIFORNIA
G1000 MIST COLLECTION DUCTING
78 80095.1001