



www.avanienvironmental.com

Purchase Order

Sales Order #	Date	P.O. No.	Due Date
22120	12/9/2014	10079	12/9/2014
Project Name			

Vendor
Triangle Metalworks, Inc Robbie Tilley 100 Moores Pond Road Youngsville, NC 27596

FOB

Ship Via
Best Way

Ship To
Avani Environmental Int'l Inc 95 Cypress Drive Youngsville, NC 27596 Barnes SO 22120

Vendor Phone	Vendor E-mail	Terms
919-556-8382	Robbie@trianglemetalworks.com;jimf@trian...	Net 30

Item	MPN	Description	Qty	Unit Price	Amount
Customized		Custom 12" transition per the attached drawing	2	285.00	570.00
Customized		6" end plate per the attached drawing.	2	10.00	20.00

Total	\$590.00
--------------	----------

Please confirm receipt of purchase order, estimated ship date, and tracking information to Barb Puffer, bpuffer@avanienvironmental.com

Avani is not liable for any shipping charges if shipped on an account different from what is provided in the PO.

95 Cypress Dr, Youngsville, NC 27596 info@avanienvironmental.com
Ph: (919) 570-2862 Fx: (919) 570-2863

DO NOT SCALE DRAWING

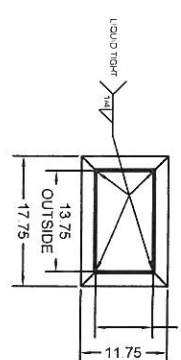
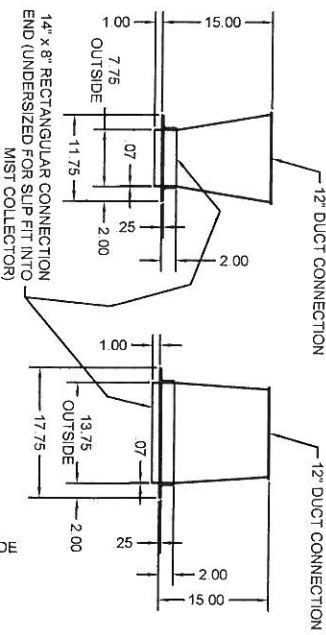
2000 GPM MIST COLLECTION SYSTEM cont.

DUCT PART	QUANTITY
12" 1000mm SLIP TUBE	2
12" 1000mm TUBE	1
12" 2000mm TUBE	1
12" 90° ELBOW	2
12" 200mm TUBE	1
12" 500mm TUBE	1
LATERAL, 12" x 12" x 4"	1
CONICAL LATERAL, 12" x 10" x 8"	1
CONE, 10" x 8"	1
8" 2000mm TUBE	2
8" 1000mm SLIP TUBE	2
CONICAL LATERAL 8 x 6 x 6	1
8" 90° ELBOW	1
CAP, 6"	1
6" 60° ELBOW	1
6" 1000mm SLIP TUBE	1
6" 1000mm TUBE	1
6" HOSE CONNECTION	1
HOSE, Ø8", FLEX, CLEAR, 36" LG	1
HOSE, Ø6", FLEX, CLEAR, 36" LG	1
8" HOSE CONNECTION	1
8" 200mm TUBE	1
8" 60° ELBOW	1

2000 GPM MIST COLLECTION SYSTEM cont.

DUCT PART	QUANTITY
4" 200mm TUBE	1
4" 1000mm TUBE	1
4" 1000mm SLIP TUBE	1
4" 90° ELBOW	2
4" 60° ELBOW	1
4" 200mm SLIP TUBE	1
4" 500mm TUBE	1
ADAPTER, 14" x 8" TO Ø12" SEE DETAIL A	1
PULL RING CLAMP, 12"	12
PULL RING CLAMP, 10"	2
PULL RING CLAMP, 8"	10
PULL RING CLAMP, 6"	6
U-SHAPE GASKET, 12"	12
U-SHAPE GASKET, 10"	2
U-SHAPE GASKET, 8"	10
U-SHAPE GASKET, 6"	6
O-RING GASKET 12"	4
O-RING GASKET 8"	4
O-RING GASKET 6"	2
WORM GEAR CLAMP 8"	2
WORM GEAR CLAMP 6"	2
PULL RING CLAMP, 4"	8
U-SHAPE GASKET, 4"	9
O-RING GASKET 4"	2

** SEE SHEET #2 FOR PARTS LAYOUT**



DETAIL A
 ADAPTER TRANSITION FROM COLLECTOR
 Need
 6" End Plate - 6.5"OD (165mm)

SCALE	1:12
DESIGN	BWL
DRAWN	BWL
CHECKED	MB
DATE	10/24/14
REV	

BARNES
 INDUSTRIAL INC.
 ROCKFORD, ILLINOIS 61105
 (815) 964-8661

SUPERIOR
 ADVANCED FILTRATION

TITLE: **G2000 MIST COLLECTION DUCT PARTS**
 ORDER NO: 79.80095.1005
 DRAWING NO: 79.80095.1005
 SHEET 1 OF 2

DIMENSIONAL TOLERANCES ALL DIMENSIONS ARE REFERENCE ONLY TOLERANCES AS SHOWN

REVISIONS: 79.80095.0047

CUSTOMER -