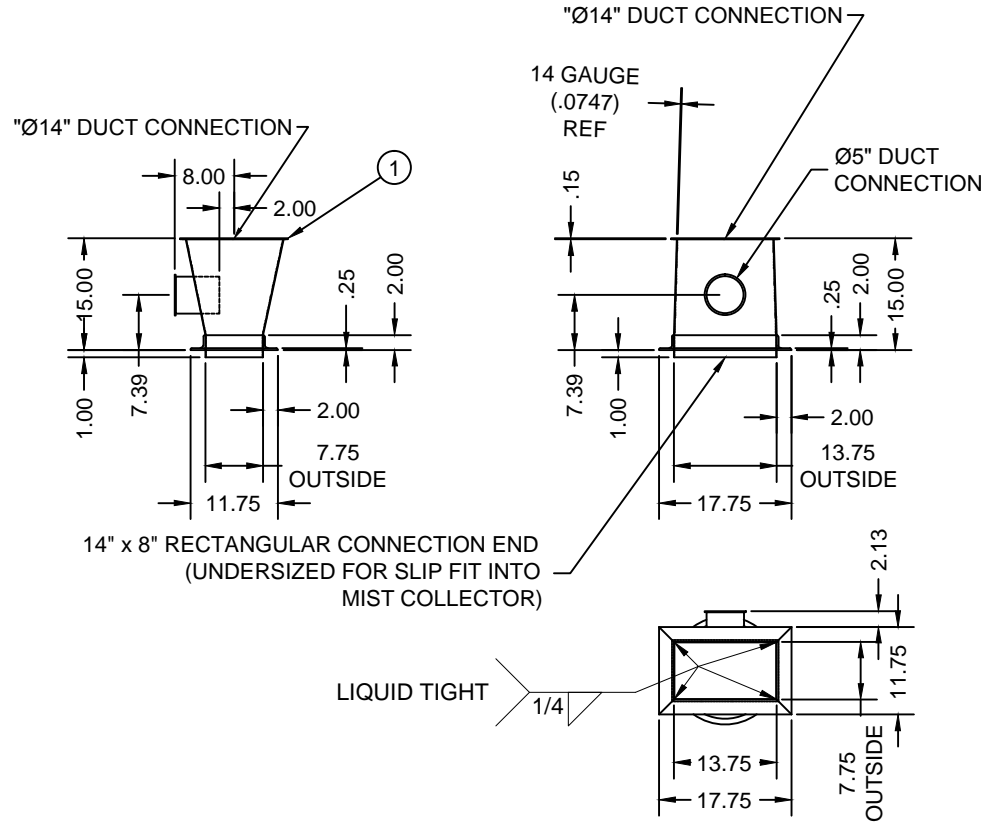


DO NOT SCALE DRAWING

2500 GPM MIST COLLECTION SYSTEM		
#	DUCT PART	QTY
1	ADAPTER, 14" x 8" TO Ø14" SEE DETAIL A	1
2	14" 1000mm TUBE	2
3	14" 1000mm SLIP TUBE	2
4	14" 90° ELBOW	1
5	LATERAL, 14" x 10" x 10"	1
6	CONE, 10" x 9"	2
7	9" 2000mm TUBE	1
8	9" 1000mm TUBE	4
9	9" 1000mm SLIP TUBE	4
10	9" 500mm TUBE	1
11	9" HOSE CONNECTION	1
12	9" HOSE (36" LG.)	1
13	10" 15° ELBOW	1
14	9" 45° ELBOW	1
15	9" 90° ELBOW	2
16	-	-
17	LATERAL, 9" x 6" x 6"	1
18	6" CAP	1
19	6" 1000mm TUBE	1
20	6" 1000mm SLIP TUBE	1
21	6" 60° ELBOW	1
22	6" HOSE CONNECTION	1
23	6" HOSE (36" LG.)	1

2500 GPM MIST COLLECTION SYSTEM		
#	DUCT PART	QTY
24	5" 1000mm SLIP TUBE	1
25	5" 500mm TUBE	3
26	5" 500mm SLIP TUBE	1
27	5" 200mm TUBE	1
28	5" 200mm SLIP TUBE	1
29	5" 90° ELBOW	2
30	5" 45° ELBOW	2
31	PULL RING CLAMP, 14"	7
32	U-SHAPE GASKET, 14"	7
33	O-RING GASKET 14"	3
34	PULL RING CLAMP, 10"	3
35	U-SHAPE GASKET, 10"	4
36	PULL RING CLAMP, 9"	17
37	U-SHAPE GASKET, 9"	17
38	O-RING GASKET 9"	5
39	WORM GEAR CLAMP 9"	2
40	PULL RING CLAMP, 6"	6
41	U-SHAPE GASKET, 6"	6
42	O-RING GASKET 6"	1
43	WORM GEAR CLAMP 6"	2
44	PULL RING CLAMP, 5"	12
45	U-SHAPE GASKET, 5"	12
46	O-RING GASKET 5"	3



DETAIL A

ADAPTER TRANSITION FROM COLLECTOR

** SEE SHEET #2 FOR PARTS LAYOUT **

SIZE "C" CAD DRAWING

				DIMENSIONAL TOLERANCES ALL DIMENSIONS ARE REFERENCE ONLY TOLERANCES AS SHOWN		SCALE 1:12		 ROCKFORD, ILLINOIS 61105 (815) 964-8661		TITLE G2500 VIAVENT MIST COLLECTION DUCT	
SYM	REVISIONS	DATE	BY	THIRD ANGLE PROJECTION		DESIGN BML				DRAWING NO. 79.80095.1015	
REF. DRAWING 79.80095.1005				ALL RIGHTS OF THIS DRAWING AND ANY RELATED INFORMATION ARE RESERVED AND NOT TO BE REPRODUCED OR TRANSMITTED IN ANY FORM OR BY ANY MEANS WITHOUT THE WRITTEN CONSENT OF BARNES INTERNATIONAL, INC.		DATE 11/10/2014				DRAWING NO. 79.80095.1015	
						CHECKED MB		CUSTOMER		REV -	