

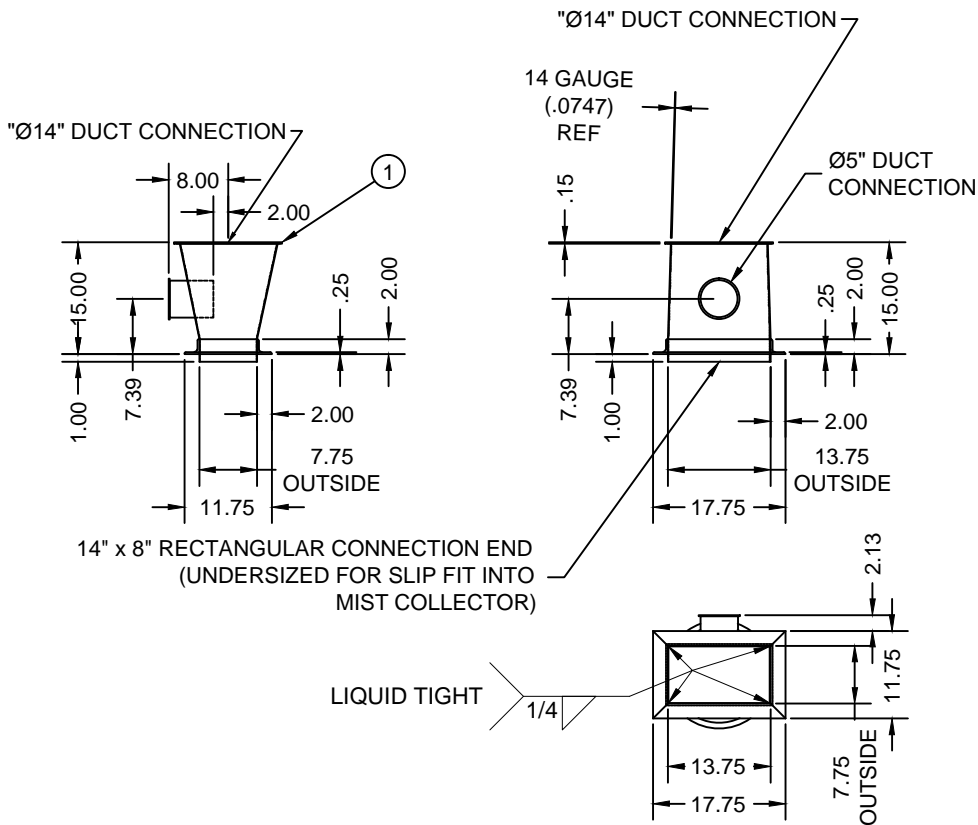
DO NOT SCALE DRAWING

2000 GPM MIST COLLECTION SYSTEM

#	DUCT PART	QTY
1	ADAPTER, 14" x 8" TO Ø14" SEE DETAIL A	1
2	14" 1000mm TUBE	2
3	14" 1000mm SLIP TUBE	2
4	14" 90° ELBOW	1
5	LATERAL, 14" x 10" x 10"	1
6	CONE, 10" x 9"	2
7	9" 2000mm TUBE	1
8	9" 1000mm TUBE	4
9	9" 1000mm SLIP TUBE	4
10	9" 500mm TUBE	1
11	9" HOSE CONNECTION	1
12	9" HOSE (36" LG.)	1
13	10" 15° ELBOW	1
14	9" 45° ELBOW	1
15	9" 90° ELBOW	2
16	-	-
17	LATERAL, 9" x 6" x 6"	1
18	6" CAP	1
19	6" 1000mm TUBE	1
20	6" 1000mm SLIP TUBE	1
21	6" 60° ELBOW	1
22	6" HOSE CONNECTION	1
23	6" HOSE (36" LG.)	1

2000 GPM MIST COLLECTION SYSTEM

#	DUCT PART	QTY
24	5" 1000mm SLIP TUBE	1
25	5" 500mm TUBE	3
26	5" 500mm SLIP TUBE	1
27	5" 200mm TUBE	1
28	5" 200mm SLIP TUBE	1
29	5" 90° ELBOW	2
30	5" 45° ELBOW	2
31	PULL RING CLAMP, 14"	7
32	U-SHAPE GASKET, 14"	7
33	O-RING GASKET 14"	3
34	PULL RING CLAMP, 10"	3
35	U-SHAPE GASKET, 10"	4
36	PULL RING CLAMP, 9"	17
37	U-SHAPE GASKET, 9"	17
38	O-RING GASKET 9"	5
39	WORM GEAR CLAMP 9"	2
40	PULL RING CLAMP, 6"	6
41	U-SHAPE GASKET, 6"	6
42	O-RING GASKET 6"	1
43	WORM GEAR CLAMP 6"	2
44	PULL RING CLAMP, 5"	12
45	U-SHAPE GASKET, 5"	12
46	O-RING GASKET 5"	3



DETAIL A

ADAPTER TRANSITION FROM COLLECTOR

Need
6" End Plate - 6.5"OD (165mm)

** SEE SHEET #2 FOR PARTS LAYOUT**

SIZE "C" CAD DRAWING

SYM	REVISIONS	DATE	BY

REF. DRAWING 79.80095.1005

DIMENSIONAL TOLERANCES
ALL DIMENSIONS ARE
REFERENCE ONLY
TOLERANCES AS SHOWN

THIRD ANGLE PROJECTION

ALL RIGHTS OF THIS DRAWING AND SPECIFIED REPRODUCTION RIGHTS ARE RESERVED AND NO PART MAY BE REPRODUCED OR TRANSMITTED IN ANY FORM OR BY ANY MEANS WITHOUT WRITTEN CONSENT.

SCALE
1:12

DESIGN
BML

DRAFT
BML

DATE
11/10/2014

CHECKED
MB

BARNES
INTERNATIONAL, INC.
ROCKFORD, ILLINOIS 61105
(815) 964-8661

VFC
ADVANCED FILTRATION CONCEPTS

SUPERIOR FILTRATION

TITLE	
G2500 VIAVENT MIST COLLECTION DUCT	
ORDER NO. -	SHEET 1 OF 2
DRAWING NO. 79.80095.1015	REV -

CUSTOMER -