

DO NOT SCALE DRAWING

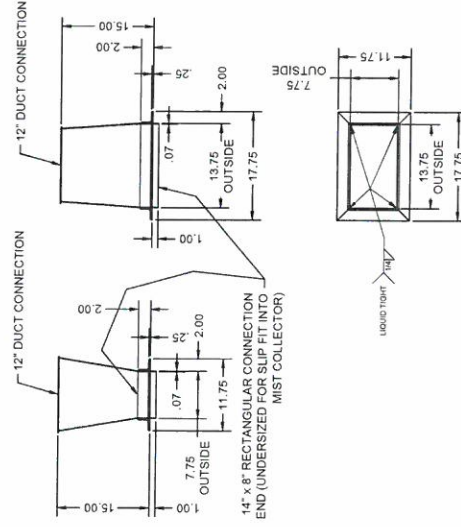
#	DUCT PART	QUANTITY
1	12" 1000mm SLIP TUBE	2
2	12" 1000mm TUBE	1
3	12" 2000mm TUBE	1
4	12" 90° ELBOW	2
5	12" 2000mm TUBE	1
6	12" 500mm SLIP TUBE	1
7	LATERAL, 12" x 12" x 4"	1
8	LATERAL, 12" x 10" x 8"	1
9	CONE, 10" x 8"	1
10	8" 2000mm TUBE	2
11	8" 1000mm SLIP TUBE	3
12	LATERAL 8" x 6 x 6	1
13	8" 1000mm TUBE	1
14	8" 90° ELBOW	1
15	CAP, 6"	1
16	6" 60° ELBOW	1
17	6" 1000mm SLIP TUBE	1
18	6" 1000mm TUBE	1
19	6" HOSE CONNECTION	1
20	HOSE, 26" FLEX CLEAR, 36" LG	1
21	HOSE, 26" FLEX CLEAR, 36" LG	1
22	8" 60° ELBOW	1
23	12" 500mm TUBE	1

#	DUCT PART	QUANTITY
24	4" 2000mm TUBE	1
25	4" 1000mm SLIP TUBE	1
26	4" 90° ELBOW	2
27	4" 60° ELBOW	1
28	4" 2000mm SLIP TUBE	1
29	4" 500mm TUBE	1
30	ADAPTER, 14" x 8" TO Ø12" SEE DETAIL A	1
31	PULL RING CLAMP, 12"	11
32	PULL RING CLAMP, 10"	1
33	PULL RING CLAMP, 8"	9
34	PULL RING CLAMP, 6"	5
35	U-SHAPE GASKET, 12"	8
36	U-SHAPE GASKET, 10"	1
37	U-SHAPE GASKET, 8"	7
38	U-SHAPE GASKET, 6"	4
39	O-RING GASKET 12"	3
40	O-RING GASKET 6"	2
41	O-RING GASKET 6"	1
42	WORM GEAR CLAMP 6"	2
43	WORM GEAR CLAMP 6"	2
44	PULL RING CLAMP, 4"	7
45	U-SHAPE GASKET, 4"	6
46	O-RING GASKET 4"	1

2500 GPM MIST COLLECTION SYSTEM cont.

2500 GPM MIST COLLECTION SYSTEM cont.

26" end cap



DETAIL A
ADAPTER TRANSITION FROM COLLECTOR

** SEE SHEET #2 FOR PARTS LAYOUT **

SCALE 1:12		TITLE G2500, 1500 CFM MIST COLLECTION DUCT PARTS	
DESIGN	DATE	ORDER NO.	SHEET OF 2
BY	6/19/15	DRAWING NO.	REV
BMM	CHECKED	79.80095.1019	-
DIMENSIONAL TOLERANCES ALL DIMENSIONS ARE REFERENCE ONLY TOLERANCES AS SHOWN		 	
SYMBOLS	REVISIONS	REF. DRAWING 79.80095.1005 & 79.80095.1007 CUSTOMER -	
DATE	BY		
79.80095.1005 & 79.80095.1007			