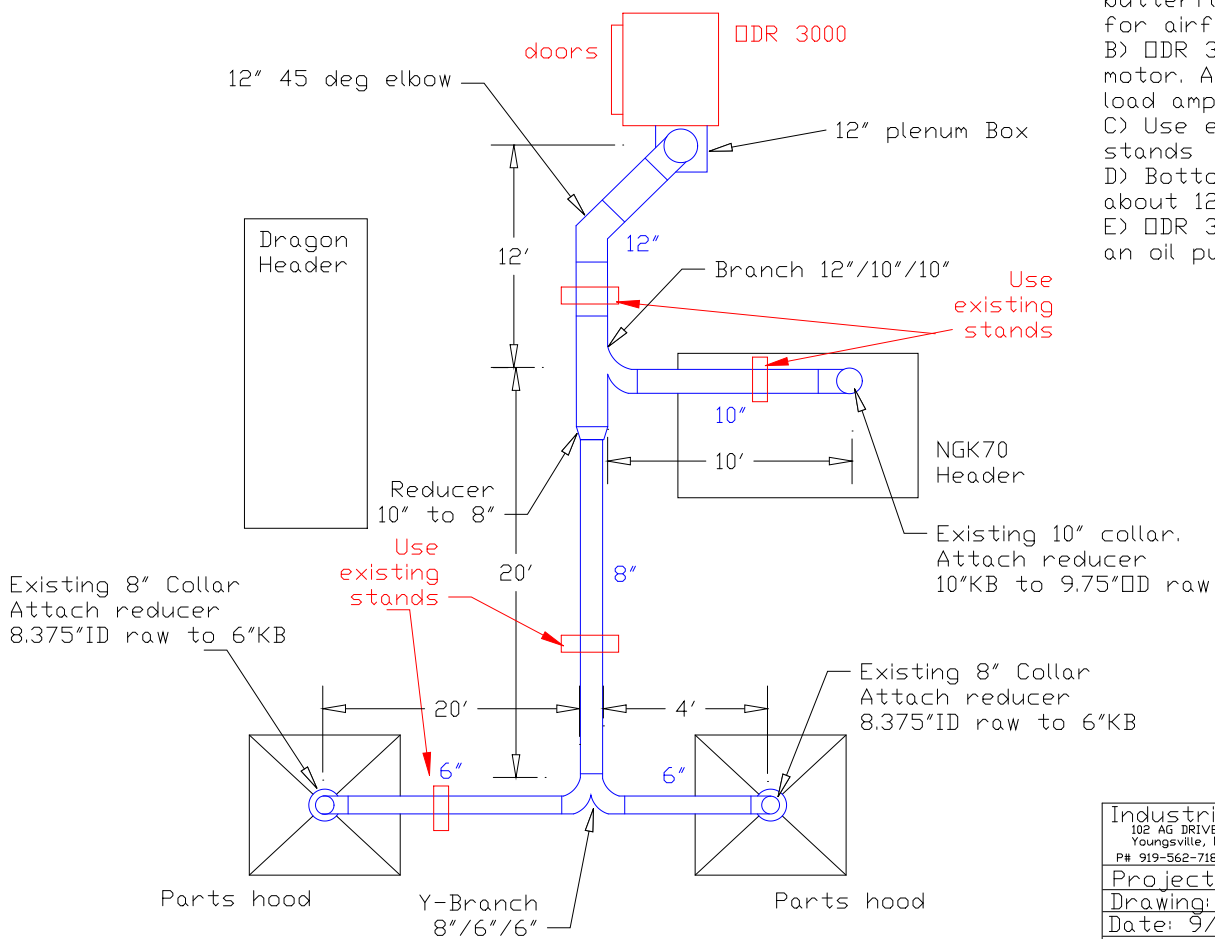


# Ductwork Layout for NGK70 Header

## Plan View



- Notes:
- A) All drops will have a butterfly damper to allow for airflow adjustment.
  - B) DDR 3000 had a 10HP motor. AT 460volts the full load amps are 14.5
  - C) Use existing ductwork stands
  - D) Bottom of ductwork about 12' off of floor
  - E) DDR 300 has comes with an oil pump.

Industrial Air Quality		<b>IAQ</b>
102 AG DRIVE Youngsville, NC 27596		
P# 919-562-7181 F# 919-562-7182		
Project: Blue Ridge Metals		
Drawing: Ductwork layout		
Date: 9/15/08		Drawn by: RAV
Sheet No:		