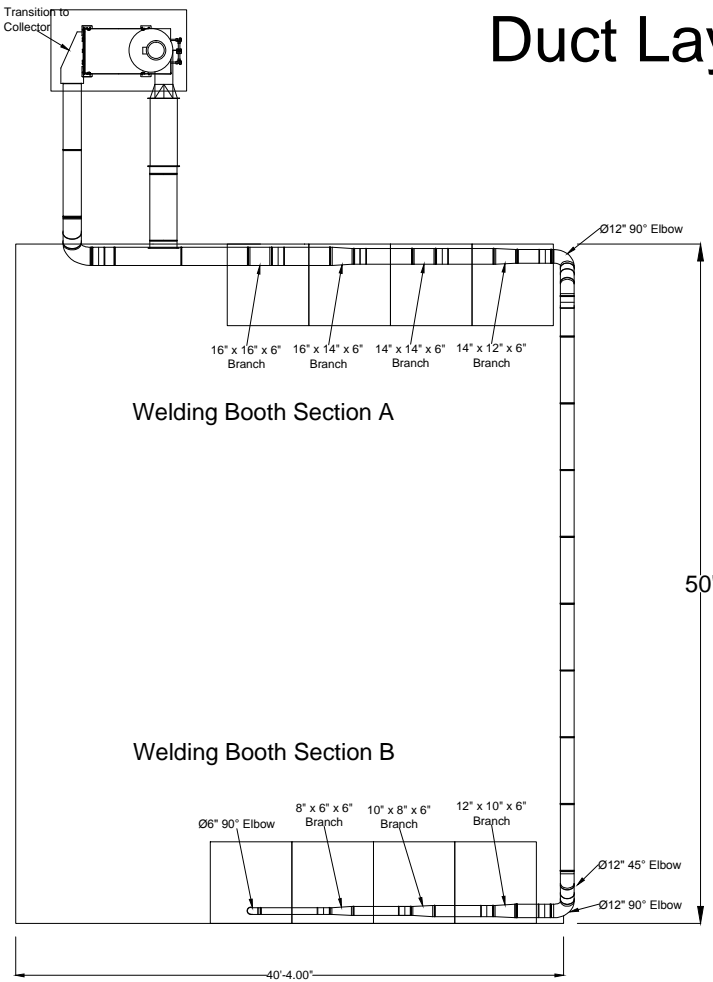
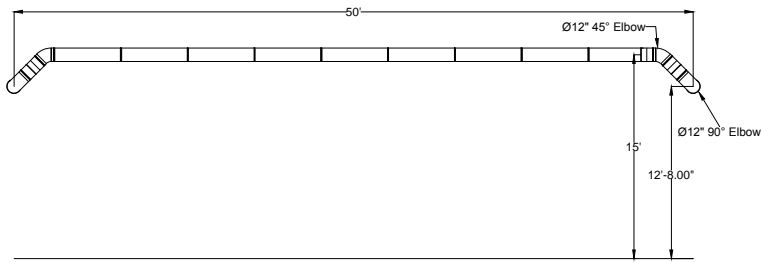


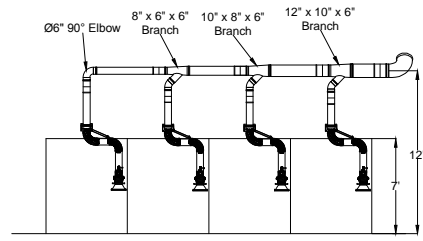
Angelo State University Duct Layout



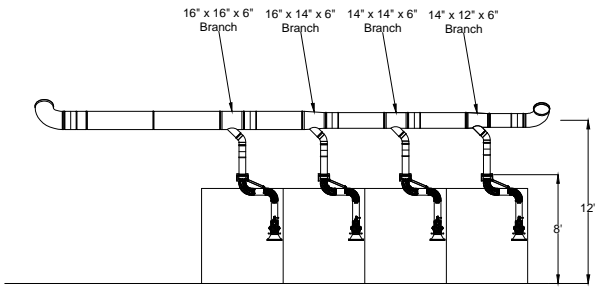
**Duct Layout
Plan View**



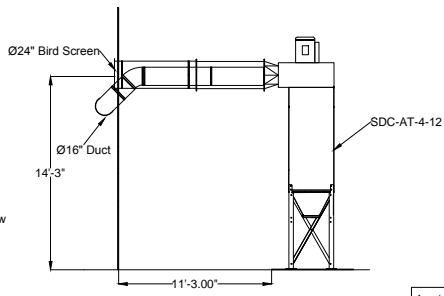
Ø14\"/>



**Welding Booth Section B
Elevation View**



**Welding Booth Section A
Elevation View**



**SDC-AT-4-12
Elevation View**

- Notes:**
1. K&B duct to connect to an SDC-4-12 with a 20 HP Fan
 2. Support duct from ceiling
 3. Return air at Ø 24\"/>

<p>Avani</p> <p>Avani Environmental Intl. 95 Cypress Drive Youngsville, NC 27596 Ph 919-570-2862 F# 919-570-2863</p>	
<p>Project: Angelo State University</p>	
<p>Drawing: Duct Layout</p>	
<p>Date: 6/17/2013</p>	<p>Drawn by: MDT</p>
<p>Sheet No: 1 Of 1</p>	