

NOTES:

1. ALL LOCATIONS AND DISTANCES ARE APPROX.
2. VACUUM EQUIPMENT AREA TO BE PROPERLY VENTILATED.
3. ALL HANGING VACUUM DROPS REQUIRE 1/2" AIR DOWN AT CEILING LEVEL, JUST BELOW TRUSS, WITH SHUTOFF VALVE, TO BE 12" OFF OUR VACUUM DROP AND REDUCED DOWN AS NECESSARY BY OTHERS.
4. ALL WALL/SURFACE MOUNT DROPS REQUIRE 1/2" AIR DOWN TO 48" A.F.F. WITH SHUTOFF VALVE AND CUSTOMER SUPPLIED DISCONNECT WITHIN 6" OF VACUUM DROP BY OTHERS.
5. PULSE JET SEPARATORS REQUIRE 1/2" AIR DOWN, TO BE CONNECTED TO RESERVOIR TANK OF SEPARATOR BY OTHERS, MUST BE CLEAN, DRY, FILTERED AIR.
6. CUSTOMER TO VERIFY THE FOLLOWING:
 - a) ALL LOCATIONS
 - b) ALL DISTANCES
 - c) BUILDING ELEVATION AND ACCESS
 - d) LINE VOLTAGE

VAC. SYSTEM LEGEND:

- SINGLE WORKSTATION 9
- DOUBLE WORKSTATION 1

REVISIONS

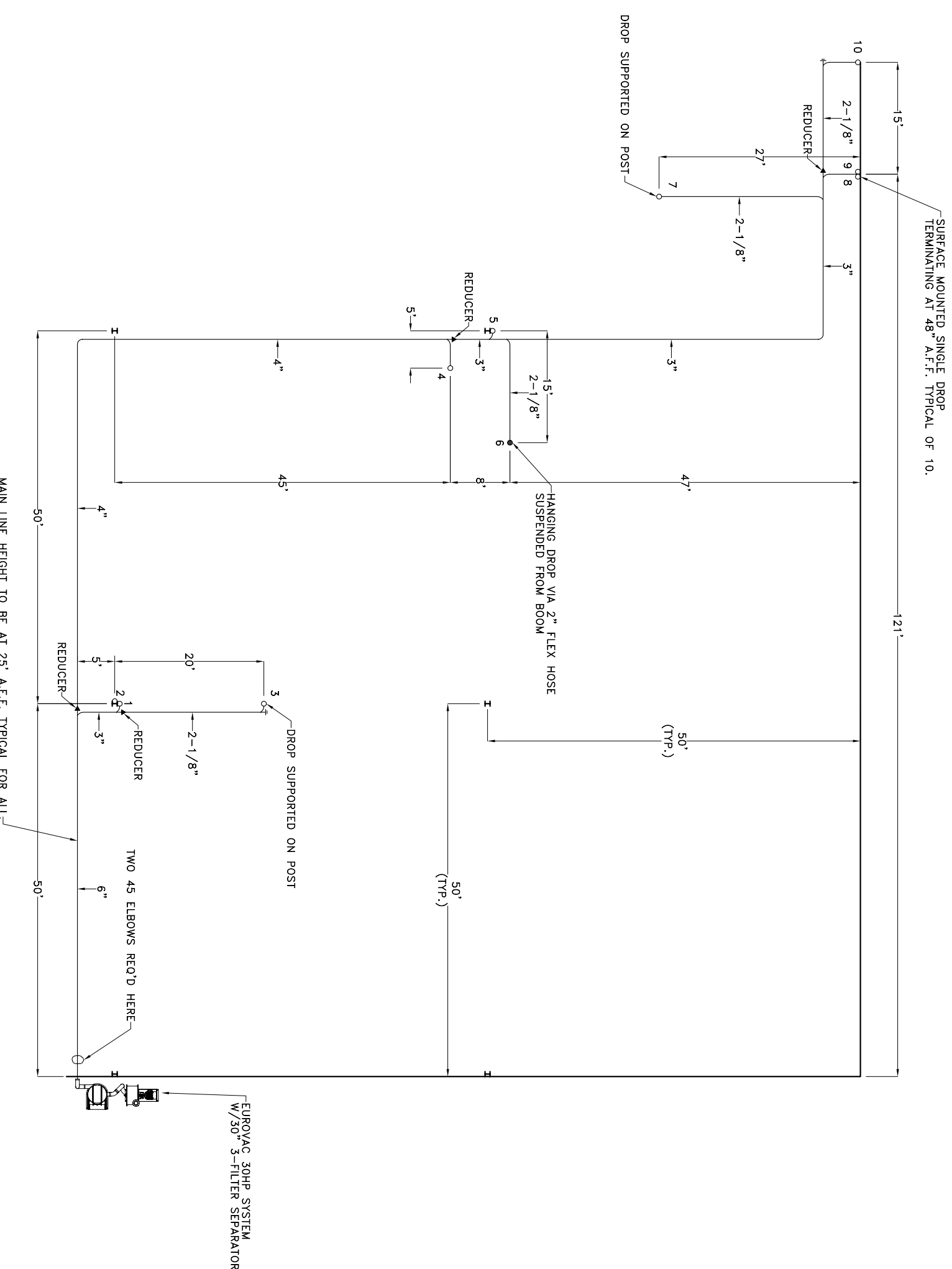
REV. NO.	DATE	BY
REV. A	2/06/08	KG
REV. B	2/07/08	KG
REV. C		

CUSTOMER: COASTAL PLAIN VENTURES, LLC
 SWAINSBORO, GA

SHEET TITLE: EUROVAC VACUUM SYSTEM
 EQUIPMENT/TUBE LAYOUT

DRAWN BY: KG	DATE: 2/06/08
CHECKED BY: EE	SCALE: 1/16"=1'
APPROVED BY:	JOB NO.: 21896

THIS DOCUMENT CONTAINS PROPRIETARY AND CONFIDENTIAL DATA OF EUROVAC, NO DISCLOSURE REPRODUCTION OR USE OF ANY PART THEREOF, MAY BE MADE WITHOUT WRITTEN PERMISSION OF THE COMPANY.



MAIN LINE HEIGHT TO BE AT 25' A.F.F. TYPICAL FOR ALL.