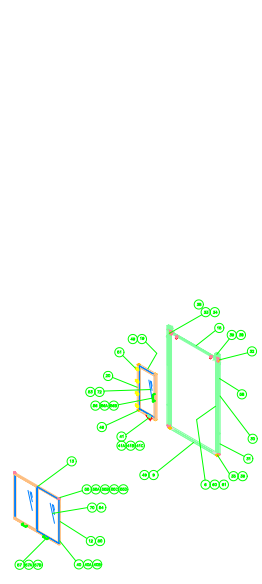
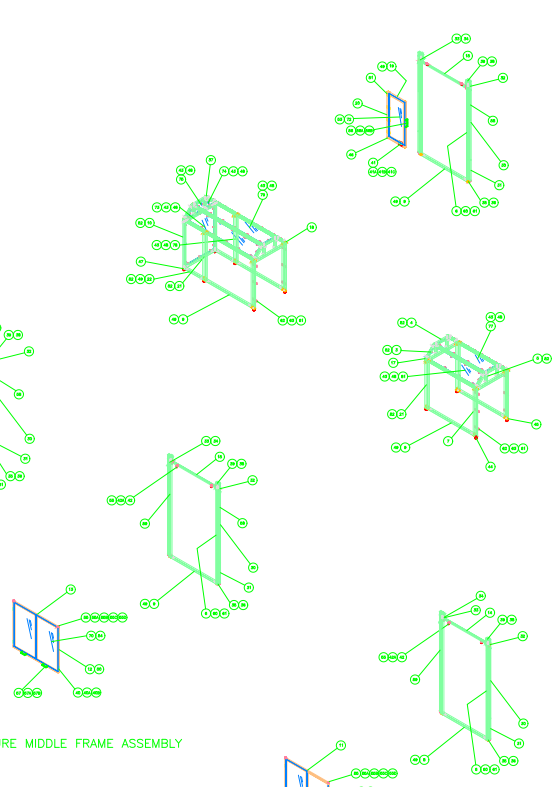


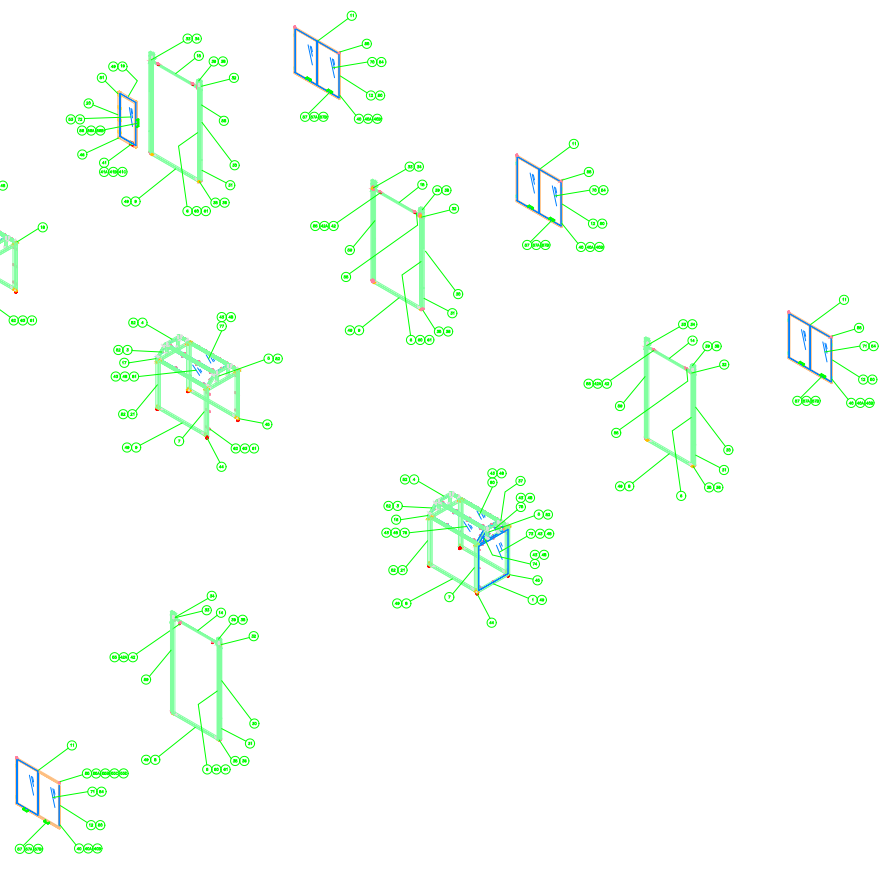
ENCLOSURE LEFT SIDE ASSEMBLY



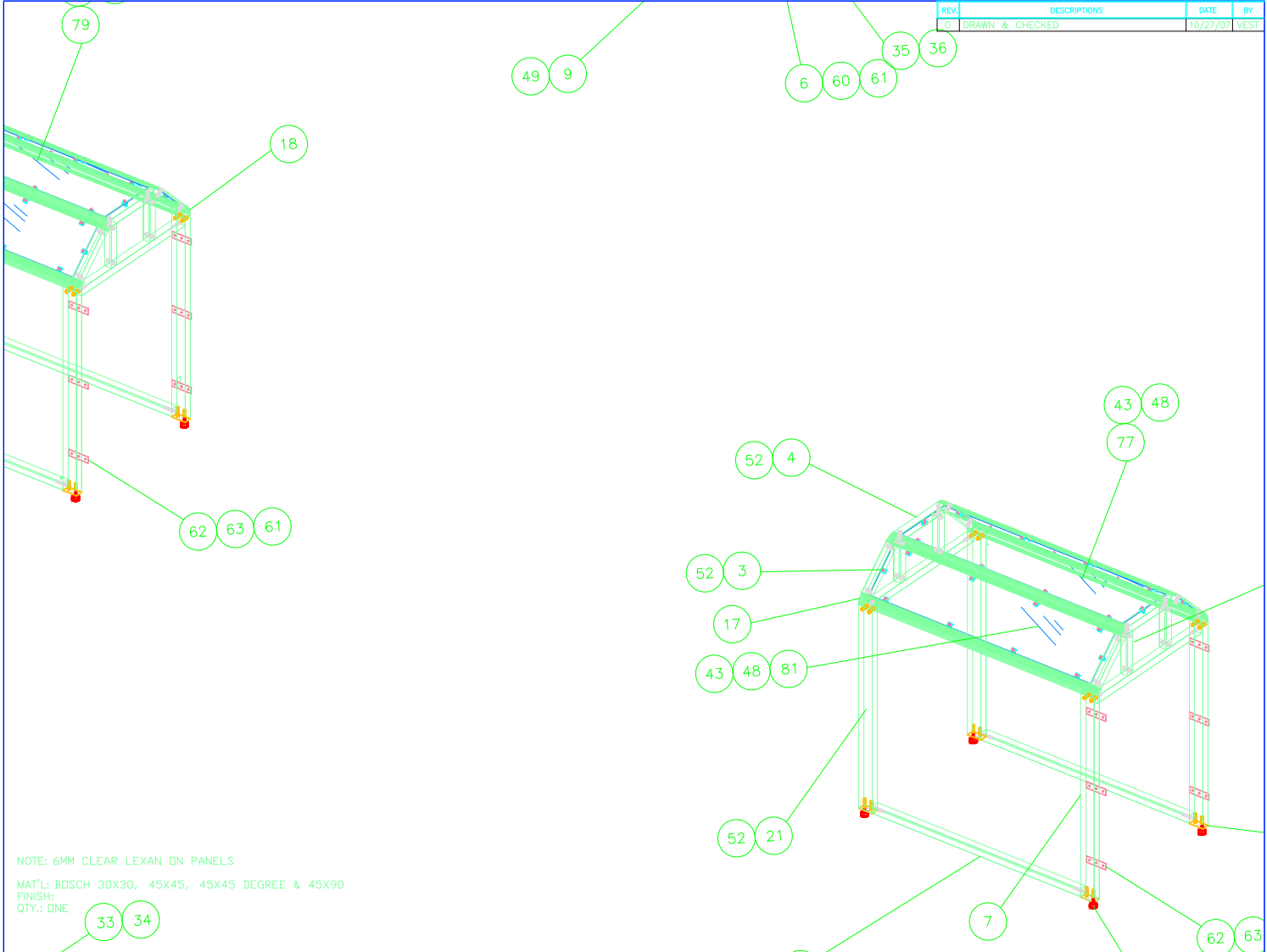
ENCLOSURE MIDDLE FRAME ASSEMBLY



ENCLOSURE RIGHT SIDE ASSEMBLY

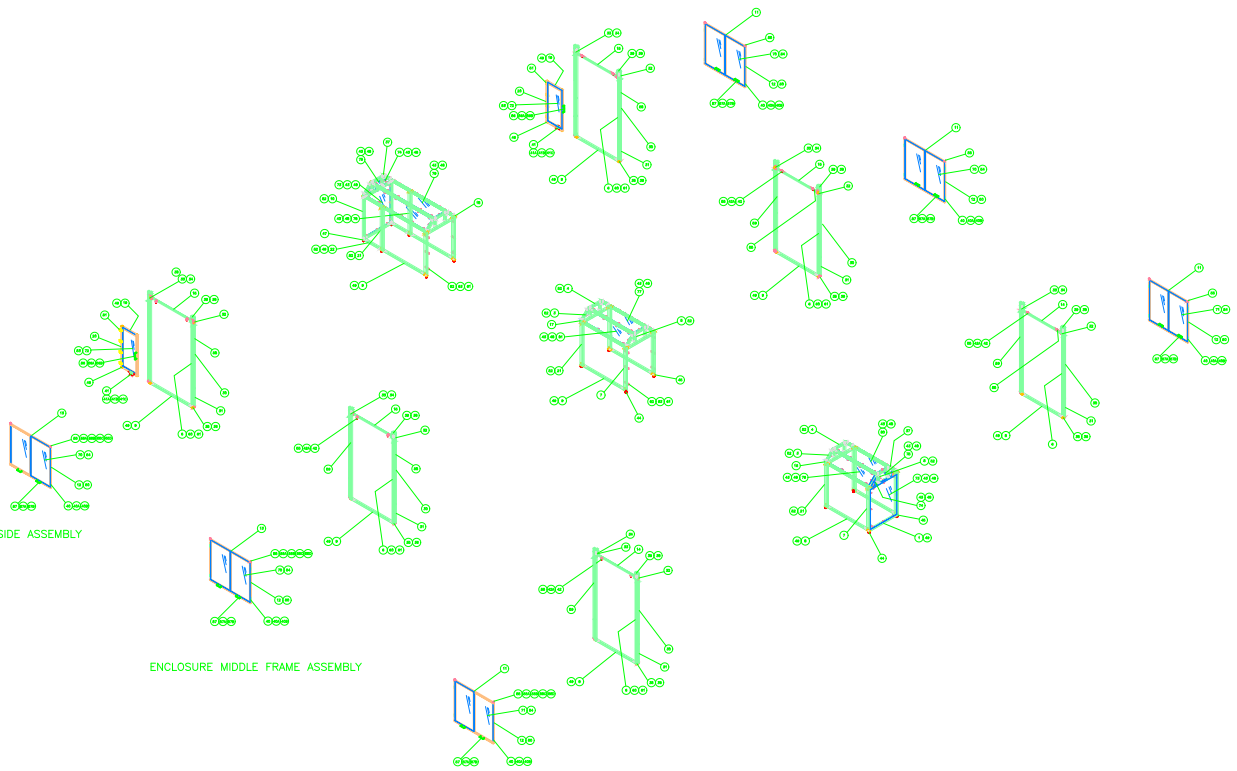


REV.	DESCRIPTIONS	DATE	BY
0	DRAWN & CHECKED	10/27/07	VEST



NOTE: 6MM CLEAR LEXAN IN PANELS
 MAT'L: BOSCH 30X30, 45X45, 45X45 DEGREE & 45X90
 FINISH:
 QTY.: DNE

33 34



ENCLOSURE LEFT SIDE ASSEMBLY

ENCLOSURE MIDDLE FRAME ASSEMBLY

ENCLOSURE RIGHT SIDE ASSEMBLY

UNLESS OTHERWISE SPECIFIED: DIMENSIONS ARE IN INCHES TOLERANCES		Automation Technology, Inc.				
DECIMALS ANGULAR		Ph: 704.784.8101		Fx: 704.784.8105		
.XX ± .05 ± 0.5°		INDUSTRIAL AIR QUALITY				
.XXX ± .010		ASR ENCLOSURE				
DO NOT SCALE DRAWING		SIZE	REF. ASSY. DWG.	DWG .NO.	REV	
APPROVED BY: _____	<p style="text-align: center;">CONFIDENTIAL</p> <p>THIS DOCUMENT CONTAINS CONFIDENTIAL INFORMATION AND IS FURNISHED TO THE CUSTOMER OR USER FROM AUTOMATION TECHNOLOGY, INC. USE OR REPRODUCTION OF THIS DOCUMENT IS RESTRICTED WITHOUT WRITTEN CONSENT FROM AUTOMATION TECHNOLOGY, INC.</p>	DRAWN	DATE	A	IAQ-100001.0 ASREB	X
DATE: _____		DWS	11/09/07			
		CHECKED	DATE	SCALE	MAT'L	BOSCH MGE
	DESIGN	DATE				
	XXX	X/XX/XX				