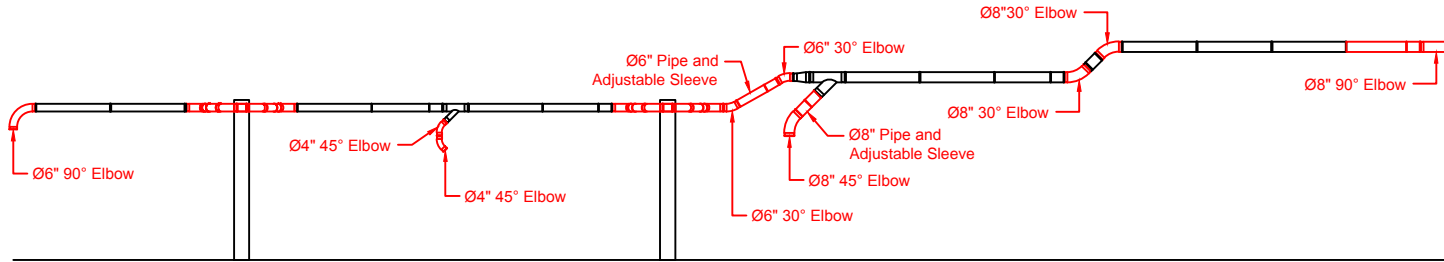
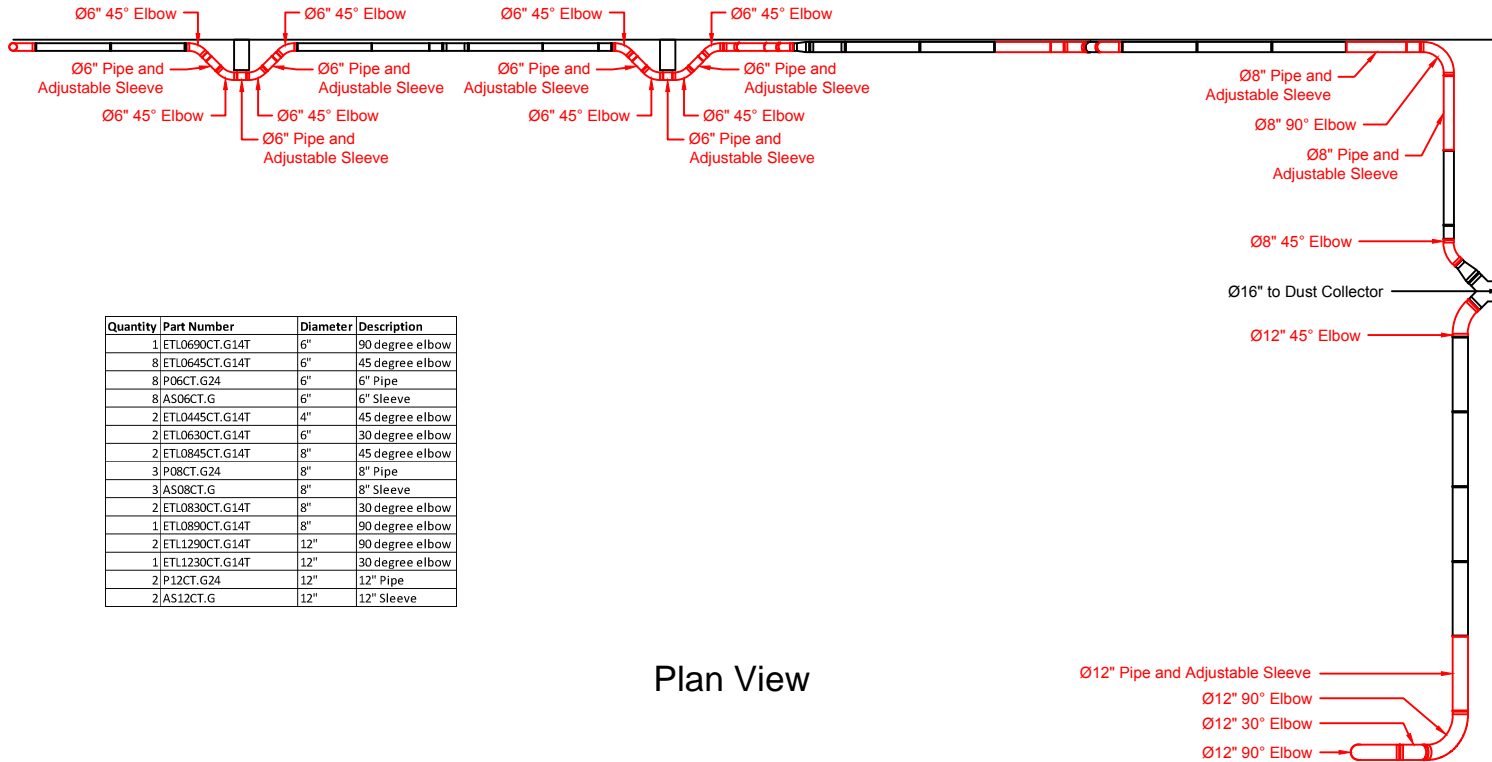


Altec Industries SO22295 Duct Layout



Elevation View - North Wall



Quantity	Part Number	Diameter	Description
1	ETL0690CT.G14T	6"	90 degree elbow
8	ETL0645CT.G14T	6"	45 degree elbow
8	P06CT.G24	6"	6" Pipe
8	AS06CT.G	6"	6" Sleeve
2	ETL0445CT.G14T	4"	45 degree elbow
2	ETL0630CT.G14T	6"	30 degree elbow
2	ETL0845CT.G14T	8"	45 degree elbow
3	P08CT.G24	8"	8" Pipe
3	AS08CT.G	8"	8" Sleeve
2	ETL0830CT.G14T	8"	30 degree elbow
1	ETL0890CT.G14T	8"	90 degree elbow
2	ETL1290CT.G14T	12"	90 degree elbow
1	ETL1230CT.G14T	12"	30 degree elbow
2	P12CT.G24	12"	12" Pipe
2	AS12CT.G	12"	12" Sleeve

Plan View

Notes:

1. Support from side wall via unistrut
2. Replace old elbows with new 2.5D elbows
3. Reuse as much old duct as possible
4. Avani Environmental standard installation crew is quoted out per day based on the above drawings and approvals. Any changes, modifications, downtime, or inability to perform our work above and beyond the control of Avani Environmental will charge an additional \$1,000 per work day (5 or more hours) per crew above what was initially quoted.

Avani Environmental Intl. Inc.
95 Cypress Drive
Youngsville, NC 27596
P# 919-570-2862 F# 919-570-2863

Avani

Project: Altec SO22295

Drawing: Duct Layout

Date: 12/16/14

Drawn by: MDT

Sheet No:

Rev 0