

OSKAR Dust Collector

General Safety Information

MACHINE WARNING SIGNS

▲ DANGER

Indicates an imminently hazardous situation which, if not avoided, will result in death or serious injury.

▲ WARNING

Indicates a potentially hazardous situation which, if not avoided, could result in death or serious injury.

▲ CAUTION

Indicates a potentially hazardous situation which, if not avoided, may result in minor or moderate injury.

Used without the safety alert symbol (▲) indicates potentially hazardous situation which, if not avoided, may result in property damage.



Warning of electric shock



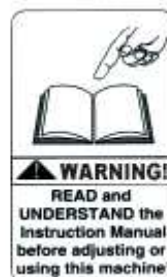
Do not expose the equipment to rain or use in damp locations.



Figure 1



Do not use the equipment around flammable products, if not avoided, sparks can ignite vapors from flammable products. Read and understand all warnings and operating instructions before using this equipment. Failure to follow all instructions may result in electric shock, fire, and/or serious personal injury or property damage.



Please read and save these instructions. Read carefully before attempting to assemble, install, operate or maintain the product described. Protect yourself and others by observing all safety information. Failure to comply with instructions could result in personal injury and/or property damage! Retain instructions for future reference.



OSKAR Dust Collector

TABLE OF CONTENT

MACHINE WARNING SIGNS 1

Specifications..... 2

ADDITIONAL DUST COLLECTOR SAFETY RULES..... 4

Assembly 5

Installation 5

ELECTRICAL INSTALLATION 5

Operation 6

Repair Parts Illustration 9

Appendix 26

Specifications

Motor 30 HP x 2 (22380 W x 2)

Air Volume (C.F.M.)28500 Ft³/Min (807 M³/Min)

Inlet Size19.6" x 15.7" (50 x 40 cm)

Packing Size (L x W x H)

 Main.....247" x 111" x 79" (627.5 x 282 x 201.5 cm)

 Stand.....246" x 83" x 78" (627 x 211.5 x 200 cm)

 Airtank Base.....236" x 23.4" x 18.9" (599.5 x 59.5 x 48 cm)

 Blower.....106" x 86.6" x 70" (270 x 220 x 178.5 cm)

Overall Machine Weight 14947 lbs (6780 kgs)

Please read and save these instructions. Read carefully before attempting to assemble, install, operate or maintain the product described. Protect yourself and others by observing all safety information. Failure to comply with instructions could result in personal injury and/or property damage! Retain instructions for future reference.



OSKAR Dust Collector

General Safety Information

(Continued)

▲ WARNING

*Use this product
carefully to*

effectively avoid any possible danger.

*Observe the following safety
regulations to avoid bodily injury due
to electrocution during use.*

Read this Manual carefully before operating the product and preserve the Operation Manual properly.

1. Keep work area clean and organized.
 - A disorderly working environment will cause inconvenience and danger during operation.
2. Check if the working environment is suitable for using the product.
 - Do not use the product in a humid environment.
 - Use the product in a good working environment to reduce risks.
 - Do not use the product in a flammable gas or liquid environment to avoid danger.
3. Keep other persons away from the product, except for the operator, to avoid danger.
 - Do not let children get close to the product. All wires used by the product

shall be in a safe location to prevent children from touching them.

4. All tools shall be safely stored.
 - When the tools are not used, please store them in a dry place safely beyond the reach and access of children.
5. If the machine breaks down, contact a service technician. Do not attempt to repair and possibly damage the machine.
6. When using the product, be sure to put on a dust collecting suit and mask.
7. Use the electrical wires correctly.
 - During use, do not drag the electrical wires forcefully. Do not use these wires if fraying or current leakage occurs to avoid injury to the operator.
8. Before replacing parts, shut off power to the machine.
 - Check that the switch is in "on" or "off" position. Do not attempt the replacement when the machine is running. To replace parts or filter material, make certain that the switch is "off".
9. Use the power cord correctly. The total length of power cord shall not exceed 10 feet to avoid low power due to a drop in voltage and to prevent a possible hazard.

Please read and save these instructions. Read carefully before attempting to assemble, install, operate or maintain the product described. Protect yourself and others by observing all safety information. Failure to comply with instructions could result in personal injury and/or property damage! Retain instructions for future reference.



OSKAR Dust Collector

▲ WARNING

When connecting the product, always follow the instructions in the Operation Manual to avoid injuries.

10. Care and Maintenance:

- Confirm that the parts/accessories have been fully assembled and will not adversely affect the machine operation.
- Check if the machine is operated properly.
- Replace damaged parts or accessories according to the instructions of the Manual. If the said instructions are not specified in the Manual, have a professional technician carry out the maintenance or replacement.
- Check that the electrical specifications of this machine meet safety requirements, and that the maintenance is carried out by a professional technician. Use original manufacturer's parts and accessories to avoid injury.
- If a problem occurs, contact your dealer immediately.

ADDITIONAL DUST COLLECTOR SAFETY RULES

The Dust Collector can be dangerous if it is operated incorrectly. Therefore, the product must be used cautiously to avoid causing a

hazard or damage. Unnecessary injuries may occur by failing to follow the instructions of the Safety Rules Manual. Be sure to put on protection equipment or suit that can protect your body, such as helmet and eye mask to avoid injuries from occurring. If any doubts or any unfitness occurs during use, be sure to stop the operation immediately. Keep in mind that the user shall be liable for using according to the specified safety rules and for operating the machine correctly.

1. Read this Manual carefully before operating the product.
2. Be sure to follow local electrical and safety regulations and observe the electrical safety standards practiced in the relevant area. All electrical wire connections and installation shall be carried out by a professional technician.
3. Do not operate the product near flammable materials, as sparks may ignite these materials and cause an explosion. Please confirm there aren't any flammables near the working site to avoid hazard.
4. This product is suitable for collecting dusts. Do not use it in collecting iron chips and dust at the same time to avoid producing sparks.
5. Before replacement of parts or filter materials, be certain that the switch is

OSKAR Dust Collector

disconnected.

6. Do not kink the power cord and keep it away from oil, chemicals or flammables.
7. Check that the voltage, phase count and grounding wire match the machine requirements.
8. When the fan blades are operated at high speed, do not reach hand near these blades to prevent finger from breaking or clothes/necktie from getting caught. Do not put the hand or foreign matter into the air inlet to avoid getting caught in the high-speed rotation of fan blades.
9. When not in use, all air inlets of Dust Collecting Machine shall be covered.

Assembly

Do not connect the Dust Collecting Machine before the assembly is finished and you have read and understood all of the precautions stated in the Manual.

NOTE: For correct assembly, refer to the Assembly Procedures.

Installation

MOVING AND TRANSPORTATION

The net weight of this machine is about 624 lbs. It CANNOT be handled and transported without the help of lifting tools. For your safety, read all instructions carefully.

Do not move without the help of others

to avoid causing danger.

ELECTRICAL INSTALLATION

POWER CONNECTION

1. Confirm that the power is properly connected under normal power supply condition. It is recommended to provide manual shutdown device before connecting power.
2. It is recommended to protect the control equipment with suitable grade of fuse, and the length of fuse and power cord shall not be over 10 feet.



SHUTDOWN

1. Disconnect power by manual method.
2. When stopping operation, check if the switch is under off status.

EARTHING WIRE

Connect yellow/green wires to the earthing wire power jack. Confirm that the earthing wire has been properly connected before connecting main power cord to the machine at all times.



Do not disconnect the wiring jack

before cutting off power!

POWER INSTALLATION AND STORAGE

The electrical power is configured as following. If conditions are beyond the scope stated below, then it is required to ensure that the power is well arranged and safe.

OSKAR Dust Collector

- Ambient temperature: Between 41°F and 131°F. If the time is over 24 hours, then the ambient average temperature shall not be over 122°F.
- Humidity: Between 30% and 95%
- Altitude: 3,280 feet
- Moving and Storing: -13°F to 131°F. For short-time storage (less than 24 hours), the storage temperature can be up to 158°F.

Operation

PRIOR TO START UP

Purpose: The Dust Collector is specially suitable for treating the dust generated during ordinary dust collecting work, which can effectively collect and screen the smoke resulting from the dust collecting work in maintaining the air quality of the working environment.

- Before starting the machine, be sure to read this Manual carefully. Before starting the machine, check if relevant safety protection measures have been taken according to the Manual. Before starting the machine, watch the motor turning direction according to the instruction of arrow direction.

SDC-28500 Magnetic Valve Operating Illustration

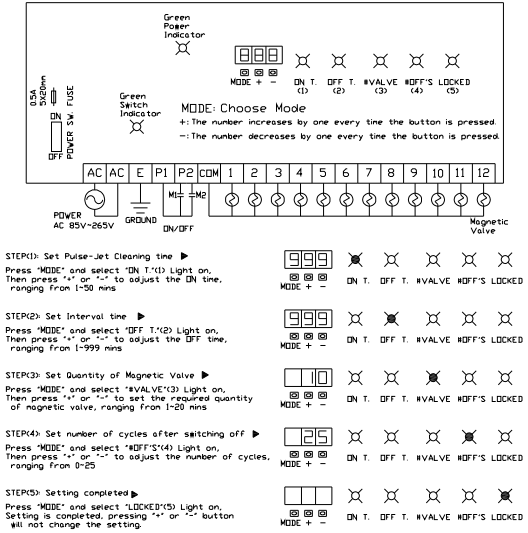


Figure 2 – Electrical Circuit Diagram I

SDC-28500 Schematics

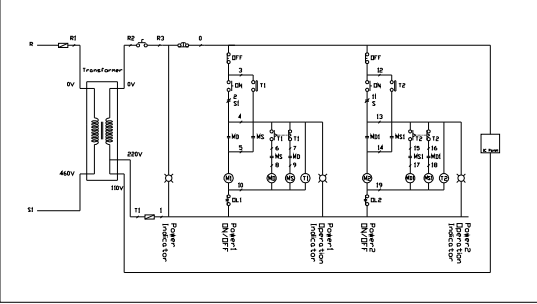


Figure 2 – Electrical Circuit Diagram II



OSKAR Dust Collector

Under normal operation status, use such I/O button.

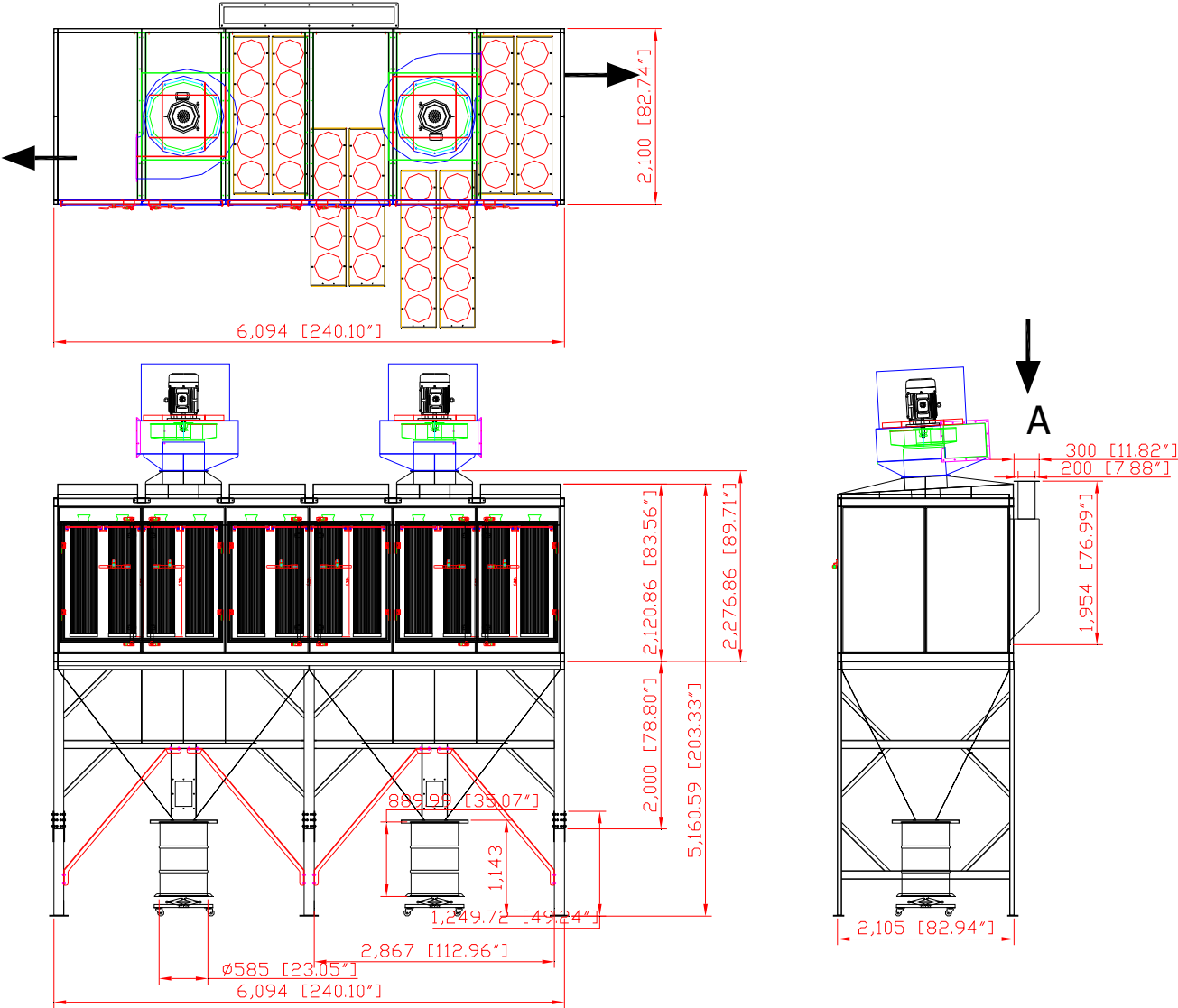
Unpacking

The machine should be unpacked carefully. Check if the machine and components are consistent with those indicated in the Parts List. If any doubt arises or when the components are incomplete, contact your dealer.



OSKAR Dust Collector

Dimensions (in mm & inches)



Please read and save these instructions. Read carefully before attempting to assemble, install, operate or maintain the product described. Protect yourself and others by observing all safety information. Failure to comply with instructions could result in personal injury and/or property damage! Retain instructions for future reference.



OSKAR Dust Collector

Repair Parts Illustration

SDC-28500 (SV-6000) Assembly Procedures

A. 【Lower Base】 Stand:



【1】 Disassemble the cardboard and bubble wrapper from the Stand.



【2】 Machine Body – Lower Section.



Disassemble (6) Trays under the Stands.

Please read and save these instructions. Read carefully before attempting to assemble, install, operate or maintain the product described. Protect yourself and others by observing all safety information. Failure to comply with instructions could result in personal injury and/or property damage! Retain instructions for future reference.



OSKAR Dust Collector



【3】 Apply grease on (6) Stands.



【4】 Apply grease on the Stands.



【5】 Insert the Machine Lower Section into the (3) Stands.

OSKAR Dust Collector



【6】 After insertion, fasten (12) pcs of 1/2"×1-1/4" Hex Screws, (24) pcs of 1/2"×OD23*2t Flat Washers, (12) pcs of Spring Washers and 1/2" Hex Nuts at the six locations.

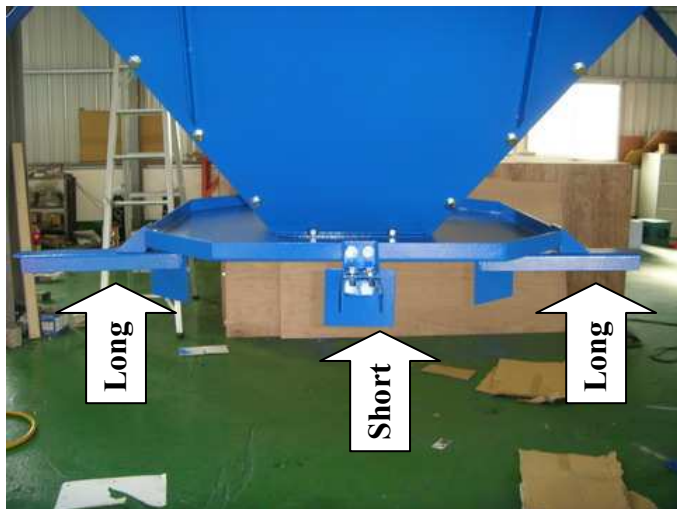


【7】 Disassemble the Bubble Wrapper from the Supporting Shaft.

【8】 Fasten each Supporting Shaft with (4) pcs of 1/2"×1-1/4" Hex Screws, (8) pcs of 1/2"×OD25*2t Flat Washers, (4) pcs of 1/2" Spring Washers and (4) pcs of 1/2" Hex Nut. Fix the Supporting Shafts under the Machine Lower Section, above the Stands. There are a total of (8) Supporting Shafts.

B. Drum Base:

OSKAR Dust Collector



- 【1】** Fix the (3) Gallon Drums to the L-shape Frame using (2) pcs of 3/8"×3/4" Hex Screw and (4) pcs of 3/8"×OD23×2t Flat Washers and (2) pcs of 3/8" Hex Nut.

Pay attention to the Directions when fixing.



OSKAR Dust Collector



【2】 Position the Gallon Drum to the Drum Base

【3】 Adjust the Drum Fixing Base and push the Gallon Drum to fix the position.

【4】 Gallon Drum Base is able to adjust its height.

C. 【Machine Body】 Inlet Base:



【1】 Assemble the Inlet Base to the back of Machine Body.

OSKAR Dust Collector

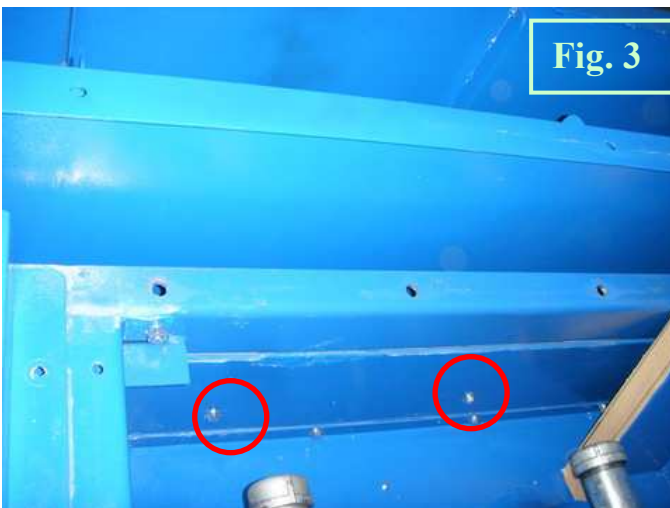
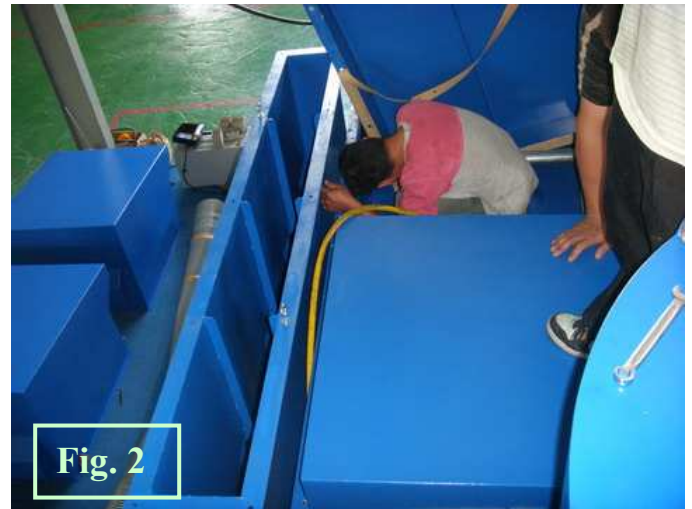
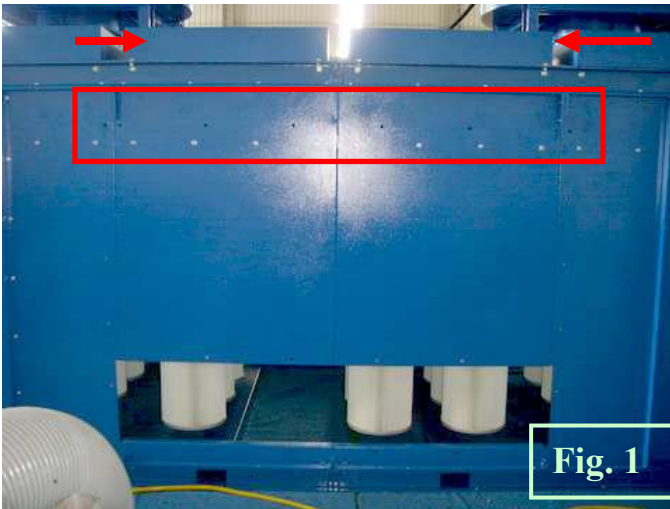


- 【2】** Hang the Inlet and fix the surrounding parts with (16) pcs of 3/8”*1” Hex Screw, (32) pcs of 3/8”*OD23*2t Flat Washer, (16) pcs of 3/8” Spring Washer and (16) pcs of 3/8” Hex Nut to the Machine Body.



- 【3】** Open the door in the middle of the Machine Body and take out the Cartridges.
- 【4】** Use (12) pcs of 3/8”*1” Hex Screw, (24) pcs of 3/8”*OD23*2t Flat Washer, (12) pcs of 3/8” Spring Washer and (12) pcs of 3/8” Hex Nuts to fix the lower section of Inlet Base to the Machine Body. Then put the Cartridges back to the Machine Body.

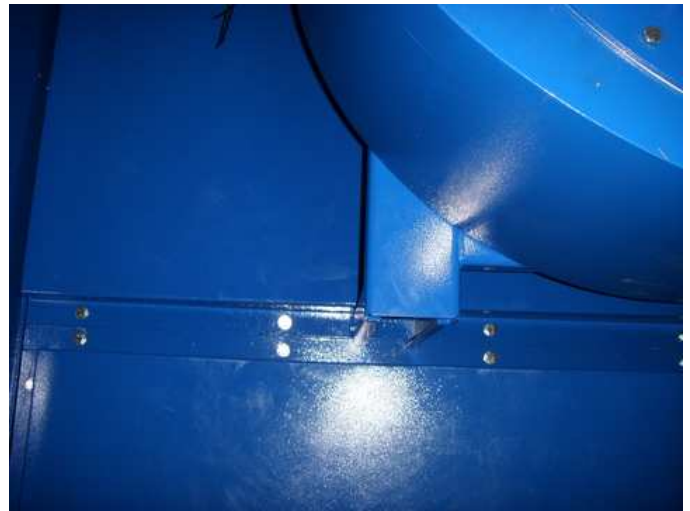
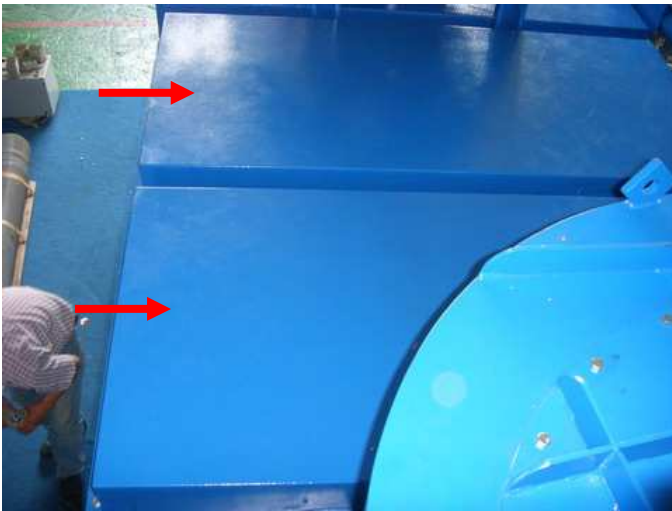
OSKAR Dust Collector



【5】If fastening the 8 positions for the Inlet Base (Fig. 1), it is required to open the two roofs at the top (Fig. 2)

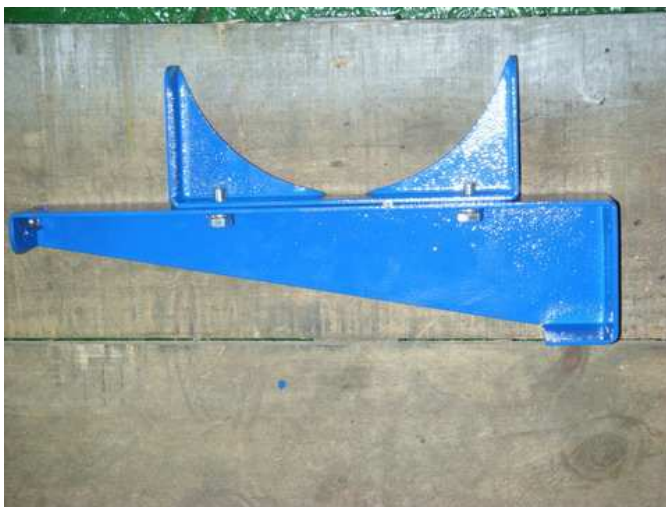
【6】 (Fig. 3) & (Fig. 4) Use (8) pcs of 3/8"×1" Hex Screw, (16) pcs of 3/8"×OD23×2t Flat Washer, (8) pcs of 3/8" Spring Washer and (8) pcs of 3/8" Hex Nut from inside to outside of the Machine Body and fix with the Inlet Base.

OSKAR Dust Collector



【7】Use (20) pcs of 1/2"×3/4" Hex Screw and (20) pcs of 1/2"×OD25×2t Flat Washers to fix the (2) pcs roofs to the Machine Body.

D. 【Machine Body】 Air Pulse-Jet Fixing Frame:



OSKAR Dust Collector



- 【1】** Fix six Pulse-jet Fixing Frame using (2) pcs of 1/2"*1-1/4" Hex Screw, (4) pcs of 1/2"*OD25*2t Flat Washer, (2) pcs of 1/2" Spring Washer and (2) pcs of 1/2" Hex Nut to the Upper raw of Machine Body.

REMARK: Fasten the screws from inside to outside of the Machine Body.

E. 【Machine Body】 Air Pulse-Jet Assembly:

OSKAR Dust Collector



- 【1】** Disassemble the Box and tear the Bubble Wrapper of the Air Pulse Jet.
Take out the Air Pulse-Jet, Water Filtering Device, Water Releasing Valve and Black Gasket Ring.



There is a hole below for use of Releasing the Water Valve.

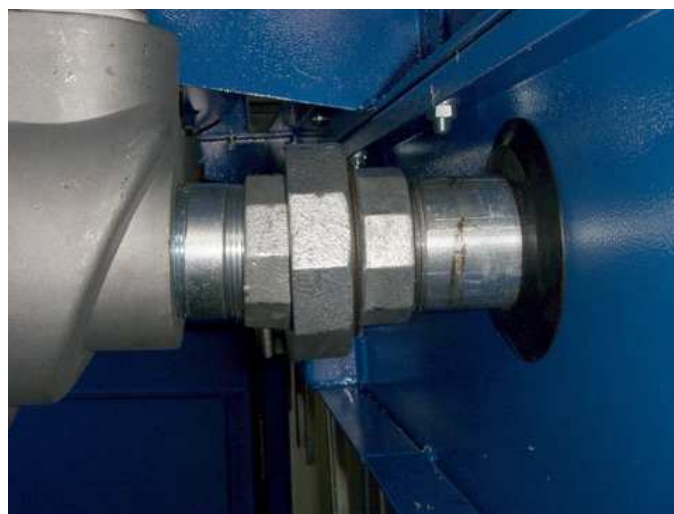
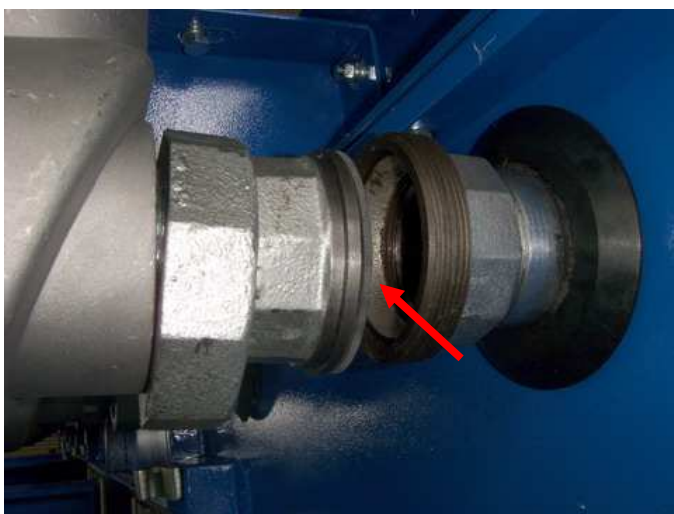
There is a hole for the Water Filtering Device.

- 【2】** Fix the Air Pulse-Jet on the Pulse-Jet Fixing Drum.
Pay attention to the direction of the Air Pulse-Jet.

OSKAR Dust Collector



【3】 Note that the direction of the Magnetic Valve for the Air Pulse Jet points towards inside.



【3】 Put the black gasket on the 2" Connector on the Magnetic Valve.

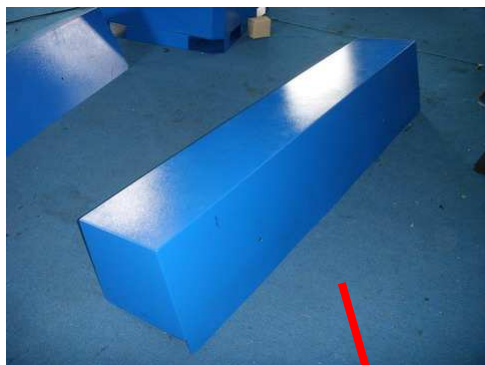
【4】 Then fasten the screws of the 2" Connector and the 2" Steel Pipe.

OSKAR Dust Collector



【5】 Fix the Water Releasing Valve on the Air Pulse-Jet with 1” Steel Pipe.

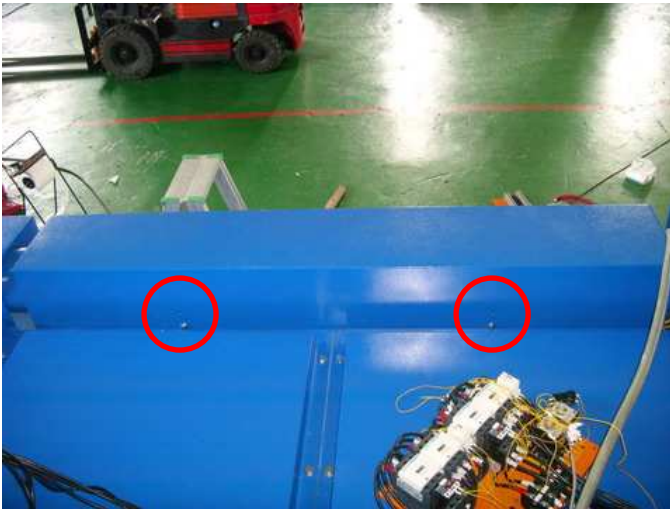
F. 【Machine Body】 Air Pulse-Jet Cover:



【1】 There are three types of Air Pulse-Jet Cover:
Refer to the figures above: Left Cover is sealed *without* holes on the surface.

OSKAR Dust Collector

Middle Cover is labeled with OSKAR LOGO.
Right Cover is sealed *with* holes on the surface.



【2】 Each Air Pulse-Jet Cover back side will be fixed with (2) pcs of 3/8”*3/4” Hex Screw and (2) pcs of 3/8”*OD23*2t Flat Washer to the Air Pulse-Jet Fixing Base. (Fig. 5)



【3】 Each Air Pulse-Jet Cover front side will be fixed with (2) pcs of 3/8”*3/4” Hex Screw and (2) pcs of 3/8”*OD23*2t Flat Washer to the Air Pulse-Jet Fixing Base. (Fig. 6).

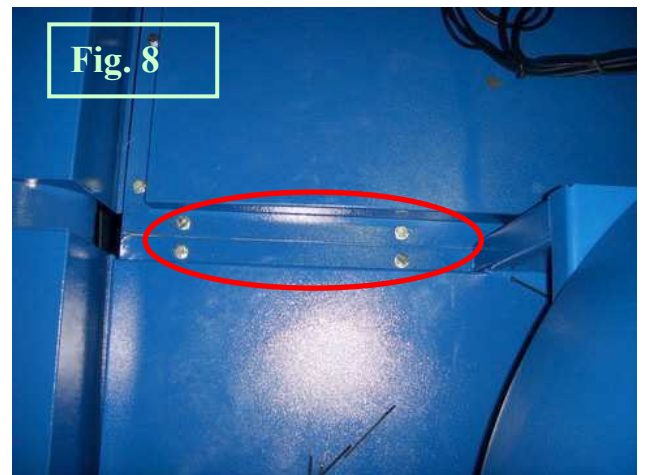
OSKAR Dust Collector



【4】 Use 1” Connector to put through the Water Filtering Device to the Air Pulse-jet Cover and fasten it at the hole on the right side.

OSKAR Dust Collector

G. 【Machine Body】 Blower Section:



【5】 [Fig. 7] Assembly positions for the (2) Blower Sections.

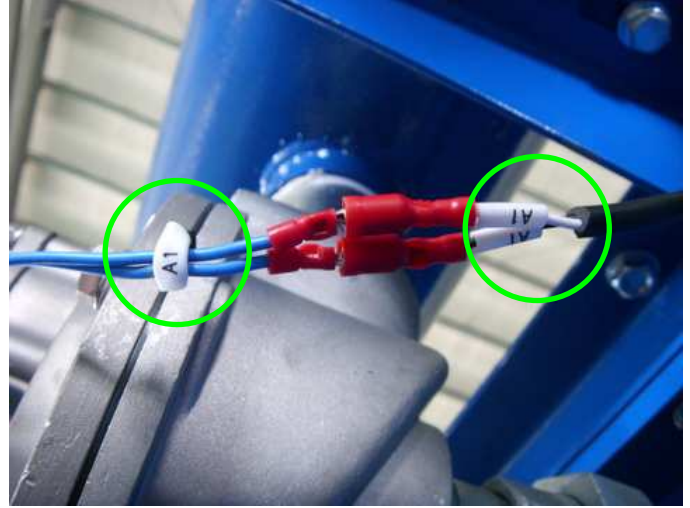
【6】 [Fig. 8] Use (24) pcs of 1/2"×3/4" Hex Screw and (24) pcs of 1/2"×OD25×2t Flat Washers to fix the Blower Section to the Machine Body.

Please read and save these instructions. Read carefully before attempting to assemble, install, operate or maintain the product described. Protect yourself and others by observing all safety information. Failure to comply with instructions could result in personal injury and/or property damage! Retain instructions for future reference.



OSKAR Dust Collector

H. 【Machine Body】 Magnetic Valve Wiring:



- 【1】 Plug in the Power Cords according to the Cord Numbers marked on the Magnetic Valve (from left to right) A1~A12.

I. 【Machine Body】 Motor Wiring:



OSKAR Dust Collector



【1】 Connect the Power Cords from the (2) Blower Sections to the Control Box on the Right Side of the Machine Body. [Fig. 9]



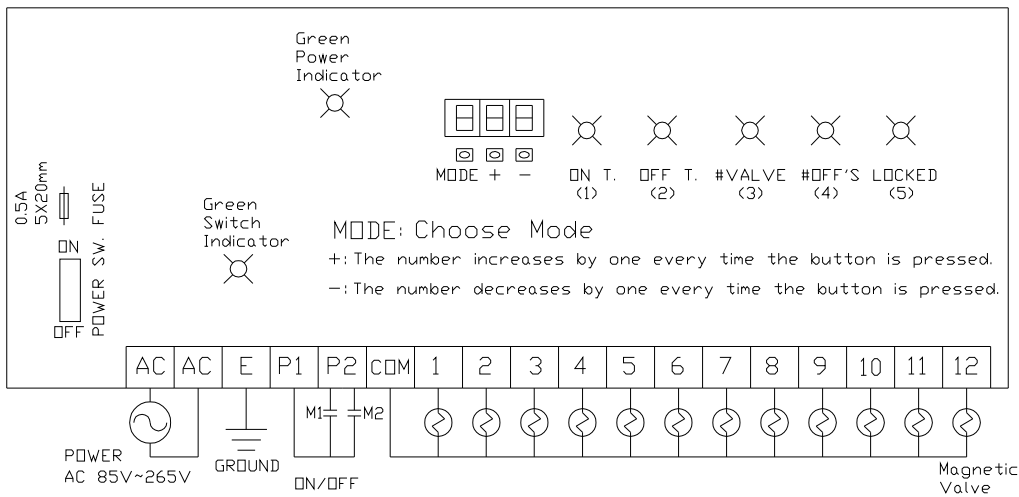
【2】 Open the Control Box, connect the (2) power cords through the (2) holes under the Box.

【3】 Use a Screwdriver to fix the Power Cords to the receptacles.

OSKAR Dust Collector

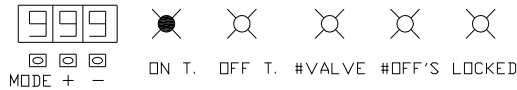
Appendix

SDC-28500 Magnetic Valve Operating Illustration



STEP(1): Set Pulse-Jet Cleaning time ▶

Press "MODE" and select "ON T. (1)" Light on, Then press "+" or "-" to adjust the ON time, ranging from 1~50 mins



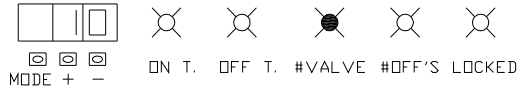
STEP(2): Set Interval time ▶

Press "MODE" and select "OFF T. (2)" Light on, Then press "+" or "-" to adjust the OFF time, ranging from 1~999 mins



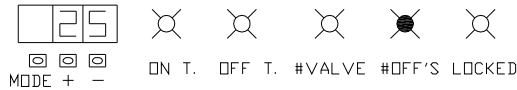
STEP(3): Set Quantity of Magnetic Valve ▶

Press "MODE" and select "#VALVE (3)" Light on, Then press "+" or "-" to set the required quantity of magnetic valve, ranging from 1~20 mins



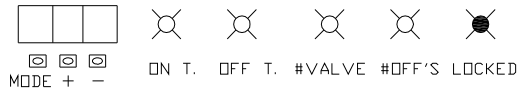
STEP(4): Set number of cycles after switching off ▶

Press "MODE" and select "#OFF'S (4)" Light on, Then press "+" or "-" to adjust the number of cycles, ranging from 0~25



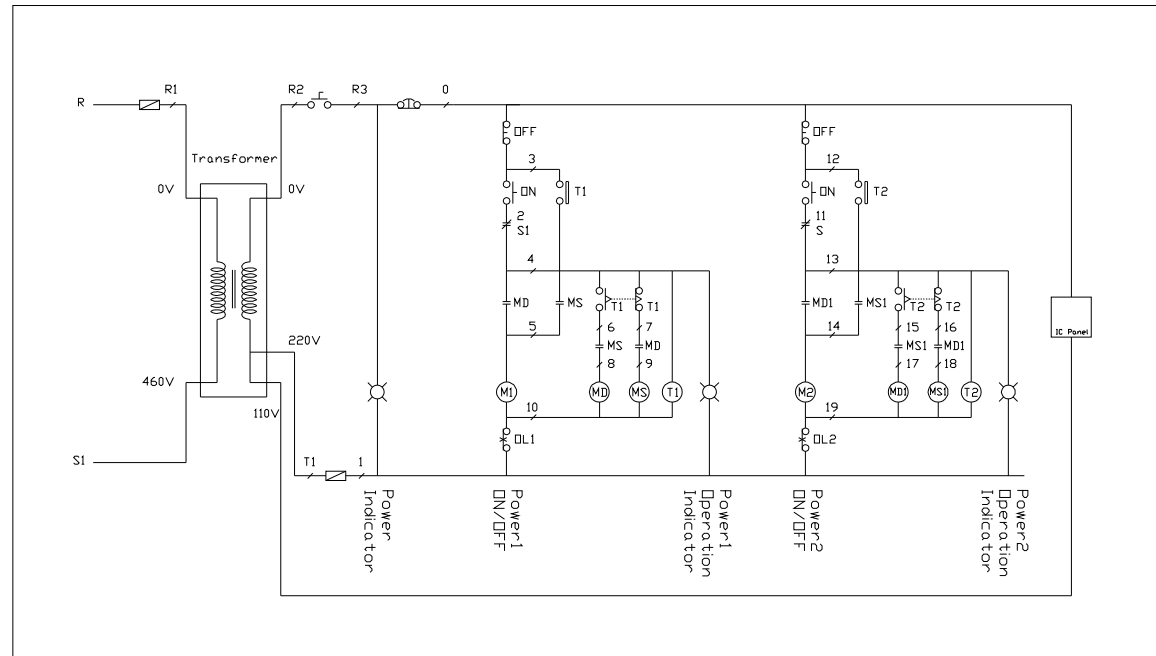
STEP(5): Setting completed ▶

Press "MODE" and select "LOCKED (5)" Light on, Setting is completed, pressing "+" or "-" button will not change the setting.



OSKAR Dust Collector

SDC-28500 Schematics



Please read and save these instructions. Read carefully before attempting to assemble, install, operate or maintain the product described. Protect yourself and others by observing all safety information. Failure to comply with instructions could result in personal injury and/or property damage! Retain instructions for future reference.

