

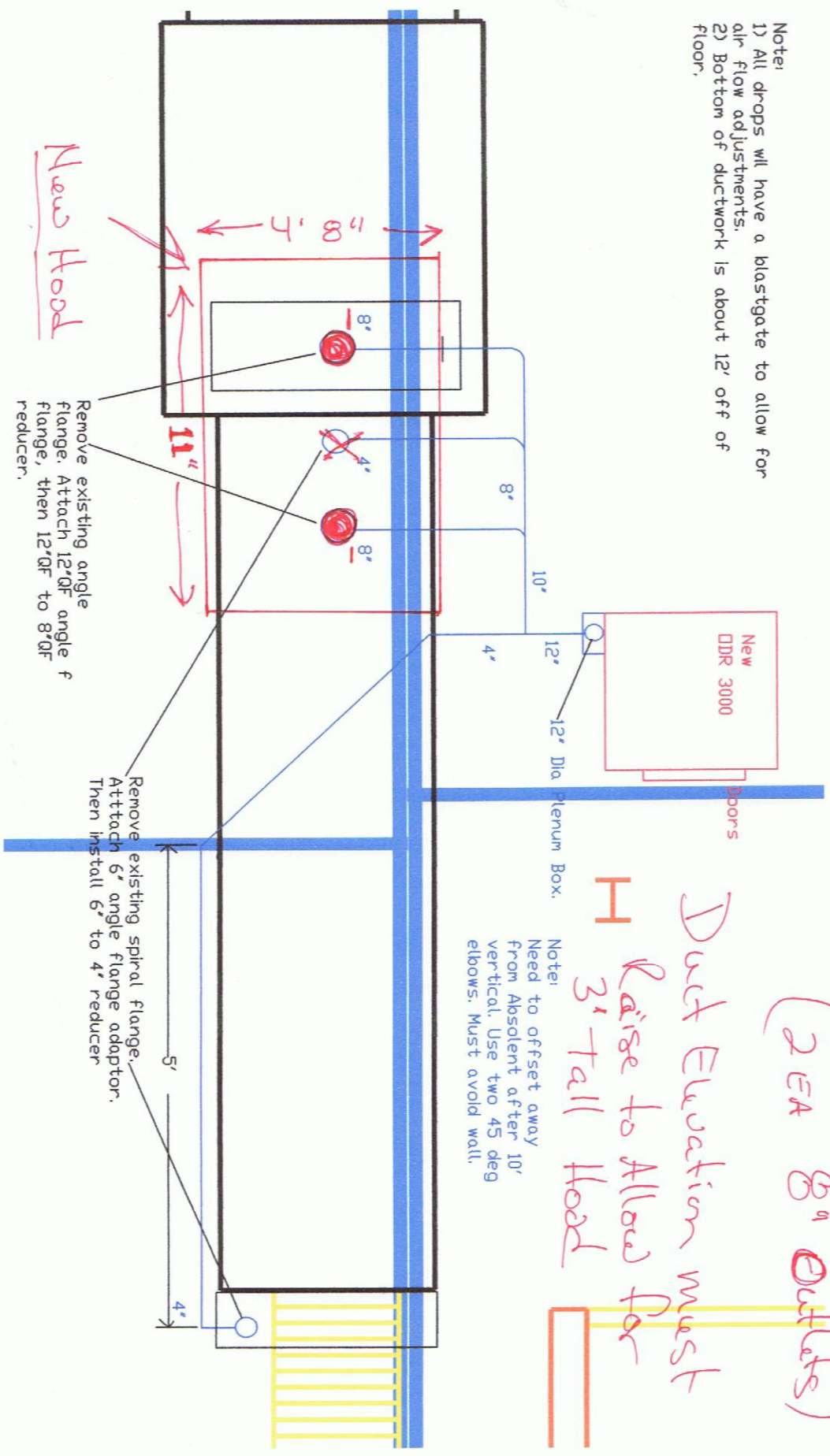
Hood Size 4'8" W x 11' Long x 3' Tall

(2 EA 8" outlets)

Dust Evacuation must

H Raise to Allow for 3' tall Hood

Note:  
 1) All drops will have a blastgate to allow for air flow adjustments.  
 2) Bottom of ductwork is about 12' off of floor.



Note:  
 Need to offset away from Absolent after 10' vertical. Use two 45 deg elbows. Must avoid wall.

Remove existing spiral flange. Attach 5" angle flange adaptor. Then install 6" to 4" reducer.

Remove existing angle flange. Attach 12" QF angle flange, then 12" QF to 8" QF reducer.