



Date: March 17, 2014

Project:

To: Alcoa, San Antonio Works

Attn:

Recommended Equipment:

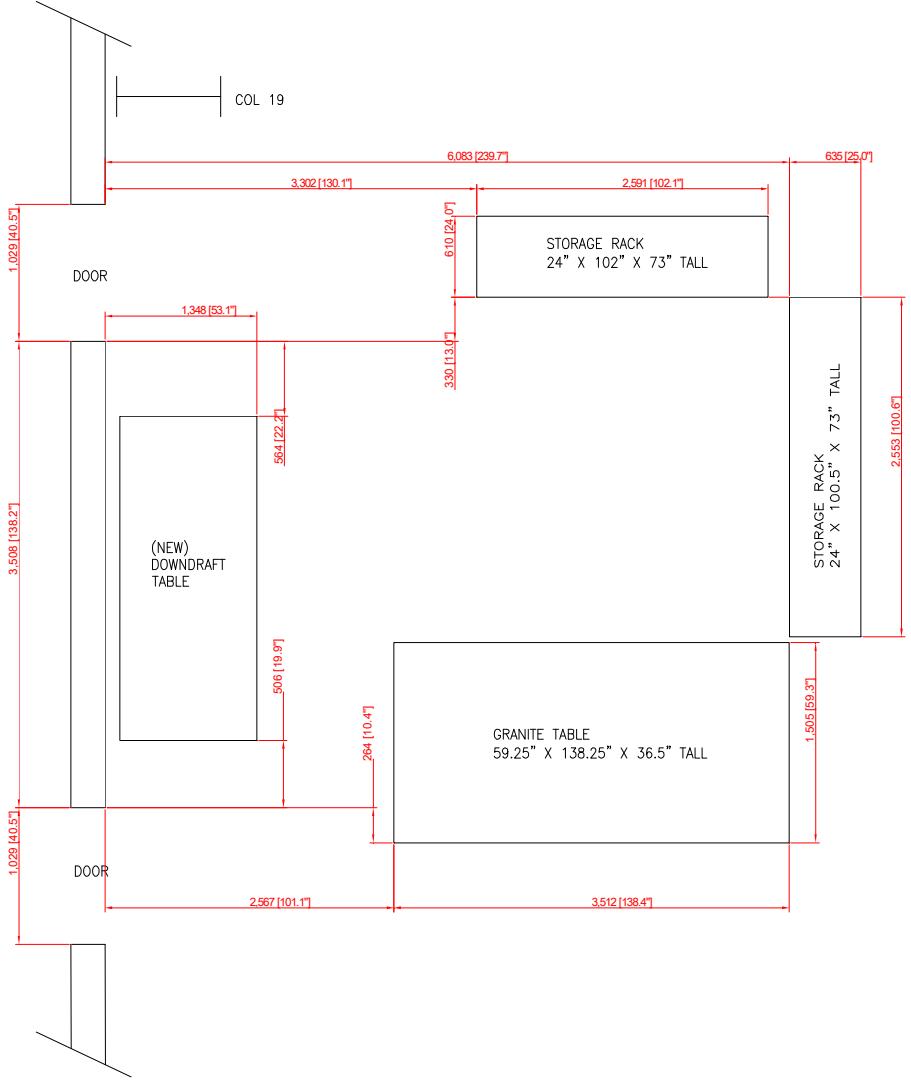
Recommended changes to relocate downdraft table

Avani Environmental Intl. Inc.
95 Cypress Drive
Youngsville, NC 27596
www.avanienvironmental.com

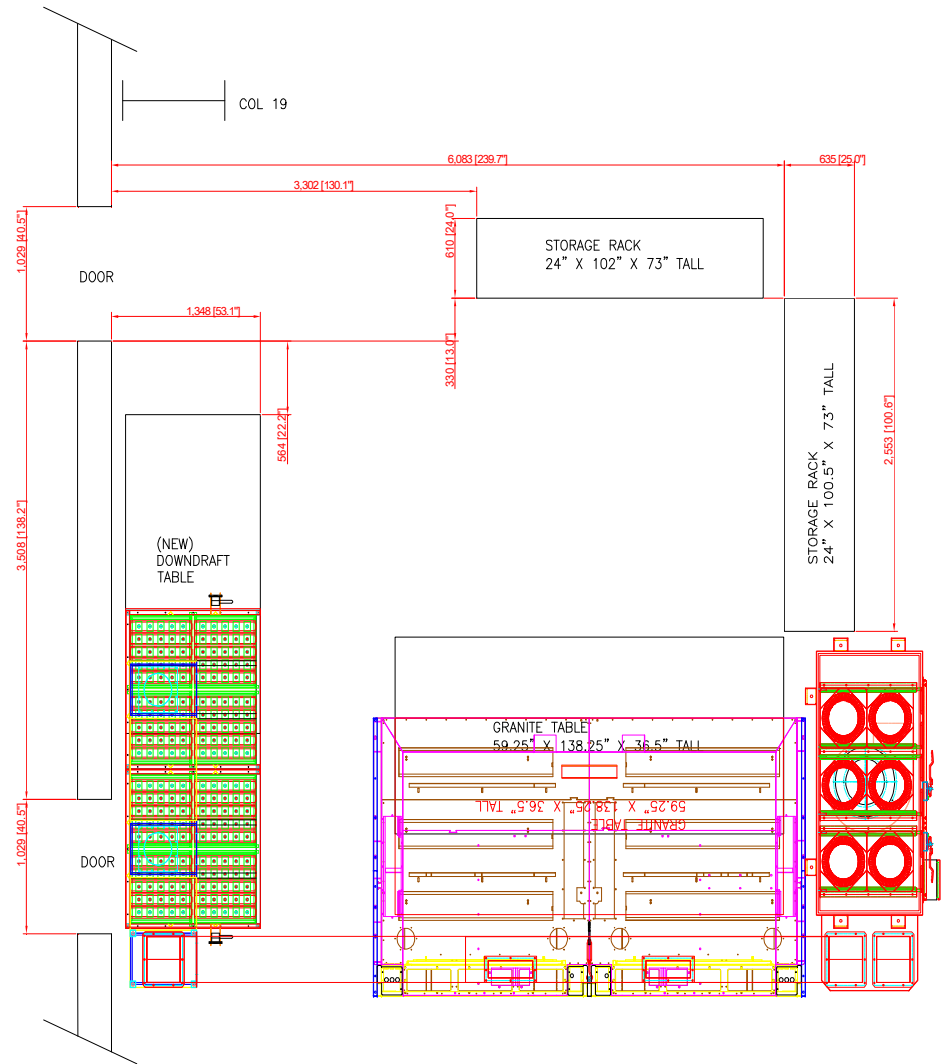
Phone: (919) 570-2862
Fax: (919) 570-2863
Email: info@avanienvironmental.com
www.weldingbooths.com

The drawings, AutoCAD, 3-D Models, and specifications are the property of Avani Environmental Intl. Inc. (AE) and may not be reproduced, distributed, modified, or otherwise used, except provided herein, without the express written permission of AE.

Layout Drawing recieved from Alcoa

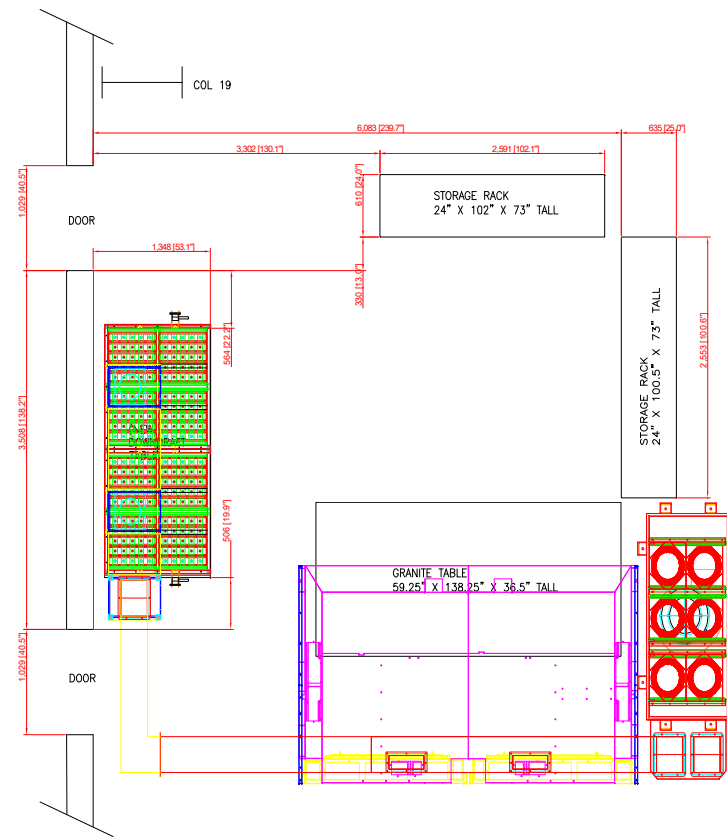


Layout Drawing with units already shipped

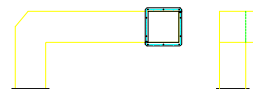


*Downdraft table is blocking the door

Recommended change in layout drawing to accomodate Alcoa



*Add ductwork to relocate downdraft table away from door



*Additional ductwork

Add ductwork to move the downdraft table
away from obstructing the door





Add ductwork to move the downdraft table away from obstructing the door