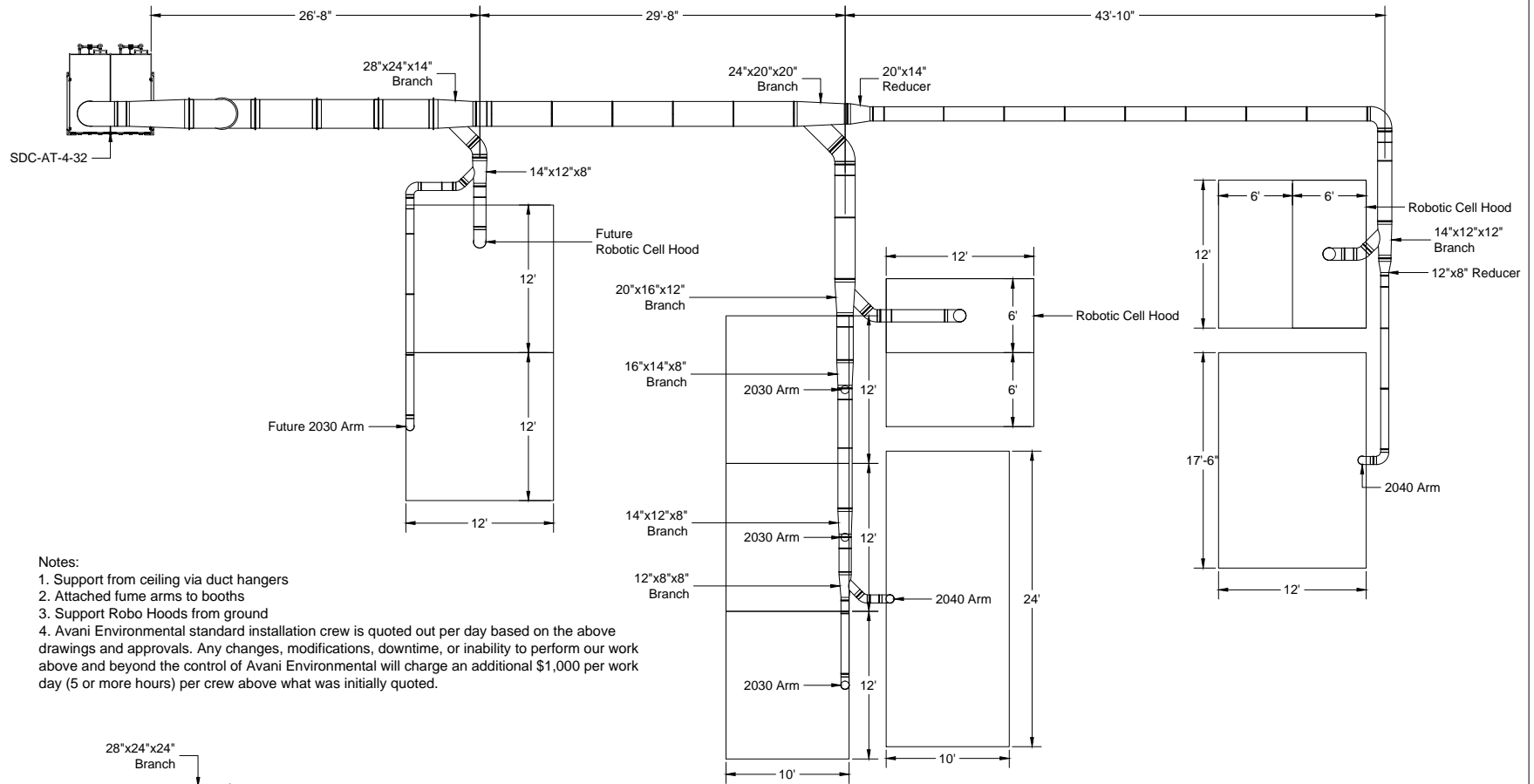
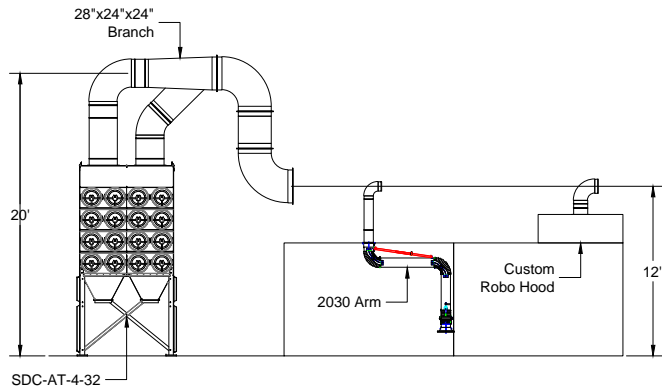


Torcsill/AirGas SO22056 Duct Layout



Notes:

1. Support from ceiling via duct hangers
2. Attached fume arms to booths
3. Support Robo Hoods from ground
4. Avani Environmental standard installation crew is quoted out per day based on the above drawings and approvals. Any changes, modifications, downtime, or inability to perform our work above and beyond the control of Avani Environmental will charge an additional \$1,000 per work day (5 or more hours) per crew above what was initially quoted.



Elevation View

Plan View

Avani Environmental Intl. Inc.
95 Cypress Drive
Youngsville, NC 27596
P# 919-570-2862 F# 919-570-2863

Avani

Project: Torcsill/AirGas SO22056

Drawing: Duct Layout

Date: 10/27/14

Drawn by: MDT

Sheet No:

Rev 0